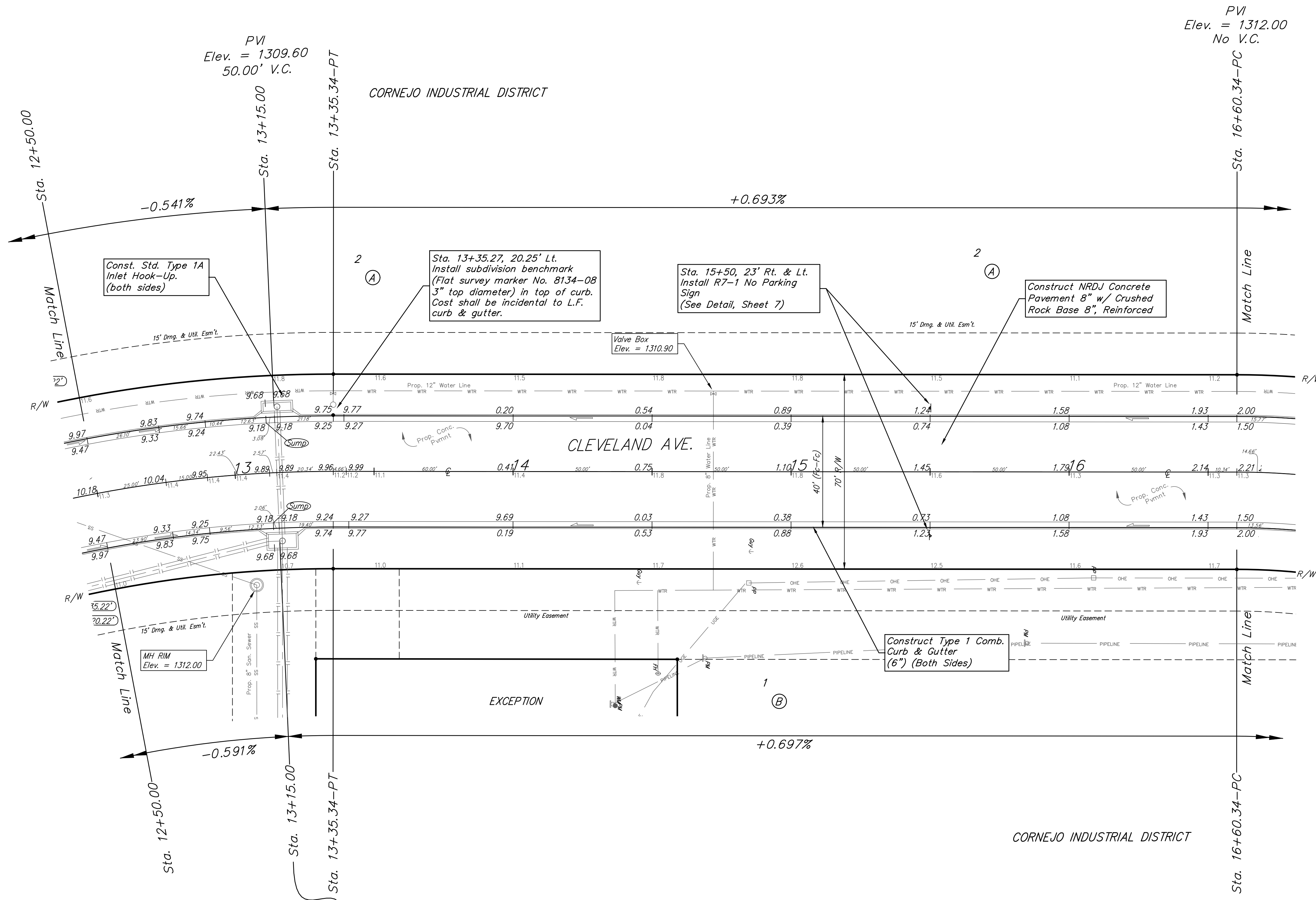


BENCHMARKS:
 Square Cut On Top of South Curb
 of 21st St. N.
 33'± West and 32'± South of the
 Intersection of 21st St. N. and
 Cleveland Ave.
 Elev. = 1307.56(NAVD88)

Square Cut On Top of South
 Concrete Pad of Monitoring Well
 26'± East and 51'± South of The
 Intersection of 21st St. N. and
 Cleveland Ave.
 Elev. = 1308.70(NAVD88)

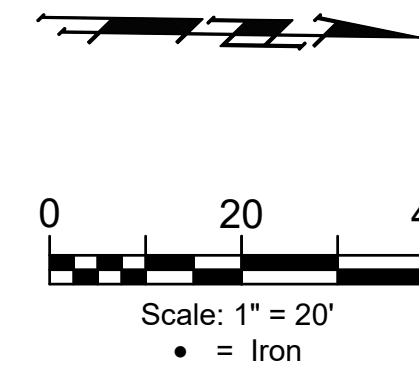


PVI
 Elev. = 1312.00
 No V.C.

PVI
 Elev. = 1309.60
 50.00' V.C.

PVI
 Elev. = 1309.60
 50.00' V.C.

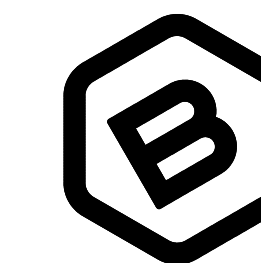
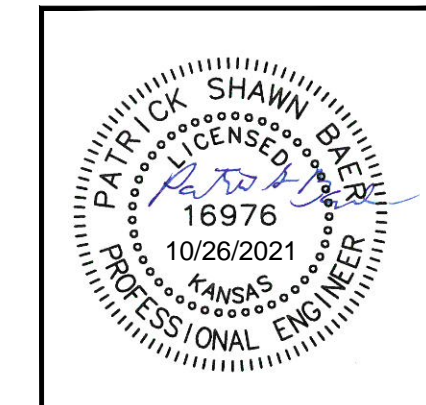
PVI
 Elev. = 1312.00
 No V.C.



Benchmarks

Street & Station	Location Description	Elevation
Cleveland Ave. 3+43.00, 20.25' Lt.	Adjacent to Fire Hydrant Near the Northeast Corner of Lot 1, Blk A	
Cleveland Ave. 7+93.46, 20.25' Lt.	Adjacent to Fire Hydrant West of the Intersection of Cleveland & New York, Near Lot 2, Blk A	
Cleveland Ave. 13+35.27, 20.25' Lt.	Adjacent to Fire Hydrant on the West side of Cleveland Near Lot 8, Blk 1 of North Industrial Park 4th Add.	
Cleveland Ave. 19+39.35, 20.25' Lt.	Adjacent to Fire Hydrant Near the Northwest Corner of Lot 1, Blk B	
Cleveland Ave. 25+83.53, 20.25' Lt.	Adjacent to Fire Hydrant 200' West of the Intersection of Cleveland & New York, Near the NE Corner of Lot 2, Blk A	
Cleveland Ave. 29+41.29, 17.55' Lt.	Adjacent to Fire Hydrant 200' Southeast of the Northeast Corner of Lot 2, Blk A	

Type 1 curb & gutter to
 be constructed on the pavement
 on this sheet.
 Top of curb elevation are given
 for Type 1 curb.



**BAUGHMAN
 COMPANY**

315 Ellis St.
 Wichita, KS 67211
 316-262-7271
 BaughmanCo.com

CORNEJO INDUSTRIAL
 DISTRICT

CLEVELAND

Sta. 12+50.00 to 16+60.34
 Street Paving Improvements

PROJECT NUMBER:
 472-2021-085726

DESIGN: PSB DRAWN: HJW

DATE: Oct. 26, 2021

SHEET OF
11 62