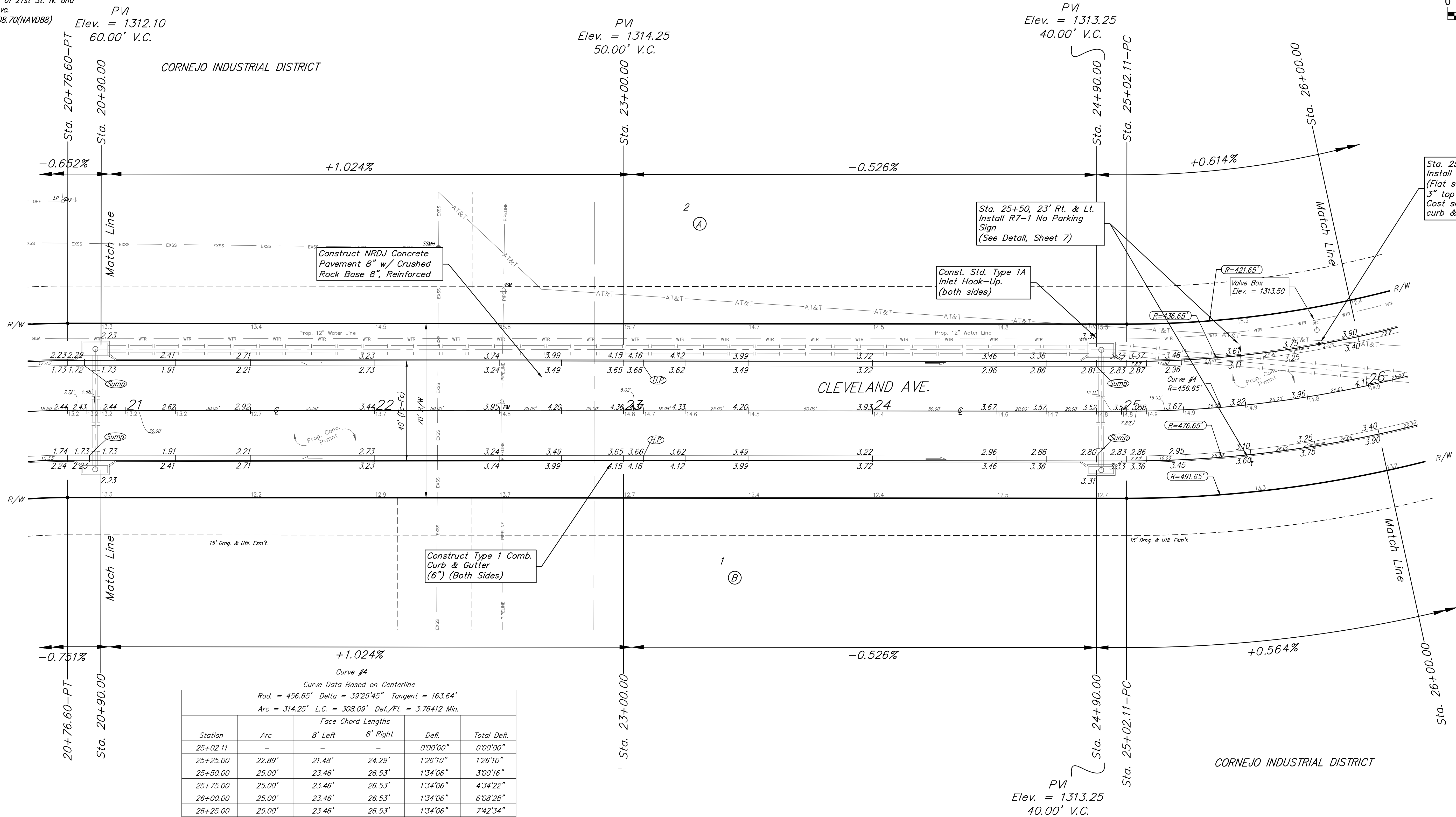
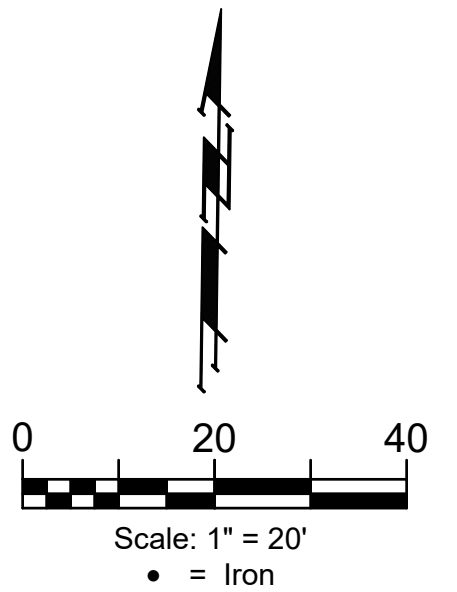


BENCHMARKS:
 Square Cut On Top of South Curb
 of 21st St. N.
 334'± West and 32'± South of the
 Intersection of 21st St. N. and
 Cleveland Ave.
 Elev. = 1307.56(NAVD88)

Square Cut On Top of South
 Concrete Pad of Monitoring Well
 26'± East and 51'± South of The
 Intersection of 21st St. N. and
 Cleveland Ave.
 Elev. = 1308.70(NAVD88)



Sta. 25+50, 23' Rt. & Lt.
 Install R7-1 No Parking
 Sign
 (See Detail, Sheet 7)

Const. Std. Type 1A
 Inlet Hook-Up.
 (both sides)

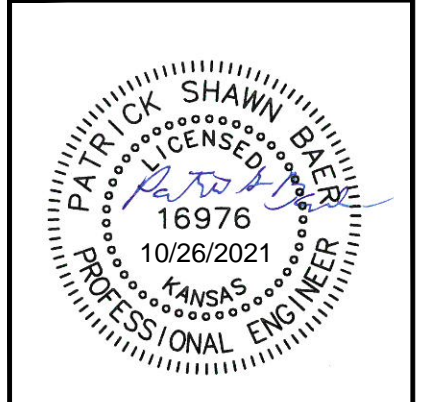
Sta. 25+83.53, 20.25' Lt.
 Install subdivision benchmark
 (Flat survey marker No. 8134-08
 3" top diameter) in top of curb.
 Cost shall be incidental to L.F.
 curb & gutter.

Construct Type 1 Comb.
 Curb & Gutter
 (6") (Both Sides)

Curve #4
 Curve Data Based on Centerline
 Rad. = 456.65' Delta = 39°25'45" Tangent = 163.64'
 Arc = 314.25' L.C. = 308.09' Def./Ft. = 3.76412 Min.

Face Chord Lengths				
Station	Arc	8' Left	8' Right	Total Defl.
25+02.11	-	-	-	0'00"00"
25+25.00	22.89'	21.48'	24.29'	1'26"10"
25+50.00	25.00'	23.46'	26.53'	3'00"16"
25+75.00	25.00'	23.46'	26.53'	4'34"22"
26+00.00	25.00'	23.46'	26.53'	6'08"28"
26+25.00	25.00'	23.46'	26.53'	7'42"34"
26+50.00	25.00'	23.46'	26.53'	9'16"41"
26+75.00	25.00'	23.46'	26.53'	10'50"47"
27+00.00	25.00'	23.46'	26.53'	12'24"53"
27+25.00	25.00'	23.46'	26.53'	13'58"59"
27+50.00	25.00'	23.46'	26.53'	15'33"05"
27+75.00	25.00'	23.46'	26.53'	17'07"11"
28+00.00	25.00'	23.46'	26.53'	18'41"18"
28+16.36	16.36'	15.36'	17.36'	19'42"53"

Type 1 curb & gutter to
 be constructed on the pavement
 on this sheet.
 Top of curb elevation are given
 for Type 1 curb.



BAUGHMAN COMPANY
 315 Ellis St.
 Wichita, KS 67211
 316-262-7271
 BaughmanCo.com

CORNEJO INDUSTRIAL DISTRICT
CLEVELAND

Sta. 20+90.00 to 26+00.00
 Street Paving Improvements
 PROJECT NUMBER:
 472-2021-085726
 DESIGN: PSB DRAWN: HJW
 DATE: Oct. 26, 2021
 SHEET OF
13 62

File: E:\Projects\Cornejo Industrial District_20-11-P603\Engineering\Phase 1 (only if Multiple Phases)\STR Plans\STR.dwg