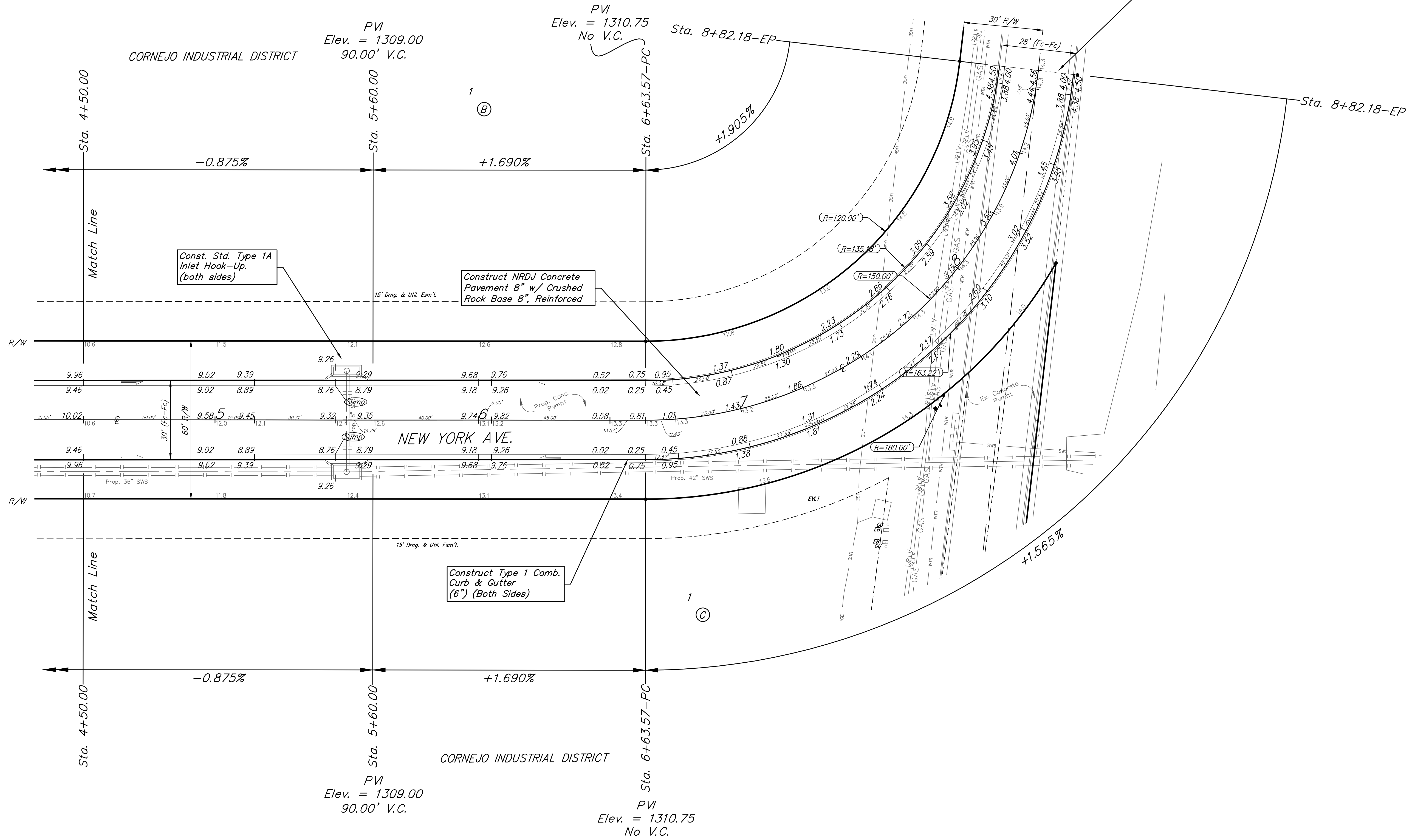
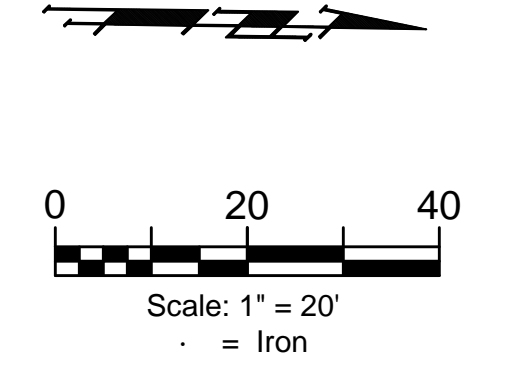


**BENCHMARKS:**  
 Square Cut On Top of South Curb of 21st St. N.  
 33'± West and 32'± South of the Intersection of 21st St. N. and Cleveland Ave.  
 Elev. = 1307.56(NAVD88)

Square Cut On Top of South Concrete Pad of Monitoring Well 26'± East and 51'± South of The Intersection of 21st St. N. and Cleveland Ave.  
 Elev. = 1308.70(NAVD88)



Sta. 8+82.18 End Construction of NRDJ Concrete Pavement 8" w/ Crushed Rock Base 8", Reinforced

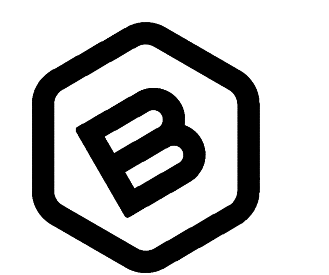
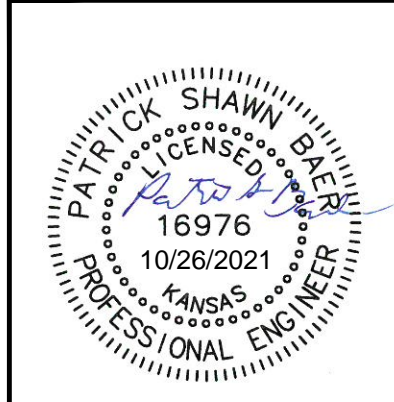
Const. Std. Type 1A Inlet Hook-Up (both sides)

Construct NRDJ Concrete Pavement 8" w/ Crushed Rock Base 8", Reinforced

Construct Type 1 Comb. Curb & Gutter (6") (Both Sides)

Transition from 30' Fc-Fc to 28' Fc-Fc from Sta. 6+63.57 to Sta. 8+82.18.

Type 1 curb & gutter to be constructed on the pavement on this sheet. Top of curb elevation are given for Type 1 curb.



**BAUGHMAN COMPANY**  
 315 Ellis St.  
 Wichita, KS 67211  
 316-262-7271  
 BaughmanCo.com

CORNEJO INDUSTRIAL DISTRICT  
 NEW YORK

Sta. 4+50.00 to 8+82.18  
 Street Paving Improvements

PROJECT NUMBER:  
 472-2021-085726

DESIGN: PSB DRAWN: HJW  
 DATE: Oct. 26, 2021

SHEET OF  
 16 62

File: E:\Projects\Comerjo Industrial District\_20-11-P603\Engineering\Phase 1 (only if Multiple Phases)\STR Plans\STR.dwg