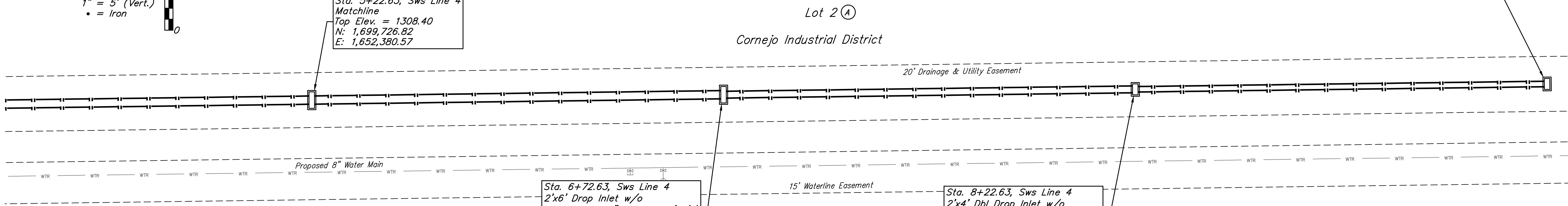


Sta. 5+22.63, Sws Line 4
Matchline
Top Elev. = 1308.40
N: 1,699,726.82
E: 1,652,380.57

Sta. 9+72.63, Sws Line 4
2'x4' Dbl. Drop Inlet w/o apron,
2-12" Knockouts (N/S) & 15" Knockout (E)
Top Elev. = 1308.61
N: 1,699,732.69
E: 1,652,830.53

Sta. 6+72.63, Sws Line 4
2'x6" Drop Inlet w/o
apron & 2-12" Knockout (N/S)
Top Elev. = 1308.40
N: 1,699,728.78
E: 1,652,530.56

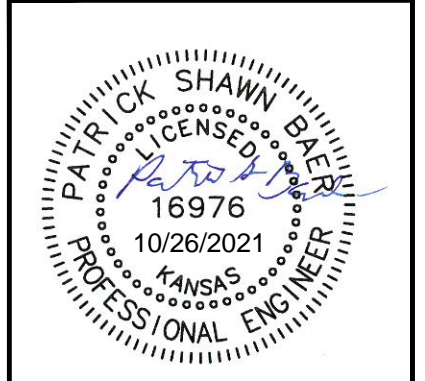
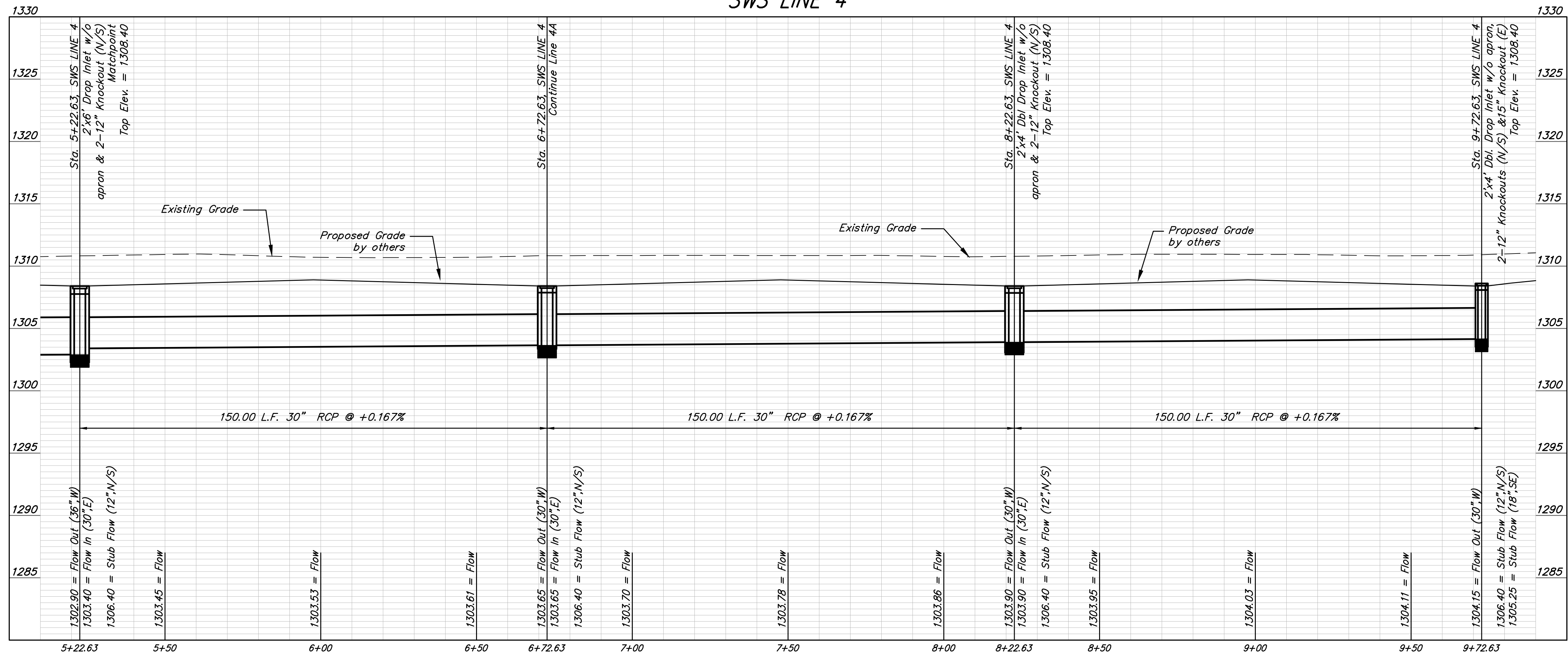
Sta. 8+22.63, Sws Line 4
2'x4' Dbl Drop Inlet w/o
apron & 2-12" Knockout (N/S)
Top Elev. = 1308.40
N: 1,699,730.73
E: 1,652,680.55



BENCHMARKS

- BM- #1: Square cut on top of South curb of 21st St. N. 334'± West and 32'± South of the intersection of 21st St. N. and Cleveland Ave. Elev. = 1307.56(NAVD88)
- BM- #2: Square cut on top of South concrete pad of monitoring well 26'± East and 51'± South of the intersection of 21st St. N. and Cleveland Ave. Elev. = 1308.70(NAVD88)
- BM- #3: C.O.W BM Disc on top of South concrete wall 918'± West and 147'± North of the intersection of 21st St. N. and Cleveland Ave. Elev. = 1312.58(NAVD88)

SWS LINE 4



BAUGHMAN COMPANY
 315 Ellis St.
 Wichita, KS 67211
 316-262-7271
 BaughmanCo.com

CORNEJO INDUSTRIAL DISTRICT
 SWS LINE 4
 Sta. 5+27.02 to Sta. 9+77.02

STREET IMPROVEMENTS
 Pavement Improvements
 PROJECT NUMBER:
 472-2021-085726
 DESIGN: PSB DRAWN: TNJ
 DATE: Oct. 26, 2021
 SHEET 29 OF 62

File: E:\Projects\Cornejo Industrial District_20-11-P603\Engineering\Phase 1 (only if Multiple Phases)\SWS_21-06-E936\CID SWS Pave.dwg