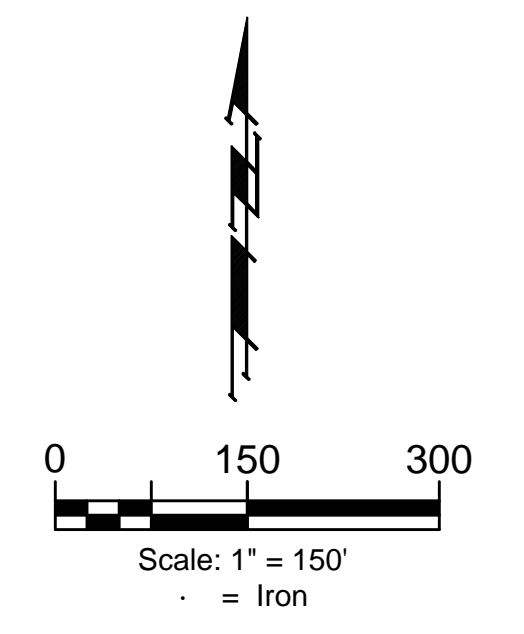
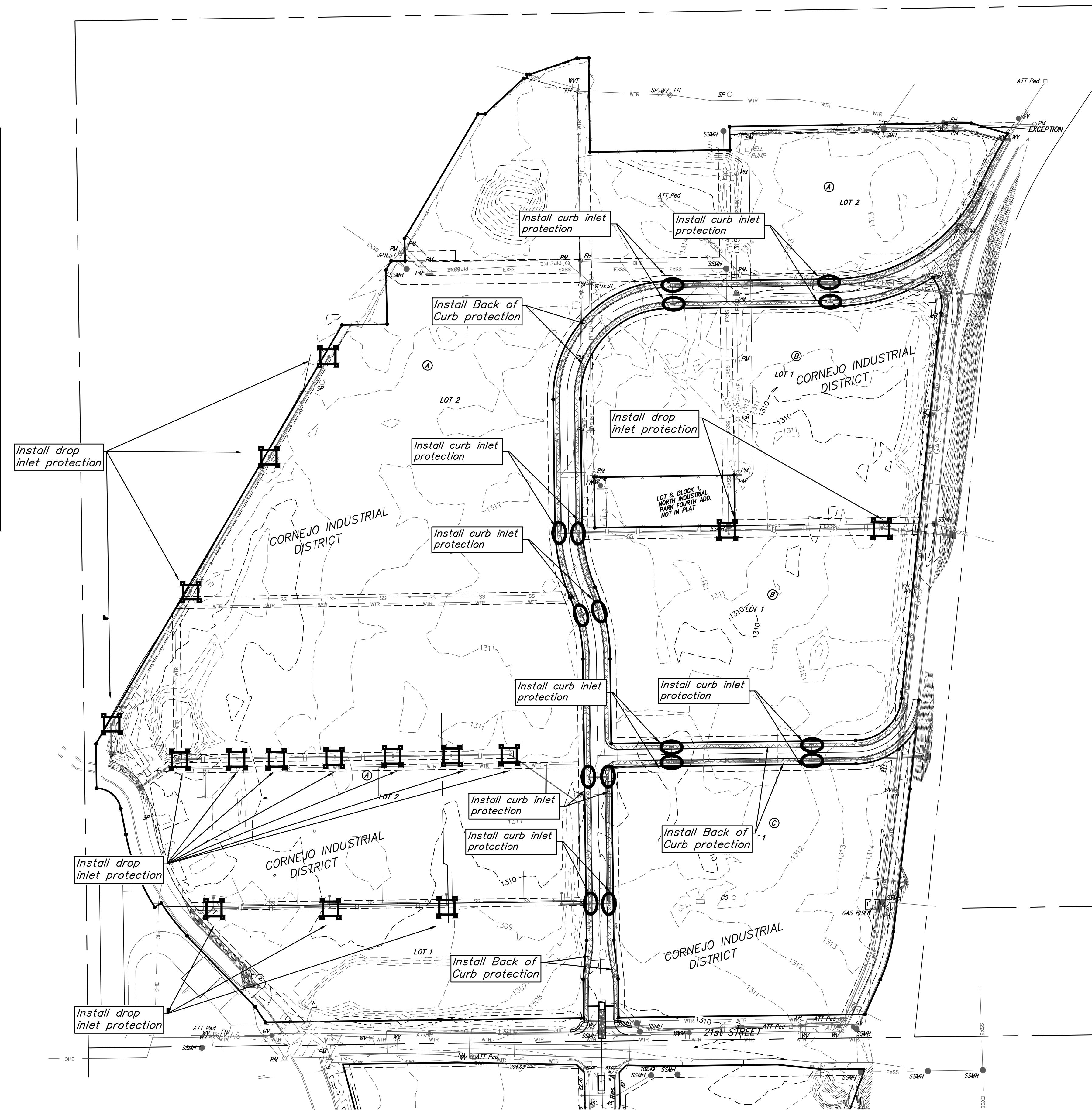


**BENCHMARKS:**  
 Square Cut On Top of South Curb  
 of 21st St. N.  
 334'± West and 32'± South of the  
 Intersection of 21st St. N. and  
 Cleveland Ave.  
 Elev. = 1307.56(NAVD88)




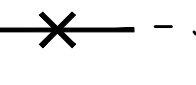


Square Cut On Top of South  
 Concrete Pad of Monitoring Well  
 26'± East and 51'± South of The  
 Intersection of 21st St. N. and  
 Cleveland Ave.  
 Elev. = 1308.70(NAVD88)

**Earthwork General Notes:**

1. Excess material shall remain on-site and be stockpiled in the northeast corner of Lot 2, Block A for remediation. Earthwork quantities are unadjusted and are for reference only. All cost associated with mass grading shall be incidental to lump sum bid item "Grading, Mass".
2. Contractor to strip top 4-6" of soil within street right-of-way before mass grading. Excess soil is to be stockpiled in Lot 2, Block A near Sta. 15+00 of Cleveland.
3. Compaction of 95% Standard Proctor Density shall be obtained in all areas. Fill shall be placed within 0% to 4% of optimum moisture content of the soil at the time of placement. All testing shall be incidental to Lump Sum bid item "Testing". Contractor shall plan on 15 compaction tests at 3 different mobilizations.
4. It shall be the Contractor's responsibility to protect existing utilities during mass grading. Any damage done to these systems by Contractor or subcontractor shall be repaired at no additional cost to the project.
5. Abandoned refinery utilities (such as steel pipe, PVC pipe, conduits, etc.) in direct conflict with mass grading and utility installation shall be removed to the extents of installation and capped following City Standard Specifications and Special Provisions. See Cover Sheet Notes and Demo Plan sheets for details.
6. If abandoned concrete is in direct conflict with mass grading and utility installation, the Contractor shall notify the Developer. See Cover Sheet Notes and Demo Plan sheets for details.
7. All areas disturbed during construction shall be seeded, mulched, and fertilized as per Cover Sheet General Notes.



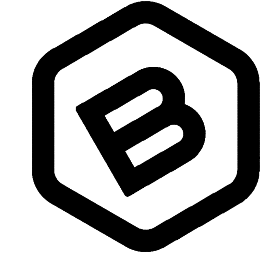
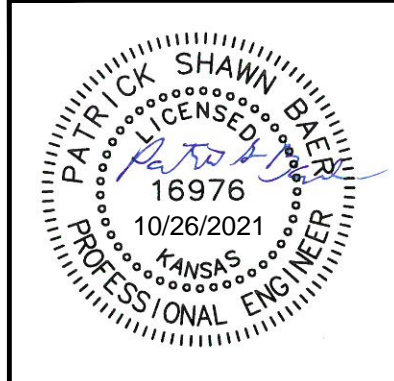
**EROSION CONTROL PLAN LEGEND**

-  - DROP INLET PROTECTION
-  - CURB INLET PROTECTION
-  - DITCH CHECKS
-  - SILT FENCING
-  - EROSION CONTROL BERM
-  - BACK OF CURB PROTECTION

EROSION CONTROL MEASURE	INSTALL	MAINTAIN	REMOVE
CONSTRUCTION ENTRANCE (EA)	0	1	0
BACK OF CURB PROTECTION (LF)	7,843	0	0
SILT FENCE (LF)	0	0	0
DITCH CHECKS (EA)	0	0	0
CURB INLET PROTECTION (EA)	16	0	0
DROP INLET PROTECTION (EA)	16	0	0
EROSION CONTROL MAT (SY)	0	0	0
MULCH WATTLE SED. BARRIER (LF)	0	0	0
EROSION CONTROL BERM (LF)	0	0	0

\* ALL EXISTING BMPs INCLUDING CONSTRUCTION ENTRANCE, SEDIMENT BARRIERS, SILT FENCE, CUT-OFF TRENCH, AND EROSION CONTROL MAT SHALL BE MAINTAINED AND REPAIRED IF NECESSARY.

Contractor shall make sure all erosion control is in place before project is accepted. This plan represents the minimum standard. Any additional erosion control measures shall be installed by the Contractor as needed.



**BAUGHMAN COMPANY**

315 Ellis St.  
 Wichita, KS 67211  
 316-262-7271  
 BaughmanCo.com

CORNEJO INDUSTRIAL DISTRICT

**EROSION CONTROL**

Street Paving Improvements

PROJECT NUMBER:  
 472-2021-085726

DESIGN: PSB DRAWN: HJW

DATE: Oct. 26, 2021

SHEET OF  
 35 62

File: E:\Projects\Cornejo Industrial District\_20-11-P603\Engineering\Phase 1 (only if Multiple Phases)\STR Plans\STR.dwg