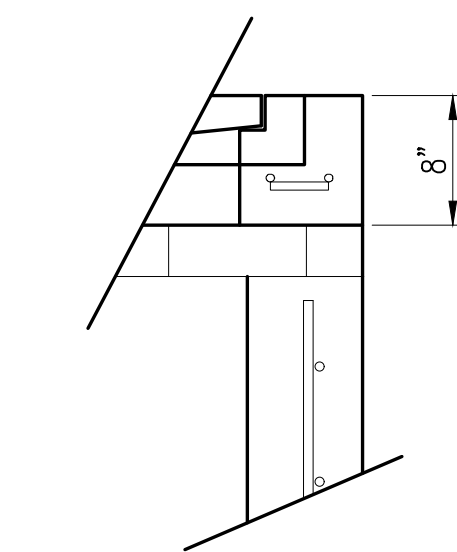
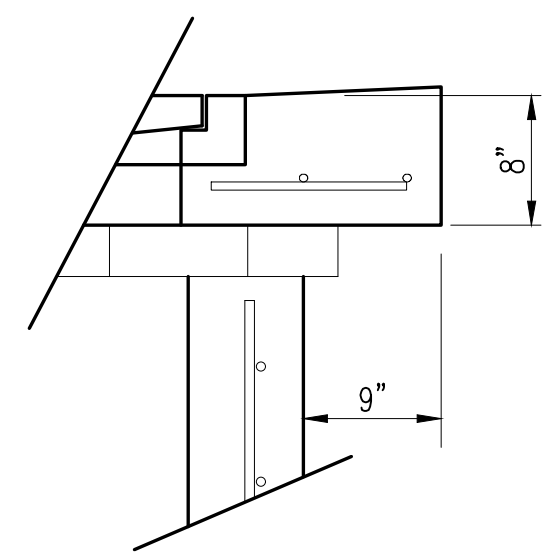


TOP VIEW

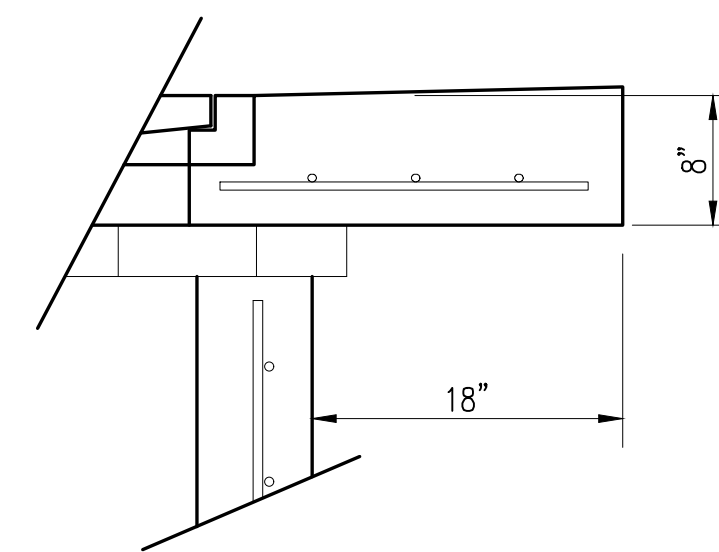


FLUSH STYLE TOP
NO APRON



9" APRON

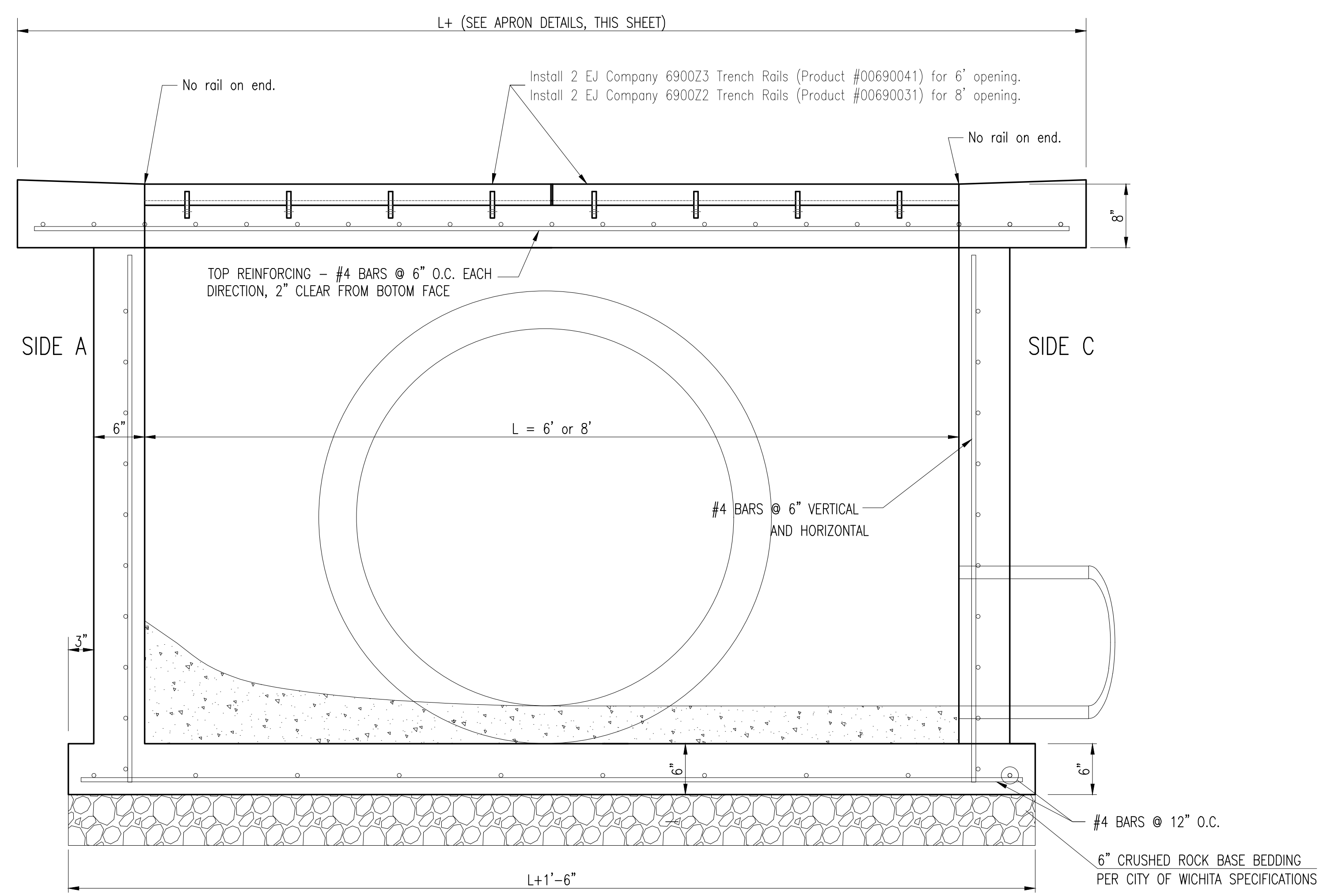
* APRON TO EXTEND ON ALL 4 SIDES OF INLET.
DESIGNER TO DESIGNATE APRON SIZE.



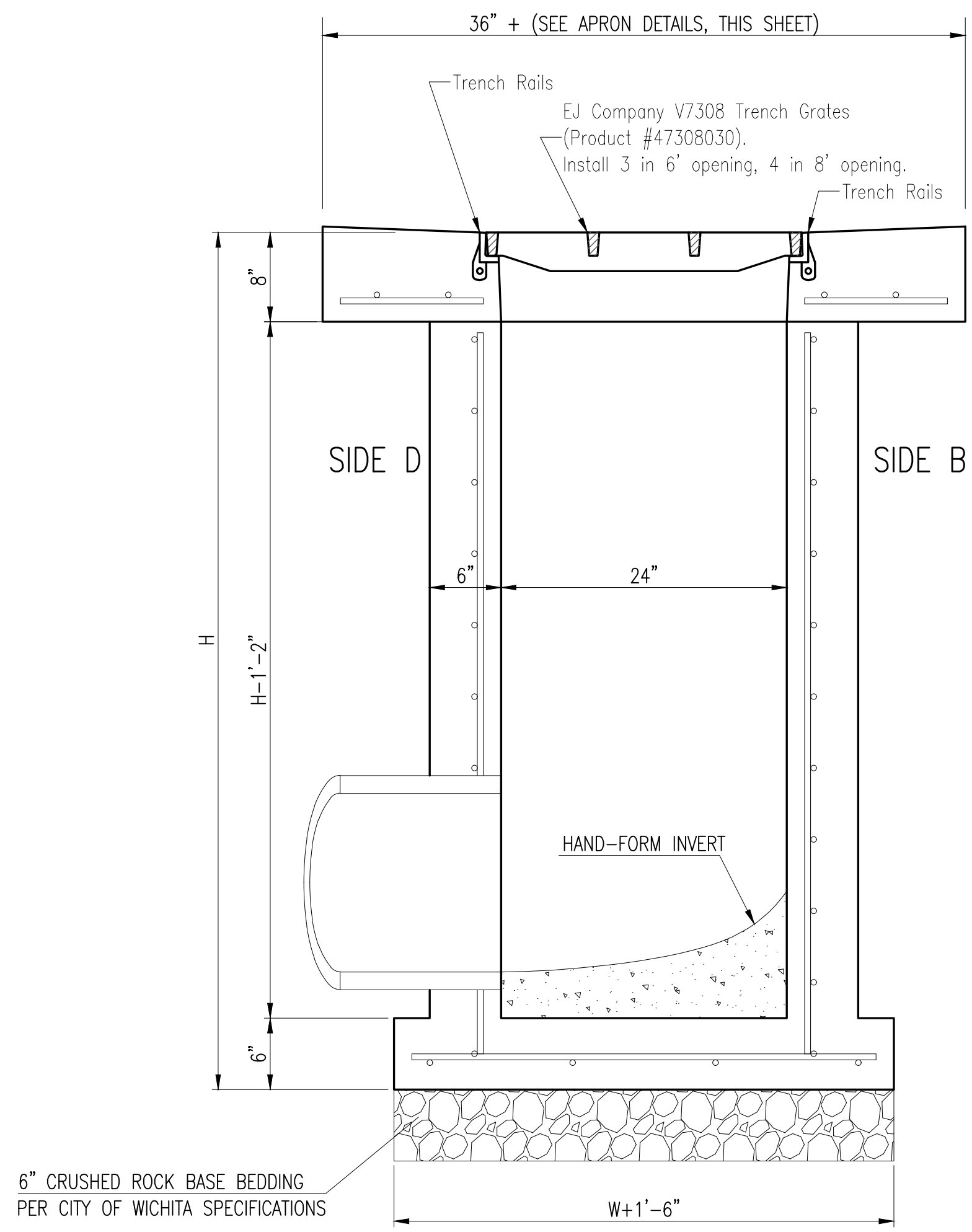
18" APRON

GENERAL NOTES

1. GRATE FRAME TO BE INSTALLED ON THIN MORTAR CUSHION TO INSURE FULL SUPPORT ALONG BRICK. CONCRETE USED FOR INLET CONSTRUCTION SHALL CONFORM TO CITY OF WICHITA SPECIFICATIONS FOR CONCRETE PAVEMENT MIX.
2. INLET INVERT SHALL BE SHAPED WITH 8 SACK SAND MIX CONCRETE TO CREATE FLOW CHANNELS AND TO INCREASE HYDRAULIC EFFICIENCY SUCH THAT THE INLET WILL BE SELF CLEANING BETWEEN ALL INLET AND/OR OUTLET PIPES.
3. THE ENDS OF ALL PIPES INSTALLED IN INLETS SHALL BE CUT OFF FLUSH WITH THE INSIDE FACE OF THE INLET WALL. SPACE BETWEEN PIPE WALL AND STRUCTURE OPENING TO BE FILLED WITH NON SHRINK GROUT.
4. SEE DETAILS FOR INLET TRENCH RAIL AND GRATE.
5. CONTRACTOR SHALL REMOVE LIFTING HOOKS AFTER INSTALLATION. RECESSES IN INLET WALL SHALL BE GROUTED FLUSH TO THE INLET WALL WITH HYDRAULIC CEMENT AFTER THE INLET IS IN PLACE. LIFTING HOLES THRU THE INLET WALL WILL NOT BE ACCEPTED.



SECTION "A-A"



SECTION "B-B"
SIDE OUTLET

BAUGHMAN COMPANY
 315 Ellis St.
 Wichita, KS 67211
 316-262-7271
 BaughmanCo.com

CORNEJO INDUSTRIAL DISTRICT
2'X6' & 2'X8' MODIFIED DROP INLET

STREET IMPROVEMENTS
 Street Paving Improvements

PROJECT NUMBER:
 472-2021-085726

DESIGN: PSB DRAWN: HJW
 DATE: Oct. 26, 2021

SHEET OF
 48 62

File: E:\Projects\Comerjo Industrial District_20-11-P603\Engineering\Phase 1 (only if Multiple Phases)\STR Plans\STR.dwg