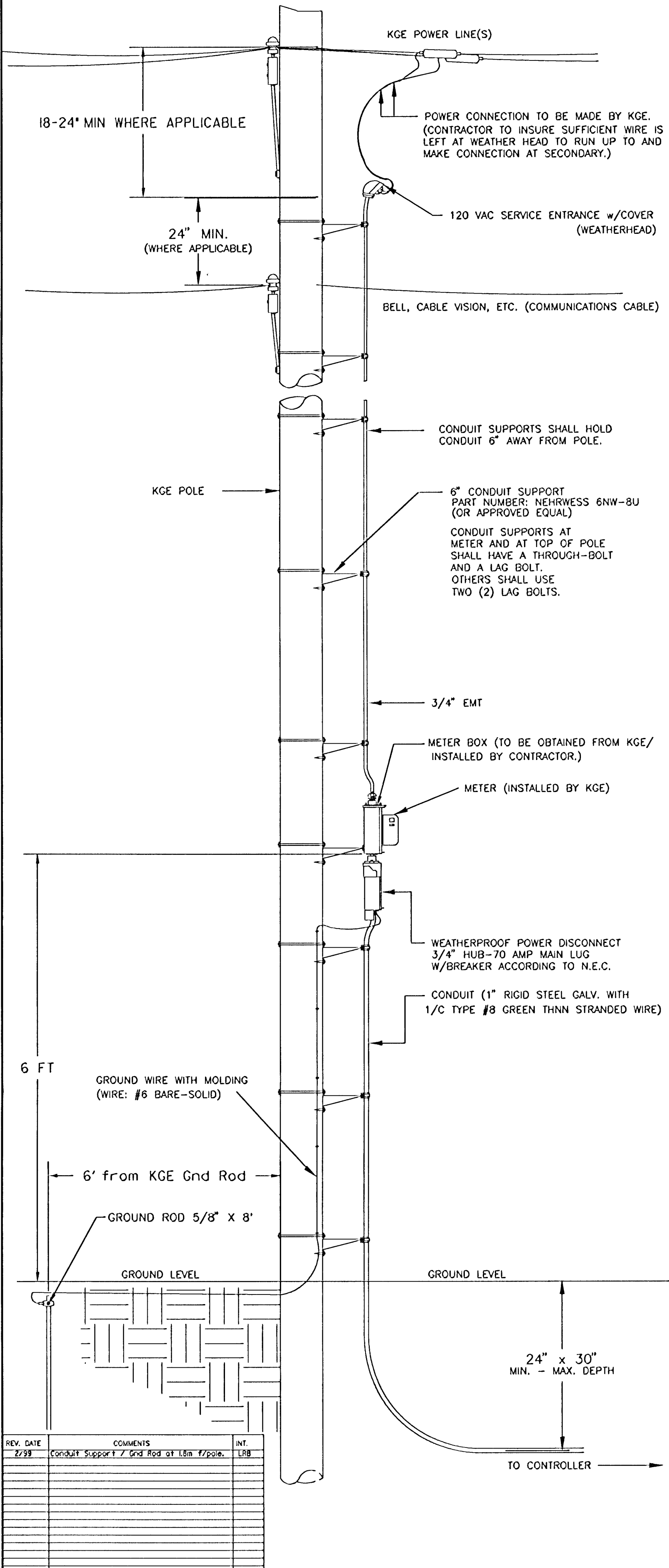
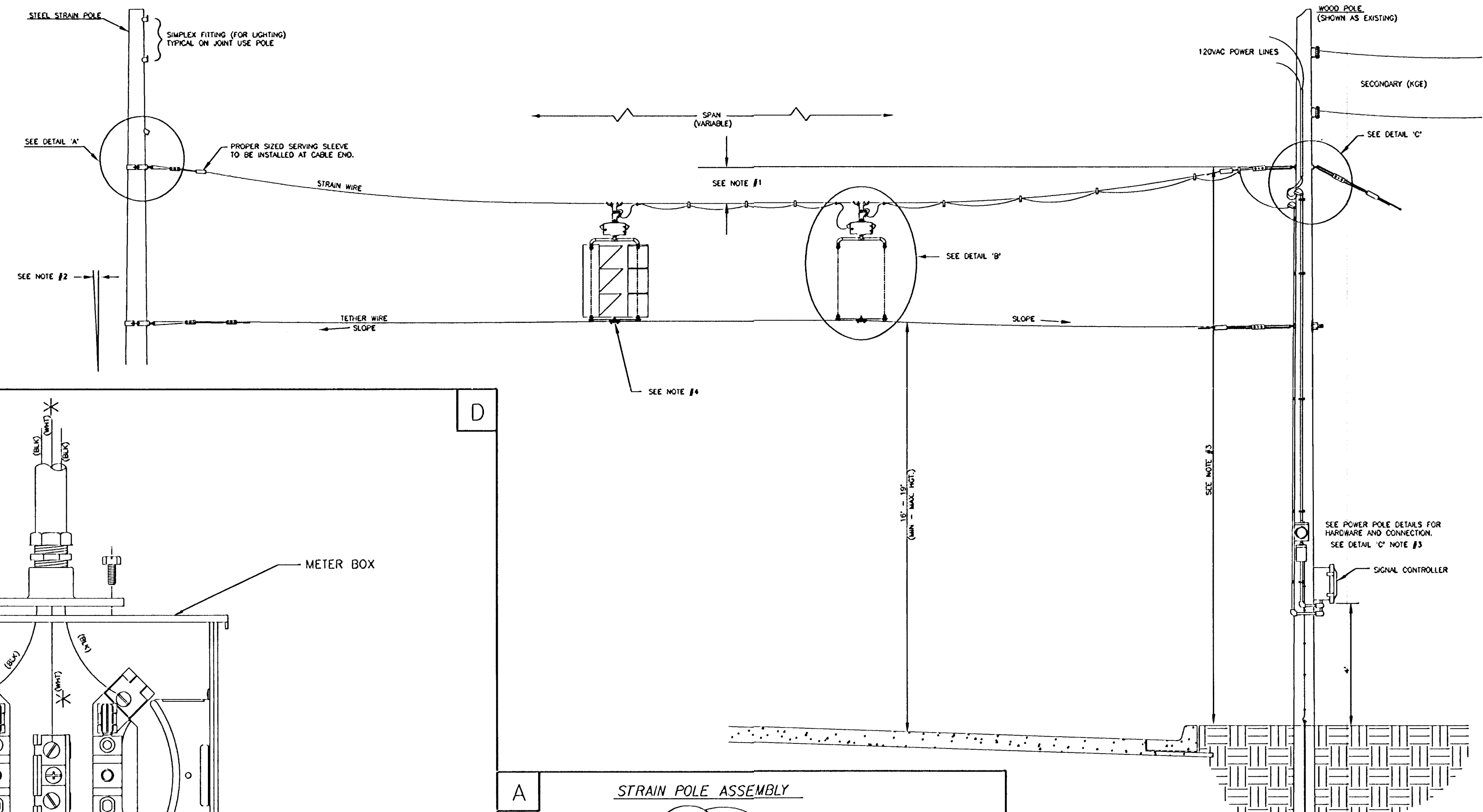


**POWER POLE DETAILS**

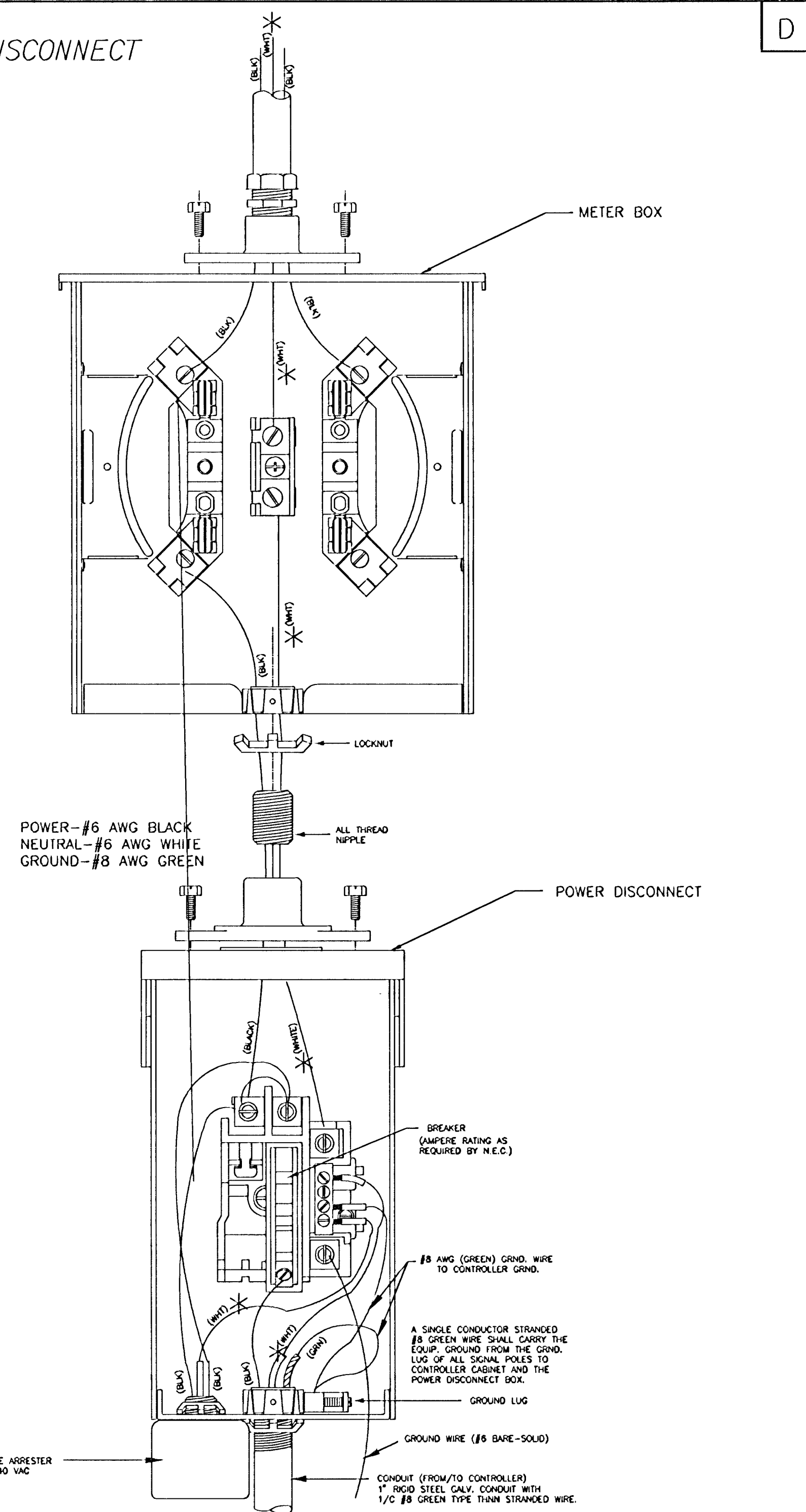


**SPANWIRE ASSEMBLY DETAILS**

1. MAX. SAG = 5% OF SPAN.
2. STANDARD BACKRAKE = 1.5\*
3. HEIGHT OF STRAIN WIRE HOOK-UP TO BE DETERMINED BY FIELD ENGINEER. TRAFFIC SIGNAL CABLE TO BE SECURED TO STRAIN (SPAN) WIRE WEATHERABLE NYLON CABLE HANGERS (12" CTR.) DETAIL 'B'
4. TETHER CLAMP TO BE DESIGNED TO RELEASE UNDER 'HIGH WIND LOAD' TO PERMIT SIGNAL 'FREE SWING'.

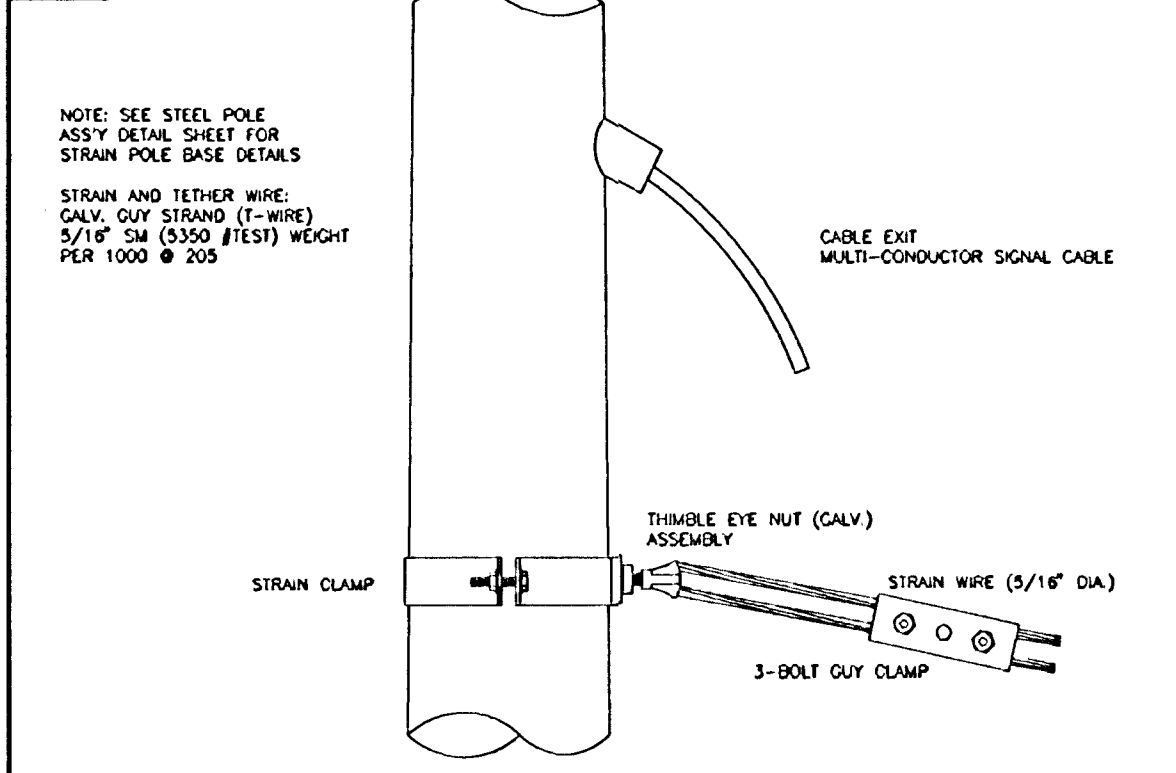


**METER BOX & POWER DISCONNECT DETAILS**

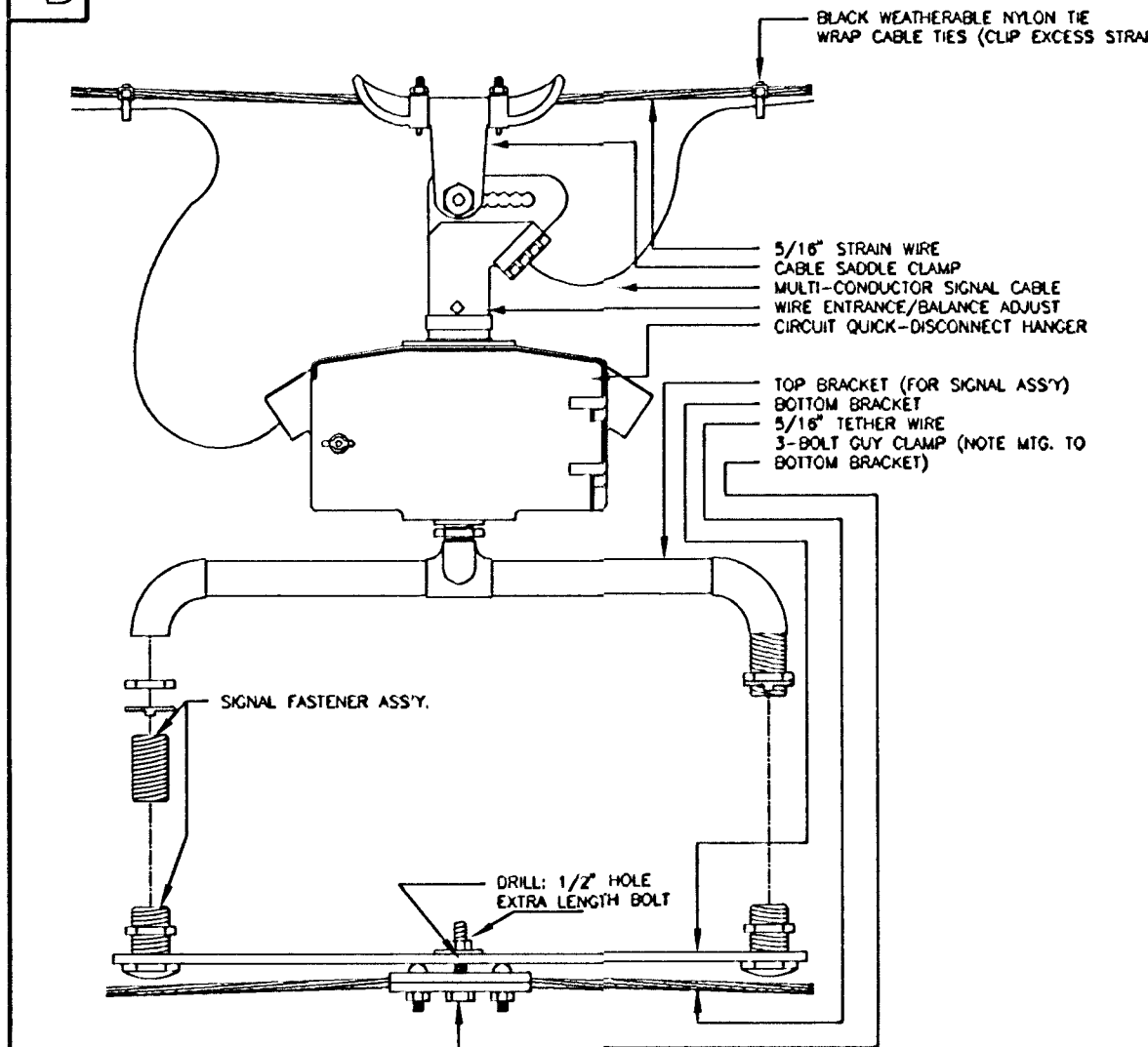


NOTE:  
\* TO BE MARKED WITH WHITE TAPE

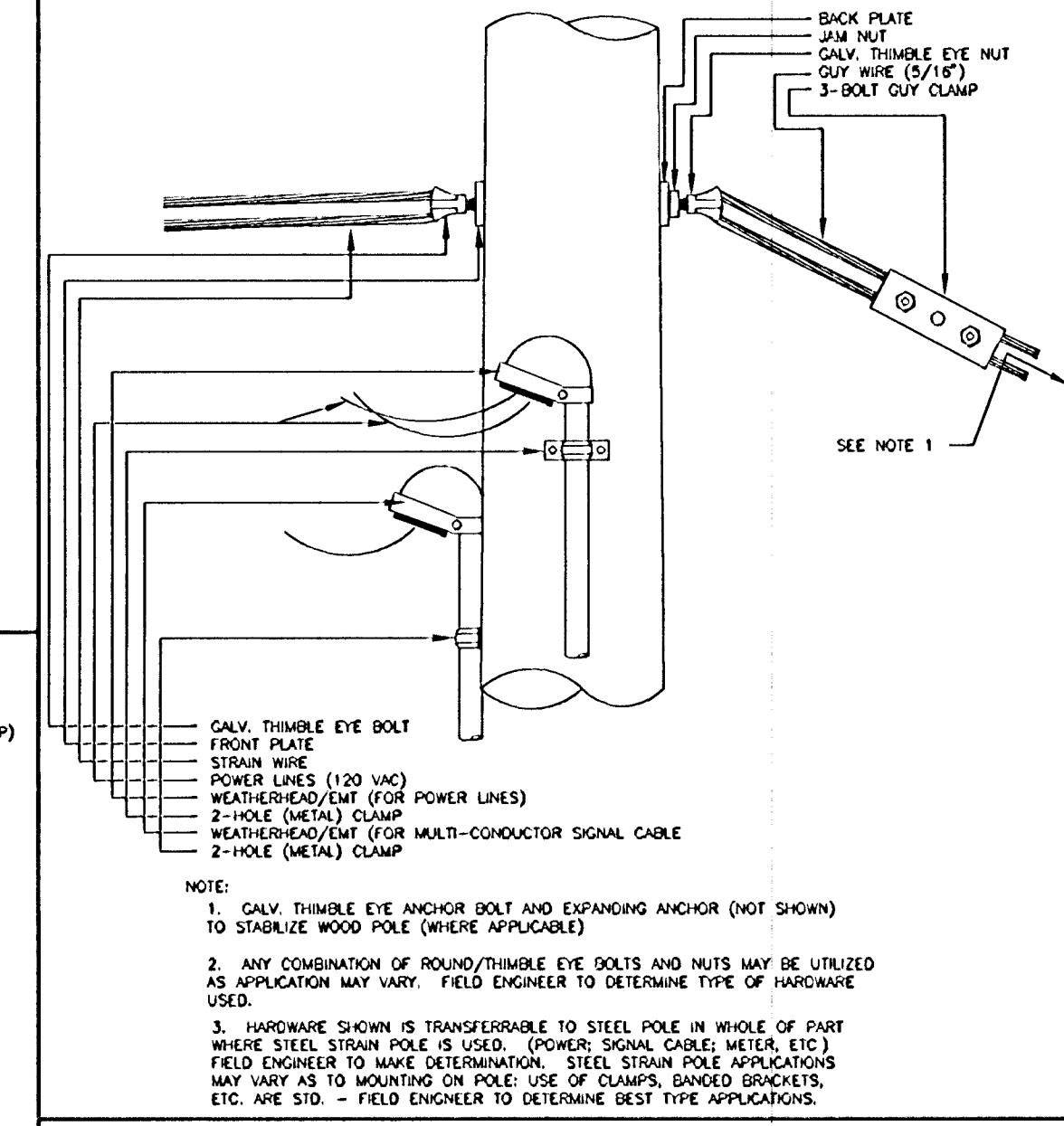
**A STRAIN POLE ASSEMBLY**



**B SIGNAL BRACKET ASSEMBLY DETAILS**



**C WOOD POLE ASSEMBLY DETAILS KGE POLE EXCLUDED**



PROJECT DESCRIPTION		
<b>POWER POLE AND SPAN POLE ASSEMBLY DETAILS</b>		
PROJECT NUMBER 472-76-245-83222-000-000-001		
DRAWN BY: T.M.	SCALE NO SCALE	REVISED BY: L. B.
DATE: FEB. 98		DATE: 2/26/99
CITY OF WICHITA DEPARTMENT OF PUBLIC WORKS		
DIVISION OF TRAFFIC ENGINEERING WM. G. MCKINLEY P.E. TRAFFIC ENGINEER		SHEET 22 OF 32

i: 1999/99064/powp-sp.dgn  
Date Plotted: June 26, 2000  
Deliver to: Penni Moore