

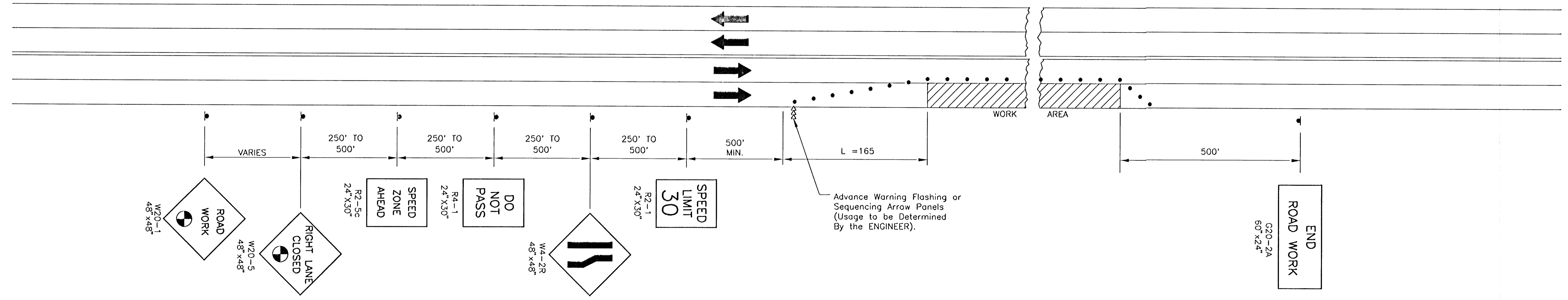
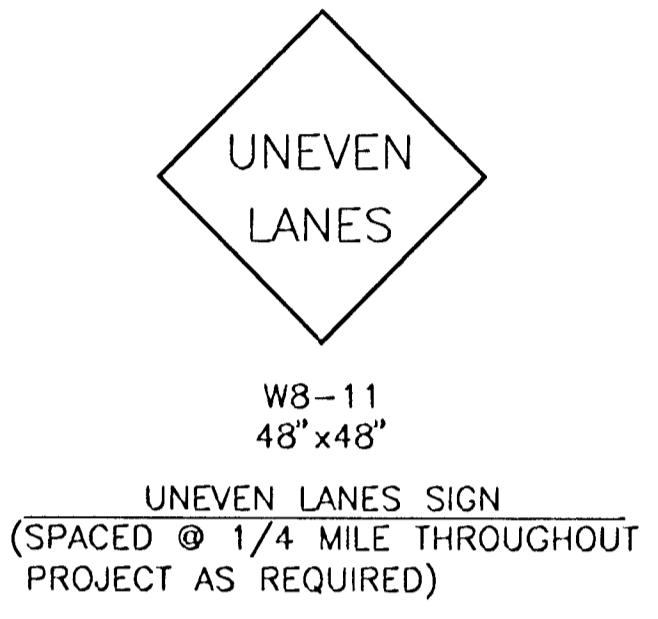
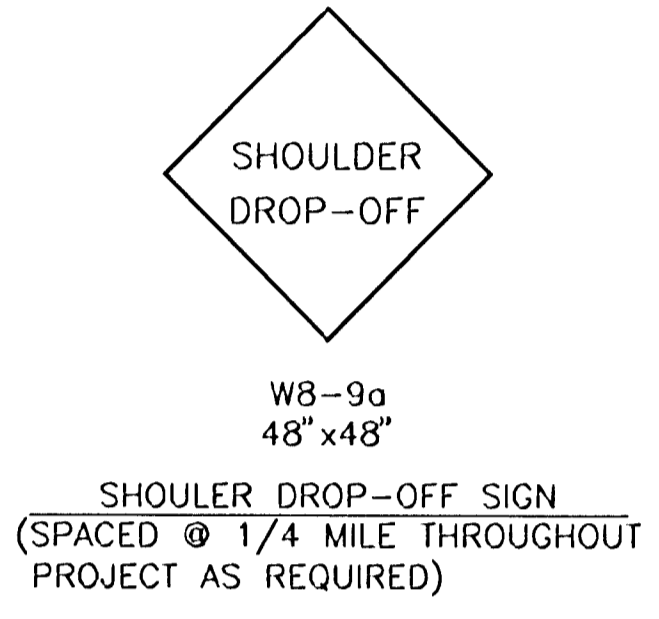
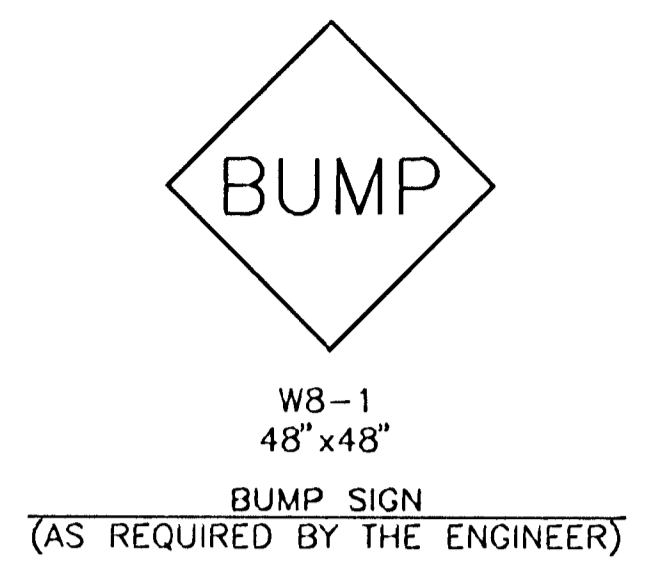
LIST OF TRAFFIC CONTROL DEVICES *

MUTCD DEVICE NO.	NO.	FLASHERS		REMARKS
		TYPE A	TYPE B	
W20-1	2		2	
W20-5	2		2	
R2-5c	2			
R4-1	2			
W4-2	2		2	
R2-1	2			
G20-2	2			
W8-9a				
W8-11				
W8-1				

Delineators & Channelization Devices					
DEVICE	NO.	SIZE	FLASHERS		
			TYPE A	TYPE B	TYPE C
BARRICADES					
TYPE III	3		6		
TYPE II					
TYPE I					
DRUMS	74				
CONES					
TUBES					
VERTICAL PANELS					
SINGLE					
BACK TO BACK					
PAVEMENT MARKING	WHITE	YELLOW			
4" BROKEN (Lin. Ft.)					
4" SOLID (Lin. Ft.)					
TEMPORARY STRIPING (Line Mile)					
ARROW PANEL	2				

* FOR INFORMATION ONLY

SEE SHEET NO. _____ FOR TRAFFIC CONTROL NOTES



Advance Warning Flashing or Sequencing Arrow Panels (Usage to be Determined By the ENGINEER).

TAPER FORMULAS
 L = S x W FOR SPEEDS OF 45 M.P.H. OR MORE
 $L = \frac{WS^2}{60}$ FOR SPEEDS OF 40 M.P.H. OR LESS
 WHERE: L = MINIMUM LENGTH OF TAPER
 S = NUMERICAL VALUE OF POSTED SPEED PRIOR TO WORK
 W = WIDTH OF OFFSET

TRAFFIC CONTROL PLAN FOR HANDLING TRAFFIC THROUGH CONSTRUCTION ON A FOUR-LANE UNDIVIDED ROADWAY

TRAFFIC CONTROL PLAN FOR ONE LANE CLOSED ON A FOUR-LANE ROADWAY T.C. NO. 6.0

PREPARED BY
 SEDGWICK COUNTY BUREAU OF PUBLIC SERVICES
 HIGHWAY DIVISION

DAVID C. SPEARS, P.E. DIRECTOR/COUNTY ENGINEER

REVISED	SCALE	DESIGNED	TRACED	CHECKED	SHEET NO.
	NONE	M.R.B.	D.R.S.	M.R.B.	24
	DATE	6/88	4/94	4/94	
PLANFILE TC-6-0			TOTAL SHEETS	32	

Distance To Be Determined By The ENGINEER.

- Channelization devices.

i: 1999/99687/001/ac-6-0.dgn
 Date Plotted: June 26, 2000
 Deliver to: Penni Moore