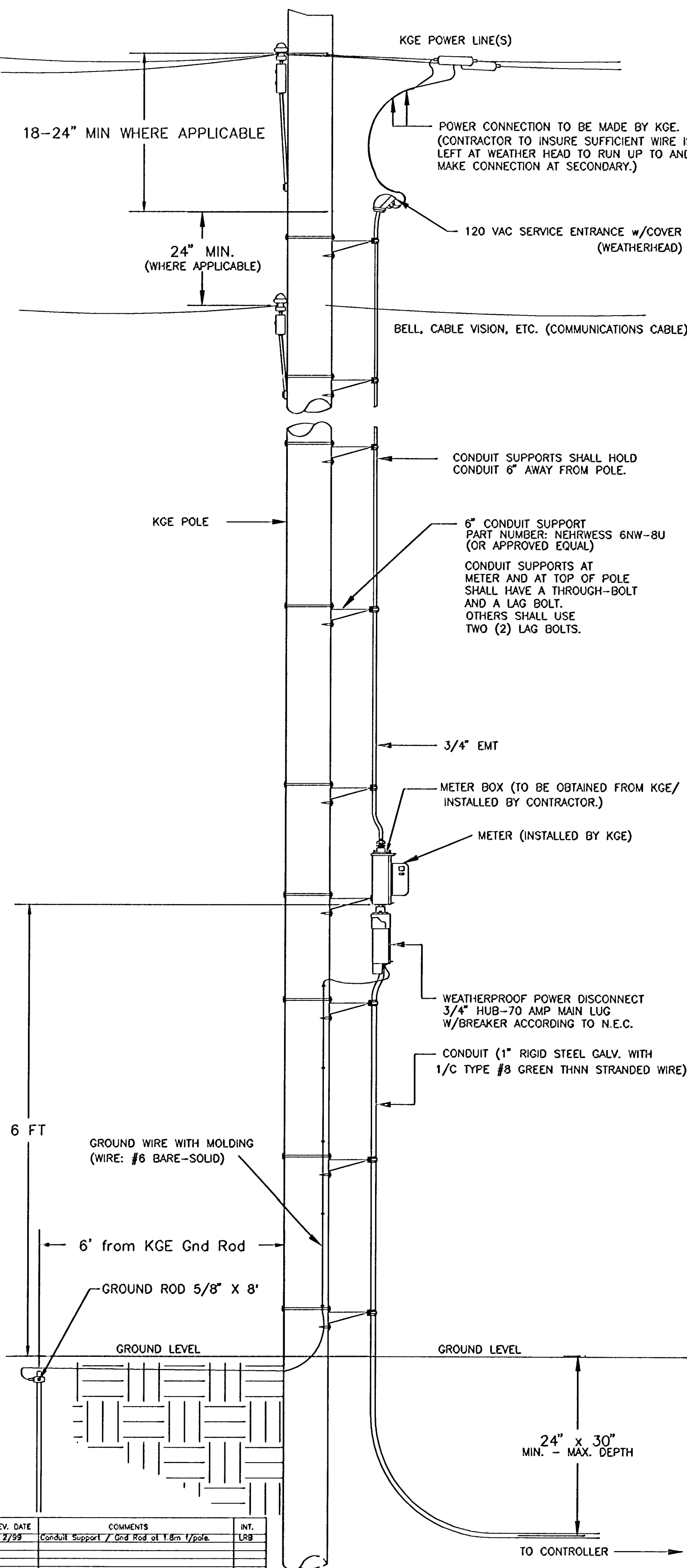
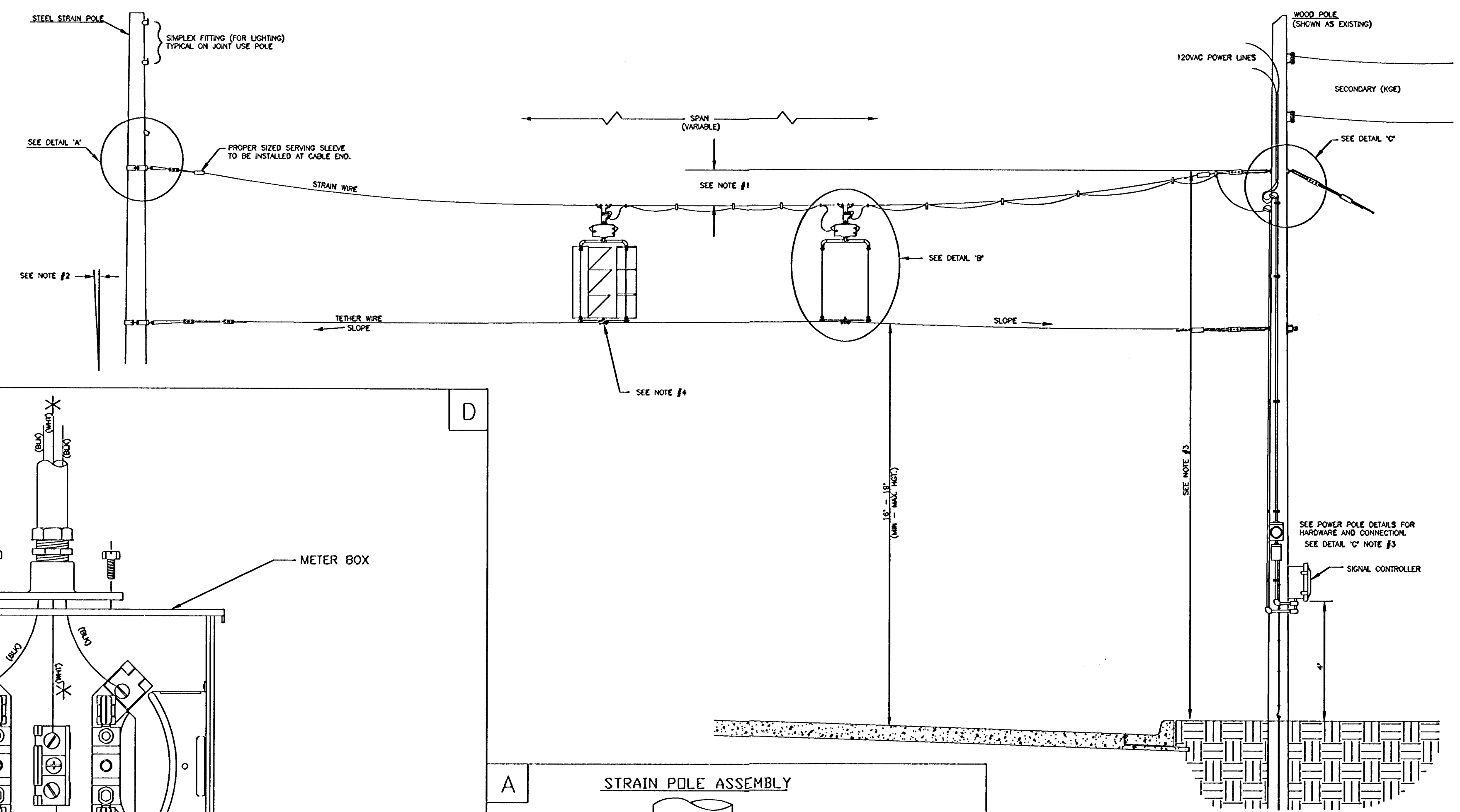


POWER POLE DETAILS



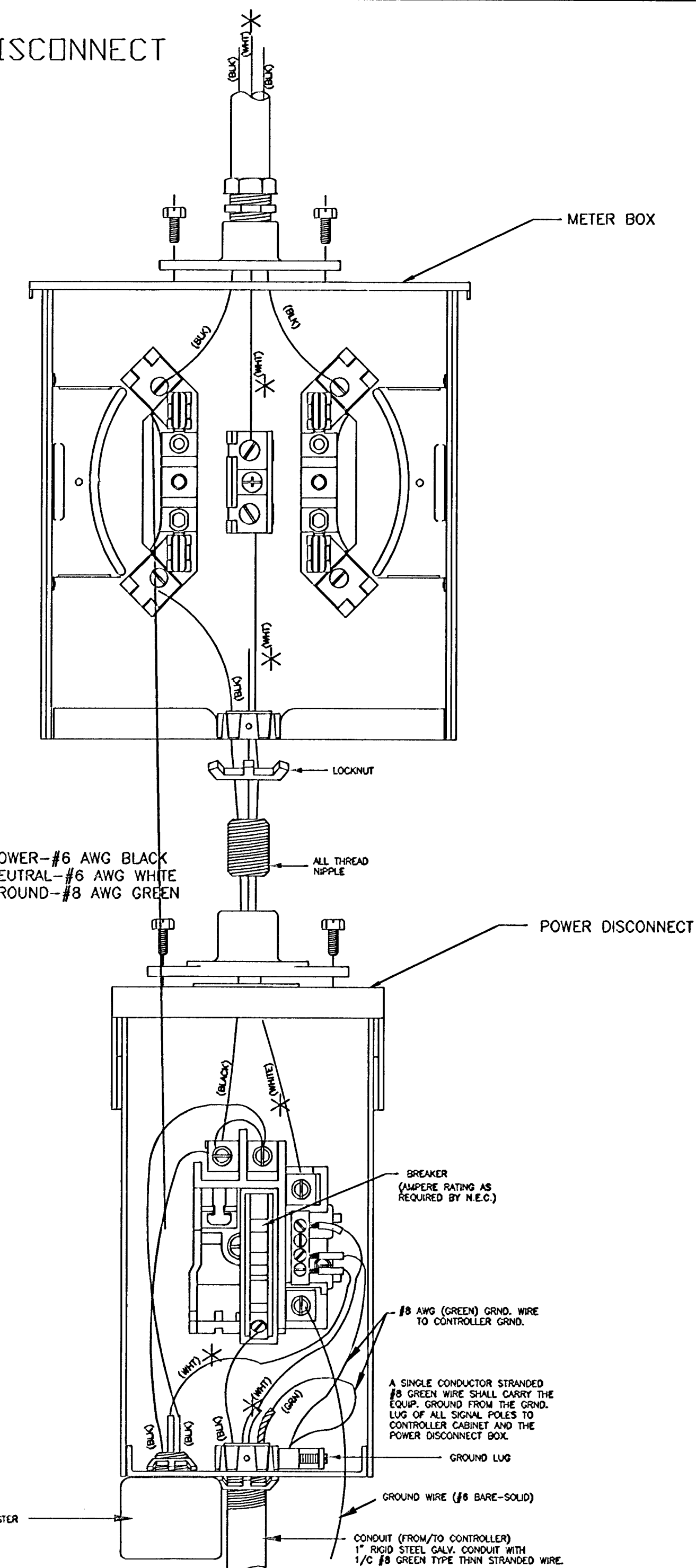
SPANWIRE ASSEMBLY DETAILS

1. MAX. SAG = 5% OF SPAN.
2. STANDARD BACKRAKE = 1.5%
3. HEIGHT OF STRAIN WIRE HOOK-UP TO BE DETERMINED BY FIELD ENGINEER. TRAFFIC SIGNAL CABLE TO BE SECURED TO STRAIN (SPAN) WIRE WEATHERABLE NYLON CABLE HANGERS (12" CTR.) DETAIL 'B'
4. TETHER CLAMP TO BE DESIGNED TO RELEASE UNDER 'HIGH WIND LOAD' TO PERMIT SIGNAL 'FREE SWING'.

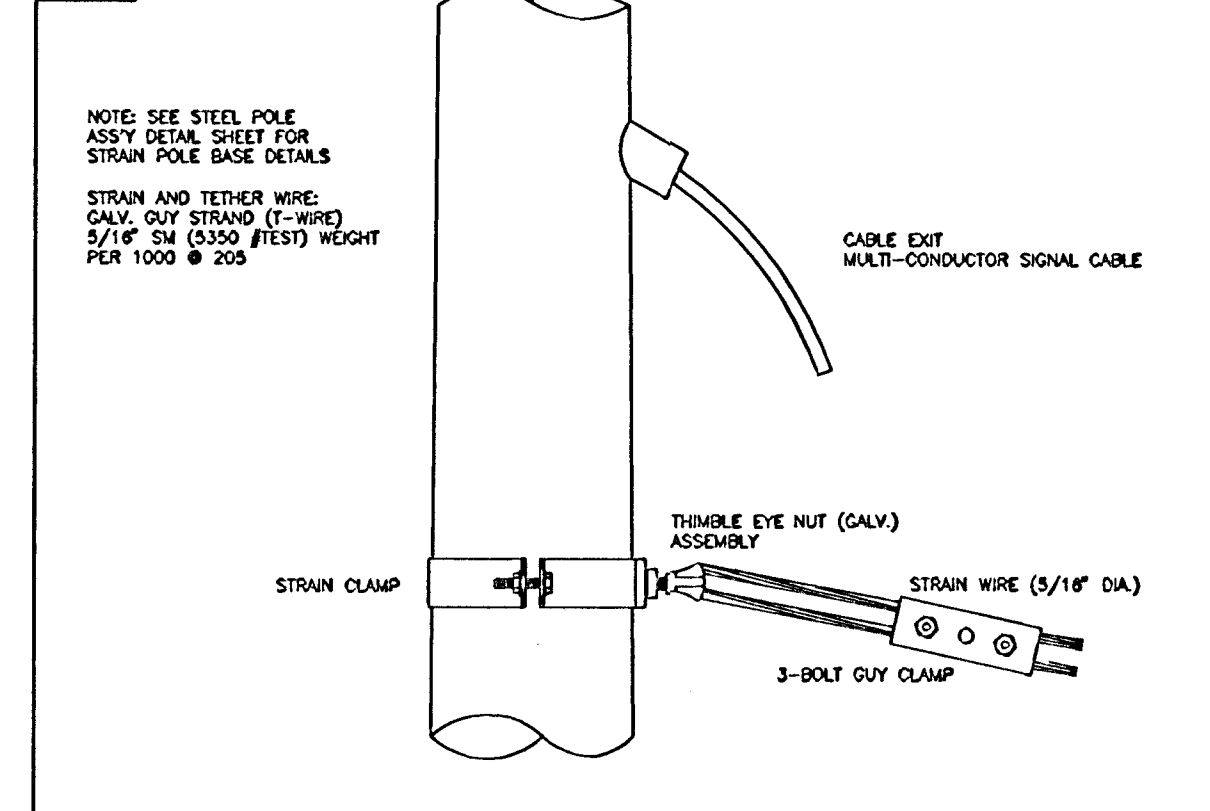


METER BOX & POWER DISCONNECT DETAILS

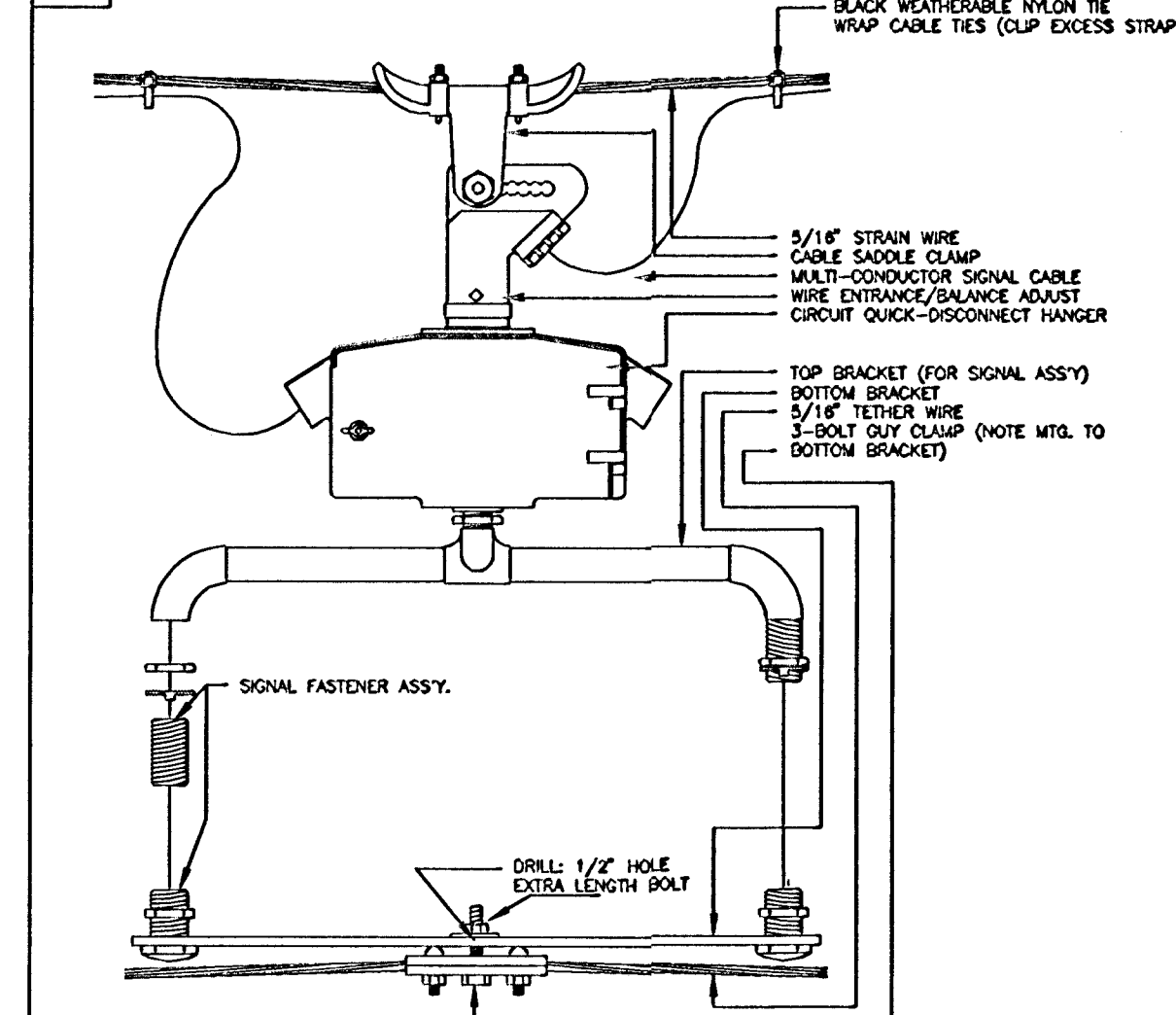
NOTE:
* TO BE MARKED WITH WHITE TAPE



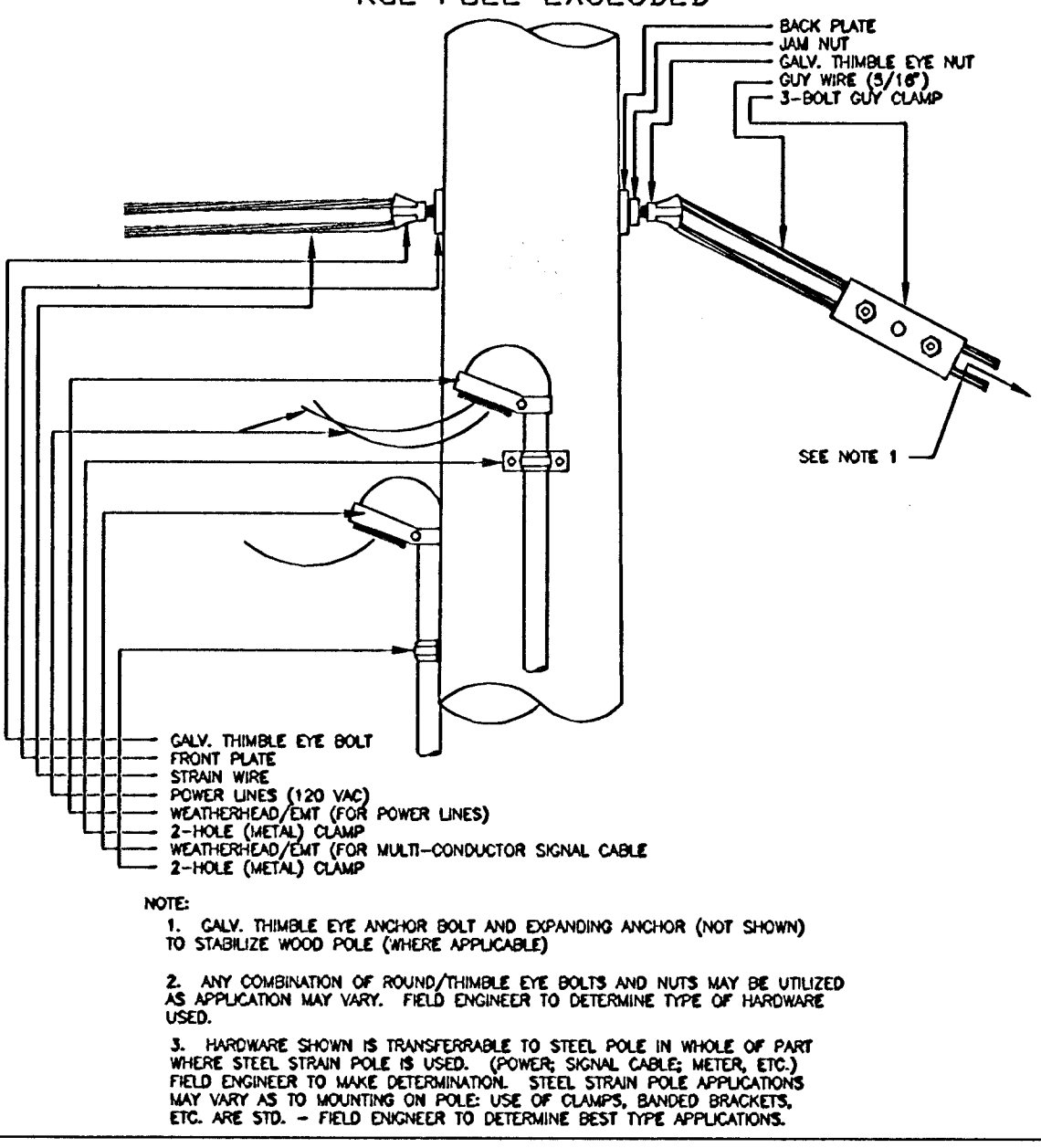
A STRAIN POLE ASSEMBLY



B SIGNAL BRACKET ASSEMBLY DETAILS



C WOOD POLE ASSEMBLY DETAILS KGE POLE EXCLUDED



DSNR: SLD OPER: SLD SCALE: 1=1.00 Q: 1/19/96 196450\002\POWP-SP 09-04-2002 09:56:50 am

REV. DATE	COMMENTS	INT.
2/99	Conduit Support / Gnd Rod at 1.8m 1/pole	LRB

ZOO BOULEVARD BIKE PATH

POWER POLE AND SPAN POLE ASSEMBLY DETAILS

PROJECT NUMBER
472-76-245-83247-000-001

DRAWN BY: T.M.	SCALE NO SCALE	REVISED BY: L. B.
DATE: FEB. 96		DATE: 2/26/99

CITY OF WICHITA
DEPARTMENT OF PUBLIC WORKS

DIVISION OF TRAFFIC ENGINEERING
WM. C. MCKINLEY P.E. TRAFFIC ENGINEER

SHEET 15 OF 24