

Contractor shall Sawcut & Remove and Replace Approx. 12 L.F. of 6' wide, 4" Concrete Sidewalk. Contractor shall sawcut at nearest sidewalk joint locations. (See Note 19 on Title Sheet for sidewalk removal & replacement.)

Contractor shall remove Existing Ditch inlet and Approx. 13 L.F. Existing 18" RCP

Sta. 0+00.00, Begin 18" RCP @ Existing Curb Inlet. Contractor shall seal new 18" RCP to Inlet Wall with Quick-Set Hydraulic cement. Contractor shall seal all inlet imperfections with said cement. FL In=170.29 N 9486.31 E 10032.41

Sta. 0+17.78, CAUTION!!! Existing Underground AT&T Direct Bury 1500PR Copper Cable (3" Dia.) Approximate Depth=24". Expose to Verify. Contractor shall Coordinate with Jason Edwards, 268-2008.

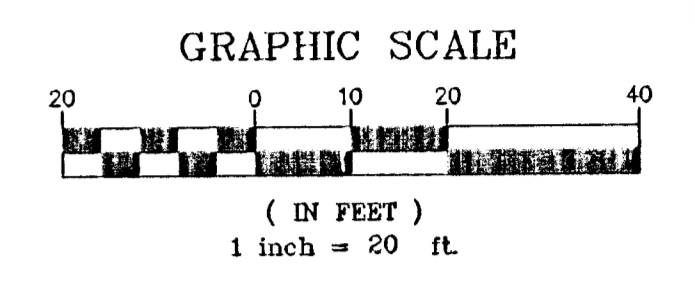
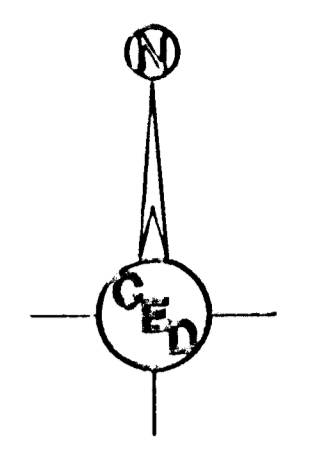
Install 33.64 L.F. of 18" RCP @ 3.56% Slope

Sta. 0+33.64, Install Type 1 Curb Inlet (L=5', W=3') Top Elev.=174.14 FL Out 18"(W)=171.49 N 9488.88 (Inside North Corner E 10066.05 on Rear Wall) N 9483.88 (Inside South Corner E 10066.06 on Rear Wall)

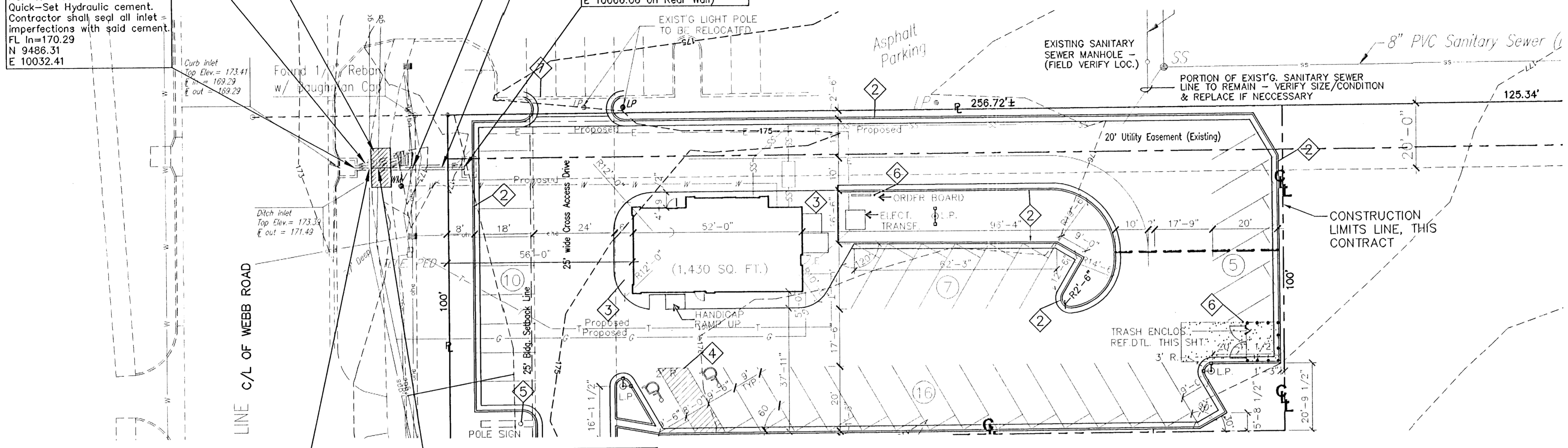
**SURVEY DISCLAIMER:**  
TOPOGRAPHIC SURVEY AND CONTOUR MAP USED IN PREPARING PLANS WAS PROVIDED BY PROFESSIONAL ENGINEERING CONSULTANTS, P.A., 303 S. TOPEKA, WICHITA, KS. ENGINEER DOES NOT GUARANTEE SURVEY ELEVATIONS FOR ACCURACY. CONTRACTOR SHALL VERIFY ELEVATIONS AND NOTIFY ENGINEER OF ANY DISCREPANCIES.

BM #1: RAILROAD SPIKE IN WEST FACE OF 6TH POWER POLE SOUTH OF HARRY ON EAST SIDE OF WEBB ROAD. ELEV. 176.86  
BM #2: CITY OF WICHITA BRASS DISK AT THE S.E. CORNER OF TRAFFIC SIGNAL BASE AT THE N.W. CORNER OF THE INTERSECTION OF HARRY AND WEBB ROAD. ELEV. 171.64

UTILITIES SHOWN REPRESENT THE BEST INFORMATION AVAILABLE FOR DESIGN. ADDITIONAL UTILITIES MAY BE PRESENT ON THIS PROJECT. THE CONTRACTOR SHALL BE RESPONSIBLE FOR DETERMINING THE EXACT LOCATION, DEPTH AND SIZE OF ALL UNDERGROUND UTILITIES PRIOR TO CONSTRUCTION. THE CONTRACTOR SHALL BE LIABLE FOR ANY DAMAGE CAUSED BY THE FAILURE TO DO SO.

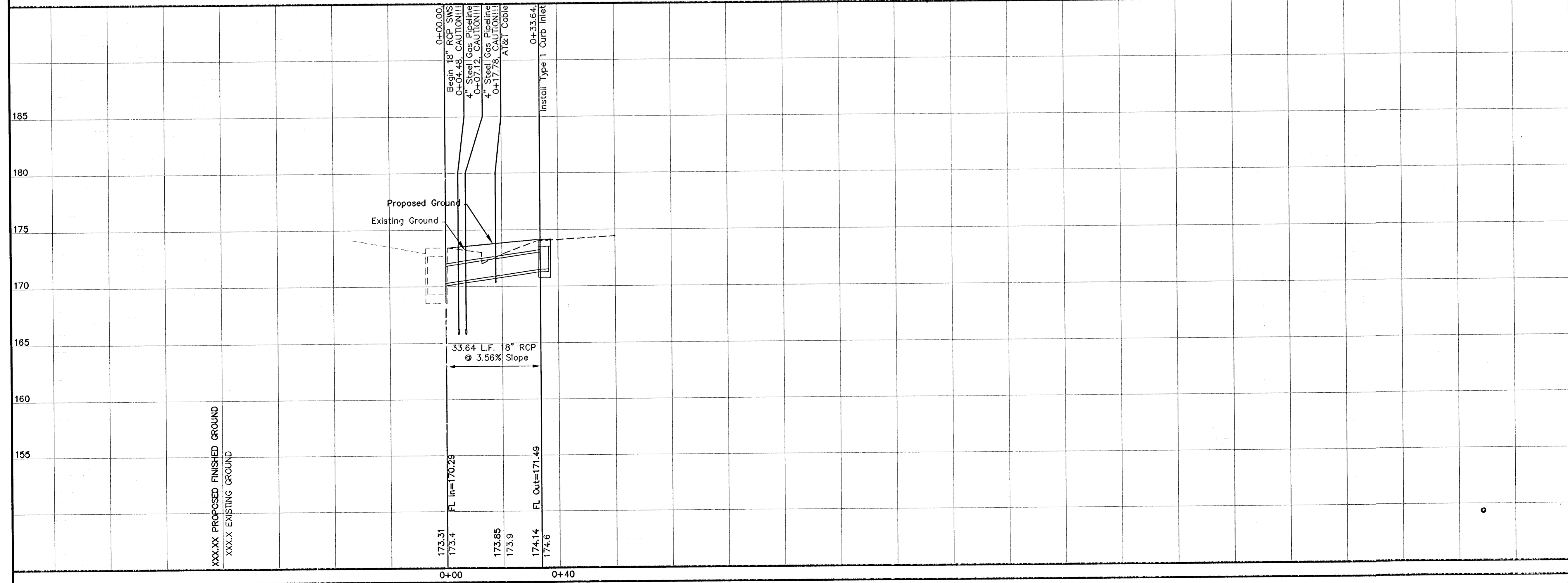


- LEGEND**
- C-D Calculated from Deeded dimension
  - M Measured dimension
  - D Deeded dimension
  - Post Gate Post
  - GP Guy Pole
  - LP Light Pole
  - DM Deadman
  - Transformer
  - Electrical Pedestal
  - TSM Traffic Signal Manhole
  - SS Sanitary Sewer Manhole
  - SDC Storm Water Drain Curb Inlet
  - Telephone Pedestal
  - FH Fire Hydrant
  - WM Water Meter
  - WV Water Valve
  - Overhead Electric Line
  - Buried Electric Line
  - Buried Telephone Line
  - Gas Line
  - Sanitary Sewer Line



Sta. 0+04.48, CAUTION!!! Existing Underground Raytheon 4" Steel Natural Gas Pipe Line, Approximate Depth=84", Clearance=47". Contractor shall Contact Joe Freeman, 676-7911, prior to construction.

Sta. 0+07.12, CAUTION!!! Existing Underground Raytheon 4" Steel Natural Gas Pipe Line, Approximate Depth=84", Clearance=48". Contractor shall Contact Joe Freeman, 676-7911, prior to construction.



SWS IMPROVEMENTS TO SERVE  
**SUBWAY SANDWICH SHOP**  
1680 S. WEBB ROAD, WICHITA, KANSAS  
C.O.W. PROJ. NO.: 1525 PPS (607861)  
**CERTIFIED ENGINEERING DESIGN, P.A.**  
810 WEST DOUGLAS, SUITE C  
WICHITA, KANSAS 67203  
PH.(316)262-8808 FAX.(316)262-1669

**GED**

DESIGNED: HDF	SCALE: 1"=20'	SHEET 3
DRAWN: CKW	DATE: 8/06	TOTAL 4
CHECKED: HDF	FILE: SbwSGPHrry&Webb	