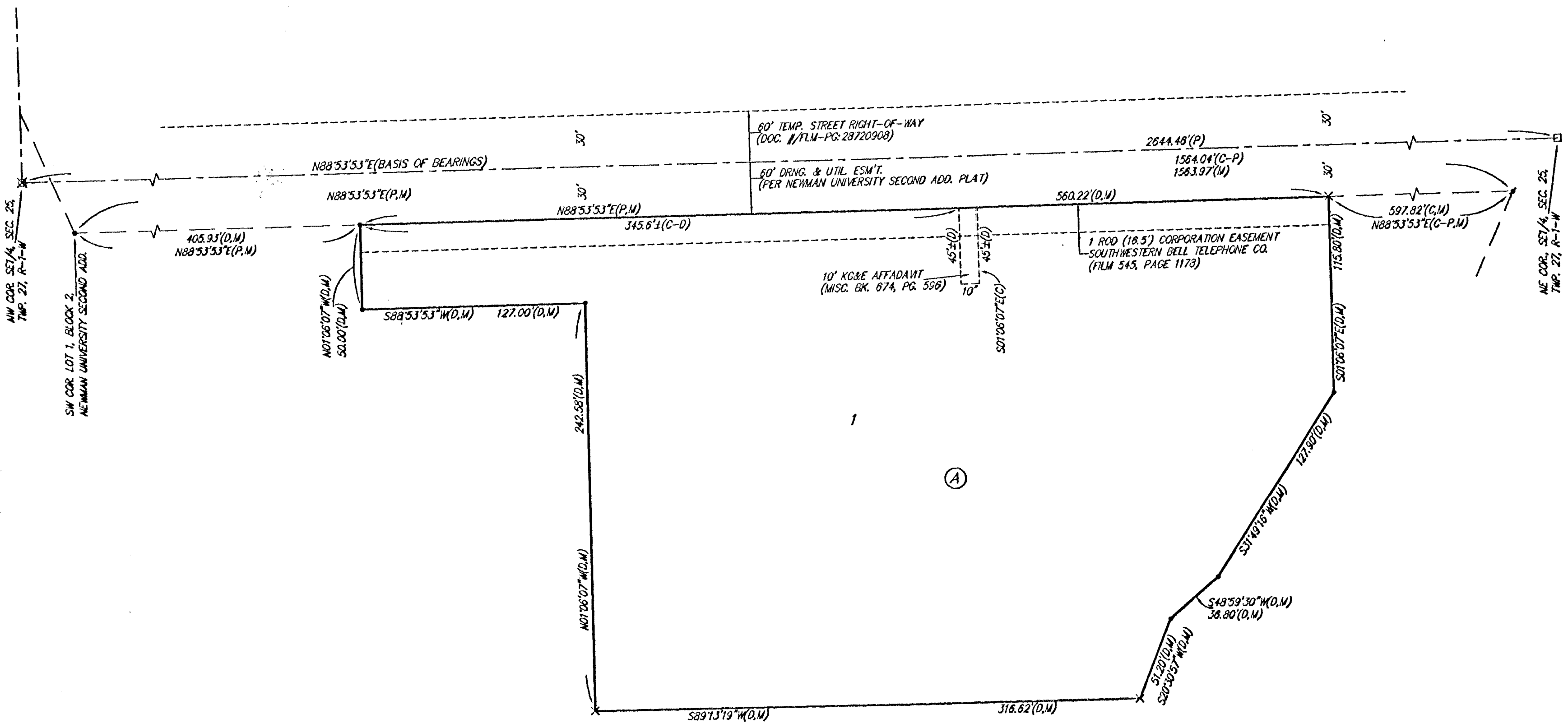
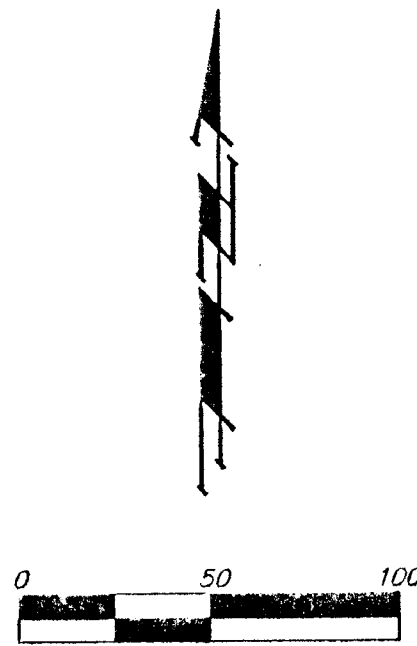


NEWMAN UNIVERSITY 3RD ADDITION WICHITA, SEDGWICK COUNTY, KANSAS



- = #4 REBAR W/ "BAUGHMAN" CAP (SET)
- = #4 REBAR W/ "BAUGHMAN" CAP (FOUND)
- x = CROSS CUT (SET)
- = CROSS CUT ON THIMBLE CAP IN THIMBLE (FOUND)
- ⊗ = "V" NOTCH ON MANHOLE LID (SET)

- (P) = PLATTED
- (M) = MEASURED
- (D) = DESCRIBED
- (C) = CALCULATED
- (C-D) = CALCULATED PER DESCRIBED INFO
- (C-P) = CALCULATED PER PLATTED INFO



NOTE:
A DRAINAGE PLAN HAS BEEN DEVELOPED FOR THIS SUBDIVISION AND IS ON FILE WITH THE CITY OF WICHITA, KANSAS. DRAINAGE INTENT SHALL REMAIN AS DEPICTED OR AS MODIFIED WITH THE APPROVAL OF THE CITY ENGINEER OF THE CITY OF WICHITA, KANSAS. NO OBSTRUCTIONS WHICH IMPEDE THE FLOW OF THIS DRAINAGE PLAN SHALL BE ALLOWED.

State of Kansas) SS We, Baughman Company, P.A., Surveyors in
Sedgwick County) aforesaid county and state do hereby certify that we have surveyed and
platted "NEWMAN UNIVERSITY 3RD ADDITION", Wichita, Sedgwick County,
Kansas and that the accompanying plat is a true and correct exhibit of
the property surveyed, described as part of the SE1/4 of Sec. 25, Twp.
27-S, R-1-W of the 6th P.M., Sedgwick County, Kansas, and further
described as follows: Commencing at the SW corner of Lot 1, Block 2,
Newman University Second Addition, an Addition to Wichita, Sedgwick
County, Kansas; thence N88°53'53"E along the south line of said Lot 1,
405.93 feet for a point of beginning; thence continuing N88°53'53"E along
the south line of said Lot 1, 560.22 feet; thence S01°06'07"E, 115.80 feet;
thence S31°49'16"W, 127.90 feet; thence S48°59'30"W, 36.80 feet; thence
S20°30'57"W, 51.20 feet; thence S89°13'19"W, 316.62 feet; thence
N01°06'07"W, 242.58 feet; thence S88°53'53"W, 127.00 feet; thence
N01°06'07"W, 50.00 feet to the point of beginning.

Existing public easements and dedications
being vacated by virtue of K.S.A. 12-512(b).
All being situated in the SE1/4 of Sec. 25, Twp. 27-S,
R-1-W of the 6th P.M., Sedgwick County, Kansas

Baughman Company, P.A.

Michael D. Conroy, Surveyor
Michael G. Conroy

Know all men by these presents that we,
the undersigned, have caused the land in the surveyors certificate to be
platted into a Lot and a Block to be known as "NEWMAN UNIVERSITY 3RD
ADDITION", Wichita, Sedgwick County, Kansas.
Newman University Inc., a Kansas
not-for-profit corporation

Harry Papa, Vice-President of Operations
Harry Papa

State of Kansas) SS The foregoing instrument acknowledged before
Sedgwick County) me, this 5th day of June, 2006, by Harry Papa, Vice-President
of Operations for Newman University, Inc., a Kansas not-for-profit corporation,
on behalf of the not-for-profit corporation.

Mary McHenry, Notary Public
My App't. Exp. August 14, 2008

We, the undersigned holders of a mortgage on
the above described property, do hereby consent to this plat of "NEWMAN
UNIVERSITY 3RD ADDITION", Wichita, Sedgwick County, Kansas.

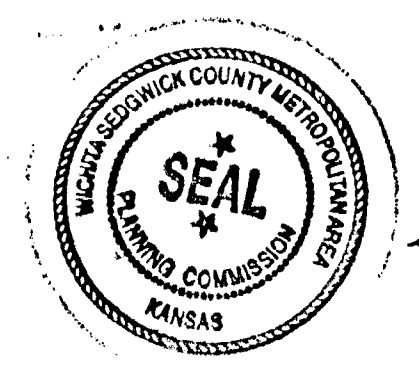
Commerce Bank, N.A.

James H. Mai, VICE PRES.
JAMES H. MAI

State of Kansas) SS The foregoing instrument acknowledged be-
Sedgwick County) fore me, this 14th day of June, 2006, by JAMES H. MAI,
VICE PRESIDENT of Commerce Bank, N.A., on behalf of the bank.

Pamela J. Maurer, Notary Public
PAMELA J. MAURER
My App't. Exp. 02/27/07

This plat of "NEWMAN UNIVERSITY 3RD
ADDITION", Wichita, Sedgwick County, Kansas has been submitted to and
approved by the Wichita-Sedgwick County Metropolitan Area Planning
Commission, Wichita, Kansas.
Dated, this 20th day of June, 2006.
Wichita-Sedgwick County Metropolitan Area Planning Commission



Daniel A. Downing, Jr., Chair
Harold L. Warner, Jr.
John L. Schlegel, Secretary
John L. Schlegel

This plat approved and all dedications
shown hereon accepted by the City Council of the City of Wichita,
Kansas, this 27th day of June, 2006.



Carlos Mayans, Mayor
Karen Sublett, City Clerk
Karen Sublett

Reviewed in accordance with K.S.A. 58-2005
on this 8th day of June, 2006.



Tricia L. Robello, L.S. #1246
Deputy County Surveyor
Sedgwick County, Kansas

Harry Papa, Vice-President of Operations
Harry Papa

State of Kansas) SS The foregoing instrument acknowledged before
Sedgwick County) me, this 5th day of June, 2006, by Harry Papa, Vice-President
of Operations for Newman University, Inc., a Kansas not-for-profit corporation,
on behalf of the not-for-profit corporation.

Mary McHenry, Notary Public
My App't. Exp. August 14, 2008

We, the undersigned holders of a mortgage on
the above described property, do hereby consent to this plat of "NEWMAN
UNIVERSITY 3RD ADDITION", Wichita, Sedgwick County, Kansas.

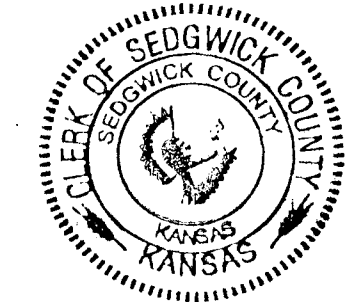
Commerce Bank, N.A.

James H. Mai, VICE PRES.
JAMES H. MAI

State of Kansas) SS The foregoing instrument acknowledged be-
Sedgwick County) fore me, this 14th day of June, 2006, by JAMES H. MAI,
VICE PRESIDENT of Commerce Bank, N.A., on behalf of the bank.

Pamela J. Maurer, Notary Public
PAMELA J. MAURER
My App't. Exp. 02/27/07

Entered on transfer record this 14th day
of July, 2006.



Don Brace, County Clerk
Don Brace

State of Kansas) SS This is to certify that this plat has been
Sedgwick County) filed for record in the office of the Register of Deeds, this 12th day
of July, 2006, at 11:19:36 o'clock P.M.; and is duly recorded.

Bill Meek, Register of Deeds
Bill Meek

Tonya Buckingham, Deputy
Tonya Buckingham

Register of Deeds - Bill Meek
DOC #/FLM-PG: 28798019
Receipt #: 1827857
Pages Recorded: 1
Casher Initials: JP
Authorized By: [Signature]
Date Recorded: 7/12/2006 11:19:36 AM
Recording Fee: \$20.00