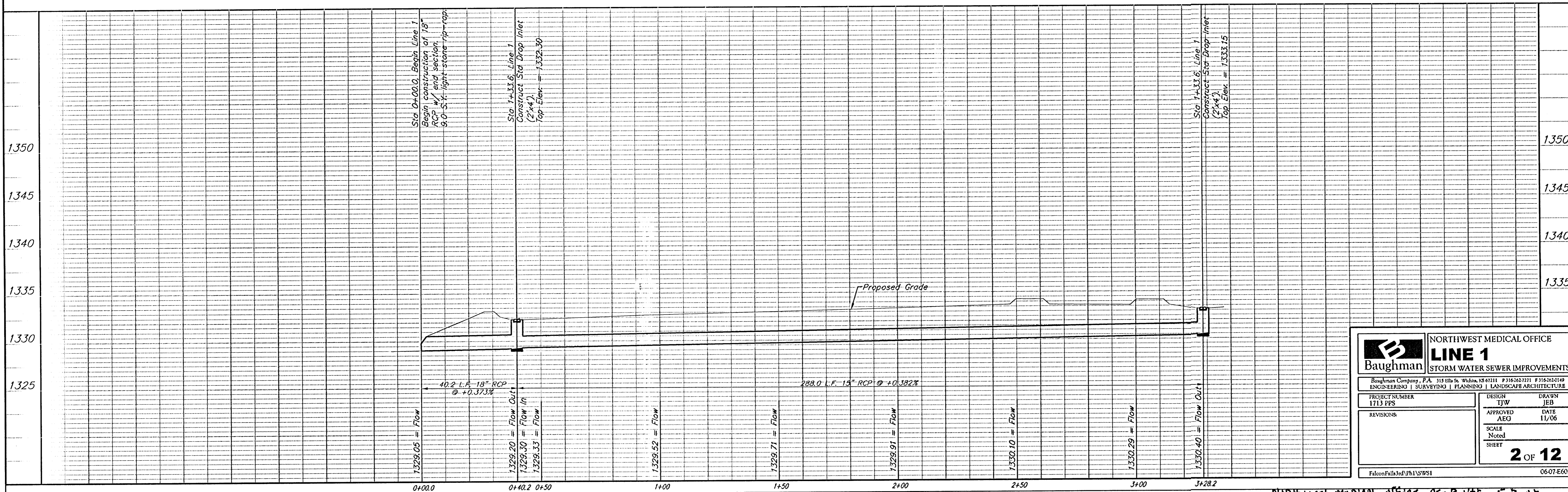
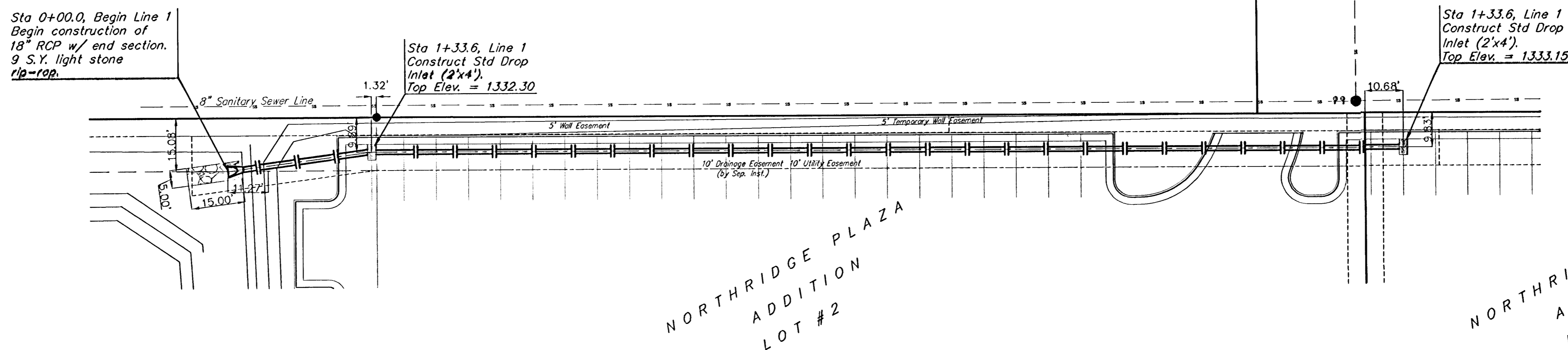


**BENCHMARK:**  
 Railroad Spike in East Face of  
 Power Pole, East of the NE Corner  
 of Lot 3, Northridge Plaza Addition  
 on East Side of Ridge Road  
 Elev. = 1335.05 M.S.L.

Scale: 1" = 20' Horizontal  
 1" = 5' Vertical  
 ● = Iron



|   |                 |   |                           |
|---|-----------------|---|---------------------------|
|   |                 | <b>NORTHWEST MEDICAL OFFICE</b><br><b>LINE 1</b><br><b>STORM WATER SEWER IMPROVEMENTS</b> |                           |
| <small>Baughman Company, P.A. 315 Hills St. Wilkes, KS 67111 P 316-262-2211 F 316-262-0149<br/>       ENGINEERING   SURVEYING   PLANNING   LANDSCAPE ARCHITECTURE</small> |                 |   |                           |
| PROJECT NUMBER<br>1713 PPS  | DESIGN<br>TJW   | DRAWN<br>JEB  | DATE<br>11/06             |
| REVISIONS:  | APPROVED<br>AEG | SCALE<br>Noted  | SHEET<br><b>2 OF 12</b>   |
| <small>Falcon Falls 3rd Ph1 SWS1</small>  |                 |   | <small>06-07-E602</small> |

Northwest Medical Office AS-BUILT 3-7-07  
 TH/CEd