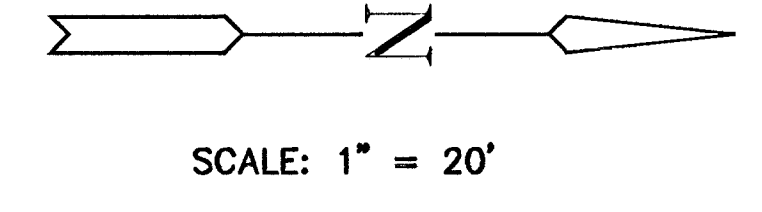


NOTE:
ALL AREAS DISTURBED, BEYOND AREA COVERED BY EROSION MAT, SHALL BE FERTILIZED, SEEDED AND MULCHED.

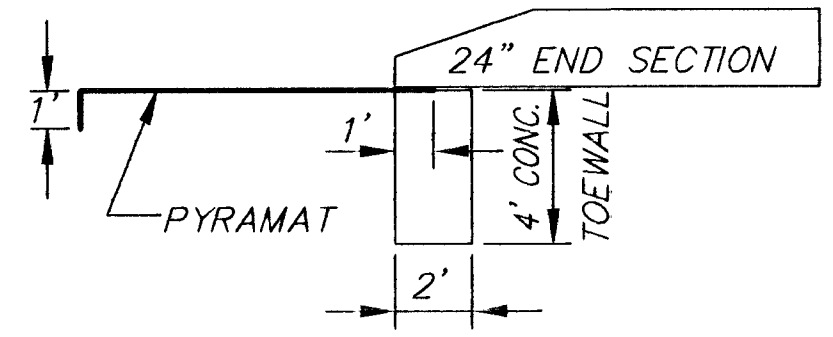
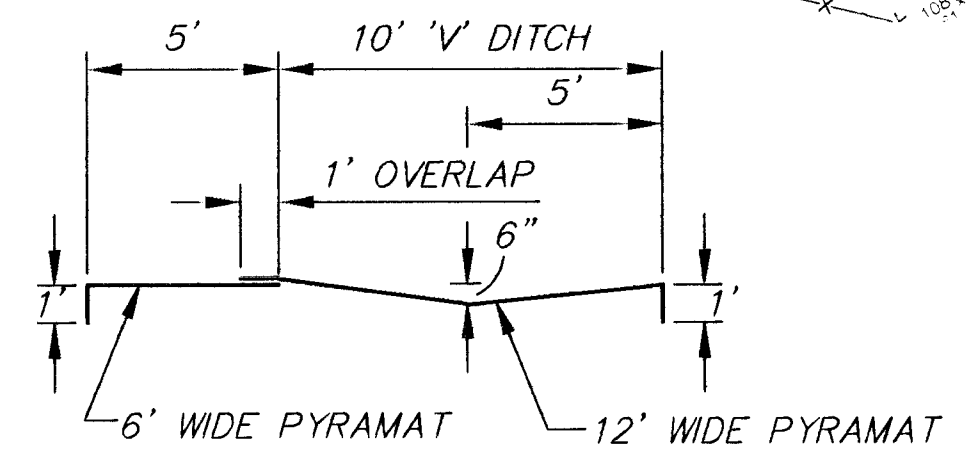
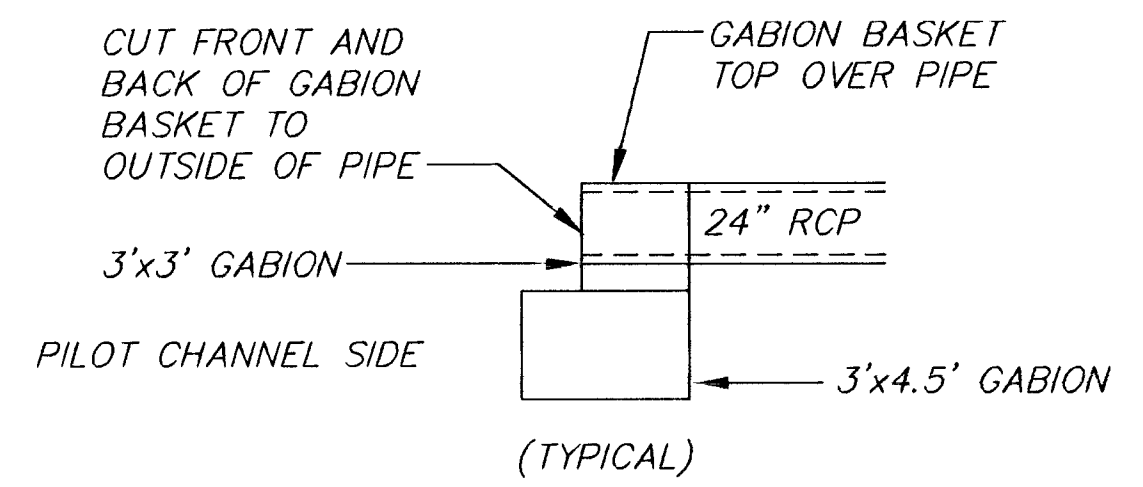


REMOVE 48 L.F. EXIST. 24" PIPE AND WINGWALLS FROM OUTLET TO M.H. AND INSTALL 34 L.F. OF 24" RCP. FL. OUTLET = 94.09. FL. MANHOLE = 96.35. END OF PIPE FLUSH WITH TOP ROW GABION FACE; TOP OF PIPE FLUSH WITH TOP OF GABION (SEE DETAIL BELOW)

TOP OF MATTRESSES IN PILOT CHANNEL TO MATCH TOP OF EXIST. CONC. LINED CHANNEL BOTTOM

15' WIDE x 40' LONG OUTFALL PROTECTION. USE 'PYRAMAT' EROSION CONTROL MATRIX OVER 'V' DITCH, 10' WIDE x 6" DEEP (SEE DETAIL BELOW)

REMOVE EXIST. 24" PIPE & WINGWALLS FROM OUTLET TO MANHOLE AND REPLACE W/48 L.F. OF 24" RCP W/END SECTION AT ~ 5.3% SLOPE. FL. OUTLET = 93.51. FL. MANHOLE ~ 96.80 (END OF END SECTION SHALL BE AT BEGINNING OF 3:1 SIDE SLOPE). CONST. CONCRETE TOEWALL: W=2', D=4', L=8'. PLACE EROSION MAT BETWEEN TOEWALL AND END SECTION (SEE DETAIL @ SIDE)



AREA "K" PART 2 - PHASE 1
PROJECT NAME

WICHITA DRAINAGE CANAL PLAN
SHEET TITLE

JWJ DESIGN BY.	MLW DRAWN BY.	JWJ CHECKED BY.
MAY 1999 DATE	94011 JOB NO.	3 / 64 SHEET/OF

G:\CIVIL\AREA_K\94011\PLANS\94011D1.DWG Tue May 25 08:34:37 1999

G:\CIVIL\AREA_K\94011\PLANS\94011D1.DWG 5-23-99 8:34:29 am CDST