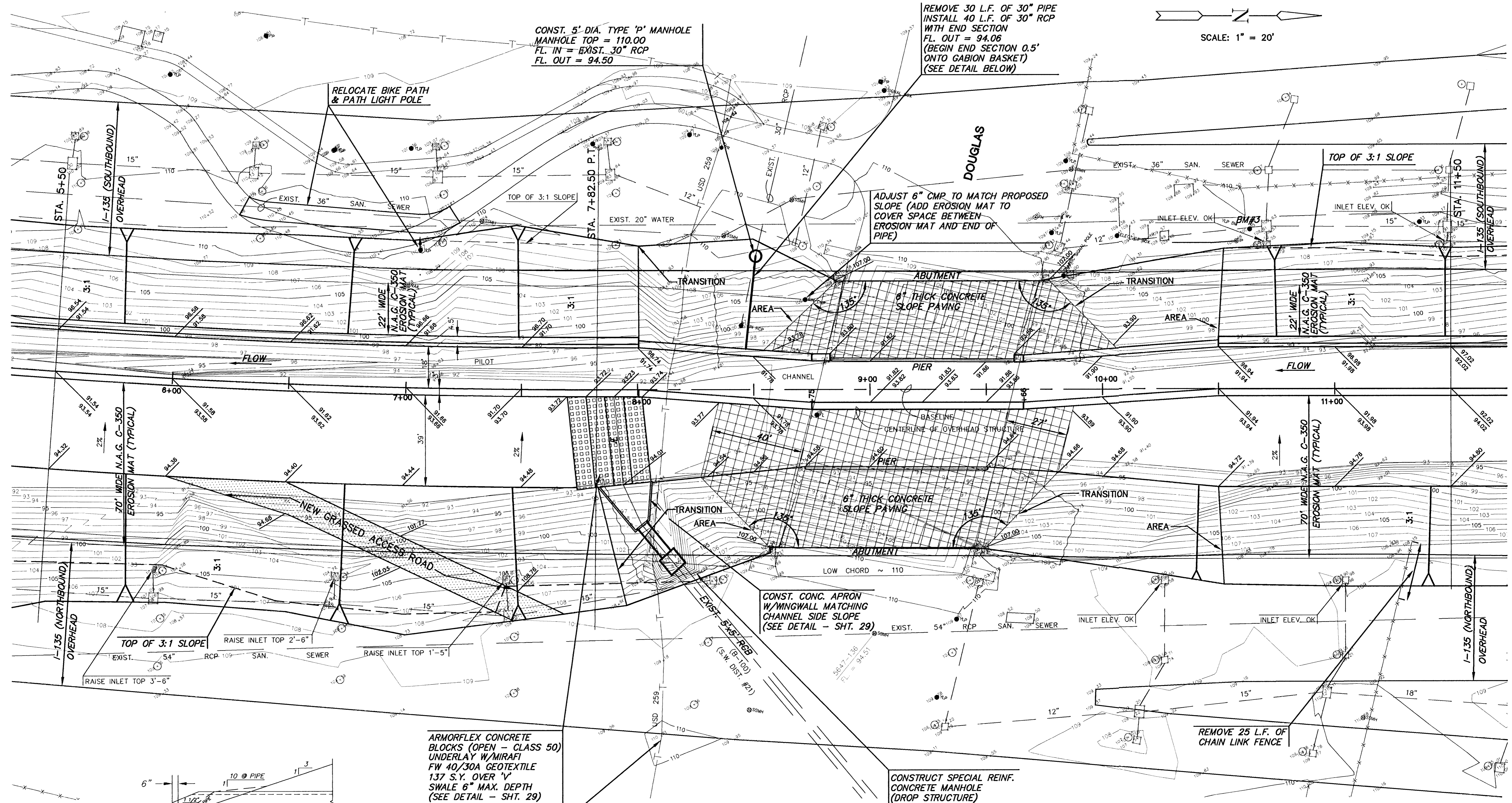


SCALE: 1" = 20'



CONST. 5' DIA. TYPE 'P' MANHOLE  
MANHOLE TOP = 110.00  
FL. IN = EXIST. 30" RCP  
FL. OUT = 94.50

REMOVE 30 L.F. OF 30" PIPE  
INSTALL 40 L.F. OF 30" RCP  
WITH END SECTION  
FL. OUT = 94.06  
(BEGIN END SECTION 0.5'  
ONTO GABION BASKET)  
(SEE DETAIL BELOW)

ADJUST 6" CMPR TO MATCH PROPOSED  
SLOPE (ADD EROSION MAT TO  
COVER SPACE BETWEEN  
EROSION MAT AND END OF  
PIPE)

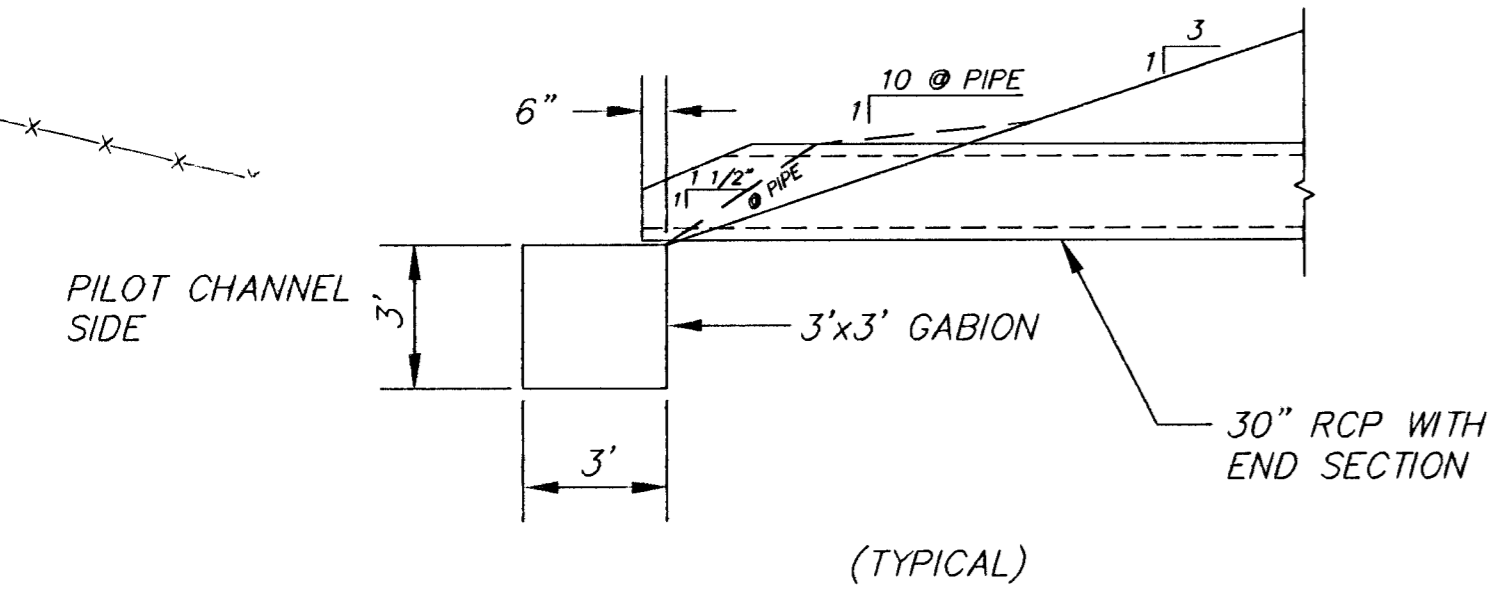
CONST. CONC. APRON  
W/WINGWALL MATCHING  
CHANNEL SIDE SLOPE  
(SEE DETAIL - SHT. 29)

CONSTRUCT SPECIAL REINF.  
CONCRETE MANHOLE  
(DROP STRUCTURE)  
W=8'-0", L=8'-0"  
SQUARE-OFF END OF EXIST.  
5'x5' RCB. M/H TOP =  
PROP. GRADING  
FL. IN = 96.74  
FL. OUT = 94.80  
INSTALL 18 L.F. 5'x5' RCB  
(PRECAST, C-789) @ 0.10%  
FL. OUT = 94.78  
W/CONCRETE TOEWALL  
W=2', D=4', L=12'

ARMORFLEX CONCRETE  
BLOCKS (OPEN - CLASS 50)  
UNDERLAY W/MIRAFI  
FW 40/30A GEOTEXTILE  
137 S.Y. OVER 'V'  
SWALE 6" MAX. DEPTH  
(SEE DETAIL - SHT. 29)

CAUTION!!!  
WICHITA PUBLIC SCHOOLS  
COMMUNICATIONS  
833-2000

NOTE:  
ALL AREAS DISTURBED, BEYOND AREA COVERED  
BY EROSION MAT, SHALL BE FERTILIZED, SEEDED  
AND MULCHED.



MID-KANSAS ENGINEERING  
CONSULTANTS, INC.  
411 N. WEBB ROAD  
WICHITA, KS. 67206  
316-684-9600

**AREA "K" PART 2 - PHASE 1**  
PROJECT NAME

**WICHITA DRAINAGE CANAL PLAN**  
SHEET TITLE

JNJ DESIGN BY.	MLW DRAWN BY.	JNJ CHECKED BY.
MAY 1999 DATE	94011 JOB NO.	5 / 64 SHEET/OF

6: \CIVIL\AREA\_K\94011\PLANS\94011DR.DWG 5-25-99 8:35:12 am CDST