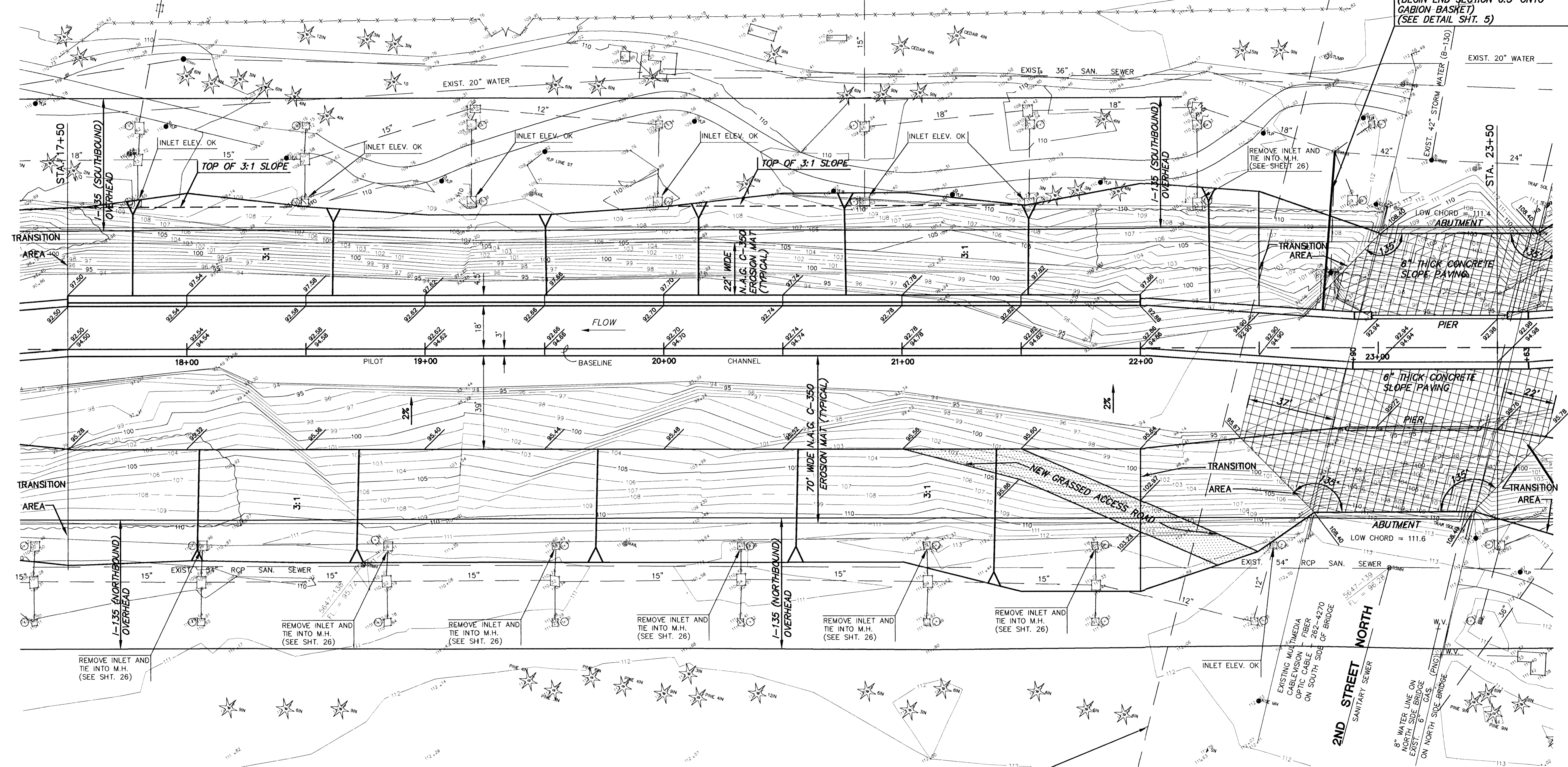


SCALE: 1" = 20'

REMOVE 50 L.F. OF EXIST. 42" PIPE FROM OUTLET TO MANHOLE AND INSTALL 67 L.F. OF 42" RCP WITH END SECTION @ 1.93% SLOPE FL. OUTLET = 95.28 FL. MANHOLE = 96.57 (BEGIN END SECTION 0.5' ONTO GABION BASKET) (SEE DETAIL SHT. 5)



REMOVE INLET AND TIE INTO M.H. (SEE SHT. 26)

REMOVE INLET AND TIE INTO M.H. (SEE SHT. 26)

REMOVE INLET AND TIE INTO M.H. (SEE SHT. 26)

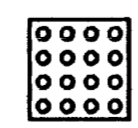
REMOVE INLET AND TIE INTO M.H. (SEE SHT. 26)

REMOVE INLET AND TIE INTO M.H. (SEE SHT. 26)

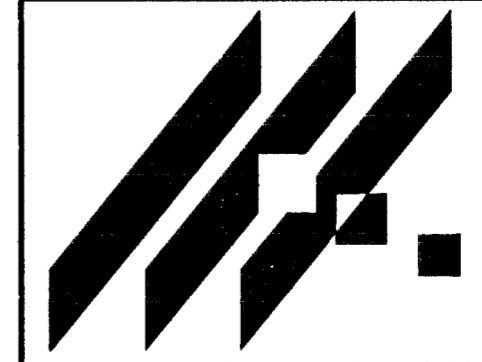
REMOVE INLET AND TIE INTO M.H. (SEE SHT. 26)

NOTE:
ALL AREAS DISTURBED, BEYOND AREA COVERED BY EROSION MAT, SHALL BE FERTILIZED, SEEDED AND MULCHED.

CAUTION!!!
SOUTHWESTERN BELL TELEPHONE FIBER OPTICS 4x4 CONDUIT IN CONCRETE.



1-800-344-7233
CONTRACTOR SHALL VERIFY LOCATION AND DEPTH BY PROBING DURING CONSTRUCTION. IF CONFLICT DEVELOPS, CONTRACTOR SHALL CONTACT S.W.B., IMMEDIATELY.



MID-KANSAS ENGINEERING CONSULTANTS, INC.
411 N. WEBB ROAD
WICHITA, KS. 67206
316-684-9600

AREA "K" PART 2 - PHASE 1
PROJECT NAME

WICHITA DRAINAGE CANAL PLAN
SHEET TITLE

JNJ DESIGN BY:	MLW DRAWN BY:	JNJ CHECKED BY:
MAY 1999 DATE	94011 JOB NO.	8 / 64 SHEET/OF

6: \CVT\1\AREA_K\94011\PLANS\94011D4.DWG 5-23-99 8:36:43 am CDST