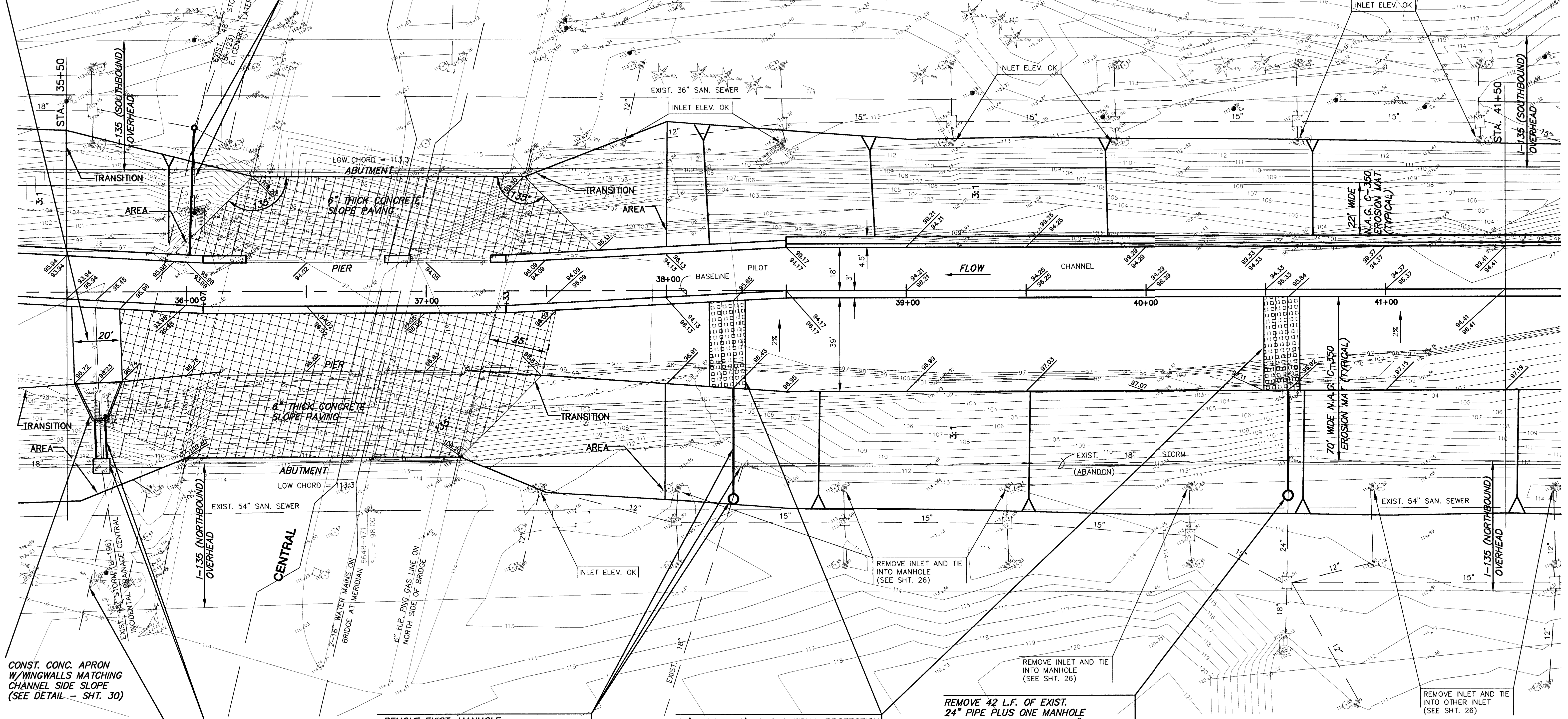


SCALE: 1" = 20'

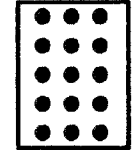
20' WIDE x 6" DEEP 'V' CONCRETE SWALE

REMOVE 34 L.F. OF EXIST. 48" RCP FROM MANHOLE TO OUTLET AND INSTALL 54 L.F. OF 38"x60" HERCP WITH END SECTION (CONTRACTOR SHALL VERIFY FIT)  
 FL. OUTLET = 96.44 (PIPE ON TOP OF GABION. END SECTION 0.5' ONTO GABION.) (SEE DTL. - SHT. 5)  
 FL. MANHOLE = EXIST. (~96.56)



CONST. CONC. APRON W/WINGWALLS MATCHING CHANNEL SIDE SLOPE (SEE DETAIL - SHT. 30)

**CAUTION!!!**  
 SOUTHWESTERN BELL TELEPHONE 3x5 CONDUIT IN CONCRETE



CONTRACTOR SHALL VERIFY LOCATION AND DEPTH BY PROBING DURING CONSTRUCTION. IF CONFLICT DEVELOPS, CONTRACTOR SHALL CONTACT S.W.B., IMMEDIATELY.

REMOVE 16 L.F. OF EXIST. 48" PIPE AND EXISTING MANHOLE  
 INSTALL 16 L.F. OF 48" RCP  
 FL. OUT = 96.53  
 AND REINF. SPEC. CONC. M.H.  
 W=6'-0", L=7'-0"  
 MANHOLE TOP = 108.9  
 FL. OUT M.H. = 96.56 (48" W.)  
 FL. IN = 103.61 (48" E.)  
 FL. IN = 101.46 (18" S.)  
 FL. IN = 106.6 (12" N.)  
 (ADJUST PIPE)

REMOVE EXIST. MANHOLE  
 CONST. TYPE 'P' MANHOLE (4') ON TOP OF EXIST. 18" STORM SEWER.  
 INSTALL 46 L.F. OF 18" RCP @ 0.32% W/END SECTION & CONCRETE TOEWALL  
 W=2', D=4', L=6'  
 FL. OUT (18") = 96.43  
 FL. OUT (M.H.) = 96.58  
 FL. IN (M.H.) = EXIST 18"  
 M.H. TOP = 112.5  
 (END OF END SECTION SHALL BE AT BEGINNING OF 3:1 SIDE SLOPE).  
 PLACE EROSION MAT BETWEEN TOEWALL AND END SECTION (SEE DETAIL - SHT. 3).

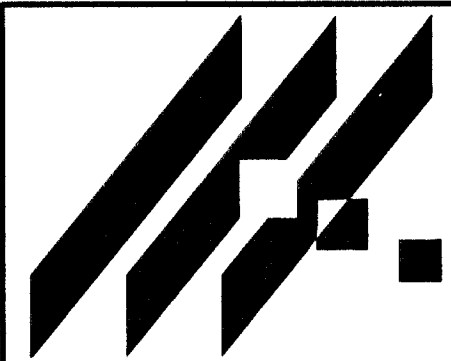
15' WIDE x 40' LONG OUTFALL PROTECTION. USE 'PYRAMAT' EROSION CONTROL MATRIX OVER 6" DEEP 'V' DITCH, 10' WIDE. (SEE DETAIL - SHT. 3).

NOTE:  
 ALL AREAS DISTURBED, BEYOND AREA COVERED BY EROSION MAT, SHALL BE FERTILIZED, SEEDED AND MULCHED.

REMOVE 42 L.F. OF EXIST. 24" PIPE PLUS ONE MANHOLE AND INSTALL 44 L.F. OF 24" RCP PLUS NEW MANHOLE TYPE 'P' (5')  
 FL. OUT (24") = 96.62  
 WITH CONCRETE TOEWALL  
 W=2', D=4', L=8'  
 FL. OUT (M.H.) = 97.50  
 FL. IN (M.H.) = EXIST. 24" (~105.0)  
 M.H. TOP = 112.00  
 (END OF END SECTION SHALL BE AT BEGINNING OF 3:1 SIDE SLOPE.)  
 PLACE EROSION MAT BETWEEN TOEWALL AND END SECTION (SEE DETAIL - SHT. 3).

**AREA 'K' PART 2 - PHASE 1**

PROJECT NAME  
**WICHITA DRAINAGE CANAL PLAN**  
 SHEET TITLE



MID-KANSAS ENGINEERING CONSULTANTS, INC.  
 411 N. WEBB ROAD  
 WICHITA, KS. 67206  
 316-684-9600

|                   |                  |                     |
|-------------------|------------------|---------------------|
| JNJ<br>DESIGN BY. | MLW<br>DRAWN BY. | JNJ<br>CHECKED BY.  |
| MAY 1999<br>DATE  | 94011<br>JOB NO. | 12 / 64<br>SHEET OF |