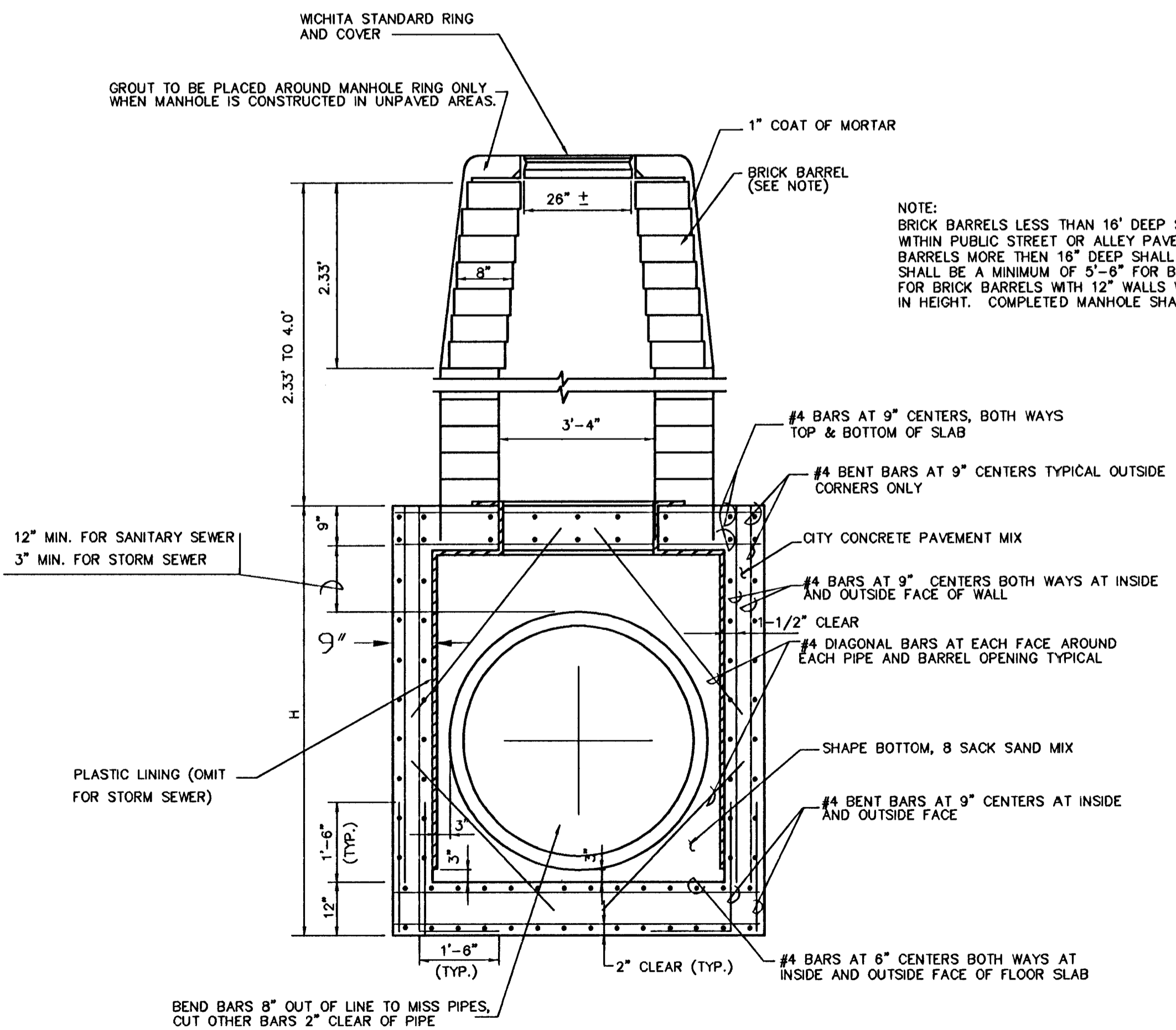


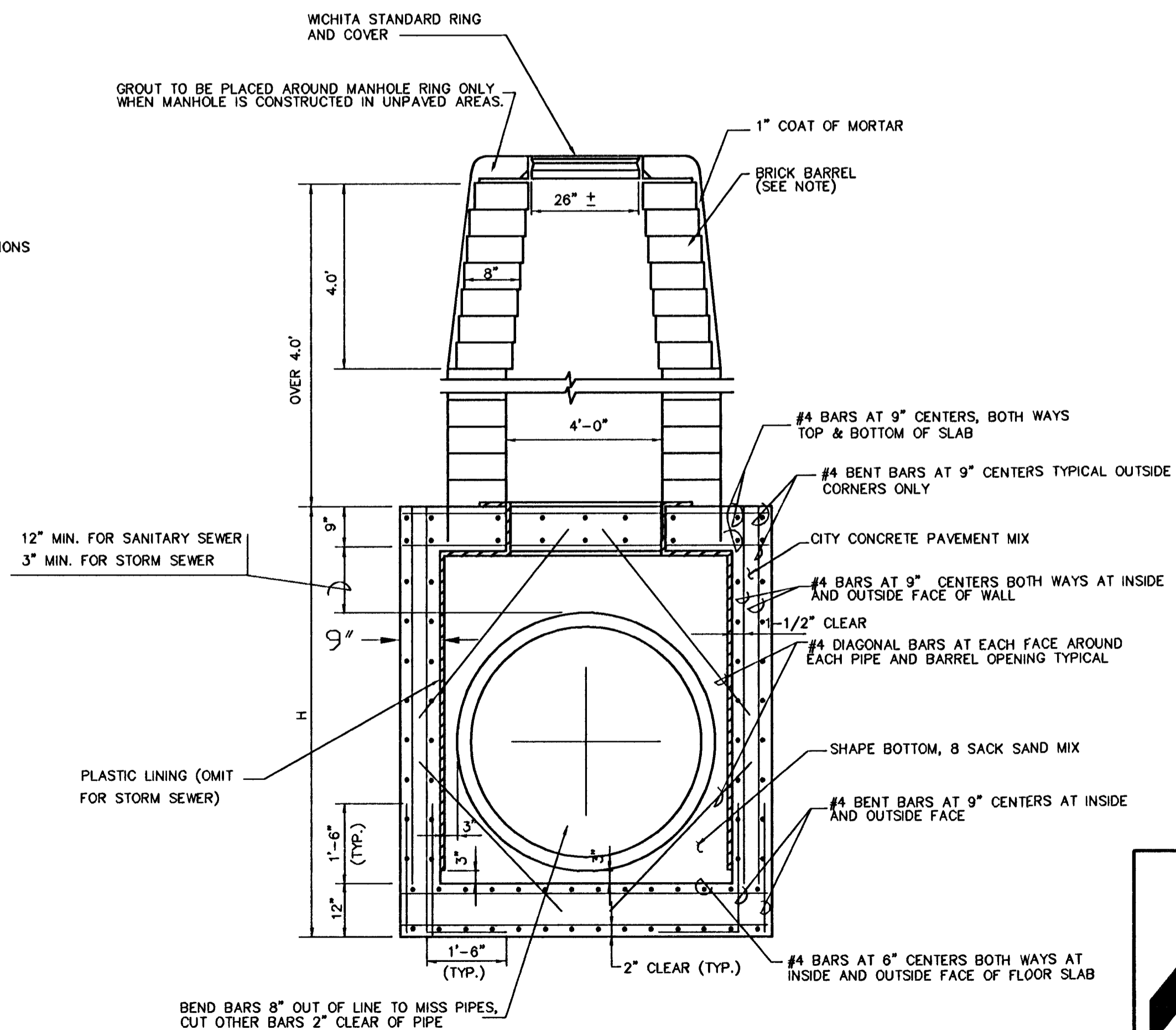
**REINFORCED CONCRETE MANHOLE**

DEPTH OF STACK: 0' TO 2.33'



**REINFORCED CONCRETE MANHOLE**

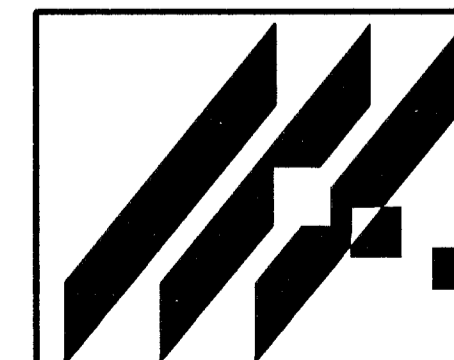
DEPTH OF STACK: 2.33' TO 4.0'



**REINFORCED CONCRETE MANHOLE**

DEPTH OF STACK: OVER 4.0'

NOTE:  
BRICK BARRELS LESS THAN 16' DEEP SHALL HAVE 1" WALLS EXCEPT WHEN LOCATED WITHIN PUBLIC STREET OR ALLEY PAVEMENT THEN THE WALL SHALL BE 12" BRICK BARRELS MORE THEN 16' DEEP SHALL HAVE 12" WALLS. THE "L" AND "W" DIMENSIONS SHALL BE A MINIMUM OF 5'-6" FOR BRICK BARRELS WITH 8" WALLS AND 6'-2" FOR BRICK BARRELS WITH 12" WALLS WHEN THE BRICK BARRELS ARE OVER 4 FEET IN HEIGHT. COMPLETED MANHOLE SHALL BE WITHOUT LEAKS AND WATERTIGHT.



MID-KANSAS ENGINEERING  
CONSULTANTS, INC.  
411 N. WEBB ROAD  
WICHITA, KS. 67206  
316-684-9600

**AREA "K" PART 2 - PHASE 1**  
PROJECT NAME

**REINFORCED CONCRETE MANHOLES**  
SHEET TITLE

JNJ DESIGN BY:	MLW DRAWN BY:	JNJ CHECKED BY:
OCTOBER 1998 DATE	94011 JOB NO.	24 OF 64 SHEET/OF