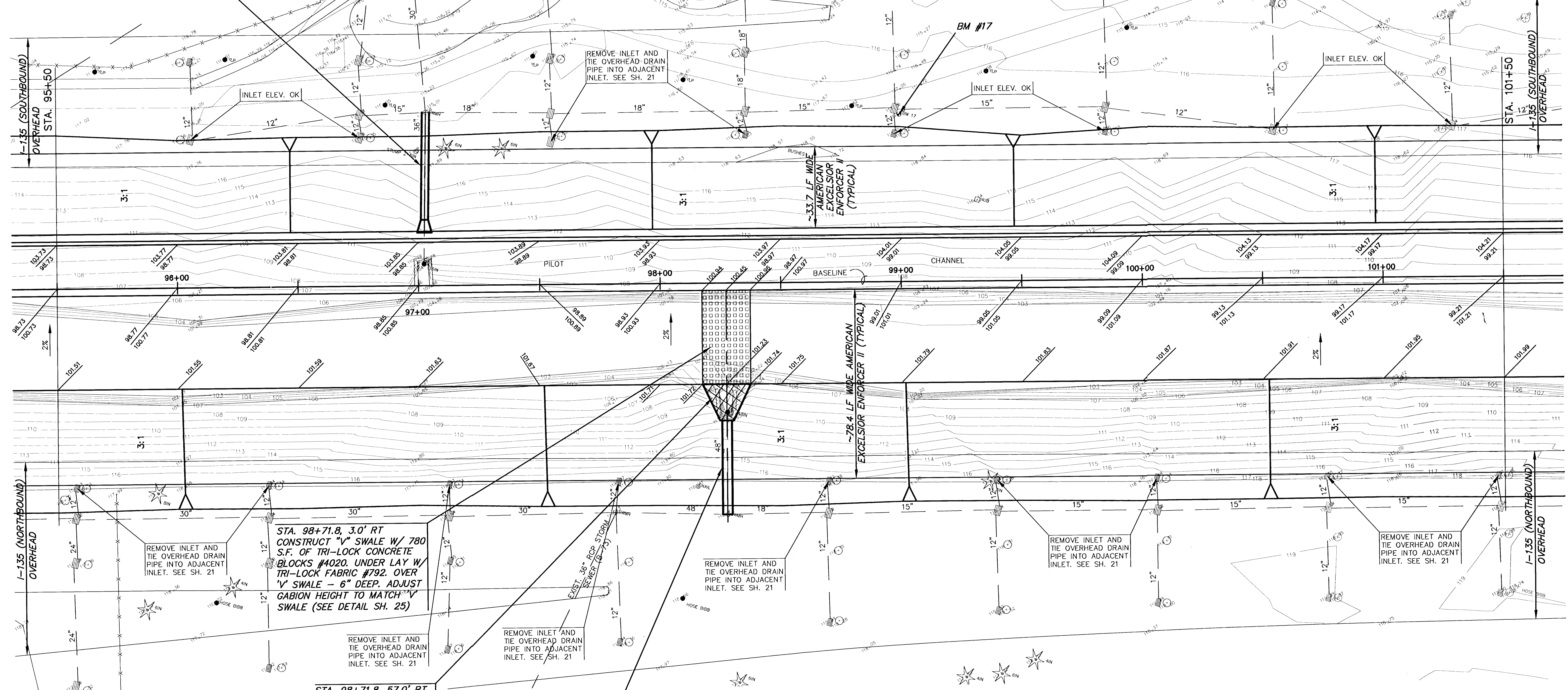


STA. 97+03.4, 71.8' LT
 REMOVE 62 LF OF EXIST 36" PIPE AND
 WINGWALL FROM OUTLET TO MANHOLE.
 INSTALL 50 LF OF 36" RCP W/ END SECTION.
 (BEGIN END SECTION 0.5' ONTO GABION
 BASKET (SEE DETAIL - SHEET 8)).
 FL OUT=104.18
 EXIST. MANHOLE TOP=115.58
 FL IN=106.48 (30"-W)
 FL IN=107.48 (18"-N)
 FL IN= (15"-S)
 FL OUT=105.48 (36"-E)

SCALE: 1" = 20'



STA. 98+71.8, 3.0' RT
 CONSTRUCT "V" SWALE W/ 780
 S.F. OF TRI-LOCK CONCRETE
 BLOCKS #4020. UNDER LAY W/
 TRI-LOCK FABRIC #792. OVER
 "V" SWALE - 6" DEEP. ADJUST
 GABION HEIGHT TO MATCH "V"
 SWALE (SEE DETAIL SH. 25)

STA. 98+71.8, 95.9' RT
 REMOVE 41 LF OF EXIST. 48" PIPE AND
 WINGWALLS FROM OUTLET TO MANHOLE.
 INSTALL 39 LF OF 48" RCP.
 FL OUT=101.53
 EXIST. MANHOLE TOP=118.87
 FL IN=106.87 (18"-N)
 FL IN=104.37 (48"-S)
 FL OUT=103.27 (48"-W)



AREA "K" PART 2 - PHASE 2
WICHITA DRAINAGE CANAL
 PROJECT NAME

WICHITA DRAINAGE CANAL PLAN
 SHEET TITLE

JNJ DESIGN BY:	RSB DRAWN BY:	TKM CHECKED BY:
JAN. 2001 DATE	94011 JOB NO.	11 / 47 SHEET / OF

G:\CIVIL\AREA_K\94011\PP\PLANS\94011d17.dwg Mon Jun 04 14:04:09 2001