

SCALE: 1" = 20'

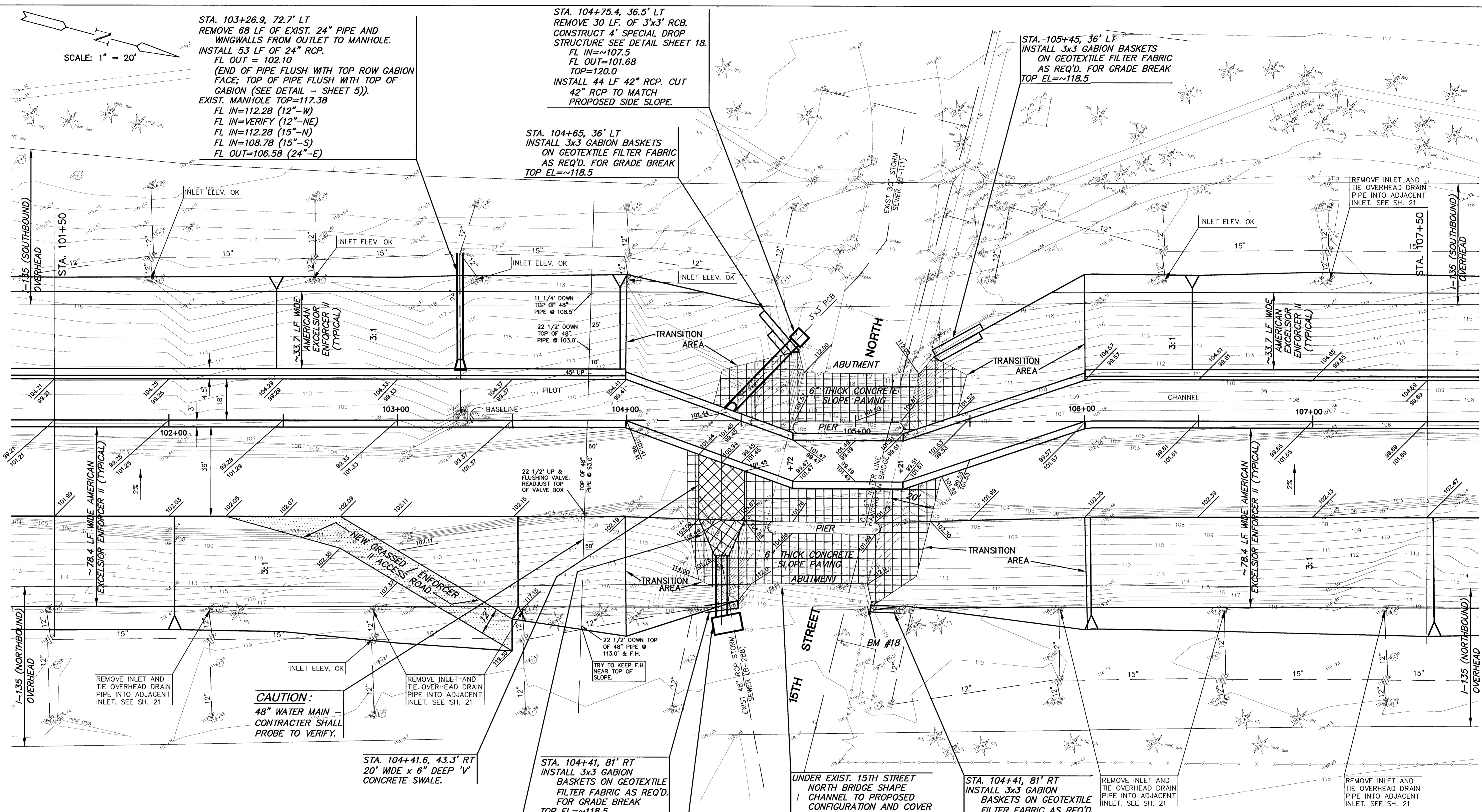
STA. 103+26.9, 72.7' LT  
REMOVE 68 LF OF EXIST. 24" PIPE AND WINGWALLS FROM OUTLET TO MANHOLE.  
INSTALL 53 LF OF 24" RCP.  
FL OUT = 102.10  
(END OF PIPE FLUSH WITH TOP ROW GABION FACE; TOP OF PIPE FLUSH WITH TOP OF GABION (SEE DETAIL - SHEET 5)).  
EXIST. MANHOLE TOP=117.38  
FL IN=112.28 (12"-W)  
FL IN=VERIFY (12"-NE)  
FL IN=112.28 (15"-N)  
FL IN=108.78 (15"-S)  
FL OUT=106.58 (24"-E)

STA. 104+75.4, 36.5' LT  
REMOVE 30 LF. OF 3'x3' RCB.  
CONSTRUCT 4' SPECIAL DROP STRUCTURE SEE DETAIL SHEET 18.  
FL IN=107.5  
FL OUT=101.68  
TOP=120.0  
INSTALL 44 LF 42" RCP. CUT 42" RCP TO MATCH PROPOSED SIDE SLOPE.

STA. 104+65, 36' LT  
INSTALL 3x3 GABION BASKETS ON GEOTEXTILE FILTER FABRIC AS REQ'D. FOR GRADE BREAK  
TOP EL=118.5

STA. 105+45, 36' LT  
INSTALL 3x3 GABION BASKETS ON GEOTEXTILE FILTER FABRIC AS REQ'D. FOR GRADE BREAK  
TOP EL=118.5

REMOVE INLET AND TIE OVERHEAD DRAIN PIPE INTO ADJACENT INLET. SEE SH. 21



REMOVE INLET AND TIE OVERHEAD DRAIN PIPE INTO ADJACENT INLET. SEE SH. 21

**CAUTION:**  
48" WATER MAIN - CONTRACTOR SHALL PROBE TO VERIFY.

STA. 104+41.6, 43.3' RT  
20' WIDE x 6" DEEP 'V' CONCRETE SWALE.

STA. 104+41, 81' RT  
INSTALL 3x3 GABION BASKETS ON GEOTEXTILE FILTER FABRIC AS REQ'D. FOR GRADE BREAK  
TOP EL=118.5  
BOTTOM EL=115.5

STA. 104+44.1, 88.7' RT  
REMOVE 28 LF. OF 48" RCP.  
CONSTRUCT 6'x11' SPECIAL DROP STRUCTURE. SEE DETAIL SHEET 18.  
TOP=118.5  
FL IN=104.7  
FL OUT=102.1  
INSTALL 31 LF 48" RCP  
FL AT HEADWALL=101.75

UNDER EXIST. 15TH STREET NORTH BRIDGE SHAPE CHANNEL TO PROPOSED CONFIGURATION AND COVER AREA SHOWN WITH 6" CONCRETE PAVING. TOP OF CONCRETE PAVING TO BE FINAL IMPROVEMENT SURFACE.

STA. 104+41, 81' RT  
INSTALL 3x3 GABION BASKETS ON GEOTEXTILE FILTER FABRIC AS REQ'D. FOR GRADE BREAK  
TOP EL=118.5  
BOTTOM EL=115.5

REMOVE INLET AND TIE OVERHEAD DRAIN PIPE INTO ADJACENT INLET. SEE SH. 21

REMOVE INLET AND TIE OVERHEAD DRAIN PIPE INTO ADJACENT INLET. SEE SH. 21

**NOTE:**  
IN WINTER A 1" B.O. IS LEFT OPEN ON BRIDGE TO AVOID FREEZING THE 6" MAIN.  
**CONTRACTOR MAY CLOSE TEMPORARILY WHEN WORKING UNDER BRIDGE, BUT MUST RE-OPEN IF FREEZING WEATHER.**



**AREA "K" PART 2 - PHASE 2  
WICHITA DRAINAGE CANAL**  
PROJECT NAME

**WICHITA DRAINAGE CANAL PLAN**  
SHEET TITLE

JNJ DESIGN BY.	RSB DRAWN BY.	TKM CHECKED BY.
JAN. 2001 DATE	94011 JOB NO.	13 / 47 SHEET / OF

G:\CIVIL\AREA\_K\94011\PLANS\94011018.dwg Mon Jun 04 14:04:37 2001

G:\CIVIL\AREA\_K\94011\PLANS\94011018.dwg 05/11/2001 04:07:30 PM CST