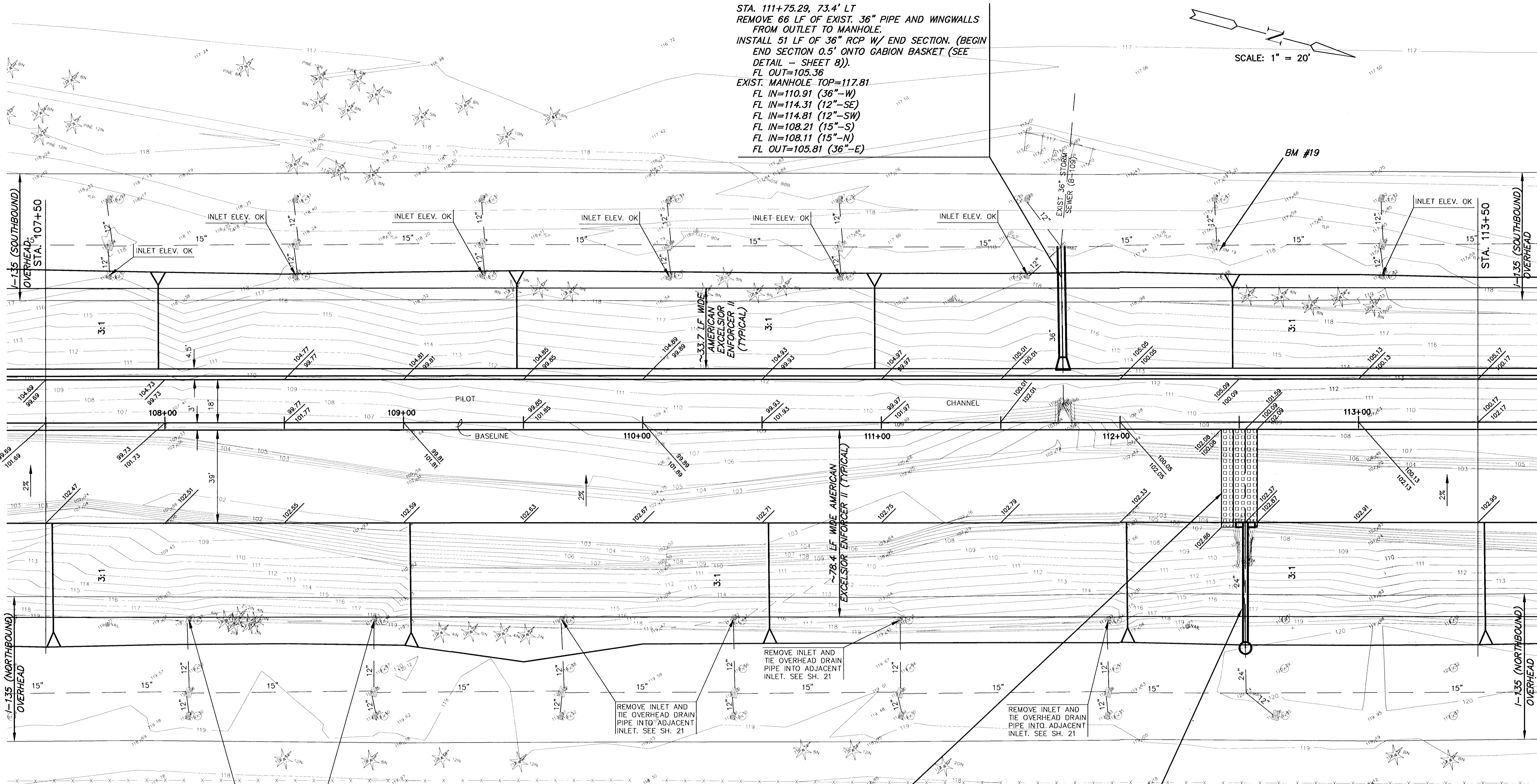
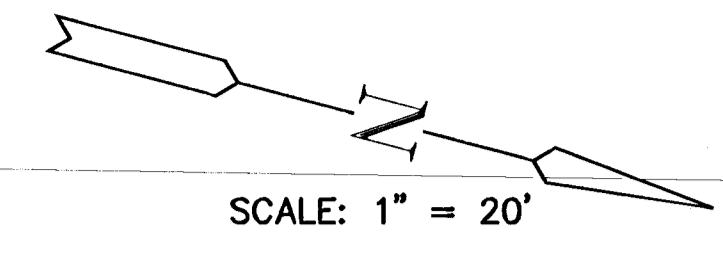


STA. 111+75.29, 73.4' LT
 REMOVE 66 LF OF EXIST. 36" PIPE AND WINGWALLS FROM OUTLET TO MANHOLE.
 INSTALL 51 LF OF 36" RCP W/ END SECTION (BEGIN END SECTION 0.5' ONTO GABION BASKET (SEE DETAIL - SHEET 8)).
 FL OUT=105.36
 EXIST. MANHOLE TOP=117.81
 FL IN=110.91 (36"-W)
 FL IN=114.31 (12"-SE)
 FL IN=114.81 (12"-SW)
 FL IN=108.21 (15"-S)
 FL IN=108.11 (15"-N)
 FL OUT=105.81 (36"-E)

SCALE: 1" = 20'



REMOVE INLET AND TIE OVERHEAD DRAIN PIPE INTO ADJACENT INLET. SEE SH. 21

REMOVE INLET AND TIE OVERHEAD DRAIN PIPE INTO ADJACENT INLET. SEE SH. 21

REMOVE INLET AND TIE OVERHEAD DRAIN PIPE INTO ADJACENT INLET. SEE SH. 21

REMOVE INLET AND TIE OVERHEAD DRAIN PIPE INTO ADJACENT INLET. SEE SH. 21

STA. 112+52.6, 3.0' RT
 INSTALL 15' WIDE x 40' LONG OUTFALL PROTECTION.
 USE 'PYRAMAT' EROSION CONTROL MATRIX OVER 'V' DITCH, 10' WIDE x 6" DEEP. (SEE DETAIL - SHEET 5).

STA. 112+52.6, 42.0' RT
 REMOVE 36 LF OF EXIST. 24" PIPE AND WINGWALLS FROM OUTLET TO PROPOSED MANHOLE.
 INSTALL 53 LF OF 24" RCP W/ END SECTION FL OUT=102.37
 (END OF END SECTION SHALL BE AT BEGINNING OF 3:1 SIDE SLOPE). W/ CONC. TOEWALL W=2', D=4', L=8'
 (PLACE EROSION MAT BETWEEN TOEWALL AND END SECTION (SEE DETAIL-SHEET 5)).
 INSTALL TYPE 'P' MANHOLE (DIA.=5')
 TOP OF MANHOLE=120.25 (24"-E)
 FL IN=105.7 (24"-E)
 FL IN=103.0 (24"-W)



AREA "K" PART 2 - PHASE 2
WICHITA DRAINAGE CANAL
 PROJECT NAME

WICHITA DRAINAGE CANAL PLAN
 SHEET TITLE

JNJ DESIGN BY:	RSB DRAWN BY:	TKM CHECKED BY:
JAN. 2001 DATE	94011 JOB NO.	14 / 47 SHEET / OF