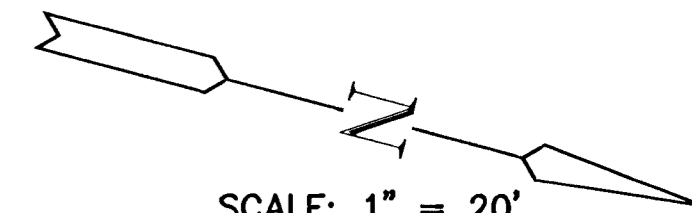
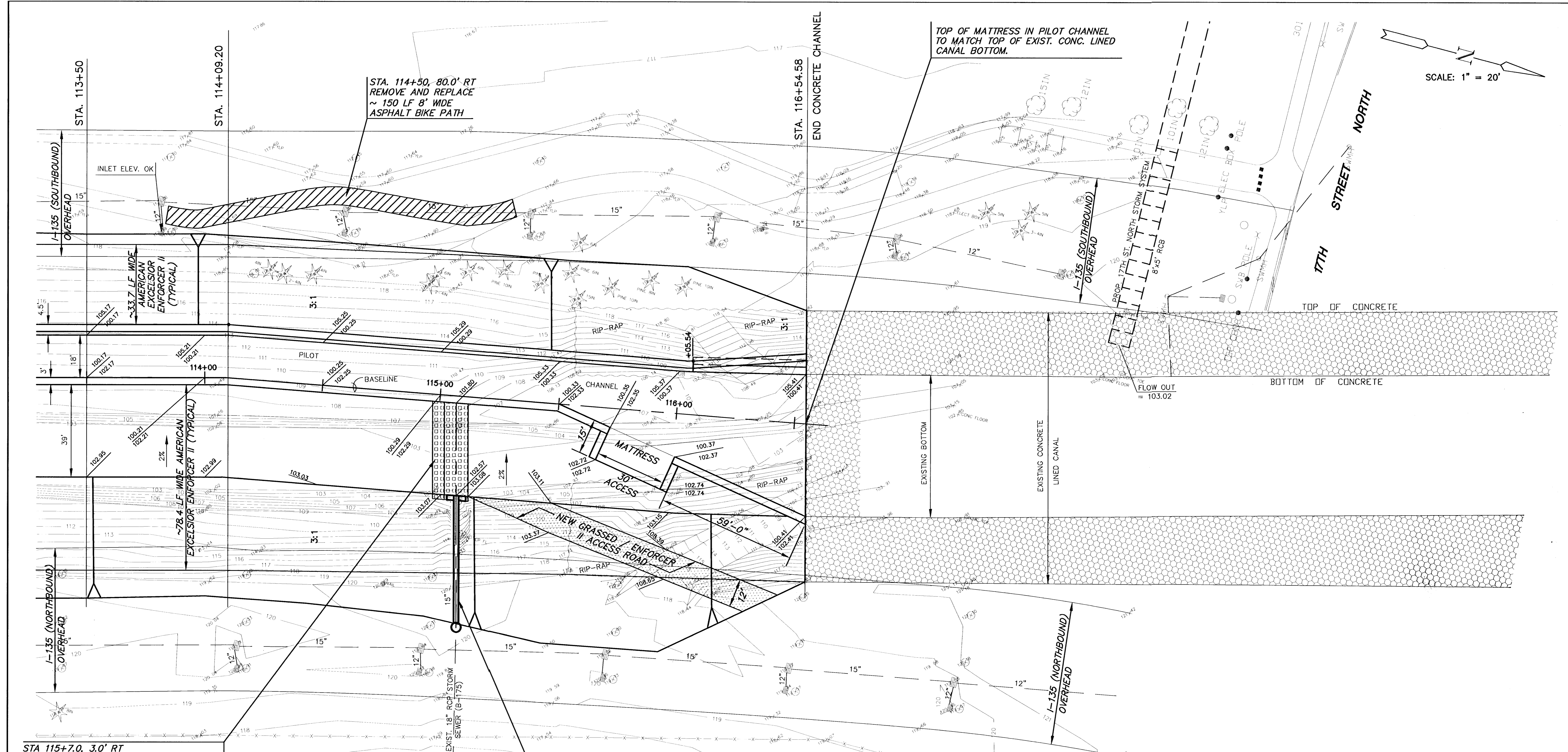


SCALE: 1" = 20'



TOP OF MATTRESS IN PILOT CHANNEL TO MATCH TOP OF EXIST. CONC. LINED CANAL BOTTOM.



STA. 114+50, 80.0' RT
REMOVE AND REPLACE
~ 150 LF 8' WDE
ASPHALT BIKE PATH

STA 115+7.0, 3.0' RT
15' WIDE x 40' LONG OUTFALL PROTECTION.
USE 'PYRAMAT' EROSION CONTROL MATRIX
OVER 'V' DITCH, 10' WIDE x 6" DEEP.
(SEE DETAIL - SHEET 5).

STA. 115+10.1, 42.0' RT
REMOVE 38 LF OF EXIST. 18" PIPE FROM
OUTLET TO PROPOSED MANHOLE.
INSTALL 56 LF OF 18" RCP W/ END SECTION
FL OUT=102.57
(END OF END SECTION SHALL BE AT
BEGINNING OF 3:1 SIDE SLOPE). W/ CONC.
TOEWALL W=2',D=4',L=8' (PLACE EROSION
MAT BETWEEN TOEWALL AND END SECTION
(SEE DETAIL - SHEET 5)).
INSTALL TYPE 'P' MANHOLE (DIA=4') APPROX.
11' NORTH OF OVERHEAD COLUMN.
TOP OF MANHOLE=120.50
FL IN=111.70 (18"-E)
FL OUT=106.00 (18"-W)

BM-20
C.O.W. DISK ON HUBGUARD AT SOUTHEAST
CORNER OF 17TH STREET NORTH BRIDGE.
C.O.W. ELEV. = 124.44



AREA "K" PART 2 - PHASE 2
WICHITA DRAINAGE CANAL
PROJECT NAME

WICHITA DRAINAGE CANAL PLAN
SHEET TITLE

JNJ DESIGN BY:	RSB DRAWN BY:	TKM CHECKED BY:
JAN. 2001 DATE	94011 JOB NO.	16 / 47 SHEET / OF

G:\CIVIL\AREA_K\94011\2\PLANS\94011a20.dwg Mon Jun 04 14:05:19 2001