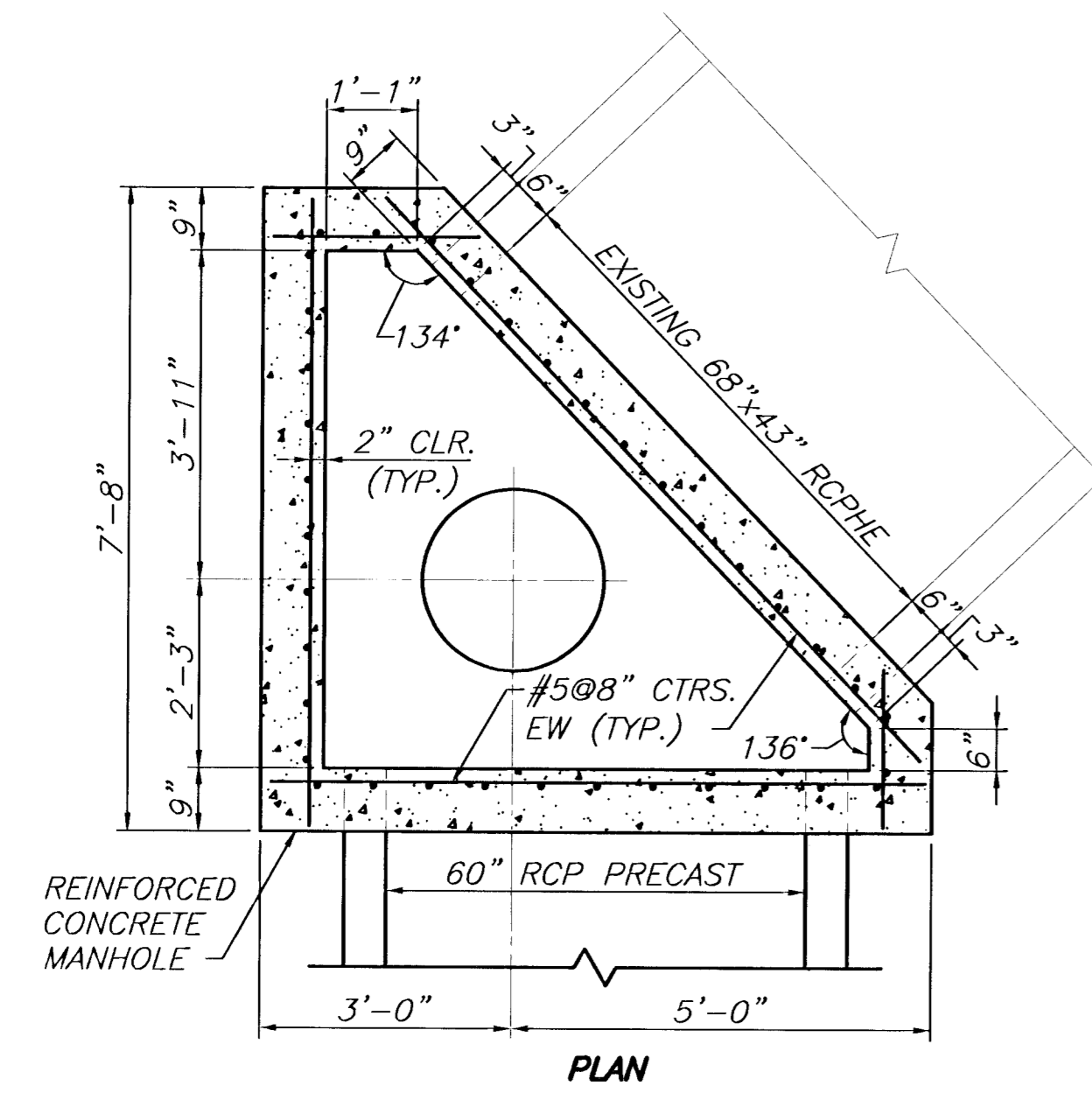
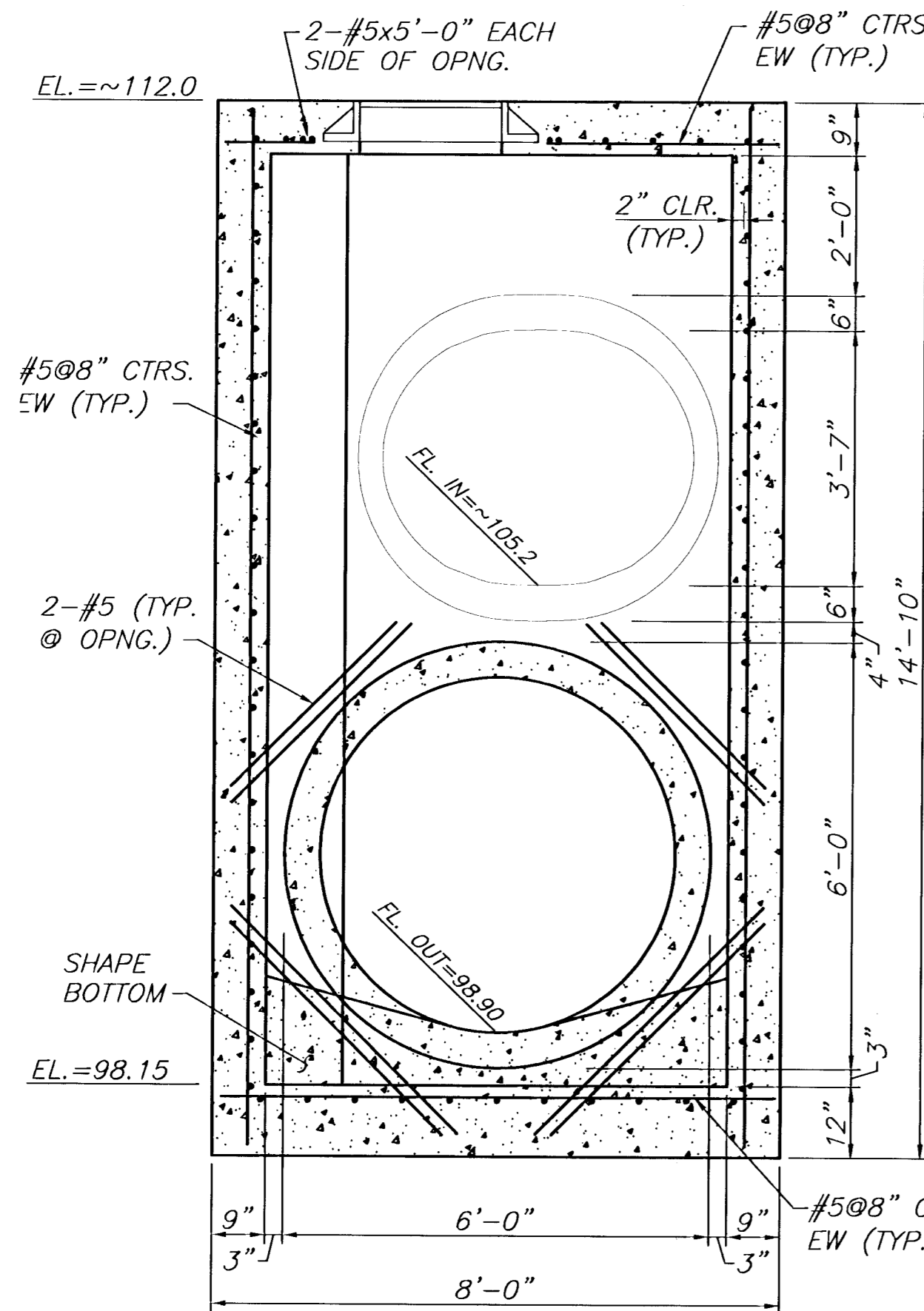


NOTE:  
 EXTEND REINFORCING OF CONCRETE PRECAST SECTIONS 8" INTO CAST-IN-PLACE MANHOLES. DRILLED AND GROUTED DOWELS WILL NOT BE ACCEPTED. MANHOLES MUST BE CAST-IN-PLACE. PRECAST WILL NOT BE ACCEPTED WHERE CASTING A MANHOLE AROUND AN EXISTING PIPE, THE PIPE AREA TO BE CAST INTO THE MANHOLE WALL SHALL BE SAND BLASTED JUST PRIOR TO CASTING. THE CAST-IN-PLACE MANHOLE SHALL BE CAST AROUND ALL EXISTING AND PROPOSED PIPE OR PRECAST CONCRETE. SEE DETAIL ON SHEET 25.

CONCRETE:  
 Fc = 4,000 PSI  
 Fs = 24,000 PSI (GR 60) ASTM A615

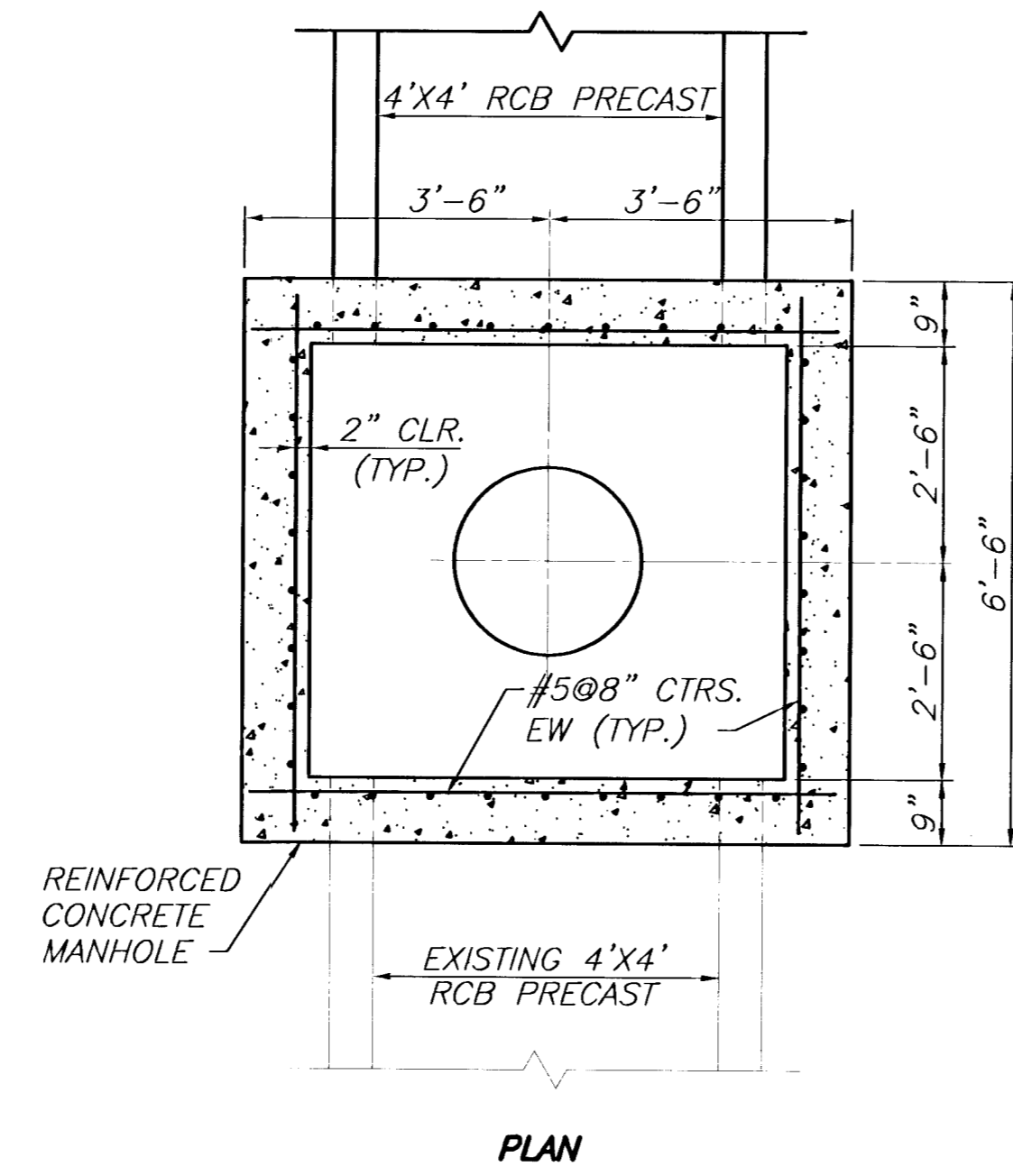


PLAN

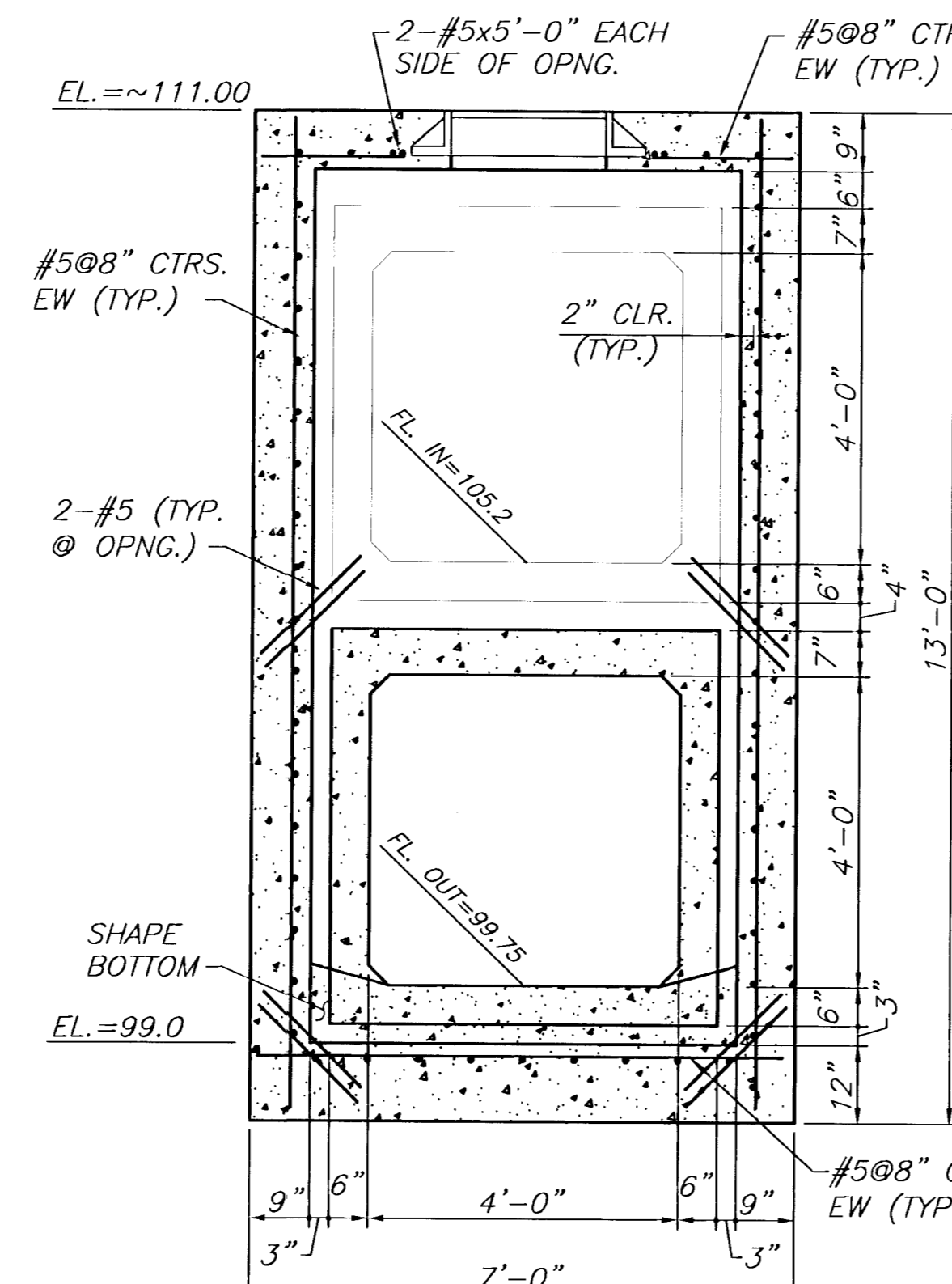


NOTE: SEE REINFORCED CONCRETE MANHOLE DETAILS SHEET.

**MANHOLE ELEVATION**  
 AT STA. 70+74.36, 42.13' LT

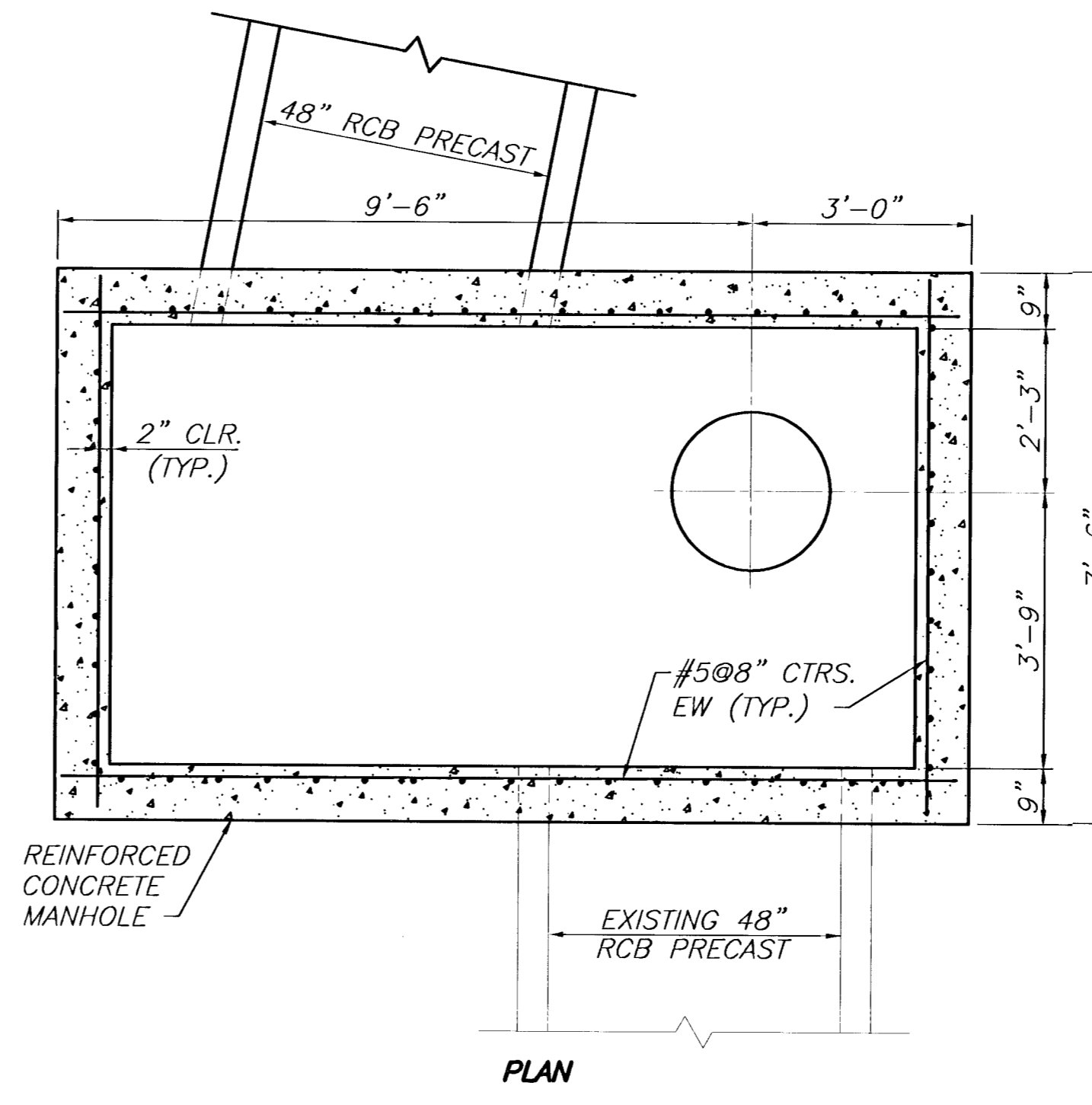


PLAN

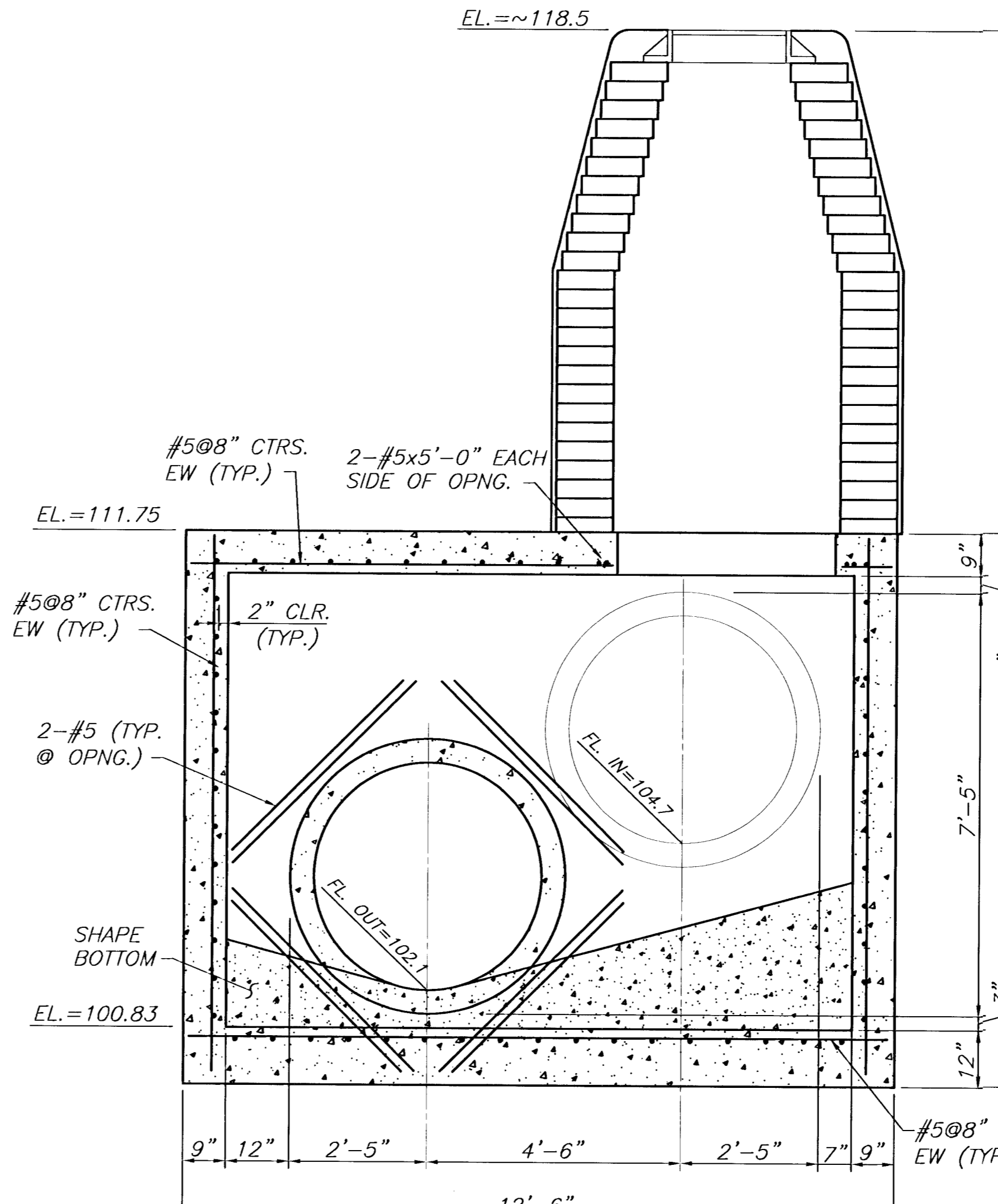


NOTE: SEE REINFORCED CONCRETE MANHOLE DETAILS SHEET.

**MANHOLE ELEVATION**  
 AT STA. 77+18.0, 66.1' RT

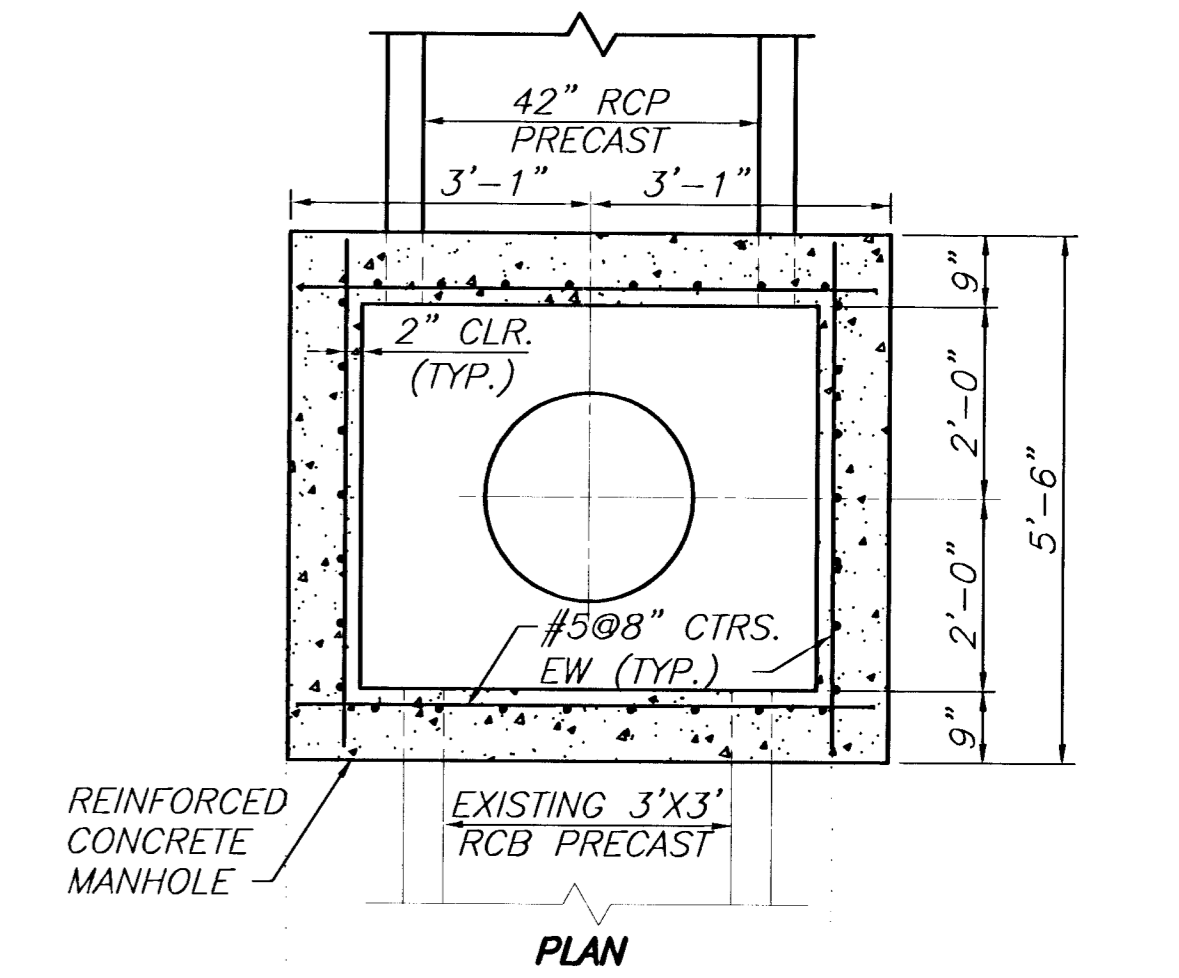


PLAN

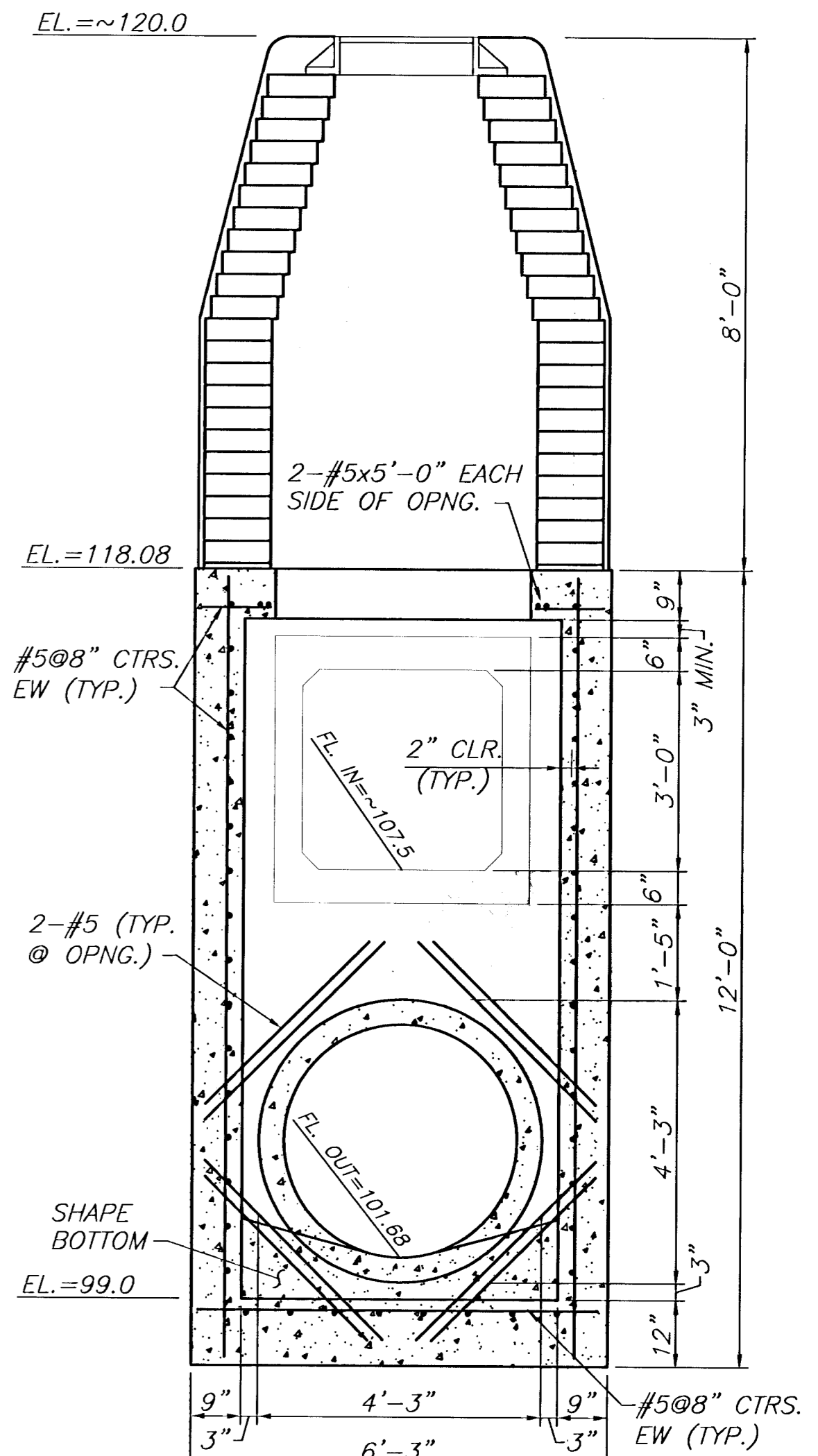


NOTE: SEE REINFORCED CONCRETE MANHOLE DETAILS SHEET.

**MANHOLE ELEVATION**  
 AT STA. 104+44.1, 88.7' RT

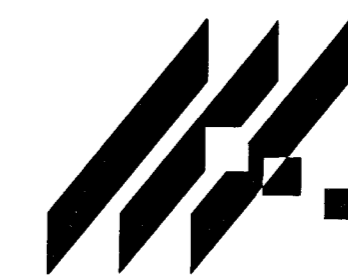


PLAN



NOTE: SEE REINFORCED CONCRETE MANHOLE DETAILS SHEET.

**MANHOLE ELEVATION**  
 AT STA. 104+75.4, 36.5' LT



**MKEC**  
 ENGINEERING CONSULTANTS  
 411 N. WEBB ROAD  
 WICHITA, KS. 67206  
 316-684-9600

**AREA "K" PART 2 - PHASE 2**  
**WICHITA DRAINAGE CANAL**  
PROJECT NAME

**DROP MANHOLE DETAILS**  
SHEET TITLE

JNJ DESIGN BY:	RSB DRAWN BY:	TKM CHECKED BY:
JAN. 2001 DATE	94011 JOB NO.	18 / 47 SHEET / OF

G:\CIVIL\AREA\_K\194011\20DETAILS\1941022A.dwg Mon Jun 04 14:05:42 2001

G:\CIVIL\AREA\_K\194011\20DETAILS\1941022A.dwg 05/16/2001 07:15:14 AM CST