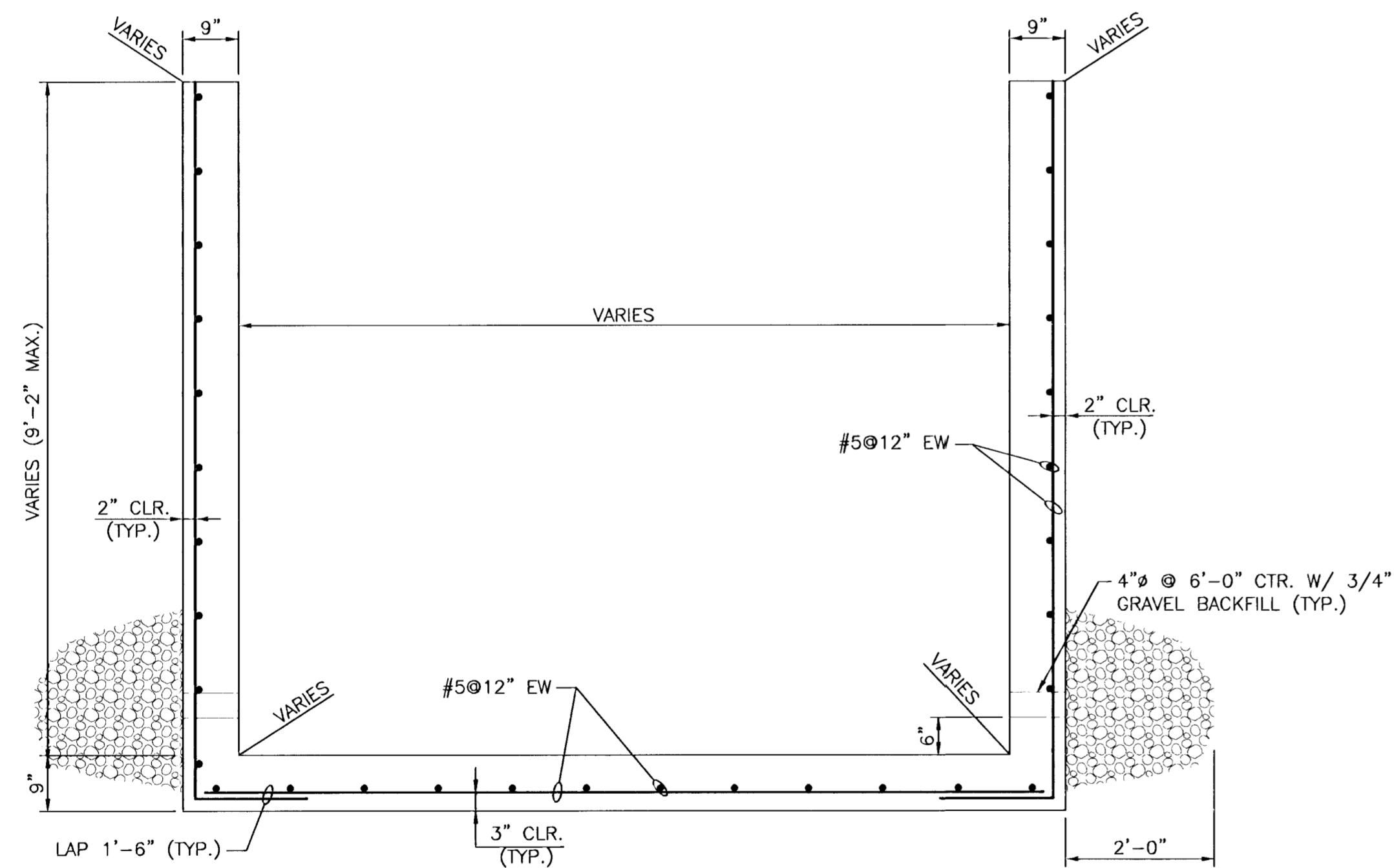
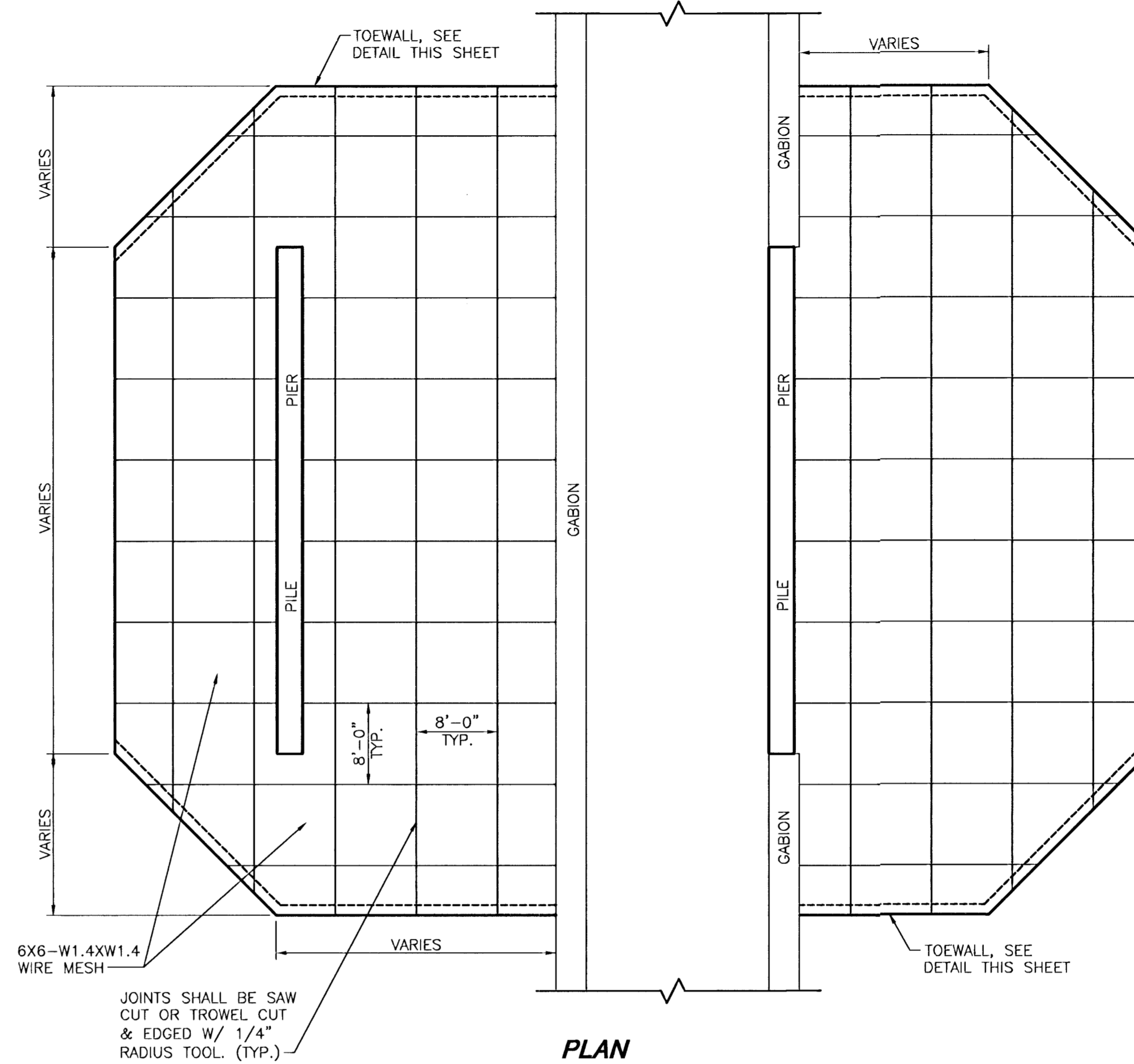


**SECTION**  
**TYPICAL HEADWALL REINFORCING**  
 SCALE: NONE

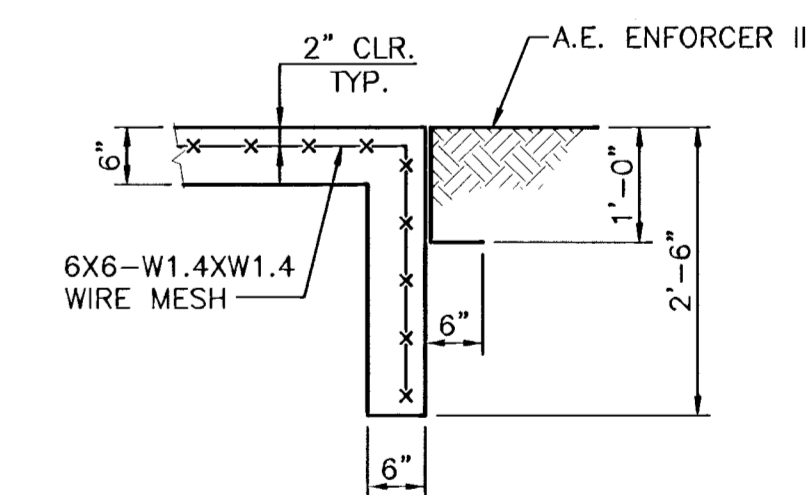


**SECTION**  
**TYPICAL WINGWALL REINFORCING**  
 SCALE: NONE

- STA. 77+16.8, 57.2' RT
- STA. 82+61.8, 57.7' RT
- STA. 90+20.3, 57.0' RT
- STA. 90+37.2, 35.9' LT
- STA. 98+71.8, 57.0' RT
- STA. 104+41.6, 59.0' RT



**ELEVATION**  
**6" REIN. CONC. RIPRAP WITH 2.5' DEEP TOEWALLS**  
 @ 10TH, 11TH, 13TH, AND 15TH ST. BRIDGES  
 SEE PLAN SHEETS FOR PLAN DIMENSIONS



**TYPICAL TOEWALL SECTION**



**AREA "K" PART 2 - PHASE 2**  
**WICHITA DRAINAGE CANAL**  
 PROJECT NAME  
**BRIDGE SLOPE PAVING AND HEADWALL /**  
**WINGWALL REINFORCING DETAILS**  
 SHEET TITLE

JNJ	RSB	TKM
DESIGN BY,	DRAWN BY,	CHECKED BY,
JAN. 2001	94011	23 / 47
DATE	JOB NO.	SHEET / OF