

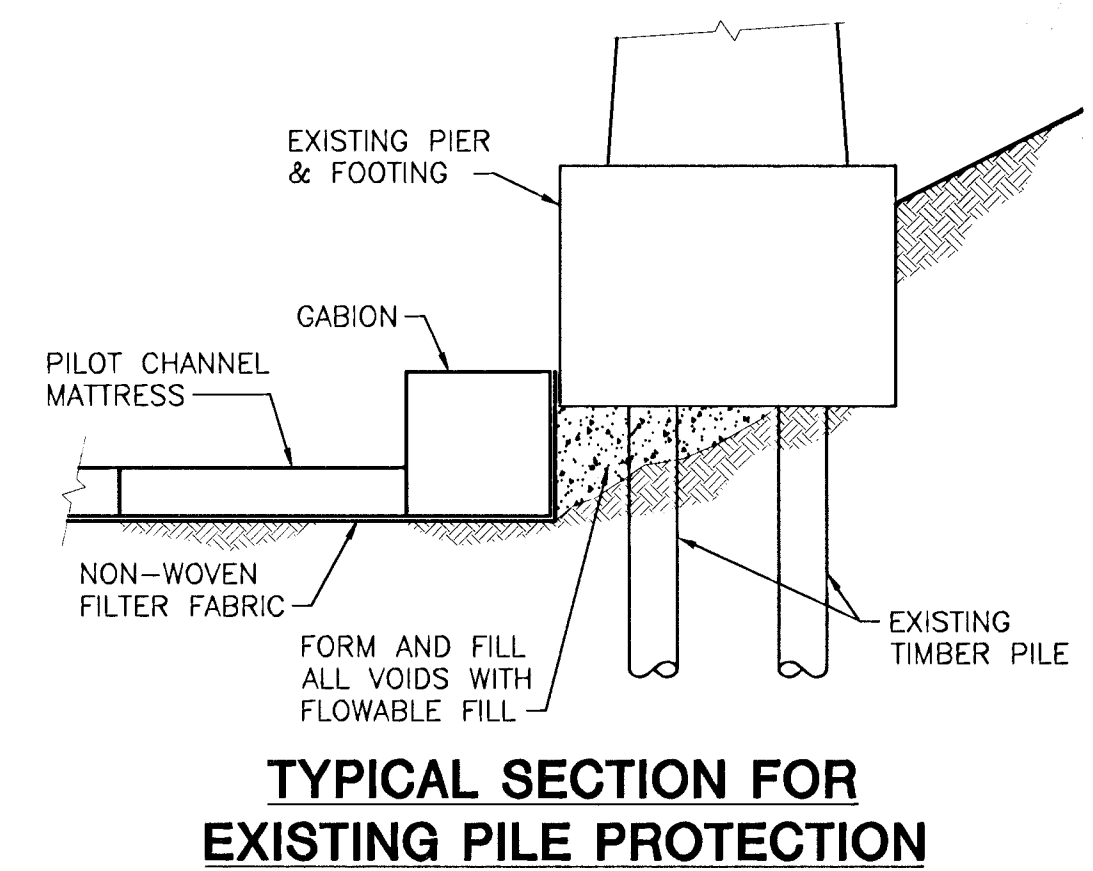
DRAINAGE CANAL BRIDGE
At the Following Streets

EIGHTEENTH SEVENTEENTH FIFTEENTH	THIRTEENTH ELEVENTH TENTH	NINTH MURDOCK CENTRAL	THIRD SECOND FIRST
----------------------------------------	---------------------------------	-----------------------------	--------------------------

& McLOSS

WICHITA KANSAS Aug. 1924
DESIGNED BY P.L. BROCKWAY CITY ENGR.
DRAWN BY HAROLD A. SMART.
Scale

3					
2					
1					
NO.	DATE	REVISIONS	BY	APP'D	
STATE HIGHWAY COMMISSION OF KANSAS					
EXISTING WICHITA DRAINAGE CANAL BRIDGES					
PROJ. 35W-87-I35W-1(58)48			SEDGWICK CO.		
SHEET NO.	OF	SCALE	APP'D		
DESIGNED	DETAILED	QUANTITIES	TRACED		



**AREA "K" PART 2 - PHASE 2
WICHITA DRAINAGE CANAL**
PROJECT NAME

BRIDGE PIER PROTECTION
SHEET TITLE

JNJ DESIGN BY:	RSB DRAWN BY:	TKM CHECKED BY:
JAN. 2001 DATE	94011 JOB NO.	26 / 47 SHEET / OF