

- P.O.T. @ Sta. 9+47.893
1. Found 19 mm pipe .061 m below concrete pavement in thimble
 2. "V" cut top of curb 6.572 m NNW
 3. Spk. and washer in W. face power pole 9.949 m SSE
 4. Spk. and washer in E. face light pole 9.275 m SSW

NOTE: The Contractor shall coordinate his work with the construction of the storm sewer box and replacement of sanitary sewer line at Abutment #1.

Sta. 9+976.0, 2.5 m Rt. and Sta. 9+977.2, 7.4 m Rt. Remove existing San. Swr. manholes prior to bridge construction - Under separate Contract.

Sta. 9+966.0 Remove and relocate 4 guard posts, Lt. & Rt. Install posts in same manner at new ramps (Typical 2 plcs.)

Sta. 10+000.000 Construct 13.5-18-13.5 m R.C. Haunched Slab Spans 13' Skew Lt. 9.8 m Roadway with 1.8 m Walkway Lt. & Rt. See Sh. No. 10-23

Sta. 10+000.000 Remove Reinf. Concrete Bridge 12 m Roadway with 2.3 m Walkway, Lt. & Rt.

Sta. 9+963.2 Construct Sidewalk Ramp Type I, Lt. W = 3.6 m See Sh. No. 9

Sta. 9+939.7 Construct Sidewalk Ramp Type I W = 1.525 m See Sh. No. 9

Sta. 10+034.2 to Sta. 10+042.2 Construct 8.0 m Type I Combined Curb & Gutter, Lt. & Rt. See Sh. No. 8

STA. 9+965.775 BEGIN Proj. No. 472-82784

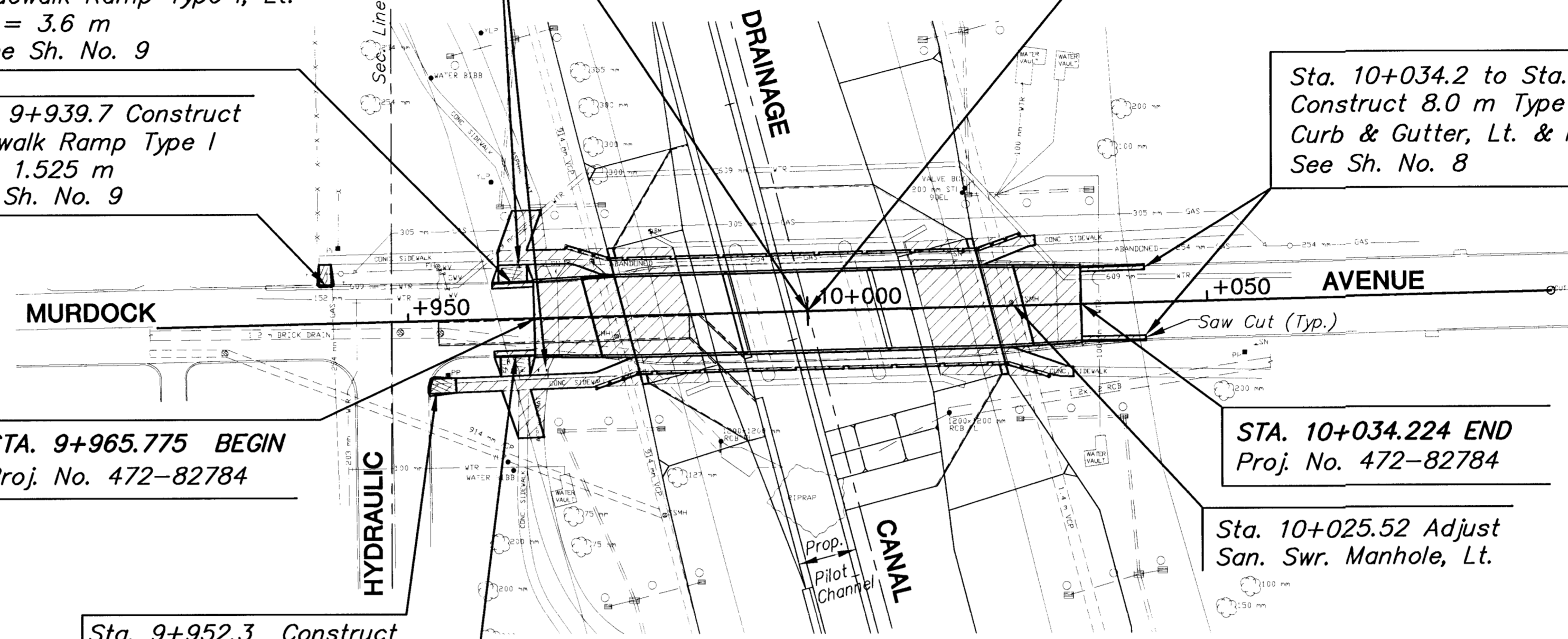
STA. 10+034.224 END Proj. No. 472-82784

Sta. 9+952.3 Construct Sidewalk Ramp Type I W = 1.8 m See Sh. No. 9

Sta. 9+963.2 Construct Sidewalk Ramp Type I, Rt. W = 3.6 m See Sh. No. 9

Sta. 10+025.52 Adjust San. Swr. Manhole, Lt.

- P.O.T. @ Sta. 10+093.120
1. "X" cut east edge of project on @ of Murdock 23.683 m NE
 2. Spk. and washer in S. face power pole 22.975 m SE
 3. Spk. and washer in N. face power pole 4.831 m N
 4. "V" cut top of curb in line with tree



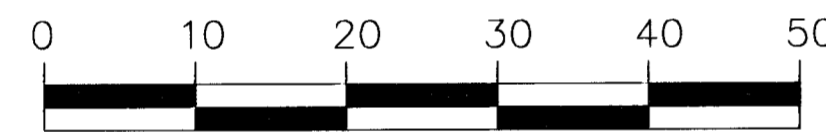
SCALE 1:500

LEGEND

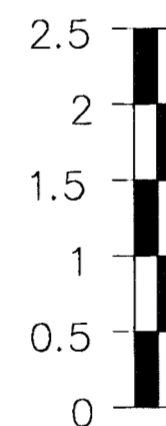


BM#2 "□" Cut on the northeast corner of an overhead drain box at the 8th column south of 9th St. North, right bank of Wichita Drainage Canal Elev. 396.548

SCALE 1:500

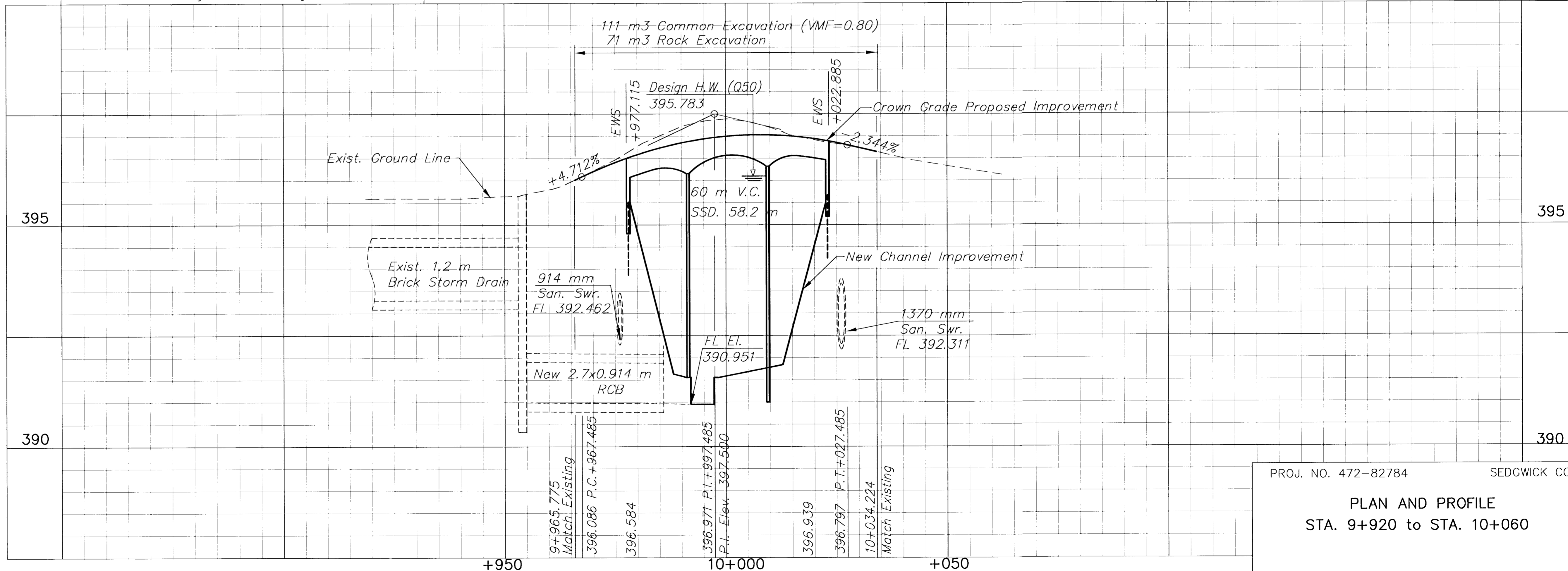


PLAN: Lat. & Long. (meters)



PROFILE: Horiz. same as above, Vert. →

BM#1 "□" Cut on the northwest corner of the west abutment of the Burlington Northern Bridge Elev. 396.965



UTILITIES:

City of Wichita Water/Sewer Dept.
455 N. Main
Wichita, Ks. 67202
Bill Perkins (316) 268-4555

K.G.E.
1900 E. Central, Box 208
Wichita, Ks. 67214
Russ Chitwood (316) 261-6251

Southwestern Bell Telephone Co.
154 N. Broadway
Wichita, Ks. 67202
Greg Sharpe (316) 268-2245

Multimedia Cablevision
701 E. Douglas
Wichita, Ks. 67202
Don Shue (316) 262-4270

Kansas Gas Service
1021 E. 26th St. N.
Wichita, Ks. 67219
Jim Stoltz (316) 832-3122

PROJ. NO. 472-82784

SEDGWICK CO.

PLAN AND PROFILE
STA. 9+920 to STA. 10+060