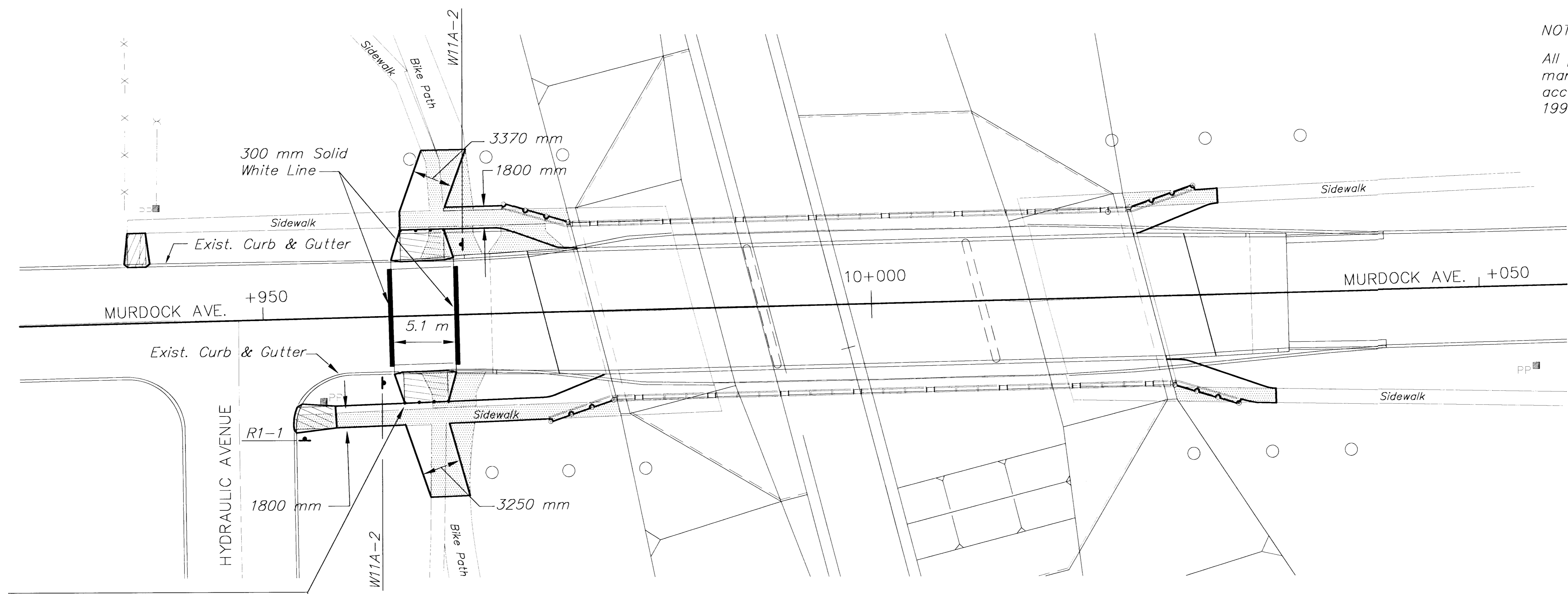


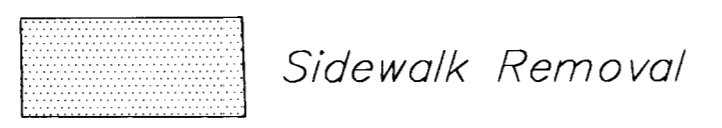
NOTE:
All pavement markings shall be Cold Plastic pavement marking material. Material and installation shall be according to Kansas Department of Transportation 1990 Edition Standard Specifications.



SCALE = 1:200

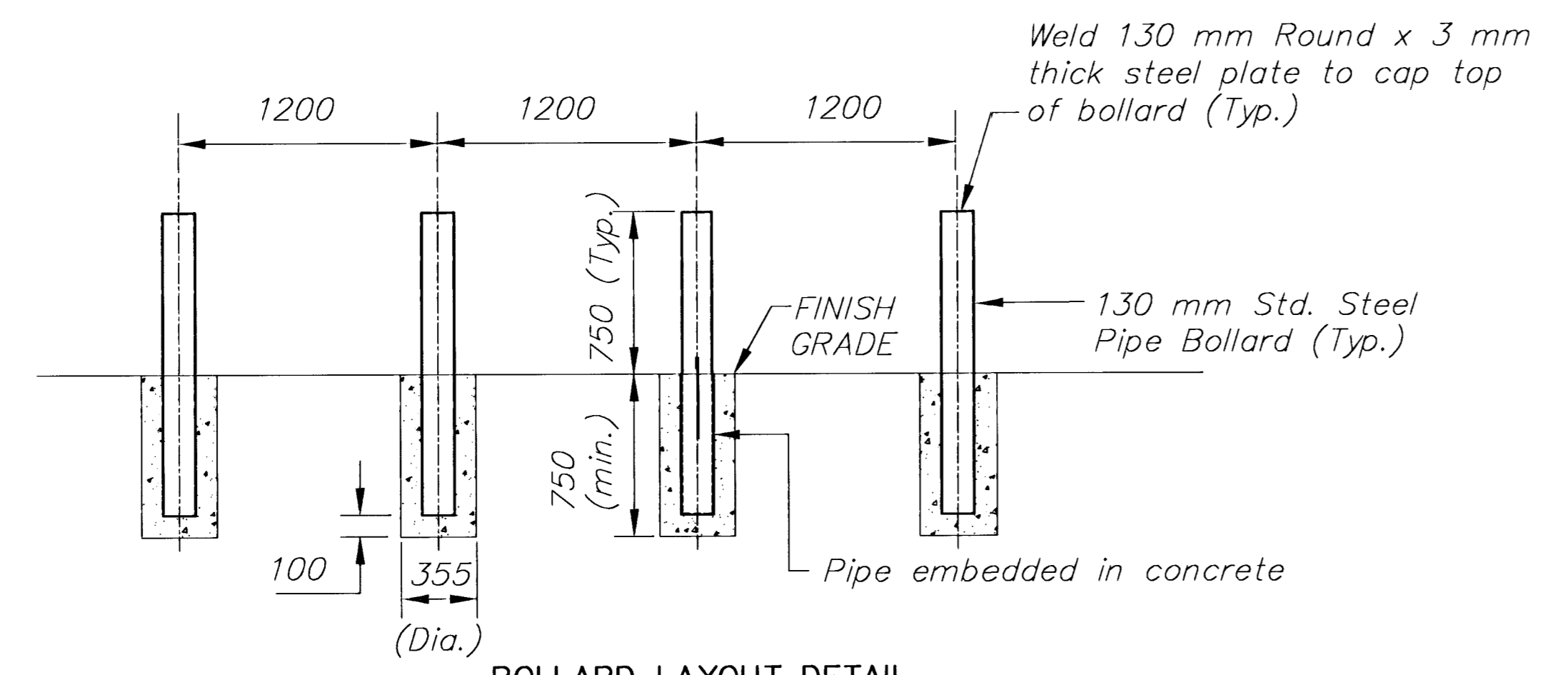
Sta. 9+966.0 Remove and relocate 4 guard posts, Lt. & Rt. Install bollards in same manor at new ramps (Typical 2 plcs.) See details this sheet

TYPICAL PAVEMENT MARKING DETAILS

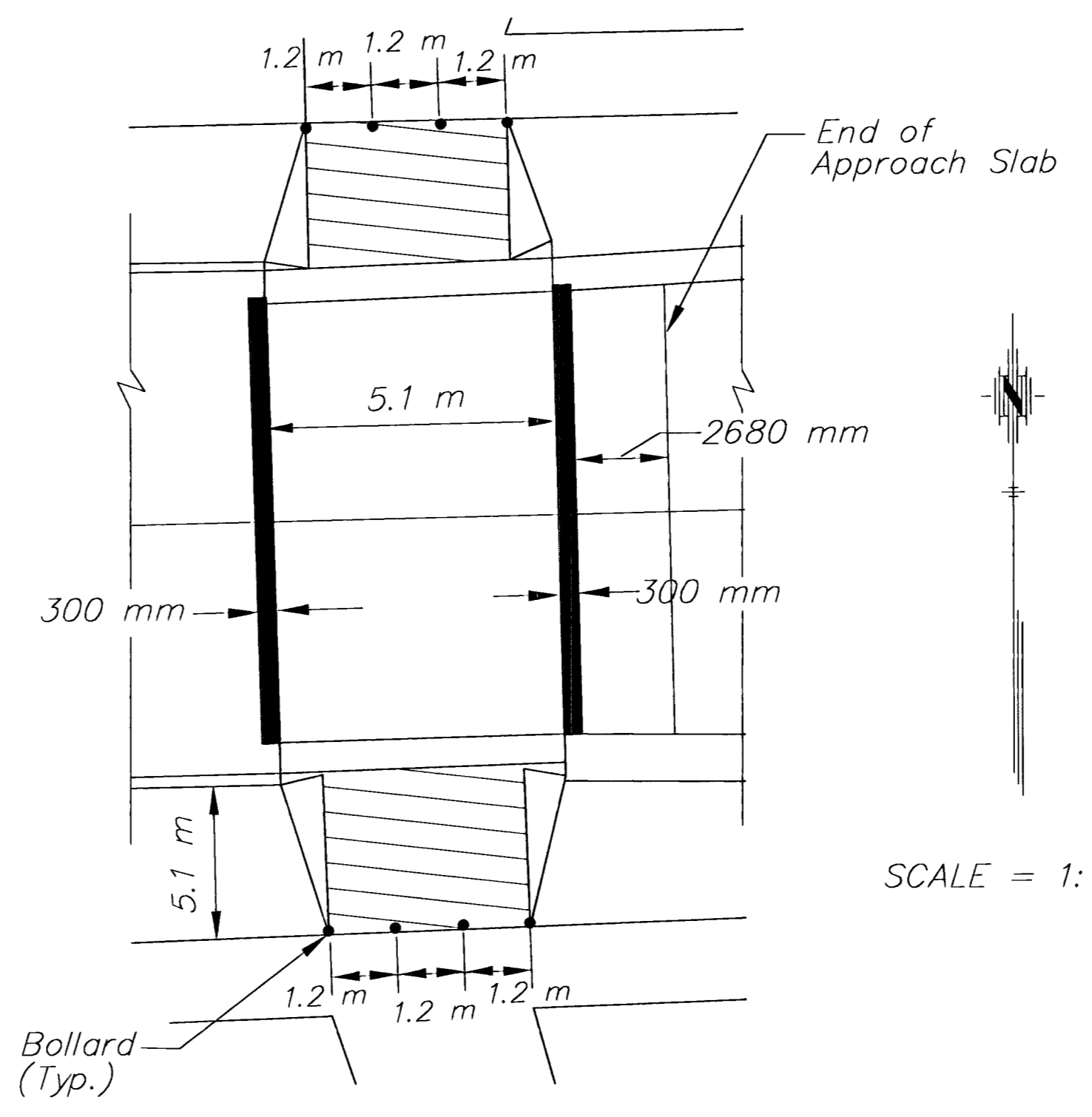


TYPICAL CROSSWALKS

TYPE I: Crosswalk lines shall be 300 mm solid white lines. They shall be spaced 5.1 m apart from inside edge to inside edge.
Pavement Marking shall be paid subsidiary to "Concrete Pavement (260 Uniform) (AE)".



BOLLARD LAYOUT DETAIL
Bollards to be paid subsidiary to "Sidewalk Construction (100 mm)(AE)"



CROSSWALK AND BOLLARD PLAN

SCALE = 1:400

PAVEMENT MARKING SUMMARY (FOR INFORMATION ONLY)		
ITEM	QUANTITY	UNIT
300 mm Solid white line	15.8	m

MURDOCK AVENUE BRIDGE
PROJECT NAME

MISCELLANEOUS PAVEMENT DETAILS
SHEET TITLE

MID-KANSAS ENGINEERING CONSULTANTS, INC. 411 N. WEBB ROAD WICHITA, KS. 67206 316-684-9600	KJS DESIGN BY. DPG DRAWN BY. FEB. 1999 DATE	PAF CHECKED BY. 97042 JOB NO. 4 / 39 SHEET/OF
--	---	---