

Total Waterway = 71 sq. m.

**EXISTING BRIDGE OPENING**

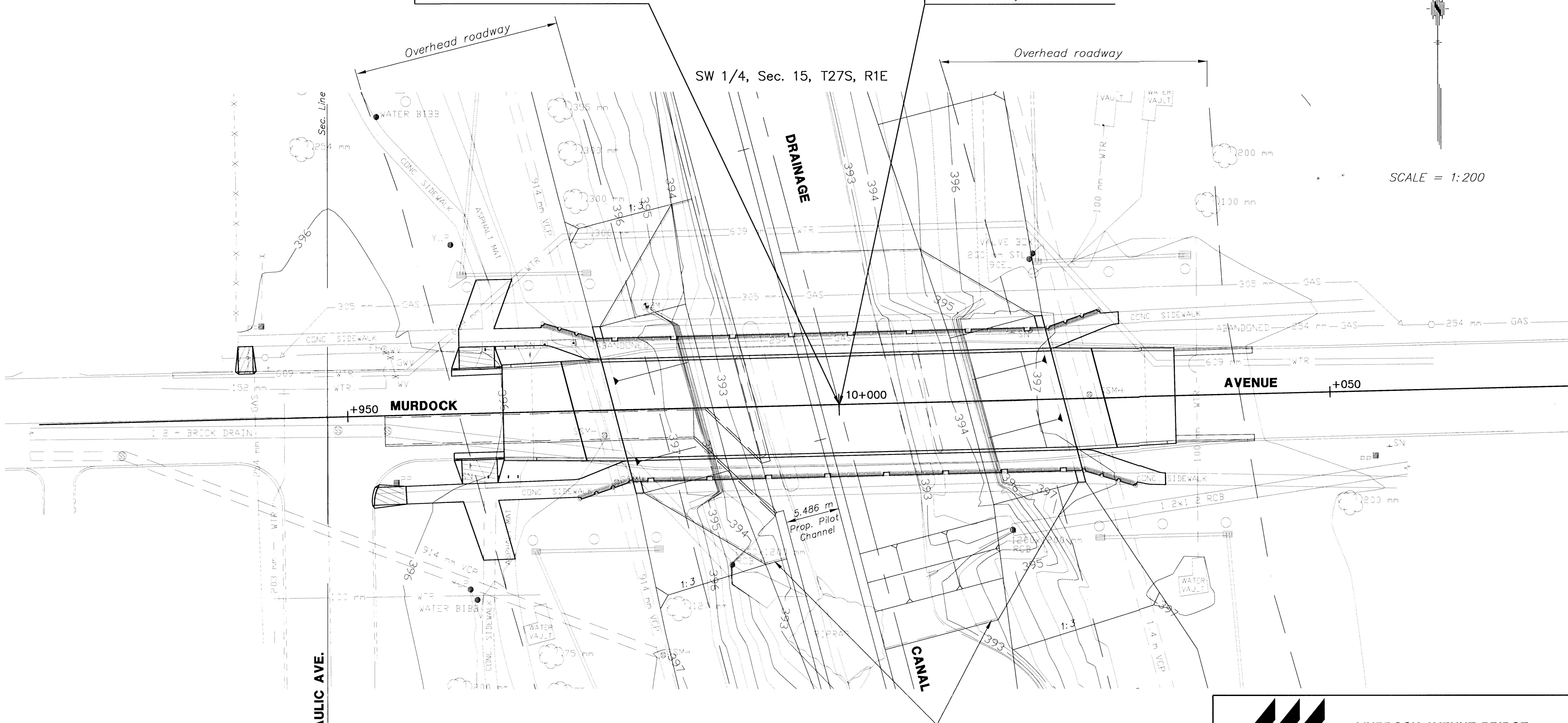
12 m Roadway  
2.3 m Walkway Lt. & Rt.

- P.O.T. @ Sta. 9+047.893
1. Found 19 mm pipe .061 m below concrete pavement in thimble
  2. "V" cut top of curb 6.572 m NNW
  3. Spk. and washer in W. face power pole 9.949 m SSE
  4. Spk. and washer in E. face light pole 9.275 m SSW

- P.O.T. @ Sta. 10+093.120
1. "X" cut east edge of project on @ of Murdock
  2. Spk. and washer in S. face power pole 23.683 m NE
  3. Spk. and washer in N. face power pole 22.975 m SE
  4. "V" cut top of curb in line with tree 4.831 m N

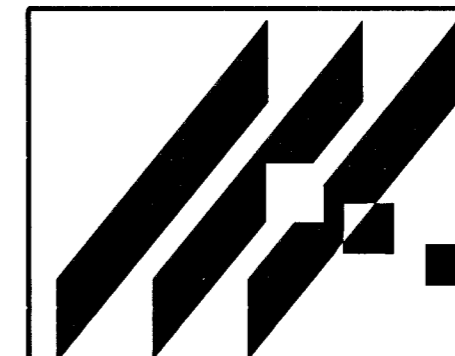
Sta. 10+000 Remove Existing Reinf. Concrete Bridge  
12 m Roadway with 2.3 m Walkway, Lt. & Rt.

Sta. 10+000 Construct 13.5-18-13.5 R.C. Haunched Slab Spans 13° Skew Lt. 9.8 m Roadway with 1.8 m Walkway, Lt. & Rt.



SCALE = 1:200

150 mm concrete lining with toewalls constructed with canal improvements



MID-KANSAS ENGINEERING CONSULTANTS, INC.  
411 N. WEBB ROAD  
WICHITA, KS. 67206  
316-684-9600

**MURDOCK AVENUE BRIDGE**  
PROJECT NAME

**CONTOUR MAP**  
SHEET TITLE

KJS DESIGN BY:	DPG DRAWN BY:	PAF CHECKED BY:
FEB. 1999 DATE	97042 JOB NO.	11 / 39 SHEET / OF

K:\CIVIL\197042\PLANS\7042CON.DWG Thu Mar 25 16:01:56 1999 BY MLK