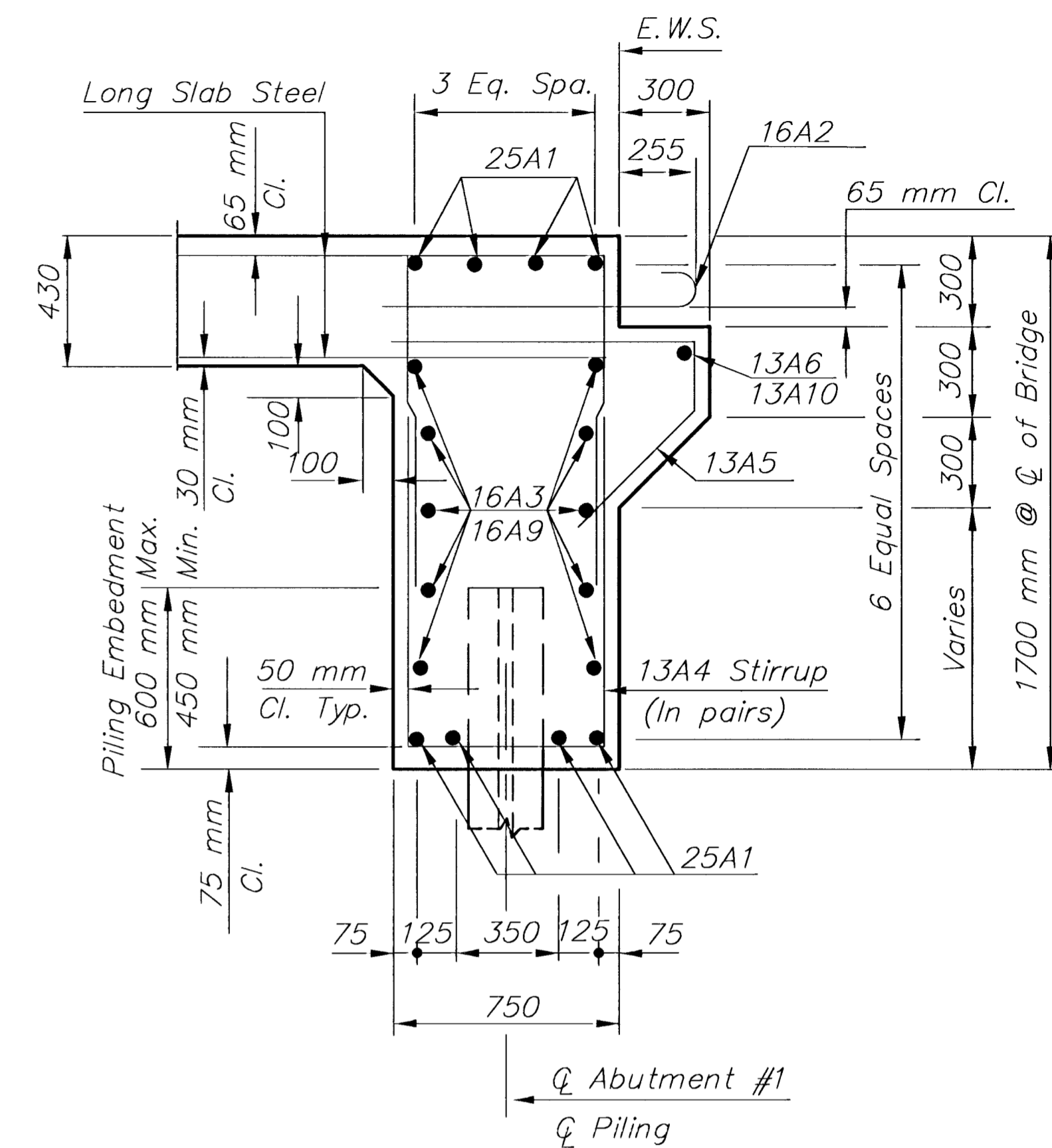
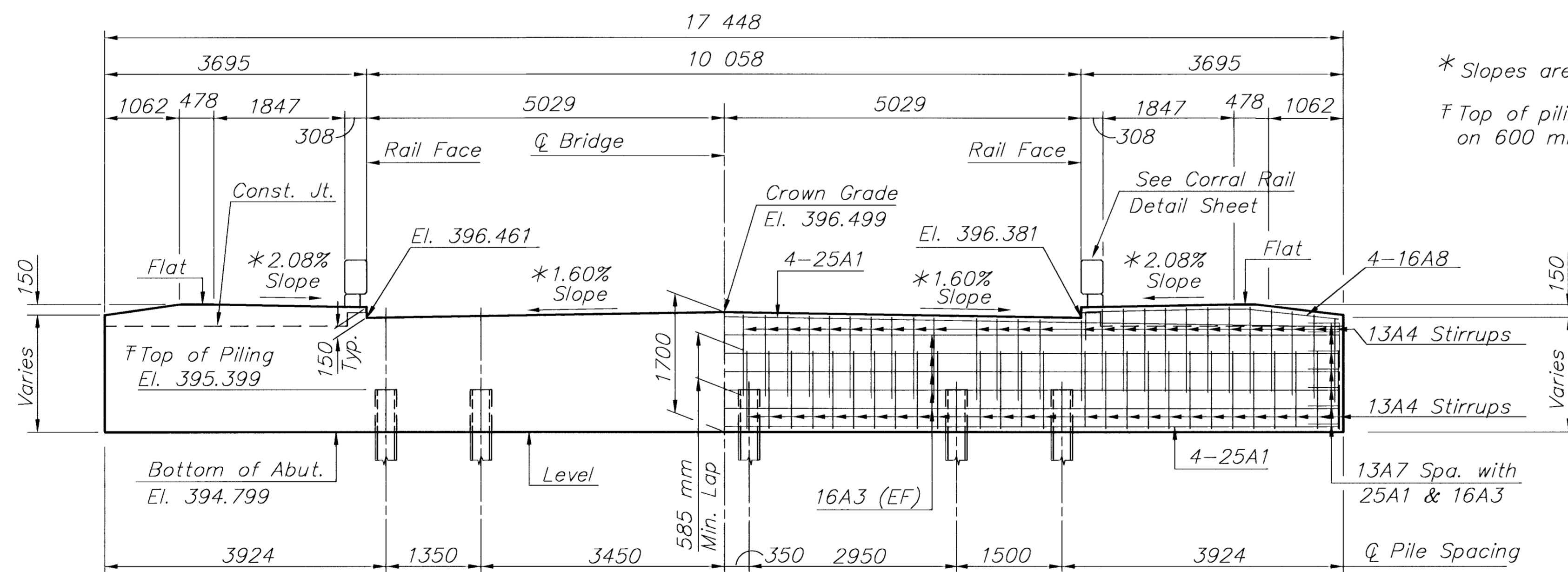


PLAN



TYPICAL SECTION



ELEVATION

(Along Q Abutment)

ABUTMENT PILE LOADING

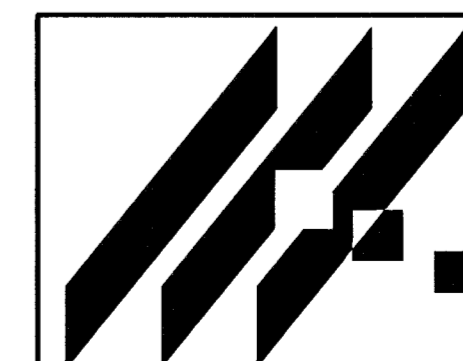
	Design	Allowable
Group I Loading	392 kN/Pile	500 kN/Pile

\* Slopes are normal to Q Bridge

F Top of piling elevations are based on 600 mm maximum embedment.

NOTES:

1. See "Rail Details" for additional reinforcing to be placed in abutment.
2. Adjust stirrups to avoid conflict with rail bars.



MID-KANSAS ENGINEERING CONSULTANTS, INC.  
411 N WEBB ROAD  
WICHITA, KS. 67206  
316-684-9600

MURDOCK AVENUE BRIDGE  
PROJECT NAME

ABUTMENT #1 DETAILS  
SHEET TITLE

KJS DESIGN BY:	DPG DRAWN BY:	PAF CHECKED BY:
FEB. 1999 DATE	97042 JOB NO.	13 / 39 SHEET/OF