

SPECIAL DRIVEWAY NOTES:

1. RELATIVE TO EXISTING CONCRETE DRIVEWAYS EXTENDING INTO THE 40 FOOT WIDE HALF STREET RIGHT-OF-WAYS ON 33RD STREET NORTH: DRIVEWAYS SHALL BE REMOVED MINIMALLY TO THE 30 FOOT LINE. STANDARD DRIVE ENTRANCES SHALL BE CONSTRUCTED WITH THE BACK OF THE SIDEWALK SECTION AT THE 30 FOOT LINE. ADDITIONAL DRIVEWAY SHALL BE REMOVED, IF NECESSARY, TO MEET SLOPE REQUIREMENTS FOR DRIVEWAY ENTRANCE CONSTRUCTION.
2. RELATIVE TO PROPOSED STANDARD DRIVE ENTRANCES IN 40 FOOT HALF STREET RIGHT-OF-WAY ON 33RD STREET NORTH: CONSTRUCT STANDARD DRIVE TO THE RIGHT-OF-WAY LINE WITH THE SIDEWALK SECTION AT THE 30 FOOT LINE.

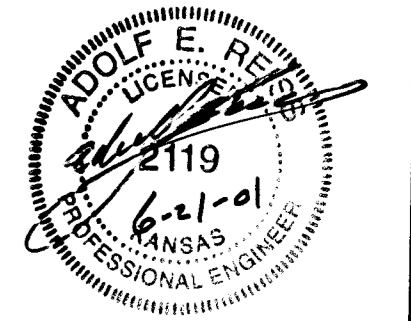
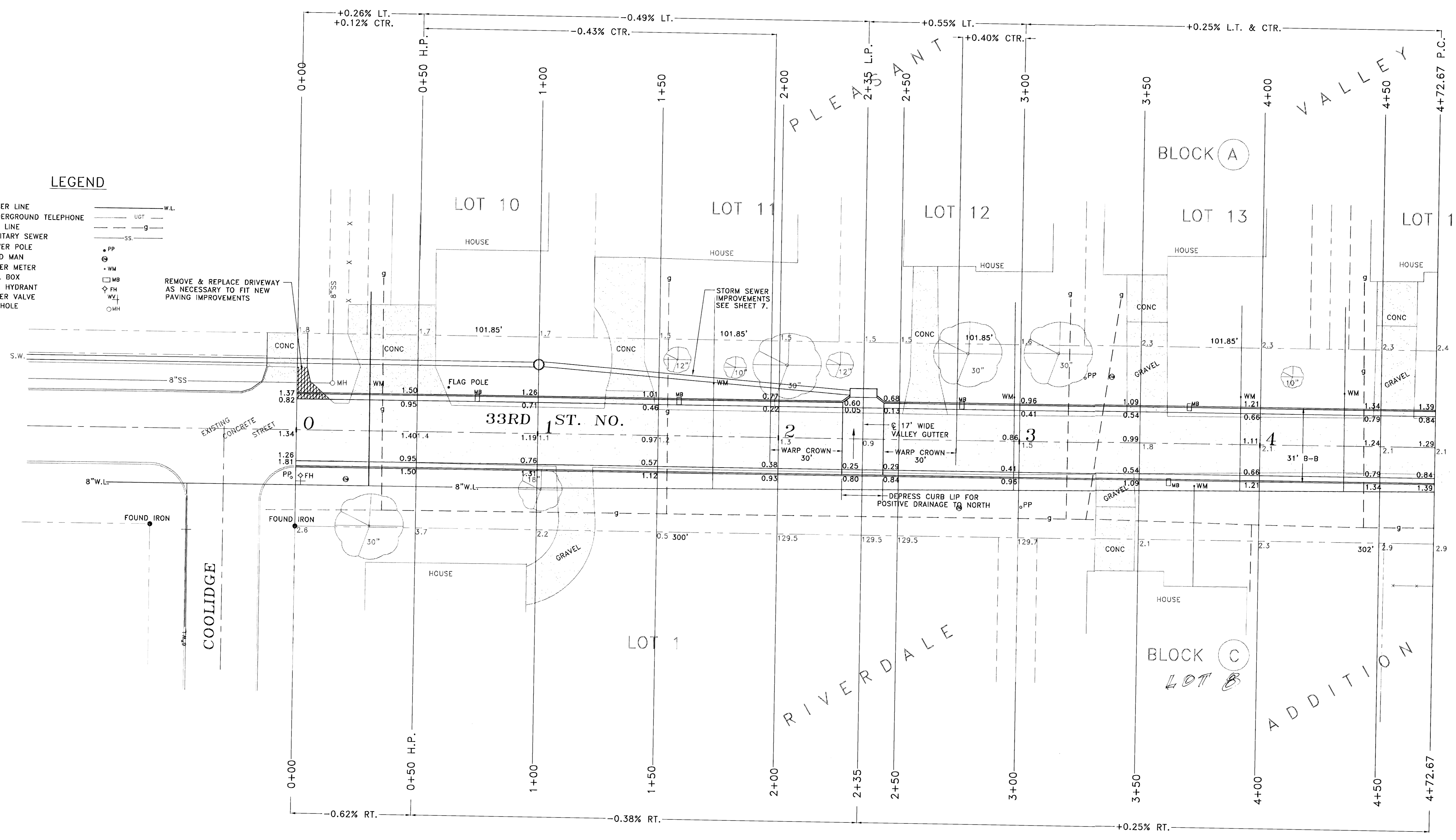
NOTE:
WATER LINE TO BE LOWERED AND
RELOCATED PRIOR TO CONSTRUCTION.

LEGEND

- WATER LINE ——— W.L.
- UNDERGROUND TELEPHONE ——— UGT
- GAS LINE ——— g
- SANITARY SEWER ——— SS
- POWER POLE ——— PP
- DEAD MAN ——— DM
- WATER METER ——— WM
- MAIL BOX ——— MB
- FIRE HYDRANT ——— FH
- WATER VALVE ——— WV
- MANHOLE ——— MH

REMOVE & REPLACE DRIVEWAY
AS NECESSARY TO FIT NEW
PAVING IMPROVEMENTS

STORM SEWER
IMPROVEMENTS
SEE SHEET 7.



REISS & GOODNESS ENGINEERS
2160 WEST 21st STREET
WICHITA, KANSAS 67203
(316) 832-0213

REVISION	DIRECTORY	DRAWN BY	FILE NAME	CHECKED BY	DESIGNED BY	PROJECT
	C.V.C.F. WICHITA	C.E.	COOLIDGE1		R.P.	33RD STREET NORTH - COOLIDGE TO PORTER

33RD STREET NORTH - COOLIDGE TO PORTER

CUSTOMER

STA. 0+00 TO STA. 4+72.67