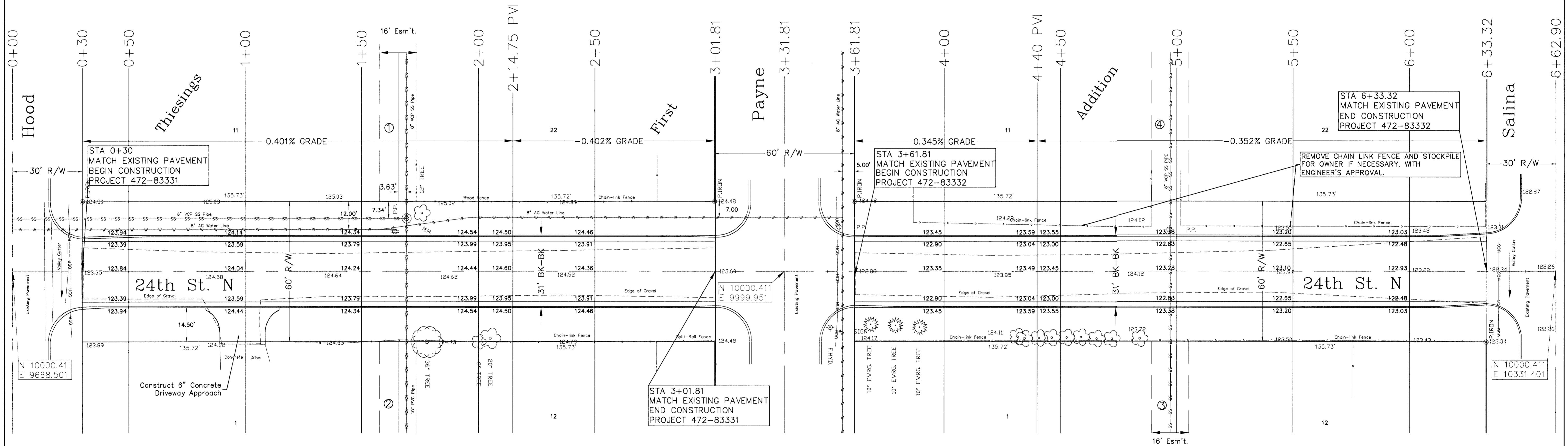
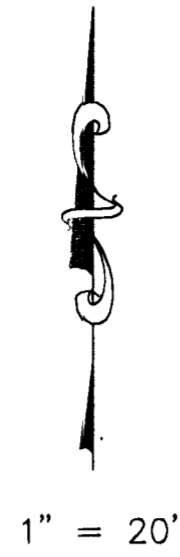


BENCHMARKS

2401 N. HOOD - S.E. CORNER OF PORCH
ELEV. = 125.74

SQUARE CUT WEST END RETURN S.W. CORNER 24TH AND HOOD
ELEV. = 123.65



<p>THE CITY OF WICHITA</p> <p>CITY ENGINEER'S OFFICE CITY HALL - SEVENTH FLOOR 455 NORTH MAIN STREET WICHITA, KANSAS 67202 (316) 268-4501 (316) 268-4114 FAX</p>	24TH STREET NORTH HOOD TO SALINA	
	M. E. LINDEBAK P.E. - CITY ENGINEER	
	ENGINEER: J. KALLMAN	DRAWN BY: D. ARY
	PROJECT NUMBER 472-83331/83332	DCA NUMBER 765875/785878
	DATE MAY 01	SHEET 3 OF 6