

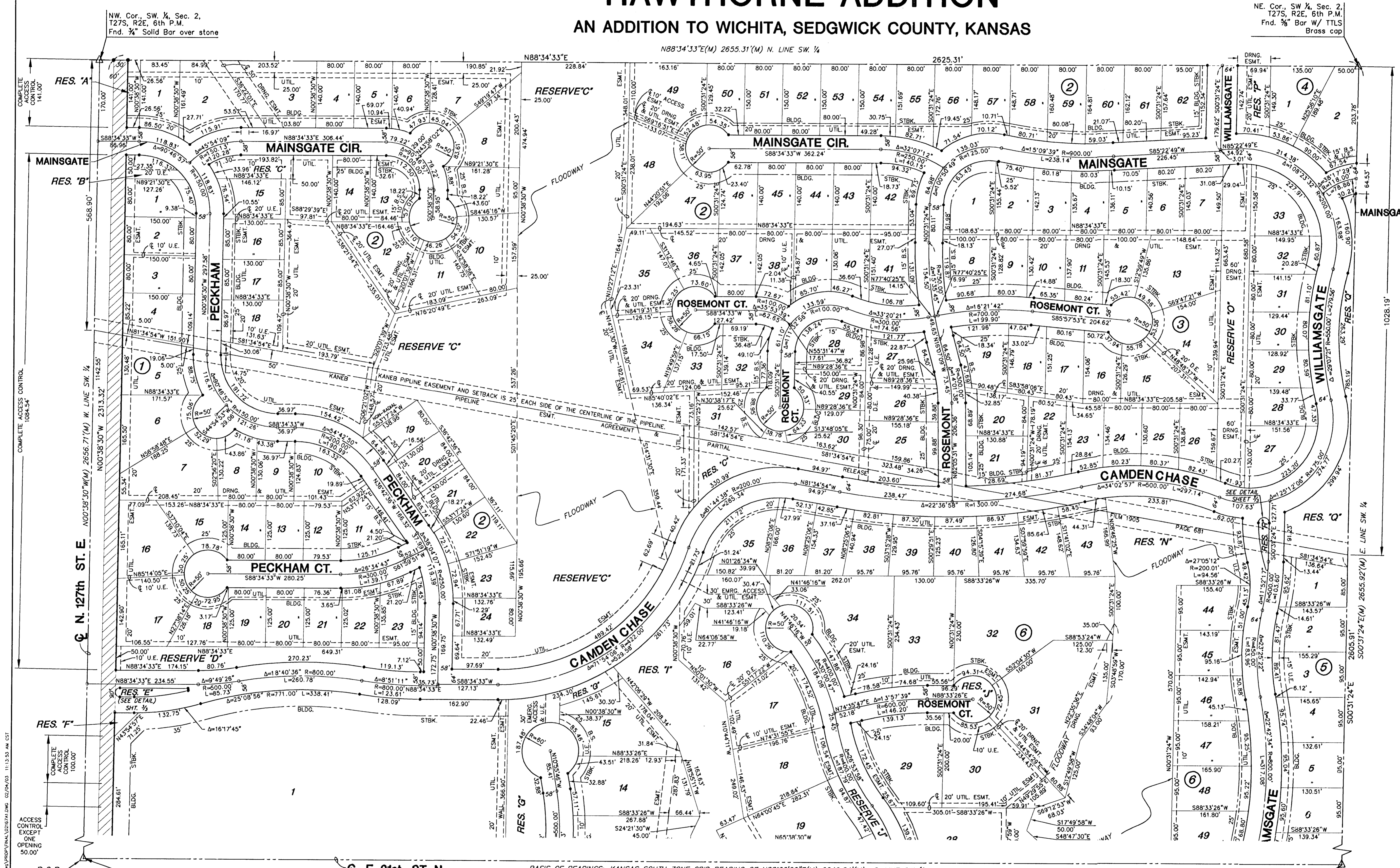
FINAL PLAT

HAWTHORNE ADDITION

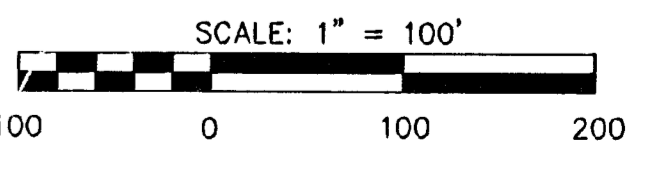
AN ADDITION TO WICHITA, SEDGWICK COUNTY, KANSAS

NE. Cor., SW 1/4, Sec. 2,
T27S, R2E, 6th P.M.
Fnd. 3/4" Bar W/ T/LS
Brass cap

MINIMUM PAD ELEVATIONS (LOWEST OPENINGS)			
LOT	BLOCK	ELEVATION (CITY DATUM)	ELEVATION (USGS)
2	2	181.6	1369.0
3	2	181.6	1369.0
8	2	175.1	1362.5
9	2	174.7	1362.1
10	2	175.1	1362.5
11	2	178.1	1365.5
12	2	178.6	1366.0
14	2	180.1	1367.5
15	2	180.1	1367.5
16	2	179.6	1367.0
17	2	179.1	1366.5
18	2	179.1	1366.5
19	2	176.1	1363.5
20	2	176.1	1363.5
21	2	175.6	1363.0
22	2	174.6	1362.0
23	2	173.6	1361.0
24	2	173.6	1361.0
25	2	173.6	1361.0
30	2	173.6	1361.0
31	2	173.6	1361.0
33	2	173.6	1361.0
34	2	173.6	1361.0
35	2	174.1	1361.5
48	2	174.7	1362.1
49	2	175.9	1363.3
62	2	180.9	1368.3
7	3	178.6	1366.0
13	3	178.6	1366.0
14	3	178.1	1365.5
26	3	178.1	1365.5
27	3	178.1	1365.5
28	3	178.1	1365.5
29	3	178.1	1365.5
30	3	178.1	1365.5
31	3	178.6	1366.0
32	3	178.6	1366.0
33	3	178.6	1366.0
1	4	180.9	1368.3
14	6	170.3	1357.7
15	6	170.9	1358.3
16	6	170.9	1358.3
17	6	170.3	1357.7
18	6	170.3	1357.7
19	6	170.3	1357.7
28	6	174.1	1361.5
30	6	174.1	1361.5
31	6	174.1	1361.5
32	6	176.1	1363.5
43	6	177.6	1365.0
44	6	176.1	1363.5
45	6	175.1	1362.5
46	6	174.1	1361.5
47	6	174.1	1361.5
48	6	174.1	1361.5
49	6	174.1	1361.5



- LEGEND**
- △ = SECTION CORNER MONUMENT FOUND
 - ⊙ = FOUND PROPERTY CORNER REBAR
 - = SET 5/8" REBAR W/ MKEC CLS #39 CAP
 - B.S. = BUILDING SETBACK
 - U.E. = UTILITY EASEMENT
 - (M) = MEASURED DIMENSION
 - ▭ = STREET DEDICATION



NW. Cor., SW 1/4, Sec. 2,
T27S, R2E, 6th P.M.
Fnd. 3/4" Solid Bar over stone

N. 127th ST. E. 100'38.30" W (M) 2556.71' (M) N. LINE SW 1/4

RES. A', RES. B', RES. C', RES. D', RES. E', RES. F', RES. G', RES. H', RES. I', RES. J', RES. K', RES. L', RES. M', RES. N', RES. O', RES. P', RES. Q'

MAINS GATE CIR.
PECKHAM CT.
ROSEMONT CT.
CAMDEN CHASE
WILLIAMS GATE
MINGS GATE

FLOODWAY

COMPLETE ACCESS CONTROL 1084.34'

COMPLETE ACCESS CONTROL EXCEPT ONE OPENING 50.00'

P.O.B.

SW. Cor., SW 1/4, Sec. 2,
T27S, R2E, 6th P.M.,
Fnd. 3/4" Pipe in Thimble

SE. Cor., SW 1/4, Sec. 2,
T27S, R2E, 6th P.M.,
Fnd. 3/4" Pipe

BASIS OF BEARINGS: KANSAS SOUTH ZONE GRID BEARING OF N88°33'26"E (M) 2649.84' (M) S. LINE SW 1/4