

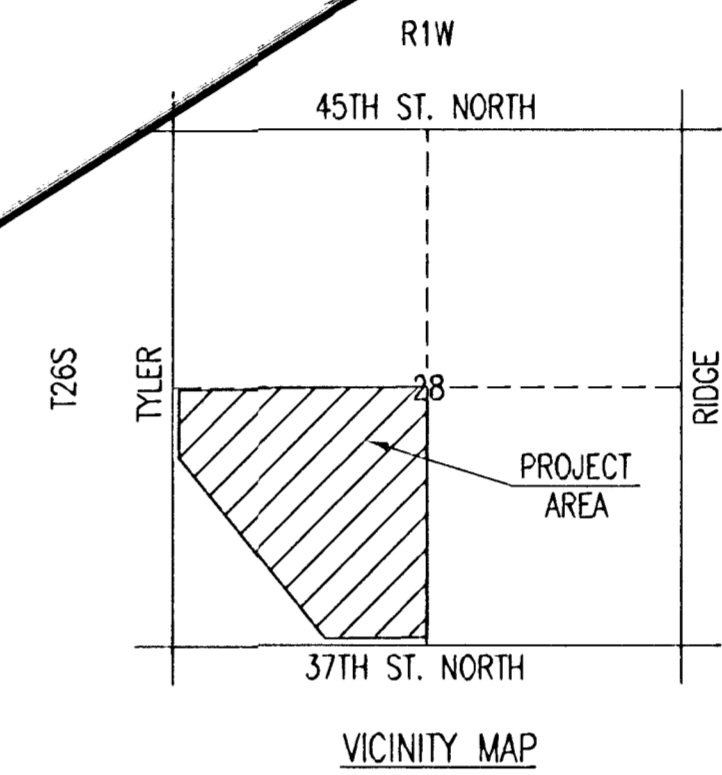
FOUR CORNER PLAN FOR AVALON PARK

AN ADDITION TO WICHITA
SEDGWICK COUNTY, KANSAS

N.E. Corner SW 1/4, Sec. 28
Twp. 26S, R-1-W
Found 3/4" Rebar

SCALE: 1" = 100'
• = 3/4" IRON PIPE W/PEC CAP UNLESS OTHERWISE NOTED

- LEGEND**
- (X) STD. BASEMENT
 - (W.O) WALK-OUT BASEMENT
 - (V.O) VIEW-OUT BASEMENT
 - STORM WATER FLOW
 - SPOT ELEVATION
 - W.O. WALK-OUT
 - V.O. VIEW-OUT
 - T.F. TOP OF FOUNDATION



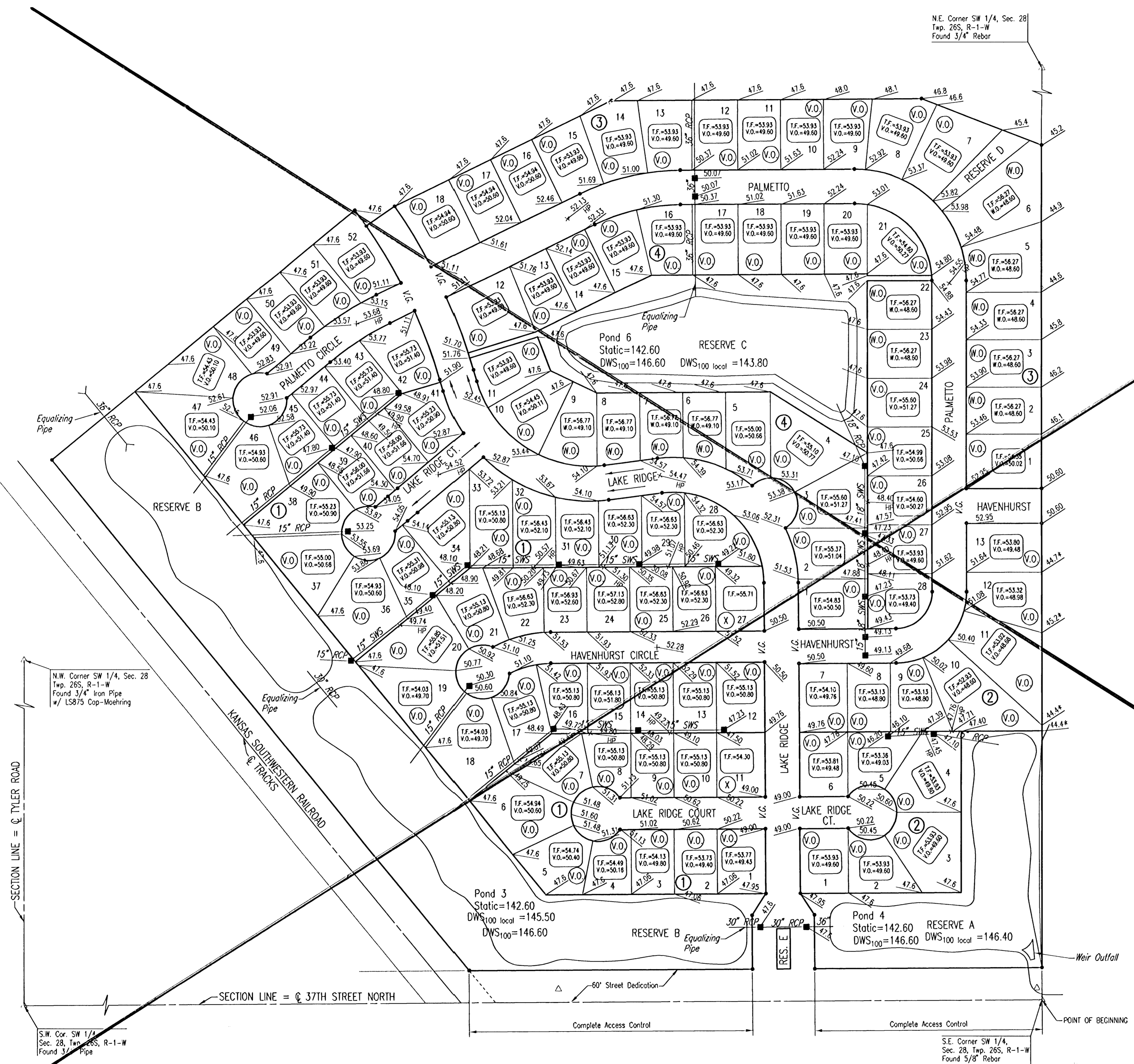
VO OR WO WAS CONSIDERED ACCEPTABLE
IF THE TOP OF FOUNDATION WAS 5' OR
LESS ABOVE THE FRONT PROPERTY LINE.

MINIMUM OPENINGS	ELEVATION (N.G.V.D.)	CITY DATUM
BLOCK 1		
LOTS 1-6, 18-19	1336.0	148.6
LOTS 36-37, 46-52	1349.6	150.8
LOTS 7-17, 20-22, 33-35	1338.2	150.9
LOTS 38-45	1339.0	151.6
LOTS 23, 31-32	1339.7	152.3
BLOCK 2		
LOTS 1-4, 10-13	1336.0	148.6
LOTS 5-9	1336.2	148.8
BLOCK 3		
LOTS 1-6	1336.0	148.6
LOTS 7-18	1349.6	149.6
BLOCK 4		
LOTS 4-9, 22-25	1336.0	148.6
LOTS 1-3, 26-28	1336.8	149.4
LOTS 10-21	1349.6	149.6

REVISED FEBRUARY 6, 2004

SEE REVISED SHT. 4 OF 22
APRIL 11, 2006

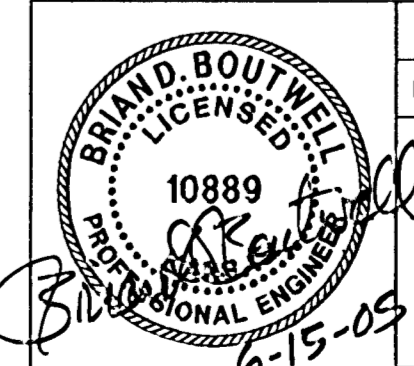
DSNR: BLB OPER: BLB SCALE: 1"=100.00
Q:\2005\050660\000\050660-000-C-4CRNR-A.dwg 06-13-2005 03:15:02 pm



N.W. Corner SW 1/4, Sec. 28
Twp. 26S, R-1-W
Found 3/4" Iron Pipe
w/ LS875 Cap-Moehring

S.W. Cor. SW 1/4
Sec. 28, Twp. 26S, R-1-W
Found 3/4" Pipe

S.E. Corner SW 1/4,
Sec. 28, Twp. 26S, R-1-W
Found 5/8" Rebar



No.	Revision	By	Date
	AVALON PARK-PHASE 5		
4-CORNER LOT GRADING PLAN (FOR INFORMATION ONLY)			
JAMES L. ARMOUR, P.E.-CITY ENGINEER CITY OF WICHITA PROJECT NO. 472-83839			
Professional Engineering Consultants, P.A. 303 S. TOPEKA • WICHITA, KANSAS 67202 316-262-2691 • FAX 316-262-3003			
Designed by	BDB, BLB	Job No.	35-05060-000
Drawn by	BJS	Date	February 2005
			Sht. 4 of 22