

FOUR CORNER PLAN FOR AVALON PARK

AN ADDITION TO WICHITA
SEDGWICK COUNTY, KANSAS

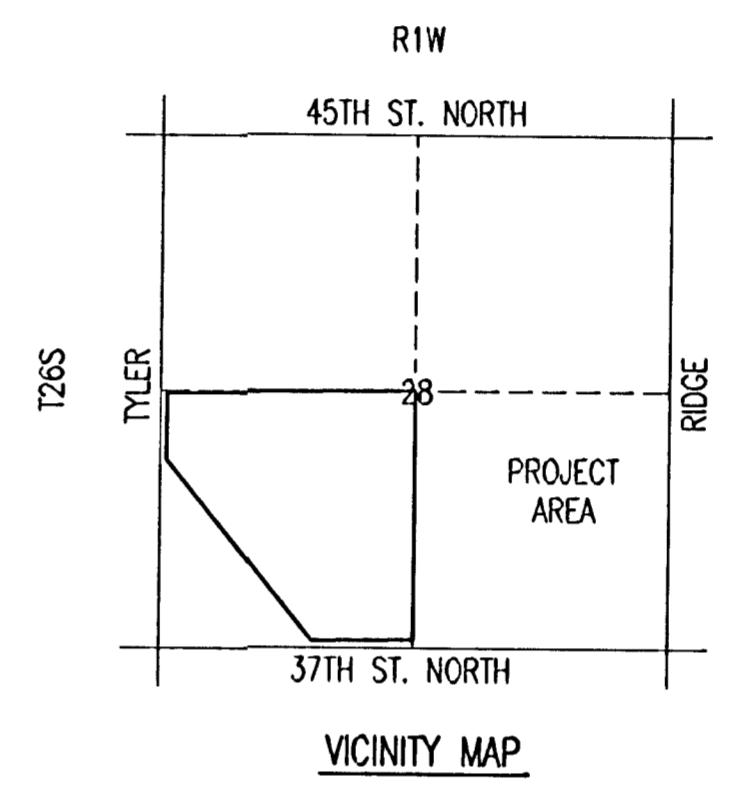
N.E. Corner SW 1/4, Sec. 28
Twp. 26S, R-1-W
Found 3/4" Rebar

CHANGE ORDER #1
SND #264 & #265
ON OCA #751401 & #751402
(by others)

SCALE: 1" = 100'
• = 3/4" IRON PIPE W/PEC CAP UNLESS OTHERWISE NOTED

LEGEND

- (X) STD. BASEMENT
- (W.O.) WALK-OUT BASEMENT
- (V.O.) VIEW-OUT BASEMENT
- STORM WATER FLOW
- SPOT ELEVATION
- W.O. WALK-OUT
- V.O. VIEW-OUT
- T.F. TOP OF FOUNDATION



VO OR WO WAS CONSIDERED ACCEPTABLE
IF THE TOP OF FOUNDATION WAS 5' OR
LESS ABOVE THE PROPERTY LINE.

BENCHMARKS:

BM #50 - "I" Post, 1/2 mile E. of Tyler Rd.,
14' N. of N. edge 37th St. N.
Elev.=1333.15 N.G.V.D.
Elev.=145.75 CITY DATUM

BM #51 - "I" Post, 3/8 mile E. of Tyler Rd.,
14' N. of N. edge 37th St. N.,
E. of R.R. tracks 186±
Elev.=1335.55 N.G.V.D.
Elev.=148.15 CITY DATUM

BM #58 - Chiseled "d" on S. end concrete headwall,
E. end RCB under Tyler Rd. at 1/2 mile
line, S. of K96 Highway.
Elev.=1342.03 N.G.V.D.
Elev.=154.63 CITY DATUM

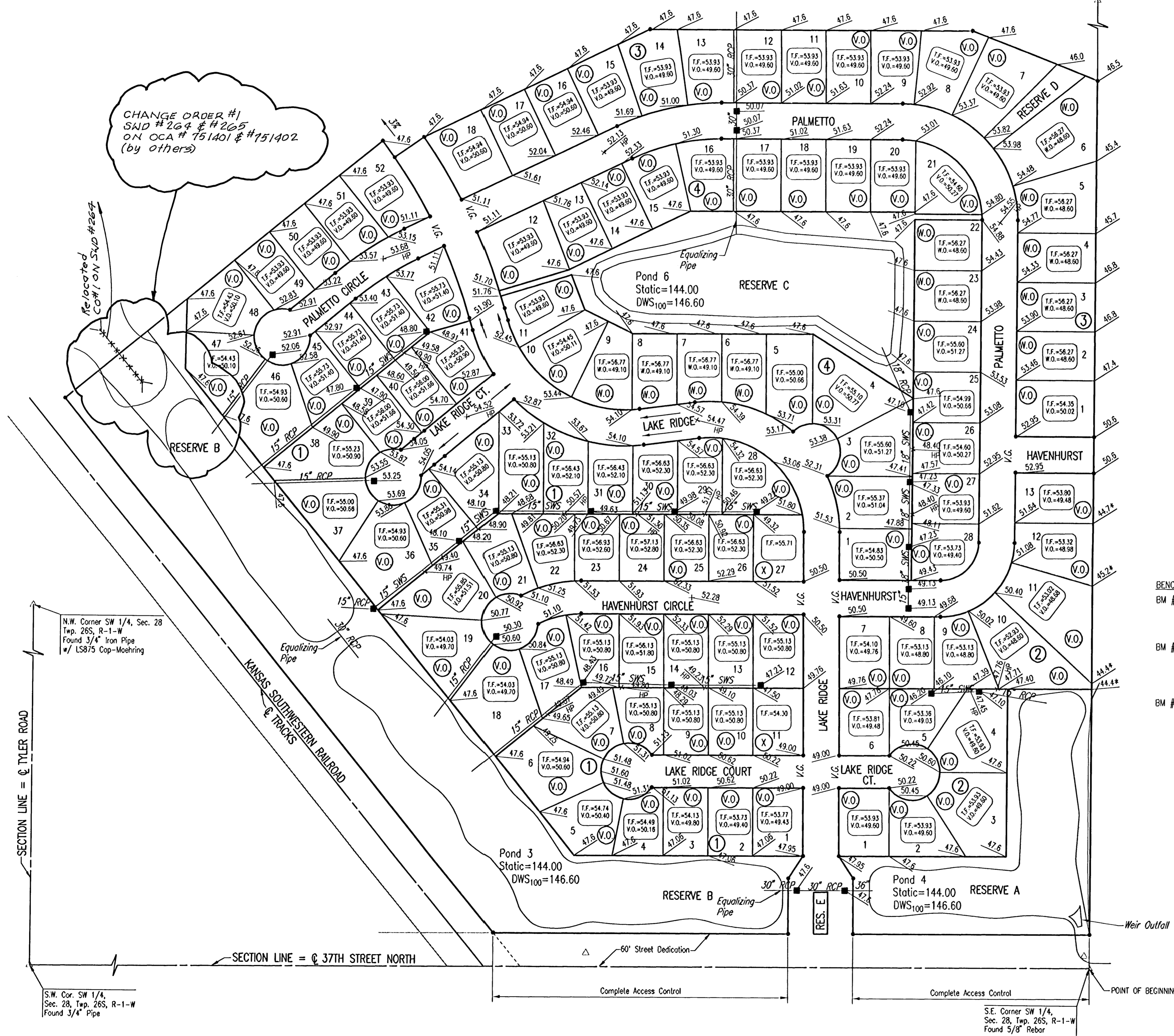
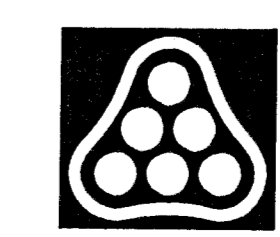
MINIMUM OPENINGS

	ELEVATION (N.G.V.D.)	CITY DATUM
BLOCK 1		
LOTS 1-6, 18-19	1336.0	148.6
LOTS 36-37, 46-52	1349.6	149.6
LOTS 7-17, 20-22, 33-35	1338.2	150.8
LOTS 38-45	1338.3	150.9
LOTS 23, 31-32	1339.0	151.6
LOTS 24-30	1339.7	152.3
BLOCK 2		
LOTS 1-4, 10-13	1336.0	148.6
LOTS 5-9	1336.2	148.8
BLOCK 3		
LOTS 1-6	1336.0	148.6
LOTS 7-18	1349.6	149.6
BLOCK 4		
LOTS 4-9, 22-25	1336.0	148.6
LOTS 1-3, 26-28	1336.8	149.4
LOTS 10-21	1349.6	149.6

REVISED FEBRUARY 6, 2004
REVISED DECEMBER 2, 2004
REVISED APRIL 11, 2006

RECORD DRAWING

No.	Revision	By	Date
AVALON PARK-PHASE 5			
4-CORNER LOT GRADING PLAN (FOR INFORMATION ONLY)			
JAMES L. ARMOUR, P.E.-CITY ENGINEER CITY OF WICHITA PROJECT NO. 472-83839			
Professional Engineering Consultants, P.A. 303 S. TOPEKA • WICHITA, KANSAS 67202 316-262-2691 • FAX 316-262-3003			
Designed by	BDB, BLB	Job No.	35-05059-000
Drawn by	BJS	Date	February 2005
			SM. 4 of 22



Saved 11-14-2006 1:25:40 PM by JLS
 Plot Scale 1:100 11-14-2006 1:30:50 PM by JLS
 C:\2005\05060\000\05060-00-CRNR-REVISED-11.APR06

N.W. Corner SW 1/4, Sec. 28
Twp. 26S, R-1-W
Found 3/4" Iron Pipe
w/ LS875 Cop-Moehring

S.W. Cor. SW 1/4,
Sec. 28, Twp. 26S, R-1-W
Found 3/4" Pipe

S.E. Corner SW 1/4,
Sec. 28, Twp. 26S, R-1-W
Found 5/8" Rebar