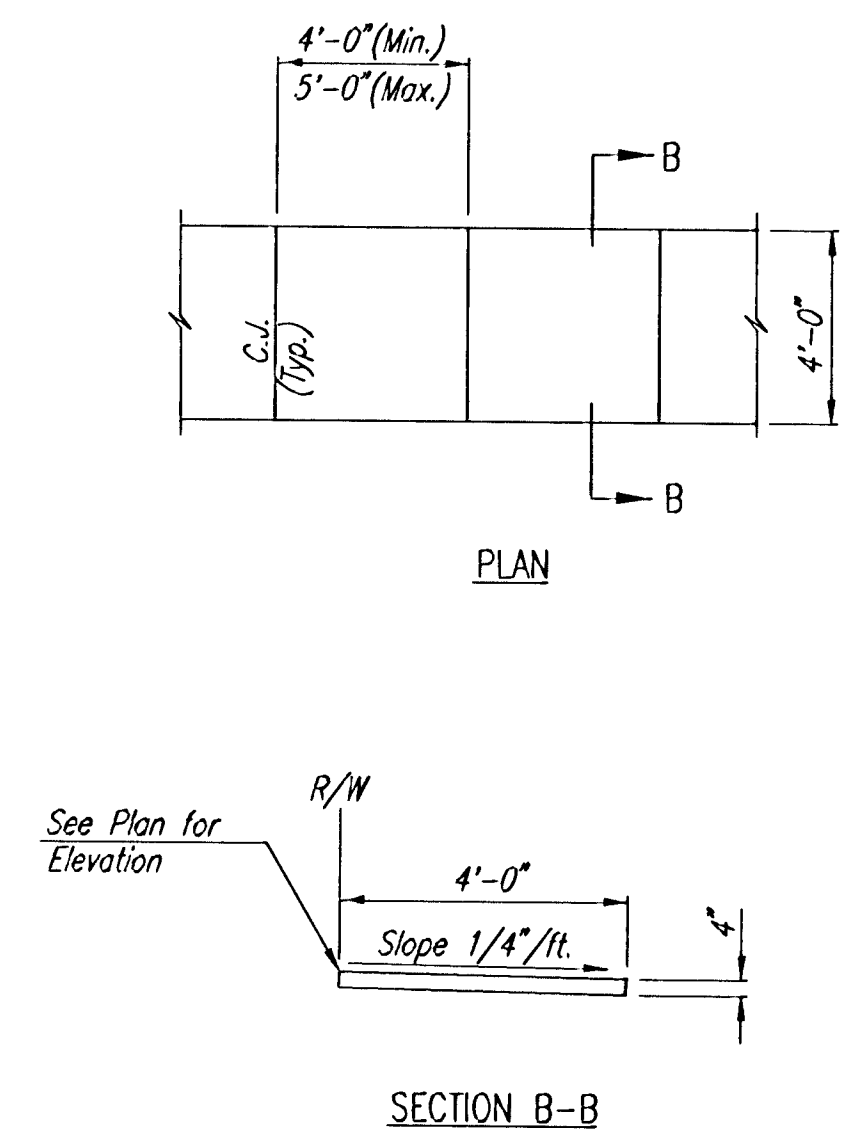
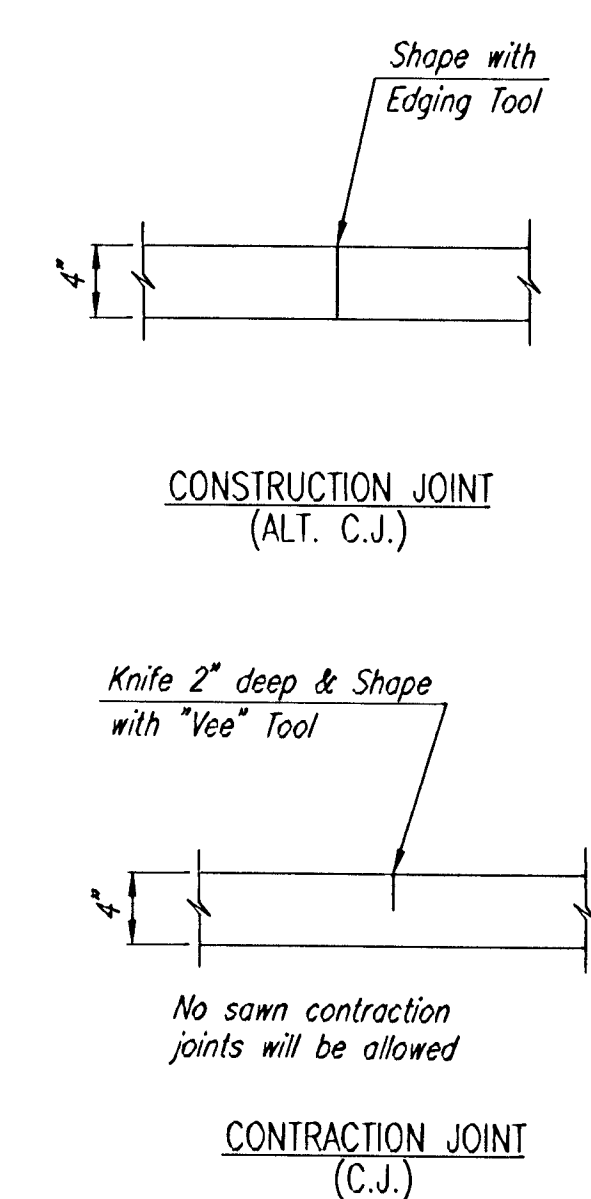


**COMPACTED FILL DETAIL
WHERE SIDEWALK IS CONSTRUCTED**
(See Plan Sheets for Locations)



SECTION B-B

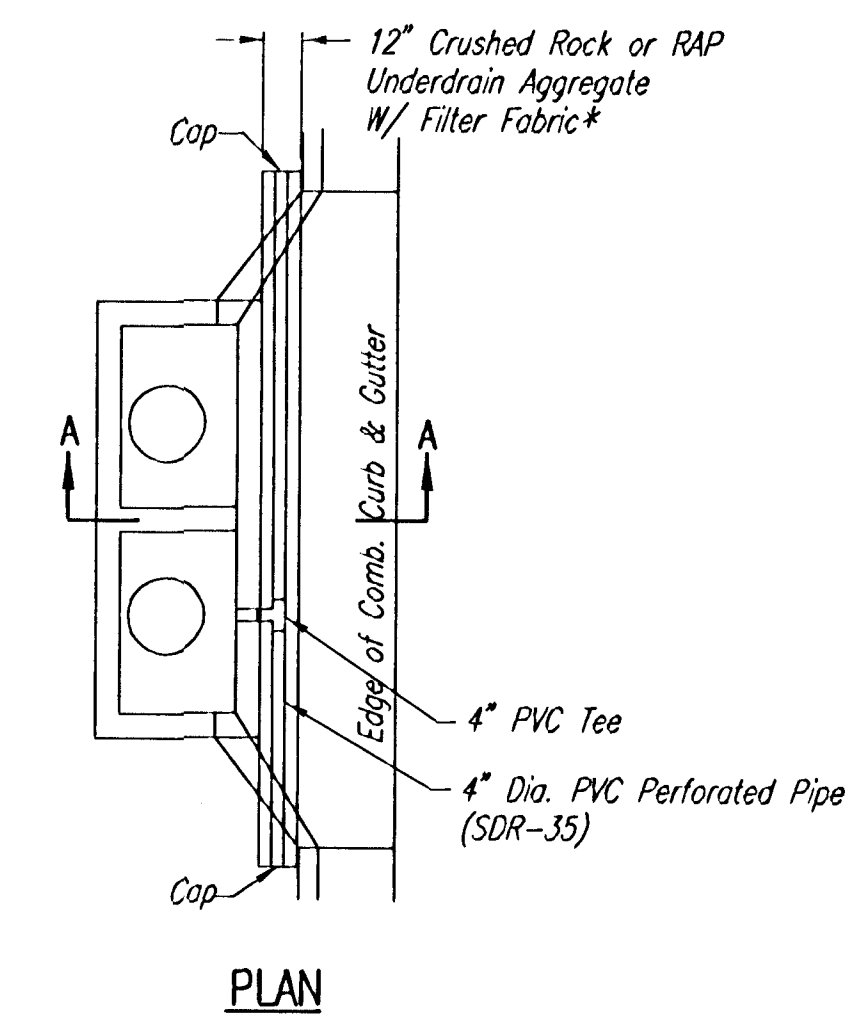


CONSTRUCTION JOINT
(ALT. C.J.)

Knife 2" deep & Shape
with "Vee" Tool

No sawn contraction
joints will be allowed

CONTRACTION JOINT
(C.J.)



PLAN

* UNDERDRAIN AGGREGATE
PERCENT OF AGGREGATE RETAINED

1"	0
3/4"	0-10
3/8"	45-80
#4	90-100
#8	95-100

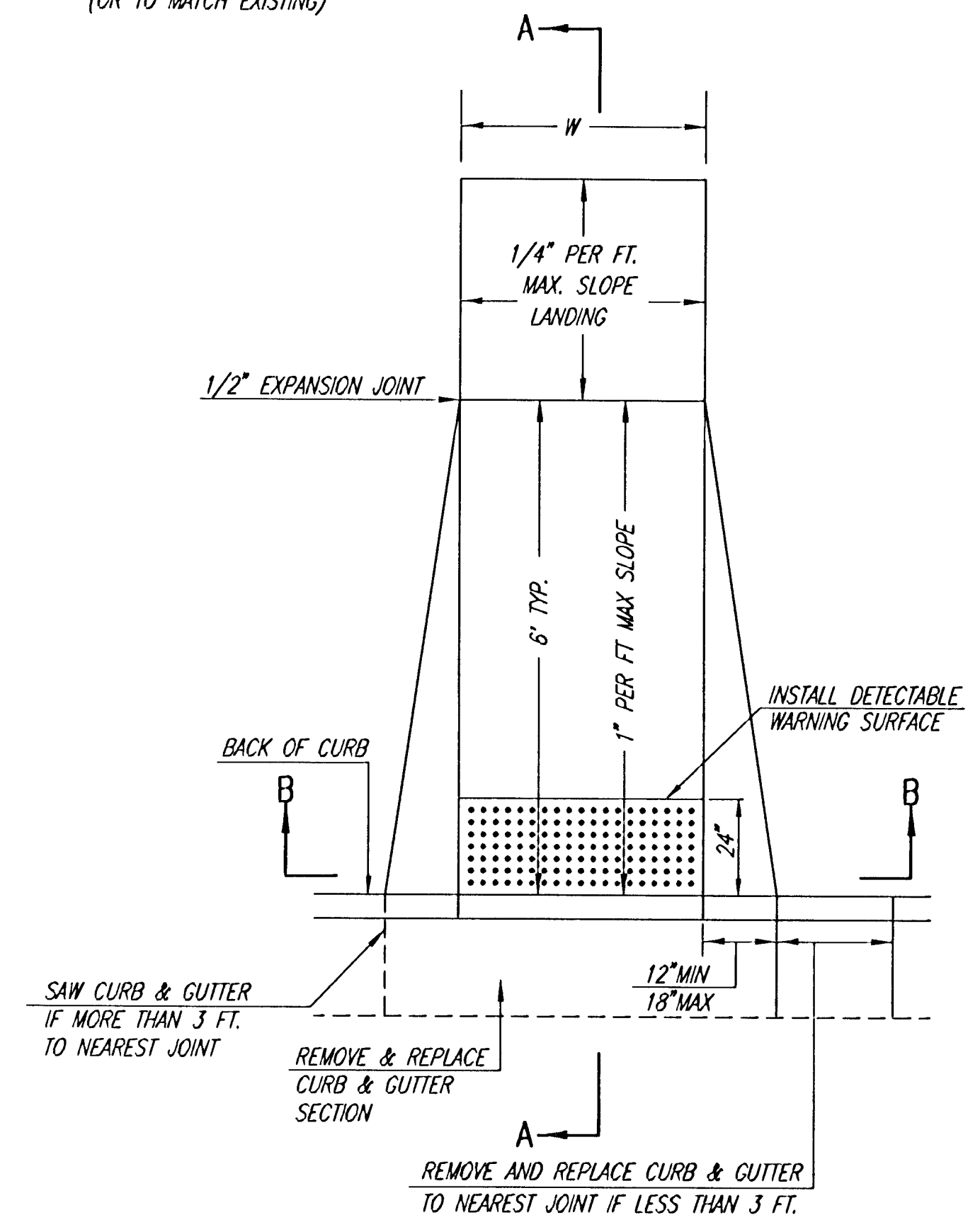
ROCK QUALITY SHALL CONFORM TO THE REQUIREMENTS SPECIFIED BY THE KDOT 1990 EDITION STANDARD SPECIFICATION SUBSECTION 1102 FOR DURABILITY CLASS 1.

PAVEMENT UNDERDRAIN LOCATIONS

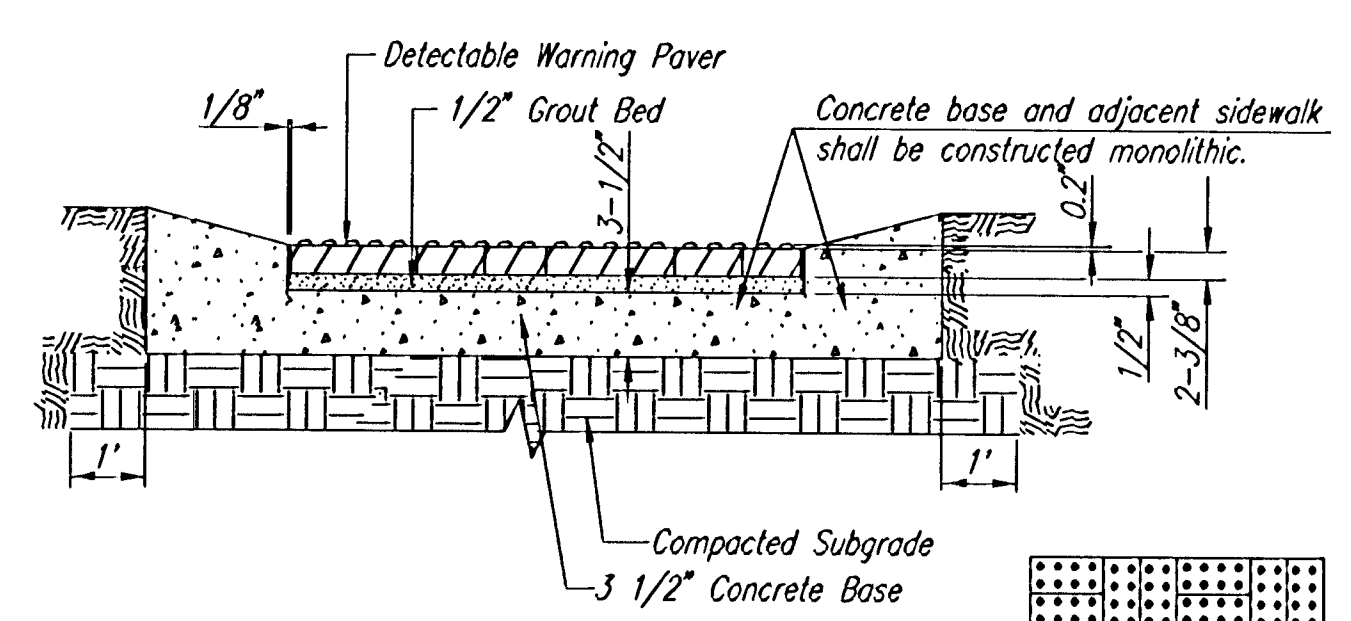
STREET	STATION	SIDE
PALMETTO	80+45.26	LT. & RT.

4" WALK DETAILS

W= 4'0" FOR STANDARD RAMP
W= 5'0" FOR RAMPS AT SCHOOL CROSSWALKS
(OR TO MATCH EXISTING)



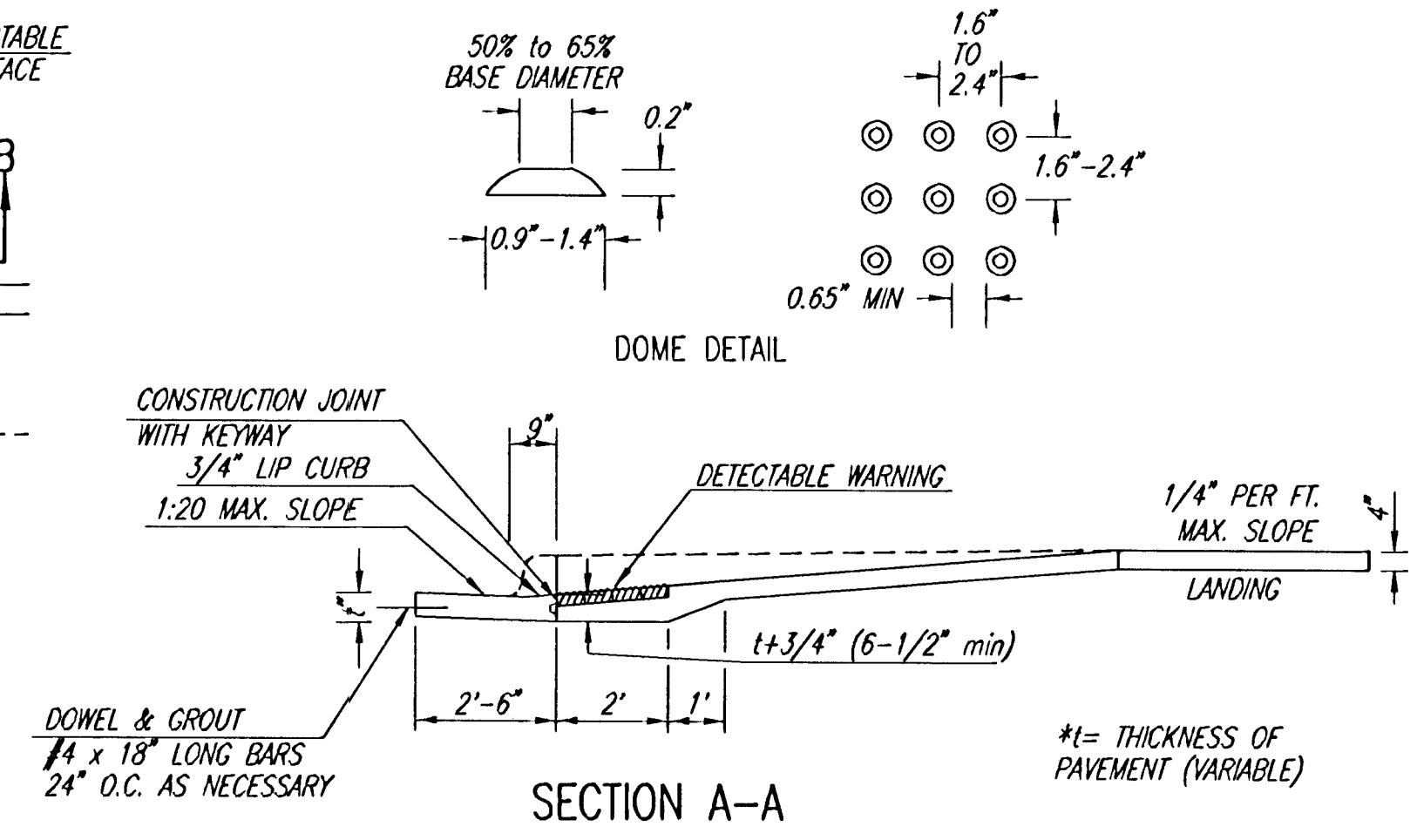
(TYPE A)
STANDARD WHEELCHAIR RAMP
WITH DETECTABLE WARNING
CONSTRUCTION DETAIL FOR STREETS
WITH COMBINED CURB & GUTTER



TYPICAL SECTION DETECTABLE WARNING PAVER

NOTE: RAMPS TO COMPLY WITH LATEST ADAAG GUIDELINES. PAVESTONE DETECTABLE WARNING PAVERS (OR AN APPROVED EQUAL) SHALL BE USED IN ALL WHEELCHAIR RAMPS. THE RED PAVER SHALL BE INSTALLED USING A BASKET WEAVE/PARQUET PATTERN. OTHER PATTERNS MAY BE USED WITH APPROVAL OF ENGINEER. SAND FILL JOINTS. ALIGN DOMES IN THE DIRECTION OF PEDESTRIAN TRAVEL.

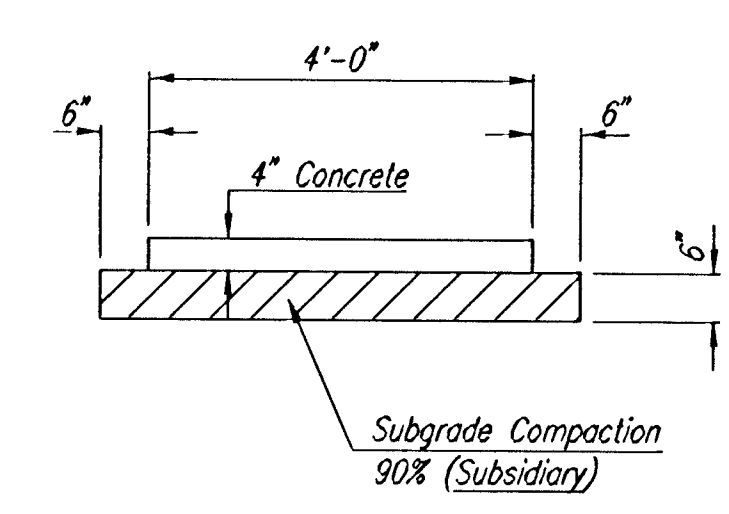
SECTION B-B



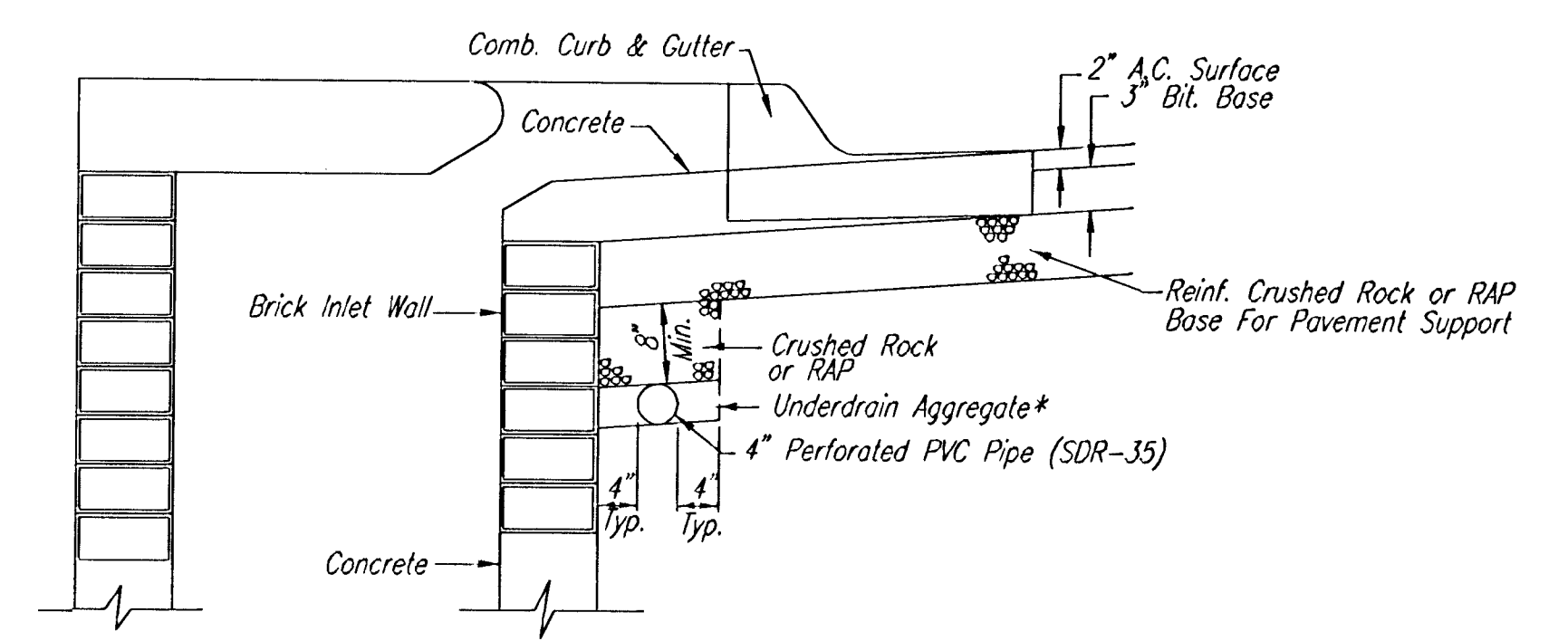
SECTION A-A

TYPICAL WHEELCHAIR RAMP DETAILS

AUGUST 4, 2003



TYPICAL SIDEWALK SECTION



SECTION A-A

PAVEMENT UNDERDRAIN DETAIL

NOTE: PLACE 4" PVC PERFORATED PIPE AT ALL DRAINAGE SUMP LOCATIONS.

COST OF UNDERDRAIN SYSTEM TO BE INCIDENTAL TO THE REINFORCED CRUSHED ROCK OR REINFORCED RECYCLED ASPHALT PAVEMENT (RAP) BASE.

INLET TYPE MAY VARY FROM THAT SHOWN.

DSNR: BLB OPER: BLS SCALE: 1"=10.00
C:\2005\05060\000\05060-000-C-MISC011 06-13-2005 03:19:28 pm

[Signature]
02 017 06
RECORD DRAWING

Revision		By	Date
AVALON PARK-PHASE 5			
MISCELLANEOUS PAVING DETAILS			
JAMES L. ARMOUR, P.E.-CITY ENGINEER CITY OF WICHITA PROJECT NO. 472-83839			
Professional Engineering Consultants, P.A. 303 S. TOPEKA • WICHITA, KANSAS 67202 316-262-2691 • FAX 316-262-3003			
Designed by	BDB, BLB	Job No.	35-05060-000
Drawn by	BJS	Date	February 2005
		Sh.	9 of 22