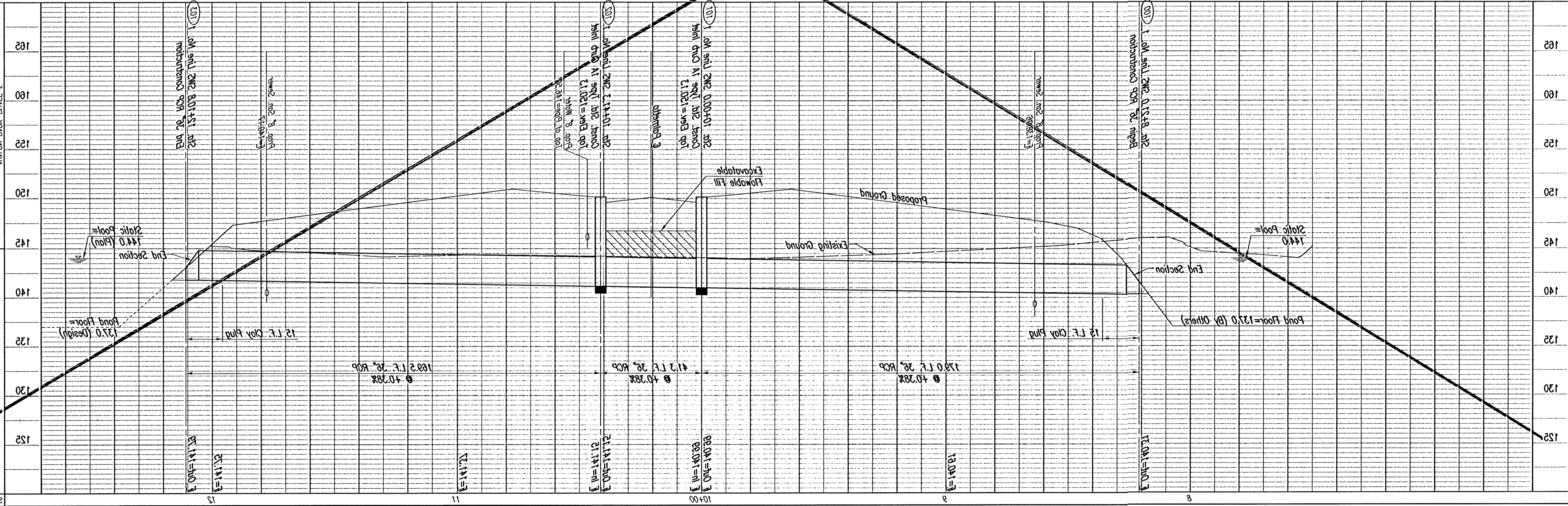


WMS LINE NO. 1
 WAGON BRK-BRGE 2

James R. Boush
 Professional Engineer
 No. 10888
 State of Kansas
 Mechanical Engineering
 Exp. 12-31-2022



COORDINATE LIST

POINT	NORTH	EAST
100	11,720.6791	15,003.6389
101	11,541.8445	15,004.9494
102	11,500.2827	15,002.2528
103	11,370.8371	15,006.4947

SEE SHEET NO. 2 FOR PLAT COORDINATES
 (100) = COORDINATE POINT NO.

NOTE:
 CONTRACTOR SHALL CONSTRUCT 15 L.F. CLAY BACKFILL (P.U.) AT END OF RCP. NO GRANULAR BACKFILL SHALL BE ALLOWED IN THIS AREA. THE TOP 6\"/>

SEE CHANGE ORDER
 24. NO. 3 of 4

See Title Sheet for Construction Schedule Sequence Note

Install 37 L.F. Excavatable Flowable Fill to Elev. 146.75

Excavate Only as Necessary for Installation of RCP and Riprap. At Contractor's Option, timing of riprap placement may be coordinated with SMD #284 Contractor.

Sta. 13+10.8 SWS Line No. 1
 End 36\"/>

Sta. 10+41.3 SWS Line No. 1 =
 @ Palmetto Sta. 80+42.28, 20.67, RR Const. Std. Type 1A Curb Inlet
 L=2'-0\", W=3'-0\",
 Top Elev.=120.13
 Install 189.2 L.F. 36\"/>

Sta. 10+00.0 SWS Line No. 1 =
 @ Palmetto Sta. 80+42.28, 20.67, L.L. Const. Std. Type 1A Curb Inlet
 L=2'-0\", W=3'-0\",
 Top Elev.=120.13
 Install 41.3 L.F. 36\"/>

Sta. 8+51.0 SWS Line No. 1
 Begin 36\"/>

END #284 (By Others)
 (CON. Proj. No. 488-84017)
 Static Pool=144.0
 (Including End Section)
 DWS#00=146.8