

PLAN  
 CHECKED  
 BY  
 DATE

PROFILE  
 CHECKED  
 BY  
 DATE

Sheet 05-28-2005 10:30:02 AM by ILS  
 Plot Scale 1:20 02-22-2006 10:18:37 AM by ILS  
 C:\2005\05257\Change Order\05257-C-SWSLINE1(05060).Change Order

SWD #264 (By Others)  
 (COW Proj. No. 468-84011)  
 Static Pool=144.0  
 DWS<sub>100</sub>=146.6

Sta. 8+21.0 SWS Line No. 1  
 Begin 36" RCP Construction  
 Install 179.0 L.F. 36" RCP (S)  
 (Including End Section)

Sta. 10+00.0 SWS Line No. 1=  
 @ Palmetto Sta. 80+45.26, 20.67' Lt.  
 Const. Std. Type 1A Curb Inlet  
 L=5'-0", W=3'-0"  
 Top Elev.=150.13  
 Install 41.3 L.F. 36" RCP (S)  
 See Sheet No. 11.

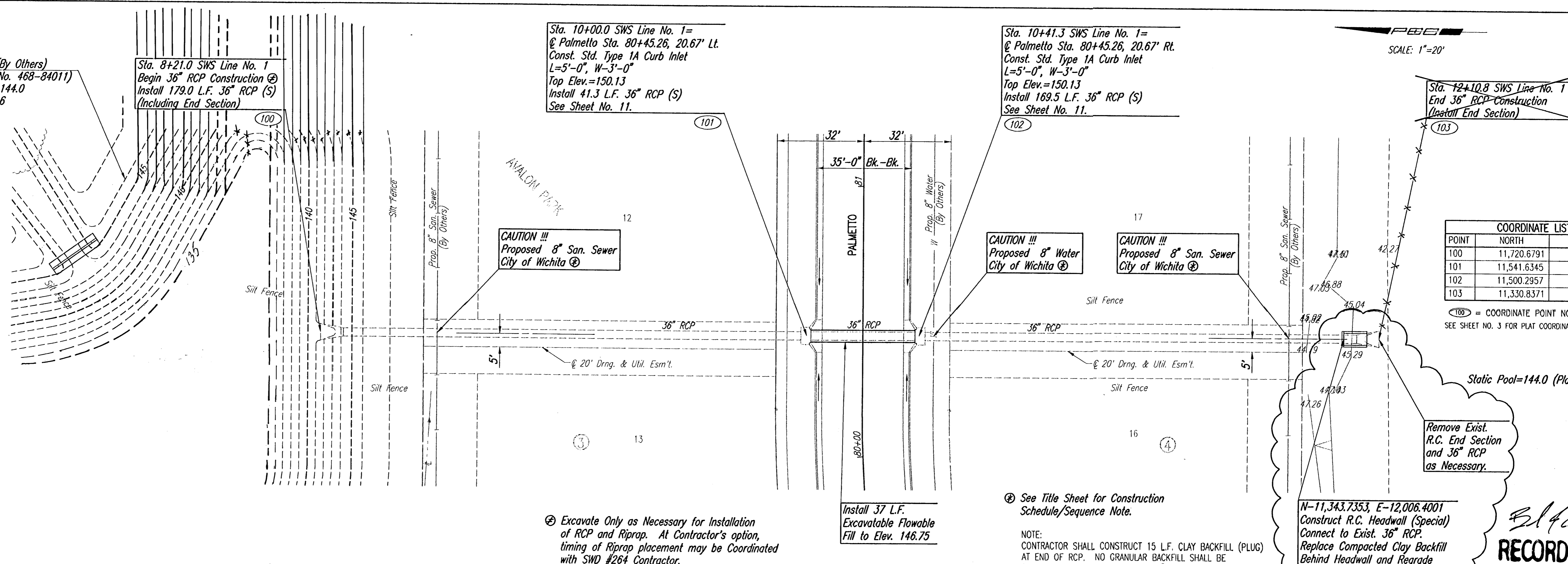
Sta. 10+41.3 SWS Line No. 1=  
 @ Palmetto Sta. 80+45.26, 20.67' Rt.  
 Const. Std. Type 1A Curb Inlet  
 L=5'-0", W=3'-0"  
 Top Elev.=150.13  
 Install 169.5 L.F. 36" RCP (S)  
 See Sheet No. 11.

Sta. 12+10.8 SWS Line No. 1  
 End 36" RCP Construction  
 (Unatall End Section)

SCALE: 1"=20'

COORDINATE LIST		
POINT	NORTH	EAST
100	11,720.6791	12,003.6369
101	11,541.6345	12,004.9494
102	11,500.2957	12,005.2525
103	11,330.8371	12,006.4947

100 = COORDINATE POINT NO.  
 SEE SHEET NO. 3 FOR PLAT COORDINATES



⊕ Excavate Only as Necessary for Installation of RCP and Riprap. At Contractor's option, timing of Riprap placement may be Coordinated with SWD #264 Contractor.

Install 37 L.F. Excavatable Flowable Fill to Elev. 146.75

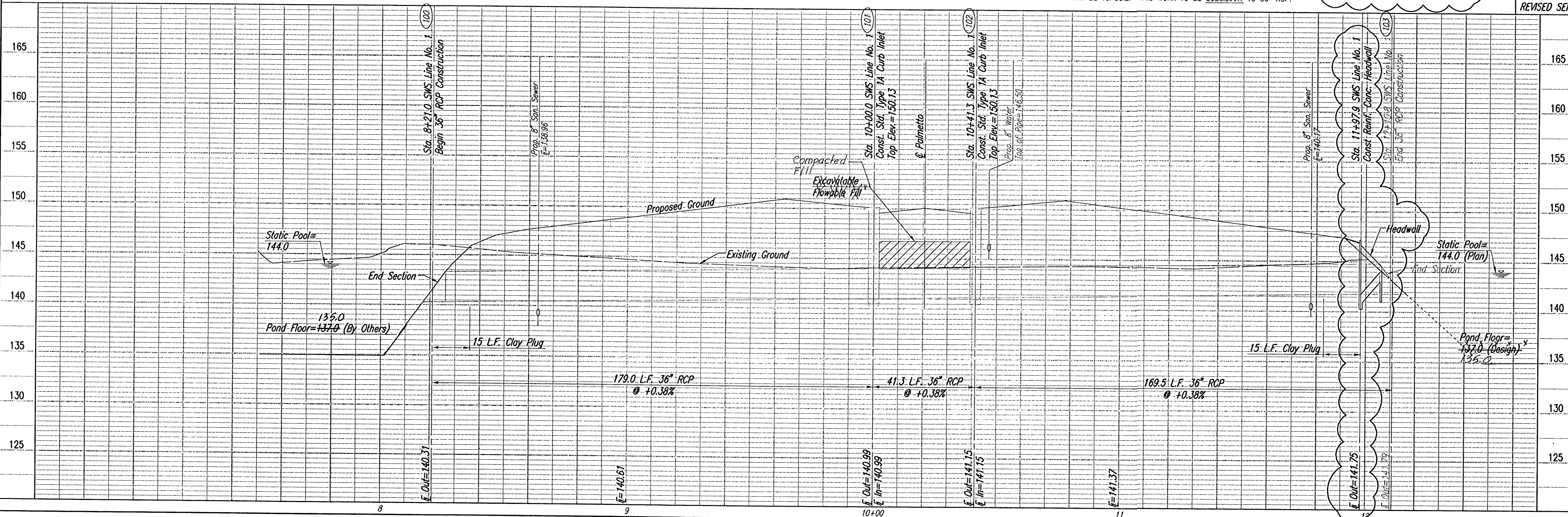
⊕ See Title Sheet for Construction Schedule/Sequence Note.

NOTE:  
 CONTRACTOR SHALL CONSTRUCT 15 L.F. CLAY BACKFILL (PLUG) AT END OF RCP. NO GRANULAR BACKFILL SHALL BE ALLOWED IN THIS AREA. THE TOP 6" OF FILL ABOVE STATIC POOL MAY BE TOPSOIL. THIS WORK TO BE SUBSIDIARY TO 36" RCP.

N-11,343.7353, E-12,006.4001  
 Construct R.C. Headwall (Special) Connect to Exist. 36" RCP.  
 Replace Compacted Clay Backfill Behind Headwall and Regrade Pond Bank to Original Condition.

*B.L.B.*  
 02.09.06  
**RECORD DRAWING**

REVISED SEPTEMBER 15, 2005



Professional Engineering Consultants, P.A.  
 303 S. TORREY, WICHITA, KANSAS 67202  
 316-262-2691 • FAX 316-262-8003

Designed By: BDB, BLB  
 Job No.: 35-05060-000  
 Date: February 2005

Drawn By: BUS  
 Date: February 2005

Sheet 10R of 22

AVALON PARK 3RD  
 STORM WATER DRAIN NO. 264  
**SWS LINE NO. 1**  
 JAMES L. ARMOUR, P.E. - CITY ENGINEER  
 CITY OF WICHITA, PROJECT NO. 468-84011