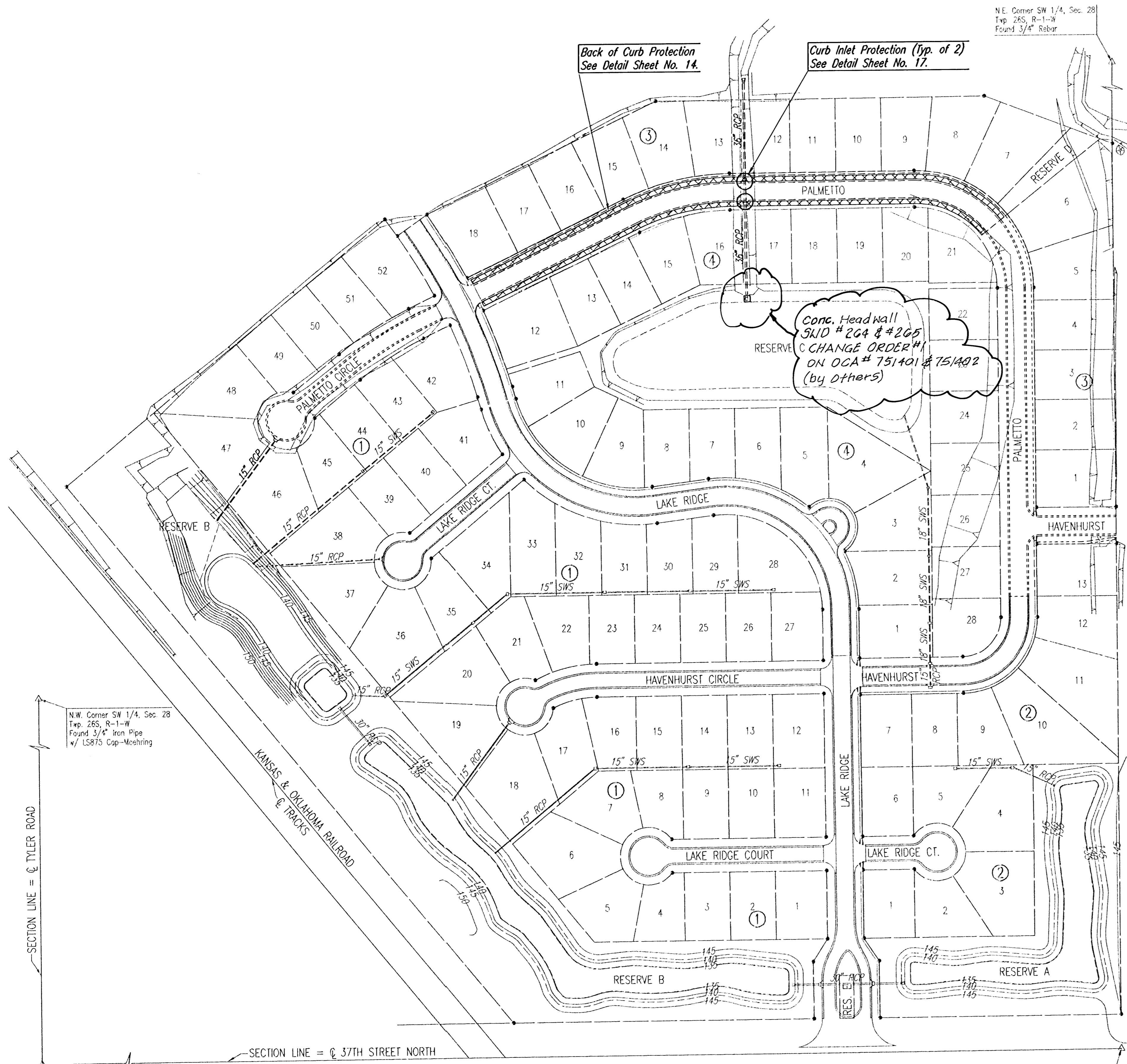


DSNR: BLB OPER_BLS SCALE: 1"=100.00
 Q:\2005\05060\001\05060-000-C-EROSIONCONTROL 06-13-2005 03:22:00 pm



N.E. Corner SW 1/4, Sec. 28
 Twp. 26S, R-1-W
 Found 3/4" Rebar

Back of Curb Protection
 See Detail Sheet No. 14.

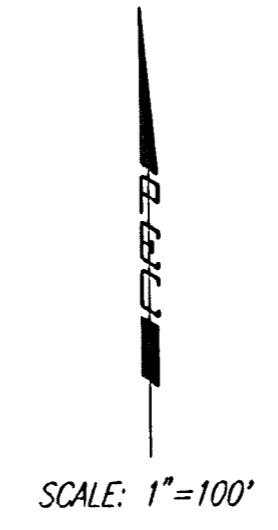
Curb Inlet Protection (Typ. of 2)
 See Detail Sheet No. 17.

Conc. Headwall
 SKID # 264 & #265
 CHANGE ORDER #1
 ON OCA # 751401 & 751402
 (by Others)

N.W. Corner SW 1/4, Sec. 28
 Twp. 26S, R-1-W
 Found 3/4" Iron Pipe
 w/ 1.5875 Cap-Meeting

S.W. Cor SW 1/4,
 Sec. 28, Twp. 26S, R-1-W
 Found 3/4" Pipe

S.E. Corner SW 1/4,
 Sec. 28, Twp. 26S, R-1-W
 Found 5/8" Rebar



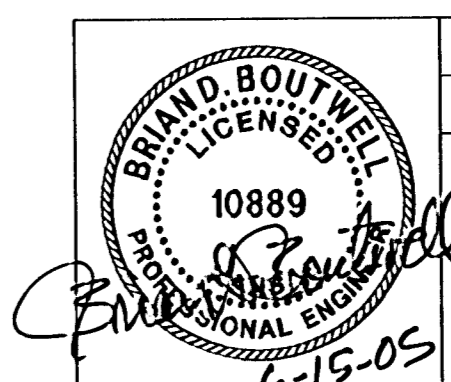
GENERAL NOTES

1. THE EROSION CONTROL DEVICES SHOWN ON THIS SHEET ARE CONSIDERED MINIMUM STANDARDS. WHENEVER SEDIMENT ENTERS THE STREETS, STORM SEWERS, DITCHES, OR PONDS, CONTRACTOR WILL INSTALL ADDITIONAL DEVICES, AS NEEDED, TO CORRECT THE PROBLEM.
2. THE EROSION CONTROL DEVICES SHOWN HEREON MUST BE IN PLACE AT ALL TIMES DURING CONSTRUCTION UNTIL SUCH TIME AS THE SITE IS REESTABLISHED WITH PAVING OR GRASS. TEMPORARY OR PERMANENT SEED AND MULCH WILL BE INSTALLED WHEN EARTHWORK ACTIVITIES CEASE IN AN AREA FOR 14 DAYS OR MORE.
3. BACK OF CURB PROTECTION: AS SHOWN ON CITY STANDARD DETAILS. THESE DEVICES MUST REMAIN IN PLACE UNTIL THE AREA BETWEEN THE CURB AND RIGHT-OF-WAY LINE HAS BEEN PERMANENTLY STABILIZED.
4. ANY MUD INADVERTENTLY TRACKED ONTO ANY STREET WILL BE CLEANED UP BY THE CONTRACTOR AT THE END OF EACH DAY'S WORK.
5. CONTRACTOR TO FURNISH A TRUCK WASH-OUT PIT TO BE PLACED AT A CONVENIENT AND OBVIOUS LOCATION THAT DOES NOT CONFLICT WITH CONSTRUCTION. CONTRACTOR SHALL CLEAN OUT AND BACKFILL PIT PRIOR TO FINAL INSPECTION.

LEGEND

- Curb Inlet Protection
- ▨ Back of Curb Protection w/Permanent Seeding

B. M. E. W.
 02 Oct 06
RECORD DRAWING



No.	Revision	By	Date
	AVALON PARK-PHASE 5		
EROSION CONTROL (BMP) PLAN			
JAMES L. ARMOUR, P.E.-CITY ENGINEER CITY OF WICHITA PROJECT NO. 472-83839			
Professional Engineering Consultants, P.A. 303 S. TOPEKA • WICHITA, KANSAS 67202 316-262-2691 • FAX 316-262-3003			
Designed by	BDB, BLB	Job No.	35-05060-000
Drawn by	BJS	Date	February 2005
			Sht. 13 of 22