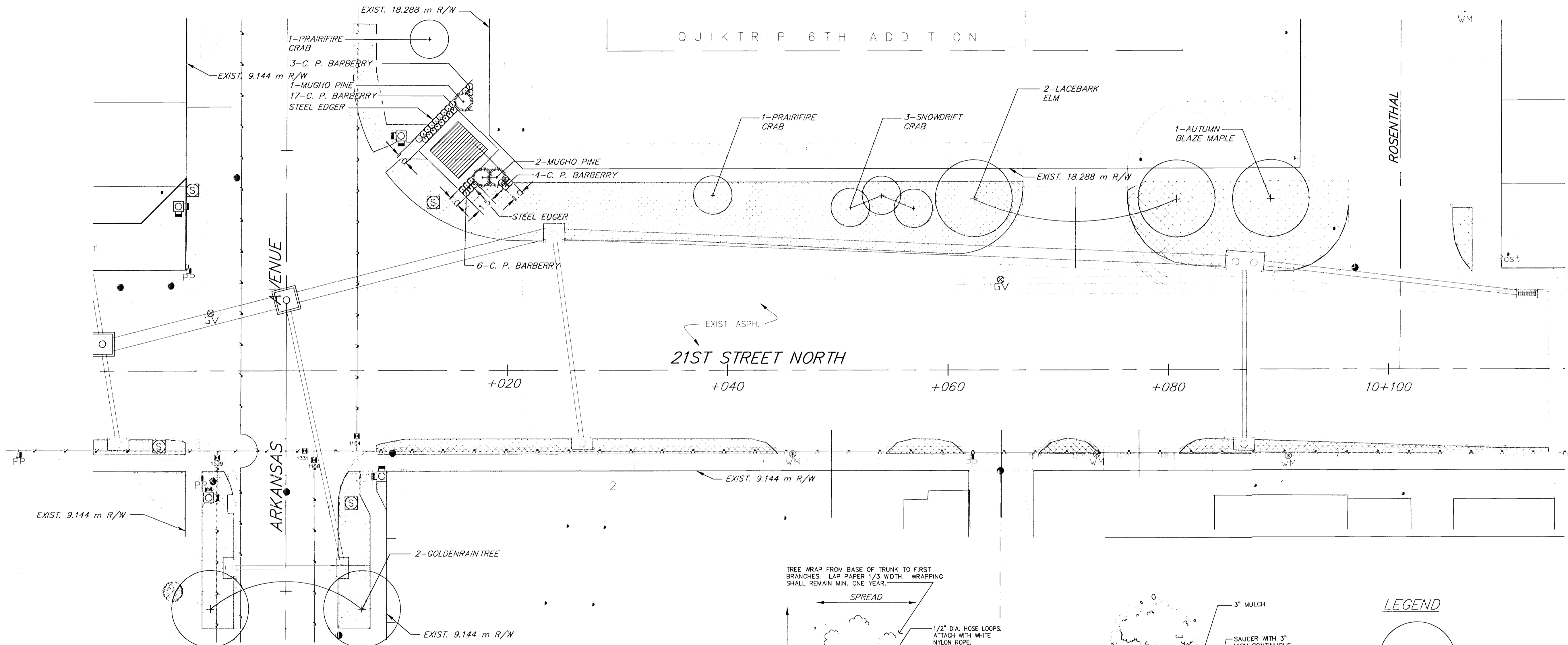


FHWA REG. NO.	STATE	PROJECT NO.	YEAR	SHEET NUMBER	TOTAL SHEETS
7	KANSAS		2002	C3	3

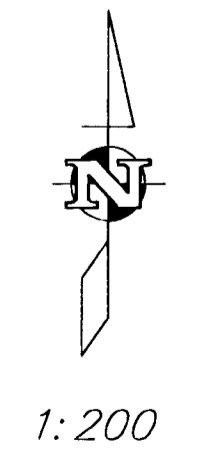
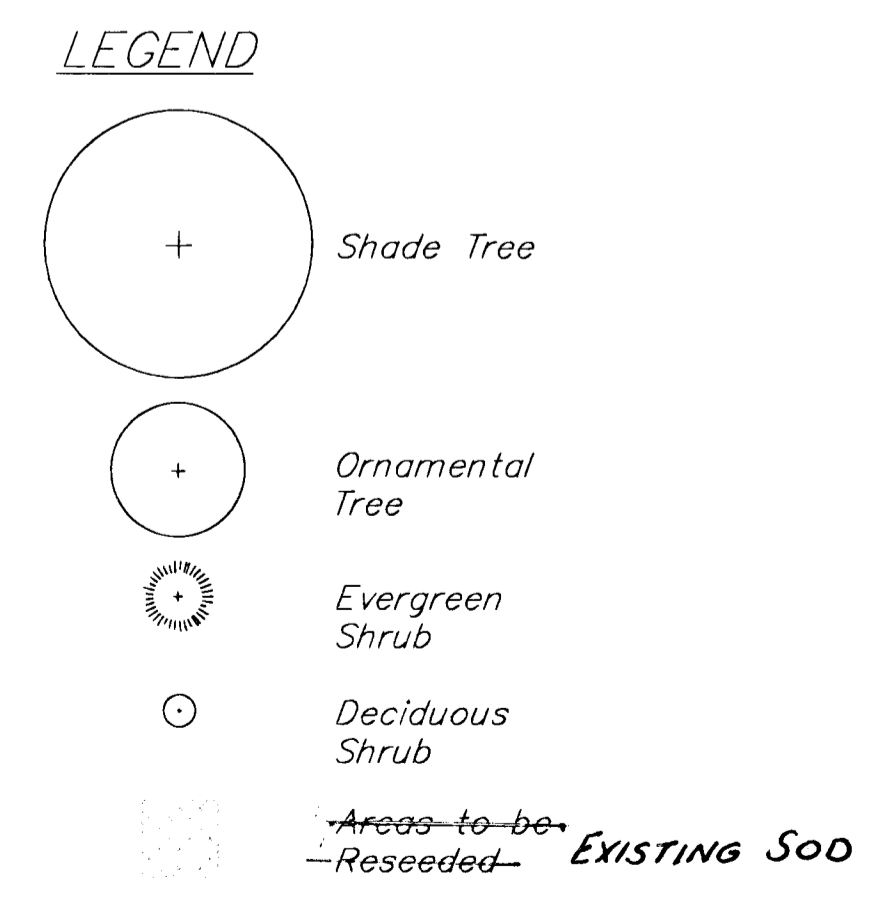
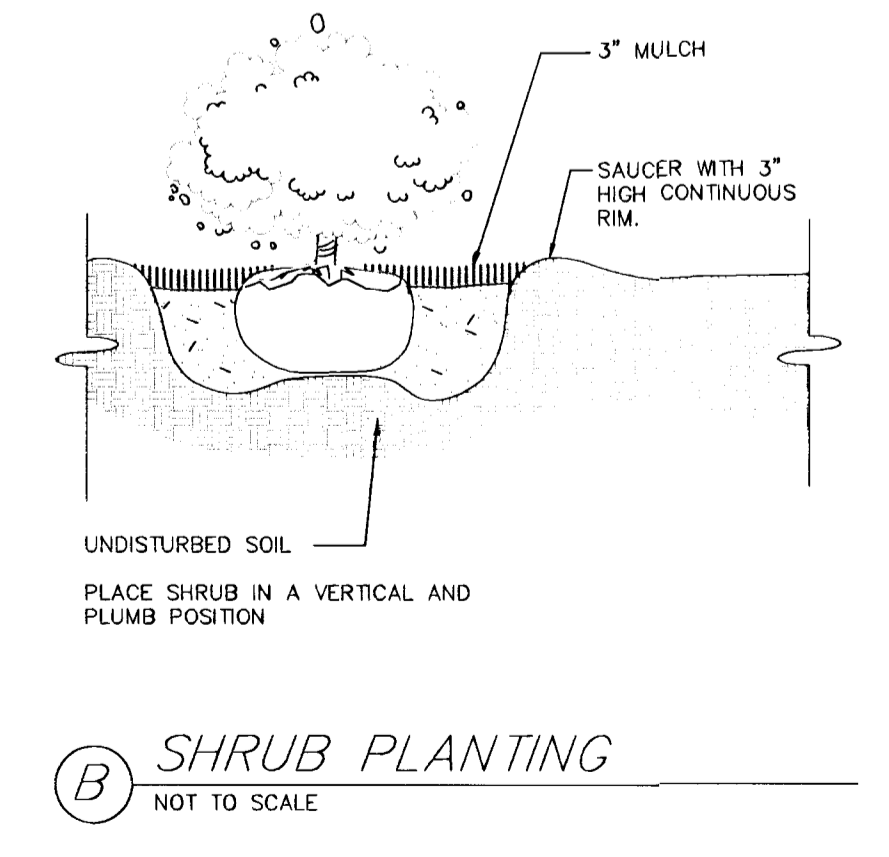
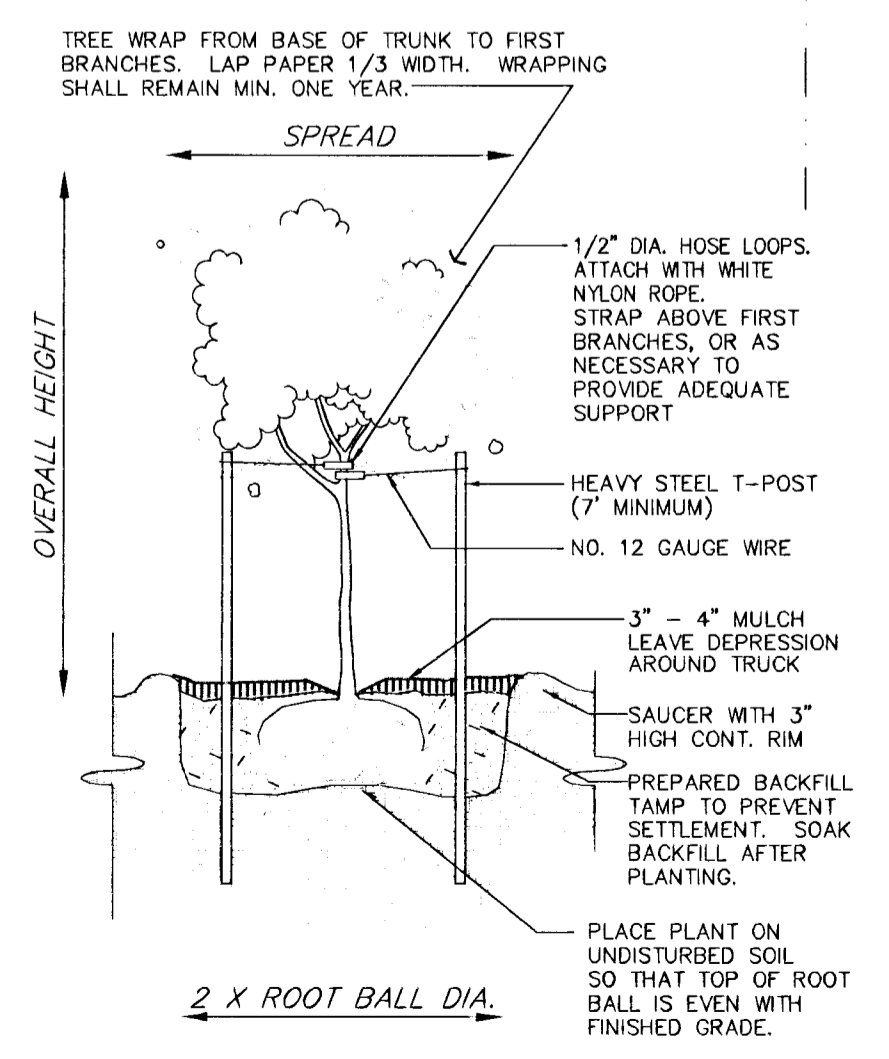
GENERAL NOTES

- All work shall be done in accordance with the city of Wichita's Landscape Ordinance.
- Landscape contractor shall provide all labor, material and service necessary to furnish and install plantings as specified herein and as shown on the plans. Contractor will completely guarantee all work for a period of one year at the date of acceptance. Contractor will make all replacements promptly with direction of owner.
- No material substitutions shall be made without architect's approval. Alternate material of similar size and character may be considered if specified plant materials cannot be obtained. Architect reserves the right to revise plant schedule as deemed necessary.
- Quantities of materials shown on the landscape plan take precedence over quantities shown on the plant schedule. Landscape contractor shall be responsible for verifying all quantities shown on the landscape plan.
- Report any discrepancies on the planting plan to the architect, prior to purchasing materials or starting construction.
- Steel edger by "Prosteel, Inc." Edger to be 10 gauge (1/8" x 4" High) and painted green. Install as per manufacturer's recommendations. Top of edger to align w/ top of sidewalk where occurs. Grade to be 1" below top of edger on lawn side.
- All trees with broken leaders leaders will not be acceptable.
- Consult architect or his qualified representative for tagging acceptable tree stock at the nursery or stock in the growing field prior to digging.
- All tree locations are to be staked for approval prior to planting operations.
- Tree branching height for shade trees are to be (6') six feet +/-.
- ~~Seed for lawn areas to be TOP QUALITY FINE-BLADE FESCUE BLEND-LOCALLY GROWN.~~



PLANT SCHEDULE

QTY.	COMMON NAME	BOTANICAL NAME	SIZE	COND.
SHADE TREES				
2	LACEBARK ELM	<i>Qercus acutissima</i>	2" CAL.	B & B
2	AUTUMN BLAZE MAPLE	<i>Acer x freemanii</i>	2"	B & B
ORNAMENTAL TREES				
4	PRAIRIFIRE CRAB	<i>Malus 'Prairifire'</i>	1" CAL.	B & B
3	SNOWDRIFT CRAB	<i>Malus 'Snowdrift'</i>	1"	B & B
2	GOLDENRAINTREE	<i>Koelreuteria paniculata</i>	1"	B & B
SHRUBS				
3	DWF. MUGHO PINE	<i>Pinus mughu mughus</i>	2 GAL.	CONT.
30	CRIMSON PYGMY BARBERRY	<i>Berberis thunbergi atropurpurea nana</i>	2 GAL.	CONT.
LAWN				
-871-1-S.M.	-FESCUE-GRASS-	----	----	-SEED-



PROJECT NUMBER 472-83184	AM. NO. 99147	21ST AND ARKANSAS LANDSCAPE PLAN CITY OF WICHITA	SHEET C3
DESIGN bh	DRAWN bh		FILE Lscape2

SCALE: 1:200