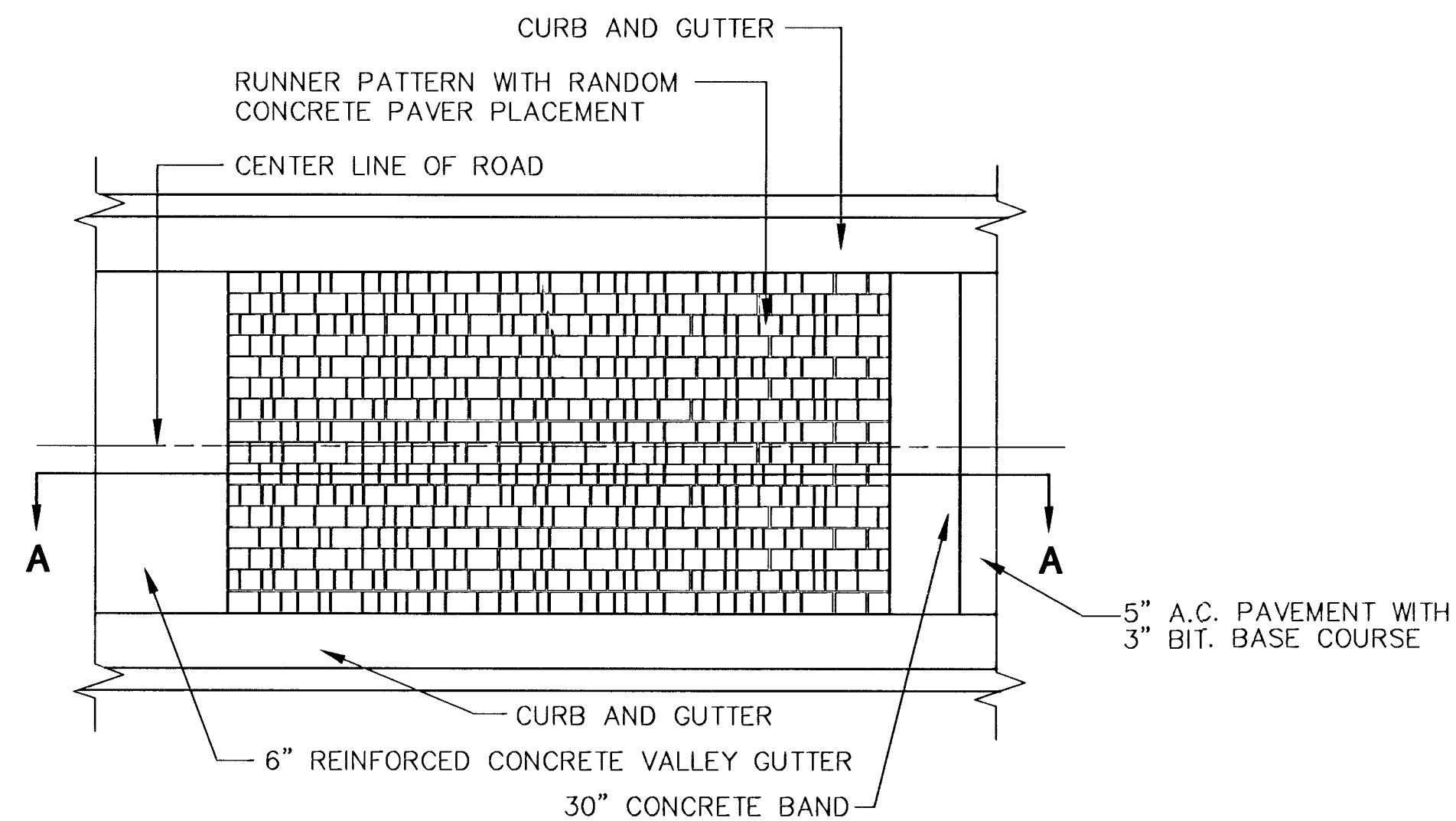


SECTION A-A

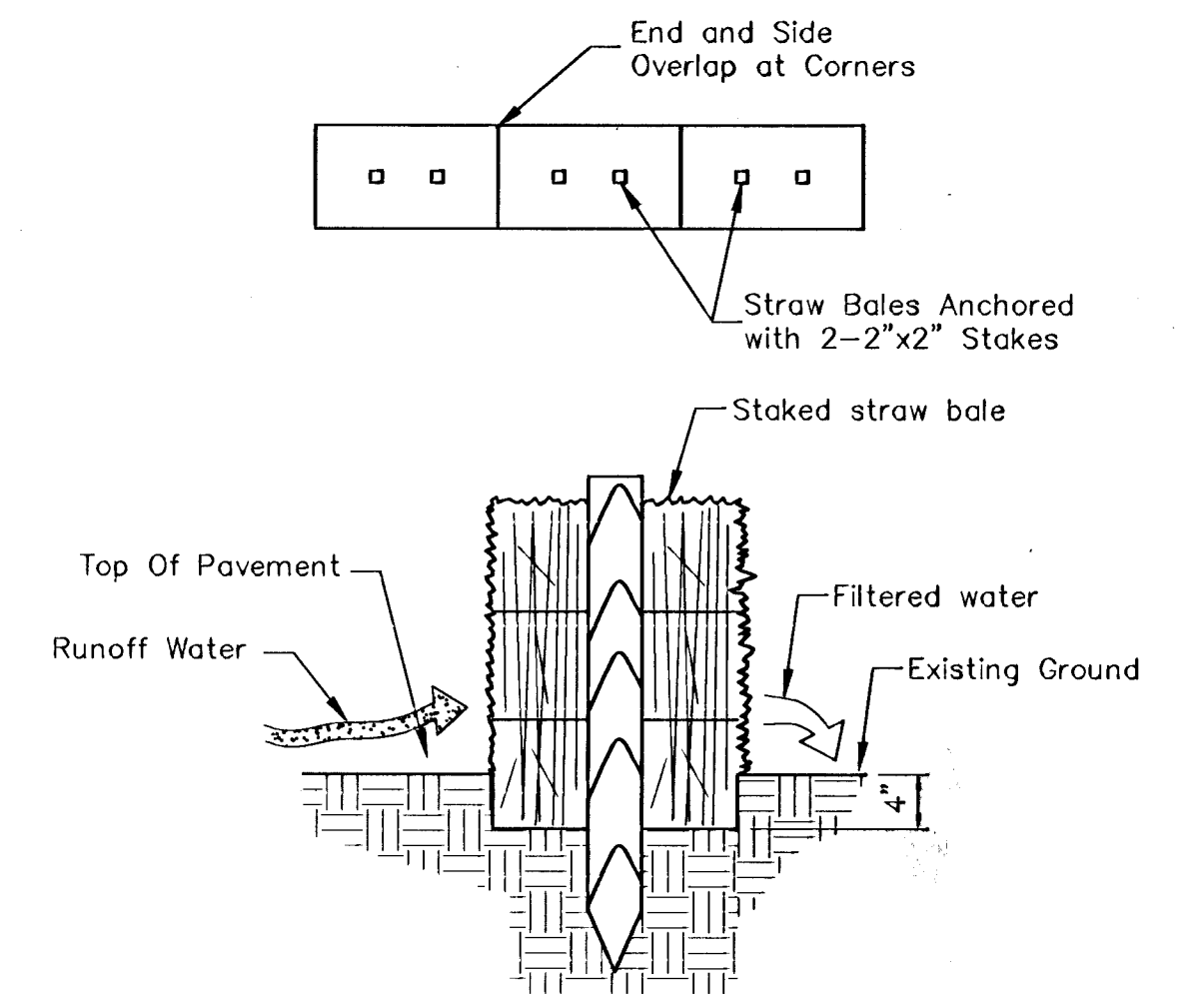


PAVING PLAN A

NOTES:

1. CONCRETE UNIT PAVER SHALL BE 2-3/8" MIN. THICKNESS AND MEET OR EXCEED ASTM C-936-82. (ALT.: CLAY BRICKS SHALL BE REPPRESSED CHAMFERED STREET PAVERS, DESIGNED FOR HEAVY VEHICLES. SIZE SHALL BE 4"x8"x2 5/8" EXCLUDING CHAMFER, COMPRESSIVE STRENGTH 8,000 PSI MINIMUM, AND ABSORPTION 5% MAXIMUM). PAYMENT SHALL BE AT THE CONTRACT BID PRICE PER SQUARE YARD FOR "PAVING BRICK".
2. CONCRETE BASE COURSE SHALL BE BID AS "CONCRETE PAVEMENT (6" UNIFORM) (AE)". ADDITIONAL CONCRETE THICKNESS IN TRANSITION AND CONCRETE BAND SHALL BE SUBSIDIARY TO THE BID ITEM "CONCRETE PAVEMENT (6" UNIFORM) (AE)".
3. ADDITIONAL FORM WORK FOR CONSTRUCTION OF THE CONCRETE PAVER WILL BE SUBSIDIARY TO THE BID ITEM "PAVING BRICK".
4. SAND BEDDING SHALL MEET THE KDOT REQUIREMENTS FOR FINE AGGREGATE. AN UNCOMPACTED SAND LAYING COURSE SHALL BE SPREAD EVENLY OVER THE AREA TO BE PAVED AND THEN SCREEDED TO A LEVEL OF APPROXIMATELY 1" THICKNESS. ONCE SCREEDED AND LEVELED TO THE DESIRED ELEVATION, THE SAND LAYING COURSE SHALL NOT BE DISTURBED IN ANY WAY.
5. THE CONCRETE PAVERS SHALL BE INSTALLED IN A RUNNER PATTERN PARALLEL TO THE AXIS OF THE ROADWAY TRAFFIC FLOW. BLOCKS SHALL BE PLACED WITH THE CHAMFERED SIDE UP, AND JOINT SPACES KEPT UNIFORM APPROXIMATELY 1/8" THICK. THE GAPS AT THE EDGE OF THE PAVED SURFACE SHALL BE FILLED WITH PAVING BLOCKS CUT TO FIT. CUTTING SHALL BE ACCOMPLISHED TO LEAVE A CLEAN EDGE TOWARD THE TRAFFIC SURFACE, USING A MASONRY SAW. WHENEVER POSSIBLE, NO CUTS SHOULD RESULT WITH A PAVER LESS THAN ONE-THIRD OF ITS ORIGINAL DIMENSION. INDIVIDUAL PAVERS ARE TO BE PLACED RANDOMLY BY SIZE AND COLOR IN THE PATTERN STYLE MENTIONED ABOVE (REFER TO DETAIL "PAVING PLAN A").
6. PAVING BRICK SHALL BE VIBRATED TO THEIR FINAL LEVEL IN THE SAND LAYING COURSE BY TWO OR THREE PASSES OF A VIBRATING COMPACTOR CAPABLE OF 3000 TO 5000 POUNDS COMPACTION FORCE WITH THE SURFACE CLEAN AND JOINTS OPEN.
7. AFTER VIBRATION, CLEAN CONCRETE SAND SHALL BE SPREAD OVER THE PAVING STONE SURFACE, ALLOWED TO DRY, AND VIBRATED INTO THE JOINTS WITH ADDITIONAL PASSES OF THE PLATE VIBRATOR SO AS TO COMPLETELY FILL THE JOINTS. A LIGHT COATING OF SAND SHALL BE SWEEPED OVER THE COMPLETED SURFACE AND LEFT TO WEATHER IN.
8. A SAND LAYER SHALL BE MAINTAINED OVER CONCRETE SURFACES DURING CONSTRUCTION, AND REMAIN FOR A MINIMUM THIRTY DAYS AFTER ASPHALT SURFACES HAVE BEEN COMPLETED.

CONCRETE PAVER SCHEDULE			
MANUFACTURER	STYLE	COLOR	% MIX
PAVESTONE	PLAZA STONE (TYPE 1)	SANDSTONE	10%
"	PLAZA STONE (TYPE 1)	PEWTER-BLEND	10%
"	PLAZA STONE (TYPE 2)	PEWTER-BLEND	20%
"	PLAZA STONE (TYPE 1)	TERRA-COTTA	30%
"	PLAZA STONE (TYPE 1)	TERRA-COTTA/CHARCOAL BLEND	15%
"	PLAZA STONE (TYPE 2)	TERRA-COTTA/CHARCOAL BLEND	15%



STRAW BALE SEDIMENT BARRIER

Note: Wedge loose straw between bales to prevent water from flowing between bales.

G:\CIVIL\96081\HALLMARK\PHASE2\PAVE\01123ED4.DWG



ROCKY CREEK ADDITION-HALLMARK PH 2
PROJECT NAME

PAVING BRICK & MISC. DETAILS
SHEET TITLE

GJA DESIGN BY: KKL DRAWN BY: GJA CHECKED BY:

JUNE 2001 DATE: 96081ED4 DRAWING NAME: 5 / 32 SHEET / OF