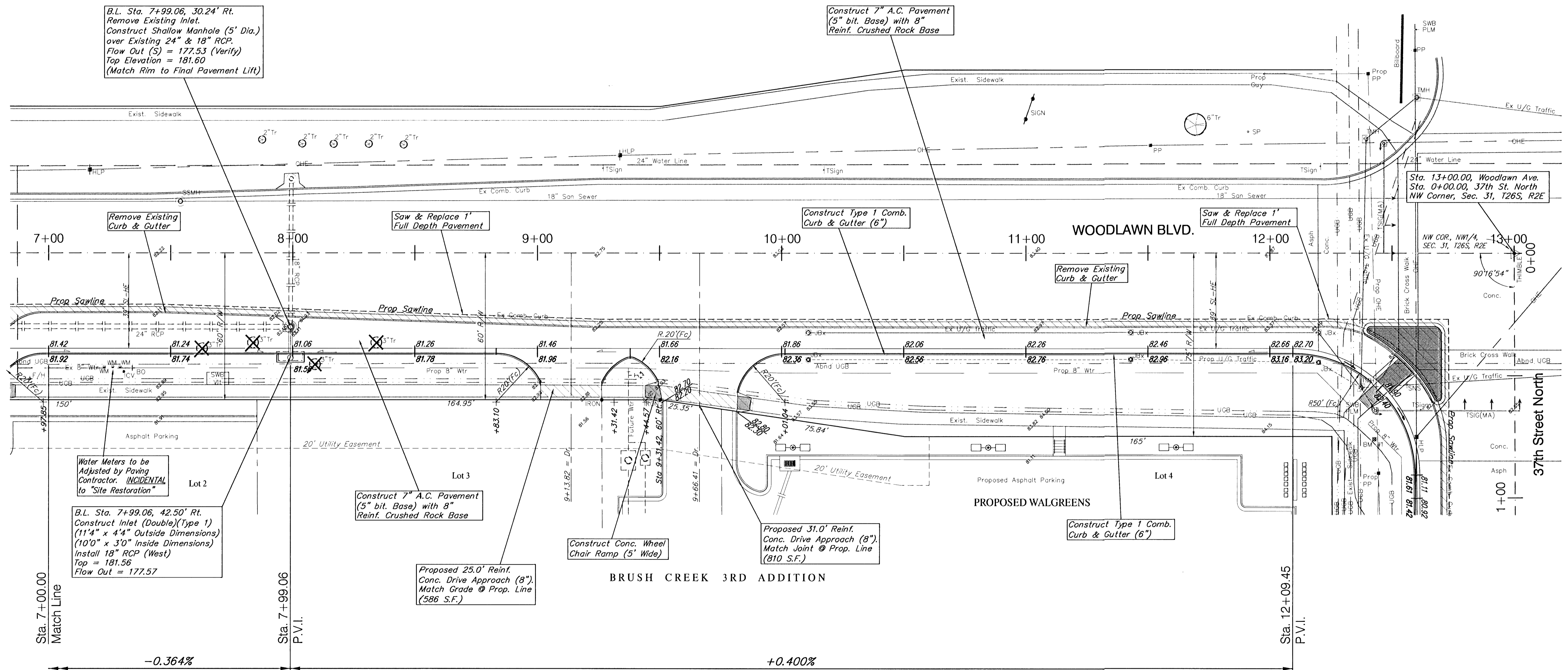


BENCHMARK:

BM #1 - City of Wichita Benchmark Disc -
Woodlawn and 37th Street North, S.E. Corner
if intersection 75.7' east & 56.3' south of
centerline, both.
Elev. = 183.04 (City Datum)



WHISPERING BROOK COMMERCIAL 2ND ADDITION



Water Meters to be Adjusted by Paving Contractor. **INCIDENTAL** to "Site Restoration"

B.L. Sta. 7+99.06, 42.50' Rt.
Construct Inlet (Double)(Type 1)
(11'4" x 4'4" Outside Dimensions)
(10'0" x 3'0" Inside Dimensions)
Install 18" RCP (West)
Top = 181.56
Flow Out = 177.57

Construct 7" A.C. Pavement
(5" bit. Base) with 8"
Reinf. Crushed Rock Base

Proposed 25.0' Reinf.
Conc. Drive Approach (8")
Match Grade @ Prop. Line
(586 S.F.)

Construct Conc. Wheel
Chair Ramp (5' Wide)

Proposed 31.0' Reinf.
Conc. Drive Approach (8")
Match Joint @ Prop. Line
(810 S.F.)

Construct Type 1 Comb.
Curb & Gutter (6")

P.V.I.
ELEV.=182.65
NO V.C.

P.V.I.
ELEV.=183.20
NO V.C.

Note:
Pavement, Sidewalks, and
Etc. To Be Removed Are
Indicated By:

Note:
Trees/Shrubs to be
removed are marked thus:

Irrigation Systems within Public
R/W in conflict with the New
Construction to be Removed
and Replaced as Necessary.

Power Poles & Utilities
in Conflict to be
Relocated by "Others"
Prior to Construction

New Traffic Signal Loops
& Appurtenances to be
Installed with This Project

PROJECT NUMBER 472-83131	SHEET NAME Pav02	ENGINEERING DIRECTORY F:\37Woodlawn\Pav
DESIGN JFB	DRAWN KWR	APPROVED JFB
DATE April 01	SCALE Noted	BAUGHMAN NO 99-04-E338

STREET IMPROVEMENTS
BRUSH CREEK 3RD ADDITION - (LOTS 1-8)
PAVING PLANS
B.L. 'A' Sta. 7+00.00 - B.L. 'A' Sta. 13+00

BAUGHMAN COMPANY, P.A.
ENGINEERING, SURVEYING, & PLANNING
318-262-7271 • 315 ELLIS • WICHITA, KANSAS 67211