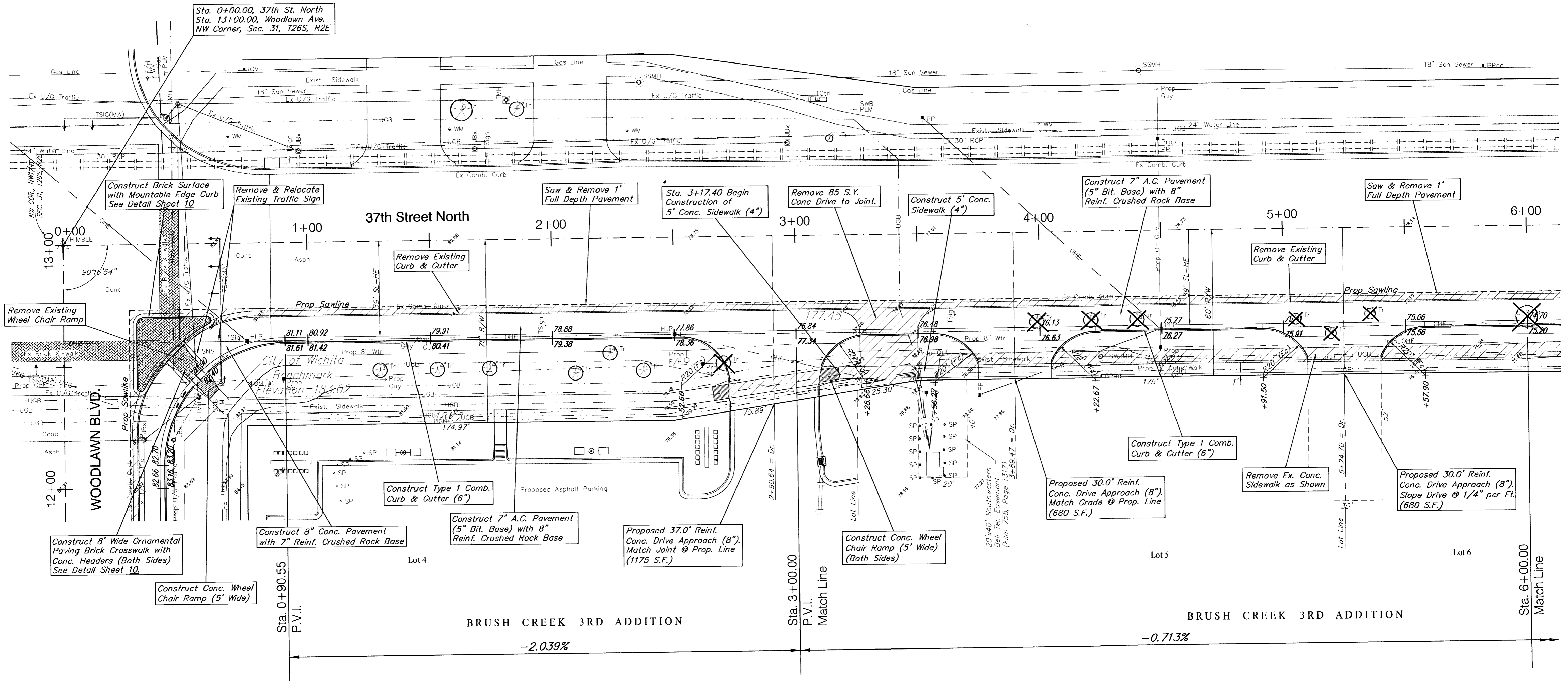
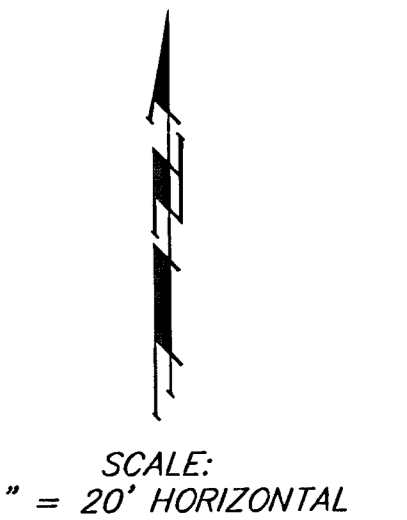


**BENCHMARK:**

BM #1 - City of Wichita Benchmark Disc -  
Woodlawn and 37th Street North, S.E. Corner  
if intersection 75.7' east & 56.3' south of  
centerline, both.  
Elev. = 183.04 (City Datum)



**Note:**  
Pavement, Sidewalks, and  
Etc. To Be Removed Are  
Indicated By:

**Note:**  
Trees/Shrubs to be  
removed are marked thus:

P.V.I.  
ELEV.=81.61  
100' V.C.

P.V.I.  
ELEV.=77.34  
100' V.C.

Power Poles & Utilities  
in Conflict to be  
Relocated by "Others"  
Prior to Construction

New Traffic Signal Loops  
& Appurtenances to be  
Installed with This Project

Sidewalk Location Shown is  
Tentative. Engineer to  
Determine Final Location.

PROJECT NUMBER 472-83131	SHEET NAME Pav03	ENGINEERING DIRECTORY E:\37Woodlawn\Pav
DESIGN JFB	DRAWN KWR	APPROVED JFB
DATE April 01	SCALE Noted	BAUGHMAN NO 99-04-E338

STREET IMPROVEMENTS  
**BRUSH CREEK 3RD ADDITION - (LOTS 1-8)**  
PAVING PLANS  
B.L. B' Sta. 0+00.00 to B.L. B' Sta. 6+00.00

**BAUGHMAN COMPANY, P.A.**  
ENGINEERING, SURVEYING, & PLANNING  
316-282-7271 • 315 ELLIS • WICHITA, KANSAS 67211

SHEET  
OF  
30