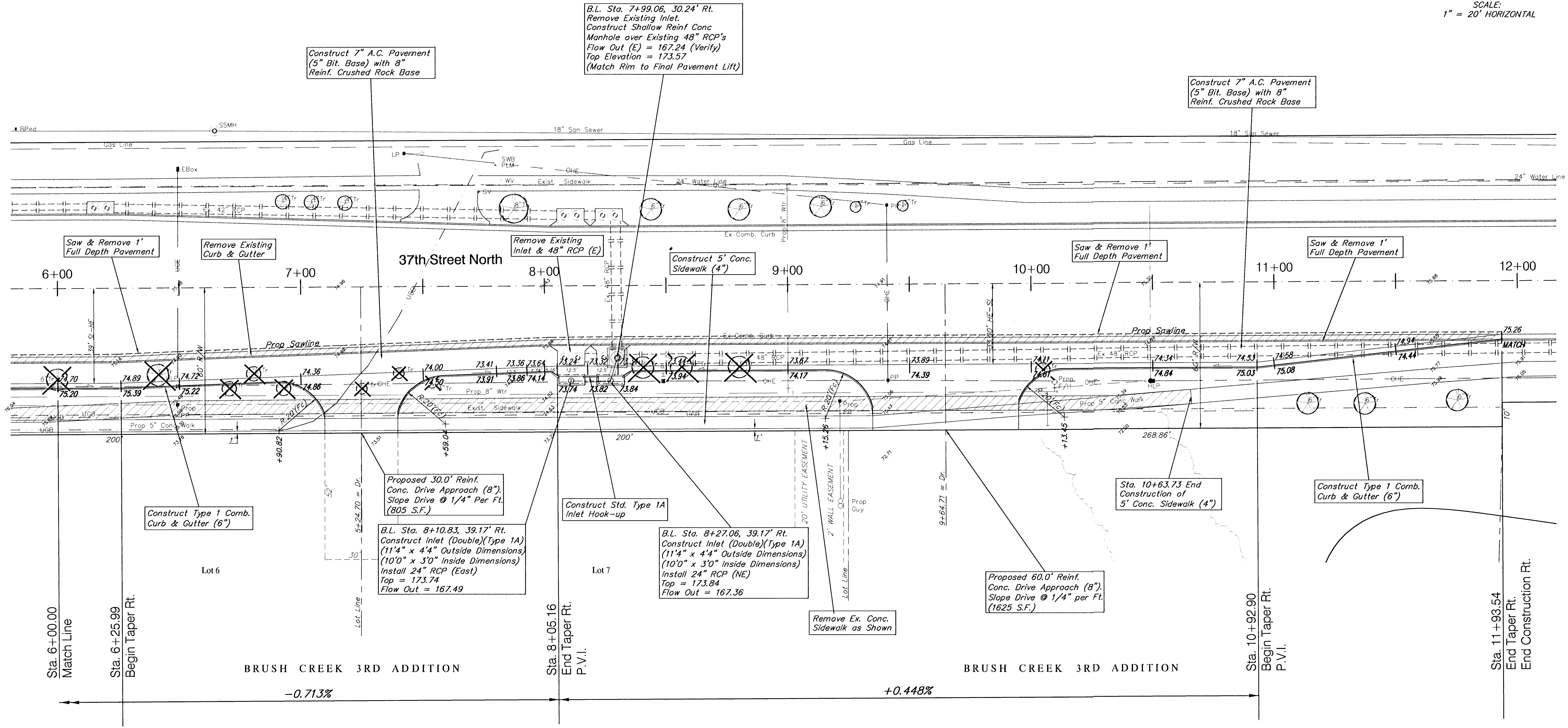
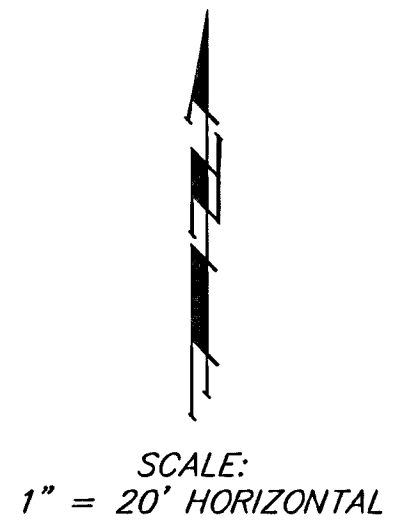
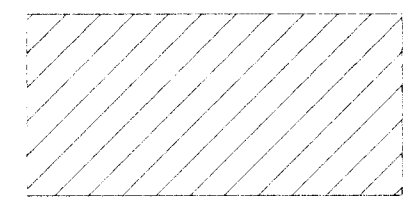


**BENCHMARK:**

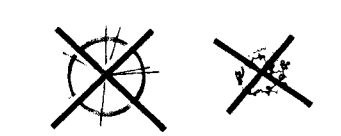
BM #1 - City of Wichita Benchmark Disc -  
Woodlawn and 37th Street North, S.E. Corner  
if intersection 75.7' east & 56.3' south of  
centerline, both.  
Elev. = 183.04 (City Datum)



**Note:**  
Pavement, Sidewalks, and  
Etc. To Be Removed Are  
Indicated By:



**Note:**  
Trees/Shrubs to be  
removed are marked thus:



Power Poles & Utilities  
in Conflict to be  
Relocated by "Others"  
Prior to Construction

Existing Traffic Signal Loops  
& Appurtenances to be  
Reinstalled with This Project

\* Sidewalk Location Shown is  
Tentative. Engineer to  
Determine Final Location.

P.V.I.  
ELEV.=73.73  
50' V.C.

P.V.I.  
ELEV.=75.03  
No V.C.

PROJECT NUMBER 472-83131		SHEET NAME Pav04		ENGINEERING DIRECTORY F:\37Woodlawn\Pav	
DESIGN JFB	DRAWN KWR	APPROVED JFB	DATE April 01	SCALE Noted	BAUGHMAN NO 99-04-E338

STREET IMPROVEMENTS  
**BRUSH CREEK 3RD ADDITION  
PAVING PLANS**  
B.L. Sta 6+00.00 to B.L. Sta. 11+93.54

**BAUGHMAN COMPANY, P.A.**  
ENGINEERING, SURVEYING, & PLANNING  
316-262-7271 • 315 ELLIS • WICHITA, KANSAS 67211

F:\Eng\37Woodlawn\Pav\Pav04.dwg Mod: Apr 25 14:09:18 2001