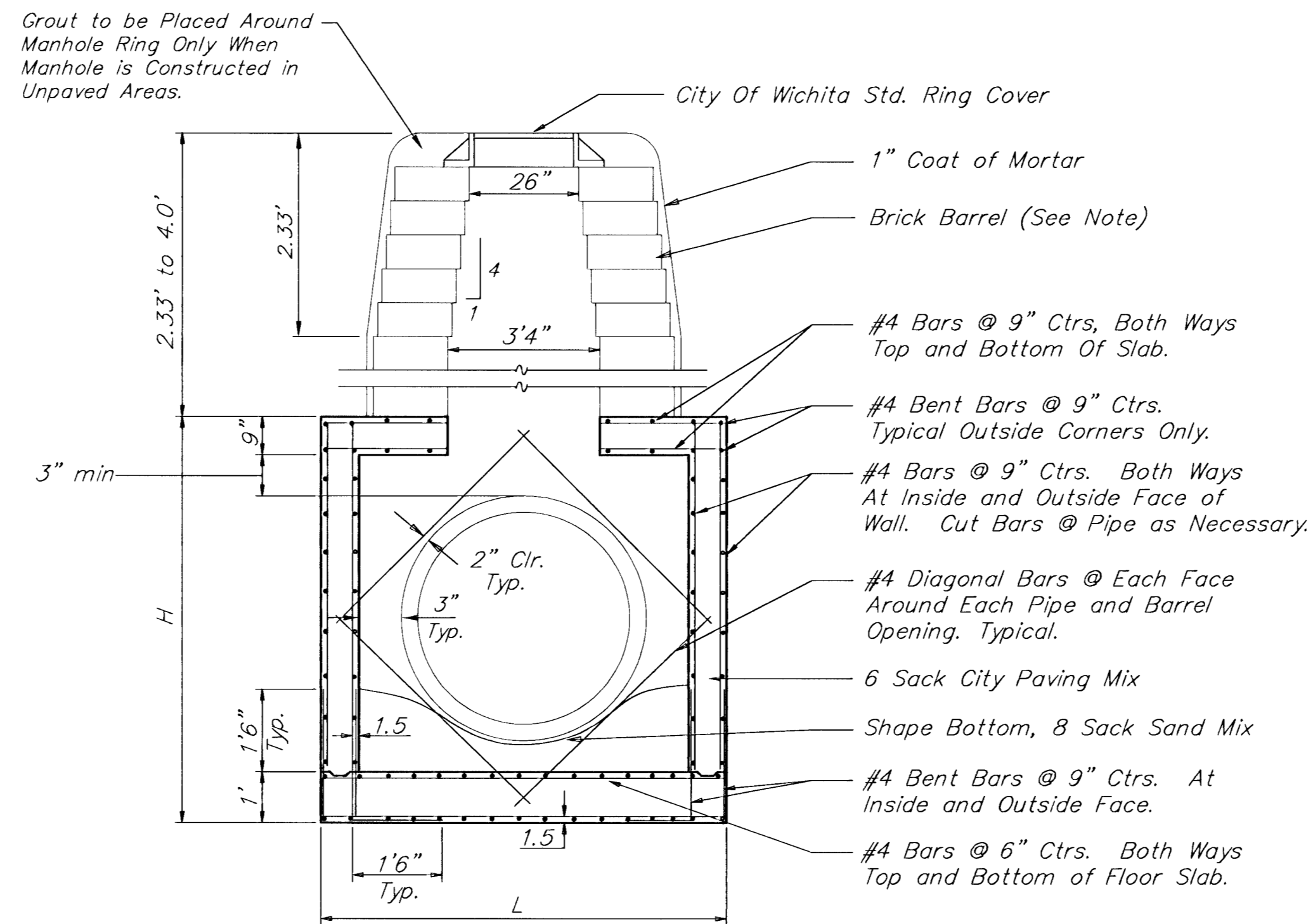
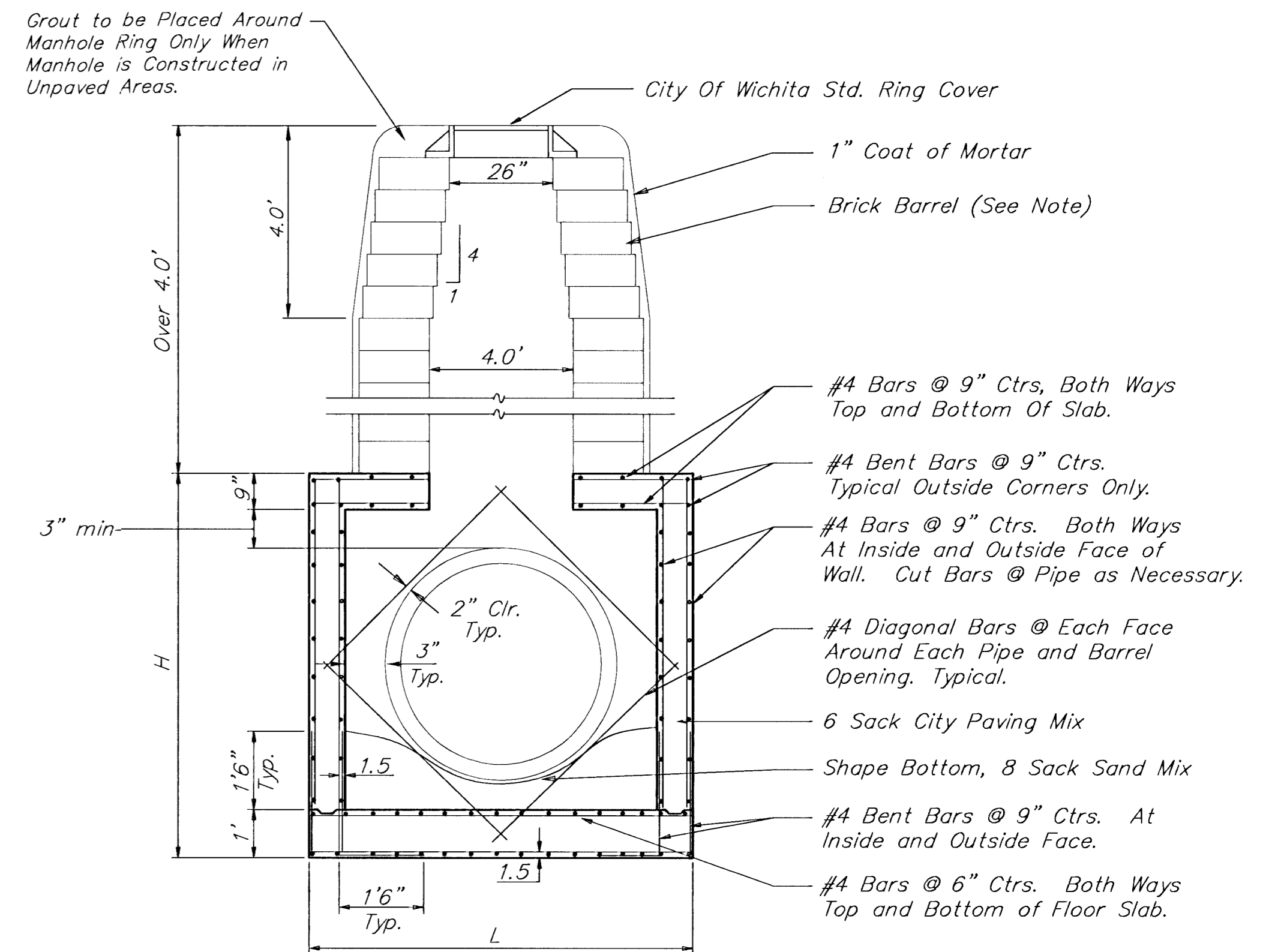


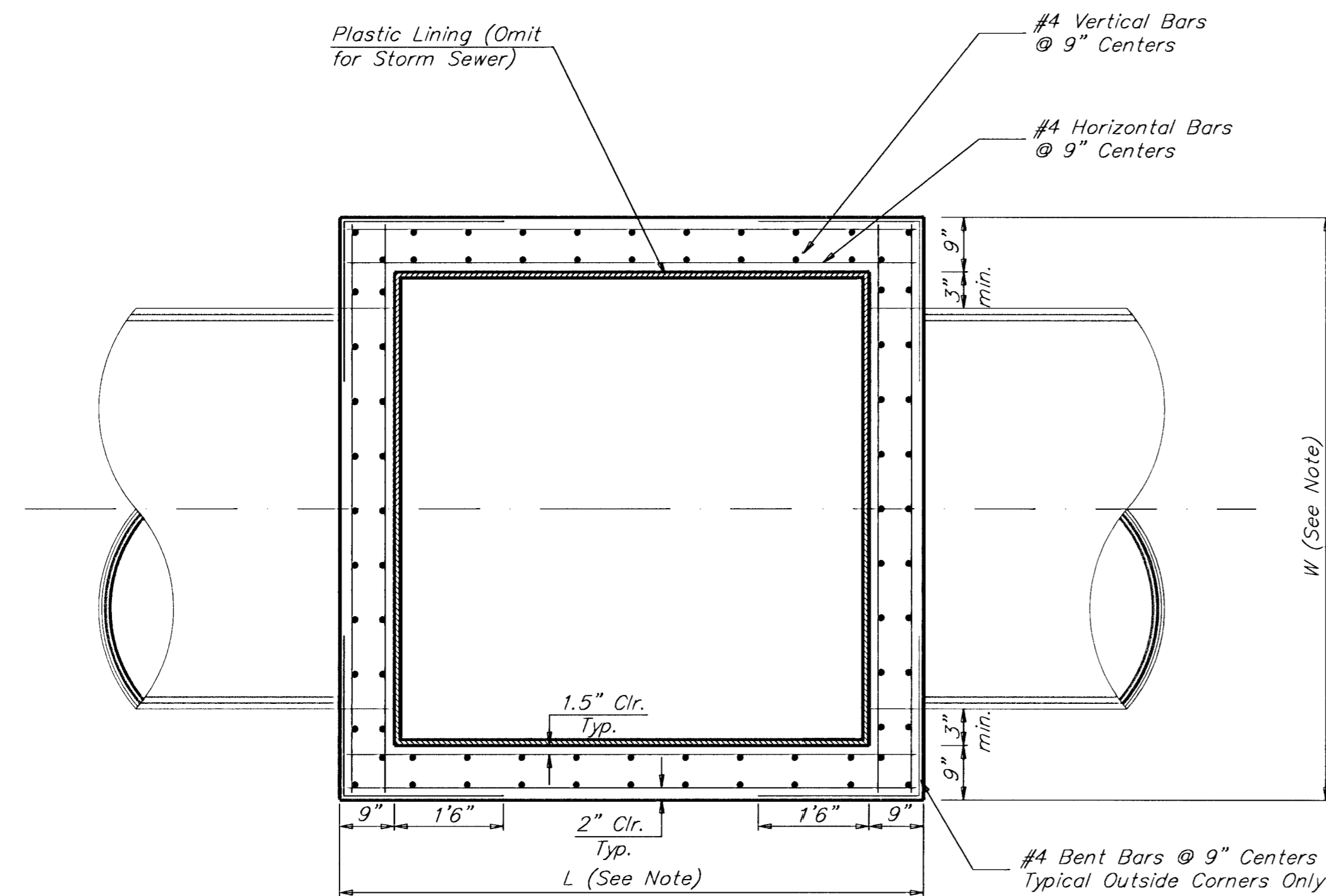
**REINFORCED CONCRETE MANHOLE**  
DEPTH OF STACK: 0' TO 2.33'



**REINFORCED CONCRETE MANHOLE**  
DEPTH OF STACK: 2.33' TO 4.0'



**REINFORCED CONCRETE MANHOLE**  
DEPTH OF STACK: OVER 4.0'



TOP VIEW

**Notes:**

Brick barrels less than 16' deep shall have 8" walls except when located within public street or alley pavement; then the wall shall be 12". Brick barrels more than 16' deep shall have 12" walls. The "L" and "W" dimensions shall be a minimum of 5'6" for brick barrels with 8" walls and 6'2" for brick barrels with 12" walls when the brick barrels are over 4' in height. Completed manhole shall be without leaks and watertight.

Concrete wall thicknesses shown represents manhole type located within traffic bearing areas. Manhole wall, base, & top dimensions may be reduced when manholes are not subject to vehicle loads. Contractor shall be required to submit shop drawings to the Engineer for approval.

PROJECT NUMBER 472-83131		SHEET NAME RCMH		ENGINEERING DIRECTORY F:\37woodlawn\Details	
DESIGN C.O.W.	DRAWN STAFF	APPROVED	DATE April 01	SCALE NONE	BAUGHMAN NO 99-04-E338
REINFORCED CONCRETE MANHOLE			STREET IMPROVEMENTS		
			BRUSH CREEK 3rd ADDITION		
<b>BAUGHMAN COMPANY, P.A.</b> ENGINEERING, SURVEYING, & PLANNING 316-262-7271 • 315 ELLIS • WICHITA, KANSAS 67211					SHEET 14 OF 30