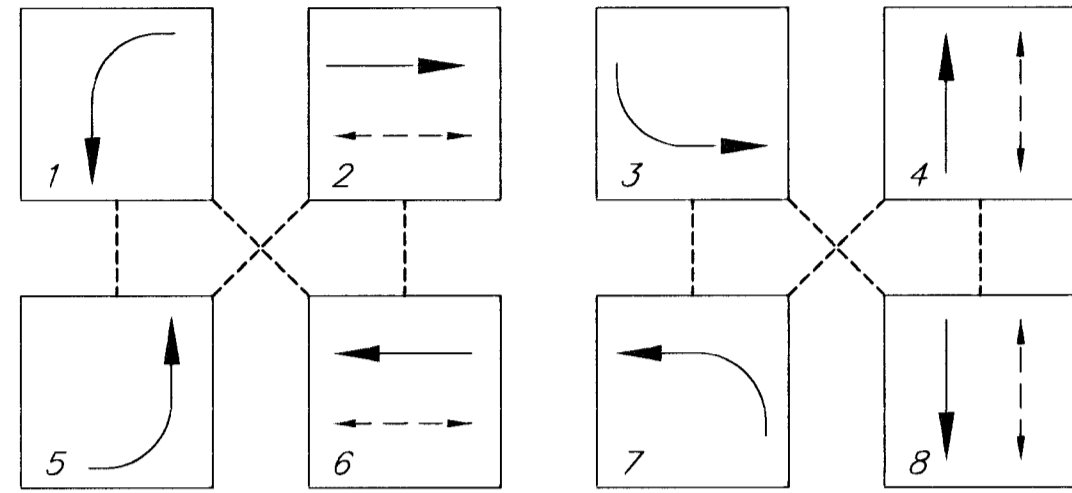


BENCHMARK:

BM #1 - City of Wichita Benchmark Disc - Woodlawn and 37th Street North, S.E. Corner if intersection 75.7' east & 56.3' south of centerline, both.
Elev. = 183.04 (City Datum)

SCALE:
1" = 20' HORIZONTAL

PHASE DIAGRAM

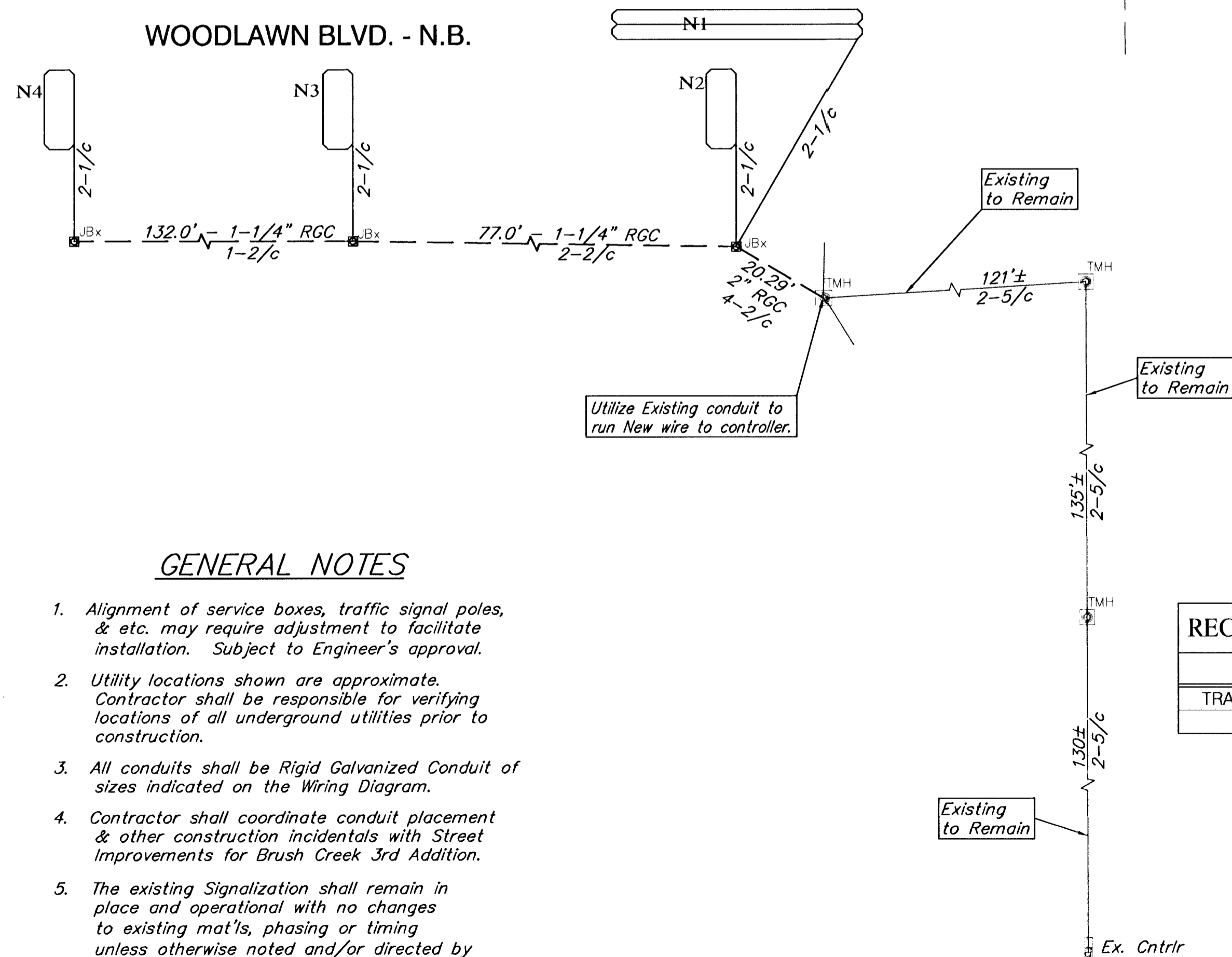


VEHICLE DETECTOR SUMMARY

LOOP NO.	LOOP SIZE W x L	NUMBER OF TURNS	DETECTOR SETTING	PHASE CALLED
N1	50' x 6'	2-4-2	PRESENCE	7
N2	16' x 6'	4	PULSE	4
N3	16' x 6'	4	PULSE	4
N4	16' x 6'	4	PULSE	4

WIRING DIAGRAM

WOODLAWN BLVD. - N.B.



GENERAL NOTES

- Alignment of service boxes, traffic signal poles, & etc. may require adjustment to facilitate installation. Subject to Engineer's approval.
- Utility locations shown are approximate. Contractor shall be responsible for verifying locations of all underground utilities prior to construction.
- All conduits shall be Rigid Galvanized Conduit of sizes indicated on the Wiring Diagram.
- Contractor shall coordinate conduit placement & other construction incidentals with Street Improvements for Brush Creek 3rd Addition.
- The existing Signalization shall remain in place and operational with no changes to existing mat'l's, phasing or timing unless otherwise noted and/or directed by Traffic Engineering Dept., City of Wichita. (Contact Jim Parks @ 268-4033)

Recut N.B. Loops as Shown and Route through New J-Boxes to Existing Traffic Service Box. Reconnect to Controller.

Existing JBoxes and Conduit Removed with Pavement Construction

Recut N.B. Loops as shown and route through Existing Traffic manhole. Reconnect to Controller.

Sta. 10+10.91, 43.5' Rt Install Traffic Junction Box as per City Specs.

Existing JBoxes and Conduit Removed with Pavement Construction

Sta. 12+19.91, 44.67' Rt Install Traffic Junction Box as per City Specs.

Sta. 11+42.91, 43.5' Rt Install Traffic Junction Box as per City Specs.

Install 132.0' of 1-1/4" RGC

Install 20.29' of 2" RGC

Install 77.0' of 1-1/4" RGC

Existing Traffic Manhole to Remain in Place through Construction of this Project

JUNCTION BOX SUMMARY

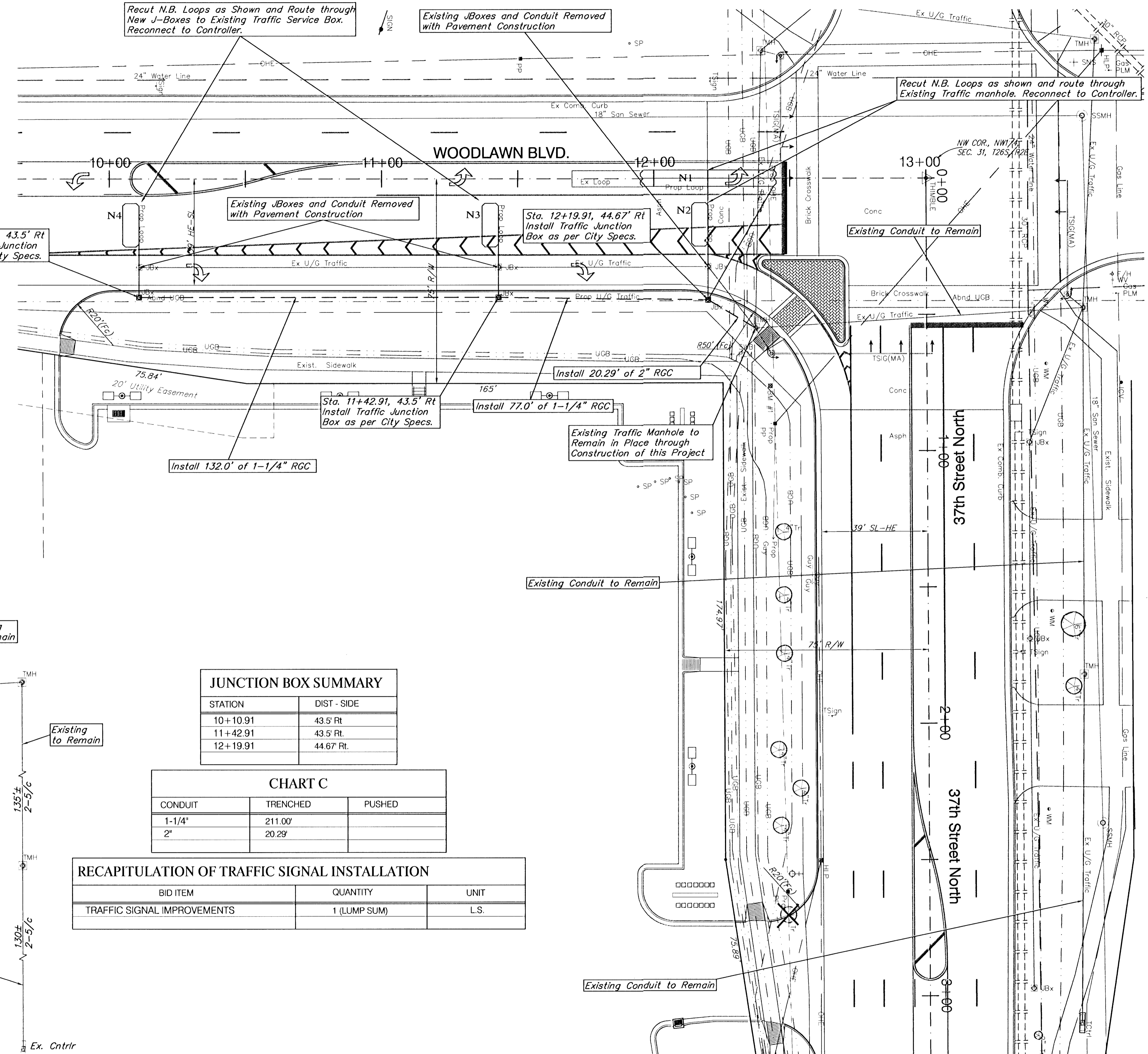
STATION	DIST - SIDE
10+10.91	43.5' Rt
11+42.91	43.5' Rt.
12+19.91	44.67' Rt.

CHART C

CONDUIT	TRENCHED	PUSHED
1-1/4"	211.00'	
2"	20.29'	

RECAPITULATION OF TRAFFIC SIGNAL INSTALLATION

BID ITEM	QUANTITY	UNIT
TRAFFIC SIGNAL IMPROVEMENTS	1 (LUMP SUM)	L.S.



PROJECT NUMBER 472-83131	SHEET NAME Sig01	ENGINEERING DIRECTORY E:\37Woodlawn\traffic
DESIGN JFB	DRAWN KWR	APPROVED JFB
DATE April 01	SCALE Noted	BAUGHMAN NO 99-04-E338

STREET IMPROVEMENT
**BRUSH CREEK 3rd ADDITION
SIGNALIZATION IMPROVEMENT**

BAUGHMAN COMPANY, P.A.
ENGINEERING, SURVEYING, & PLANNING
316-282-7271 • 315 ELLIS • WICHITA, KANSAS 67211

SHEET
OF
16
30