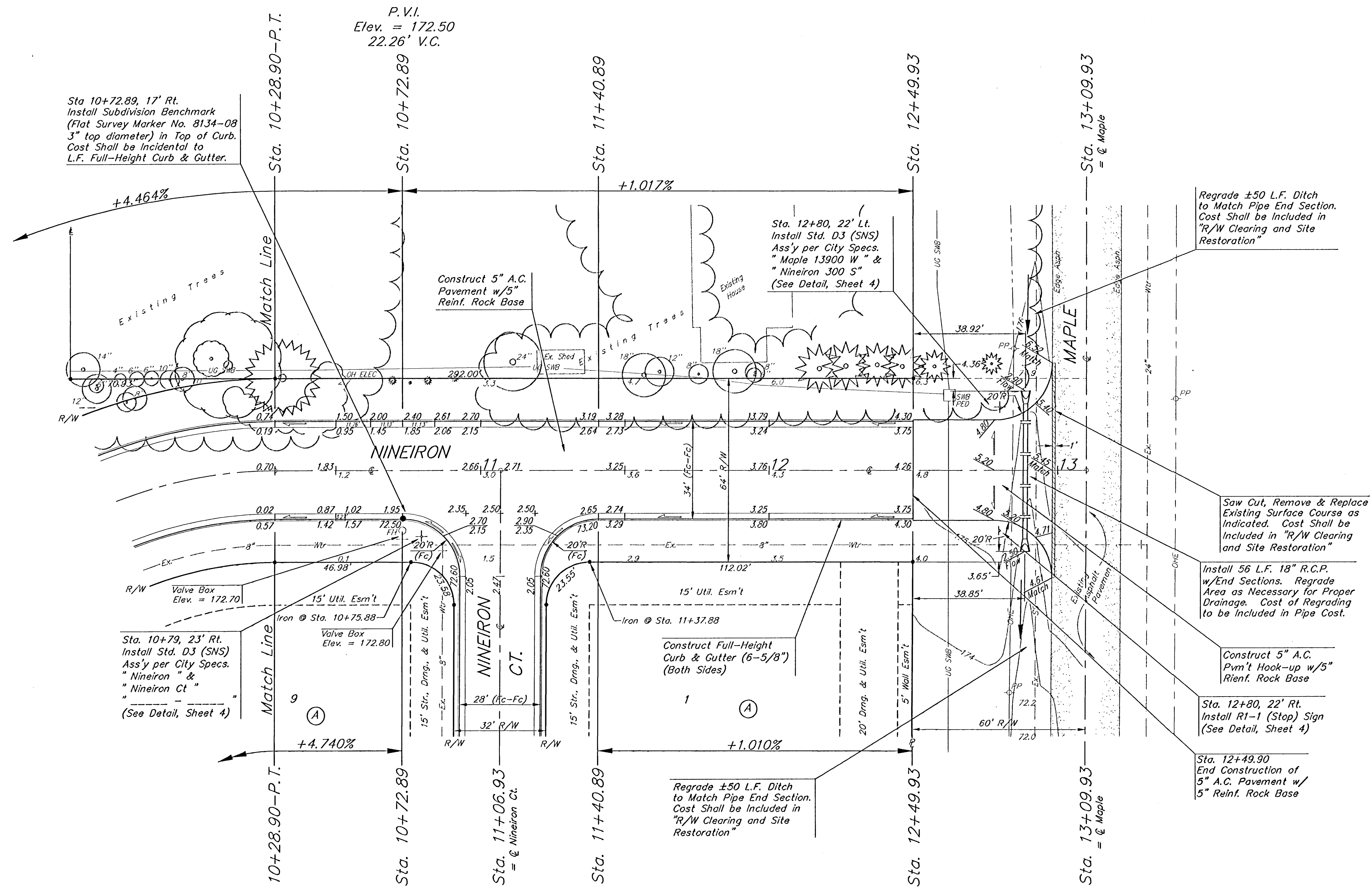


BENCH MARKS:
 City Disc - 34.3' E. & 3.3' N. of
 S.W. Corner of N.W. 1/4, Sec. 25,
 T-27-S, R-2-W.
 Elev. = 156.63 City Datum

City Disc - 135TH St. W. & Maple,
 30' N. & 15' E. @ Both.
 Elev. = 150.20 City Datum



SCALE: 1" = 20'
 • = Iron



Sta 10+72.89, 17' Rt.
 Install Subdivision Benchmark
 (Flat Survey Marker No. 8134-08
 3" top diameter) in Top of Curb.
 Cost Shall be Incidental to
 L.F. Full-Height Curb & Gutter.

P.V.I.
 Elev. = 172.50
 22.26' V.C.

Construct 5" A.C.
 Pavement w/5"
 Reinf. Rock Base

Sta. 12+80, 22' Lt.
 Install Std. D3 (SNS)
 Ass'y per City Specs.
 "Maple 13900 W" &
 "Nineiron 300 S"
 (See Detail, Sheet 4)

Regrade ±50 L.F. Ditch
 to Match Pipe End Section.
 Cost Shall be Included in
 "R/W Clearing and Site
 Restoration"

Saw Cut, Remove & Replace
 Existing Surface Course as
 Indicated. Cost Shall be
 Included in "R/W Clearing
 and Site Restoration"

Install 56 L.F. 18" R.C.P.
 w/End Sections. Regrade
 Area as Necessary for Proper
 Drainage. Cost of Regrading
 to be Included in Pipe Cost.

Construct 5" A.C.
 Pvm't Hook-up w/5"
 Reinf. Rock Base

Sta. 12+80, 22' Rt.
 Install R1-1 (Stop) Sign
 (See Detail, Sheet 4)

Sta. 12+49.90
 End Construction of
 5" A.C. Pavement w/
 5" Reinf. Rock Base

Sta. 10+79, 23' Rt.
 Install Std. D3 (SNS)
 Ass'y per City Specs.
 "Nineiron" &
 "Nineiron Ct"
 (See Detail, Sheet 4)

Regrade ±50 L.F. Ditch
 to Match Pipe End Section.
 Cost Shall be Included in
 "R/W Clearing and Site
 Restoration"

P.V.I.
 Elev. = 171.28
 No V.C.

AUBURN HILLS ADDITION - PHASE I
NINEIRON
 STA. 10+28.90 TO STA. 13+09.93

BAUGHMAN COMPANY P.A.
 ENGINEERING, SURVEYING, & PLANNING
 318-282-7271 • 315 ELLIS • WICHITA, KANSAS 67211

PROJECT NUMBER
472-83290

DESIGN: DMV DRAWN: JAK APPROVED: DATE: 3-14-01 SCALE: NOTED

SHEET
 OF 30