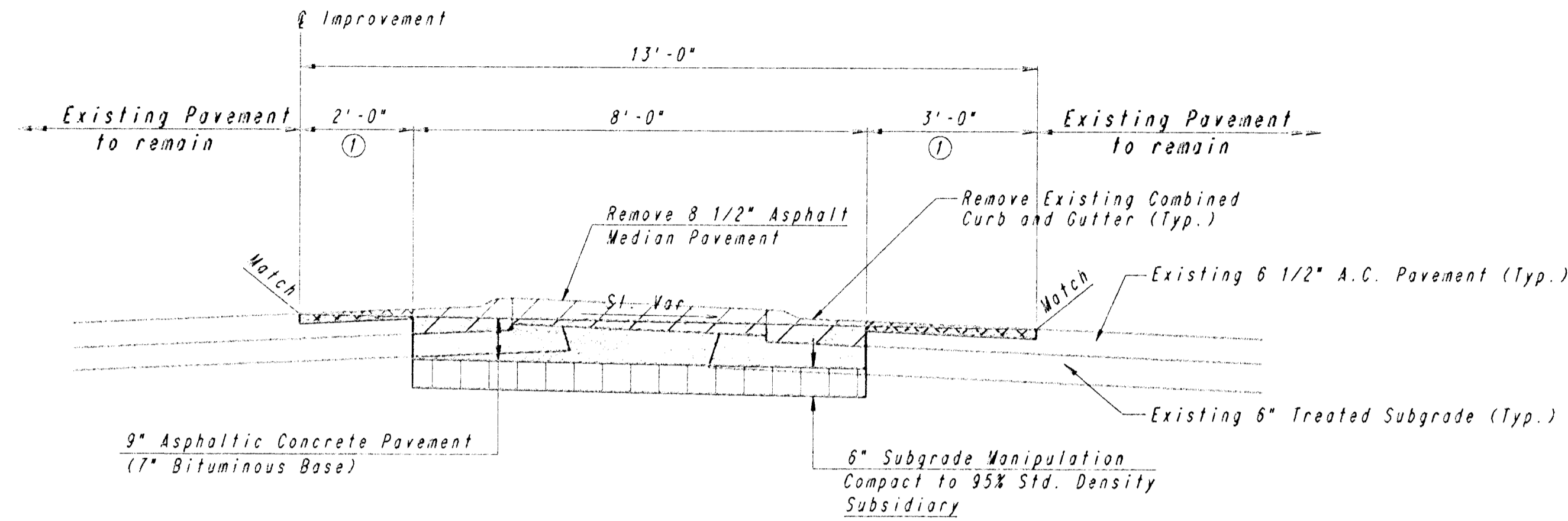
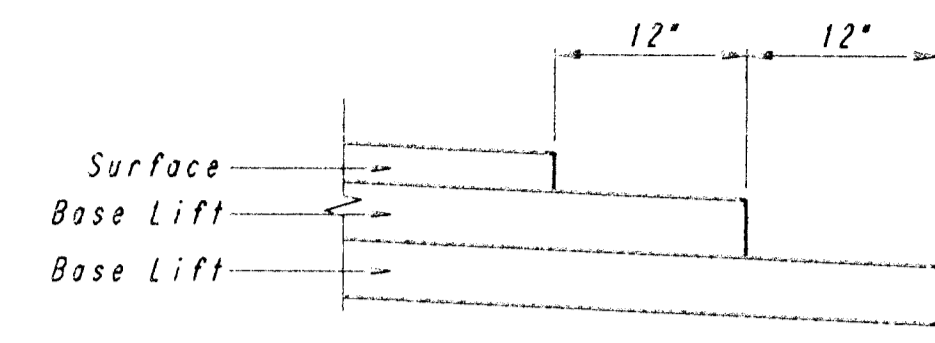


- ① Asphalt Cold Milling (2" Nominal). Saw Cut where necessary to provide Vertical Plane and/or Neat Line as directed by the Engineer. Saw Cut shall be subsidiary to Milling.
- ② Varies Sta. 1039+25 to Sta. 1040+58 See Plan.
- ③ 13'-0" Sta. 1041+70.5± to Sta. 1041+75.
- ④ Varies Sta. 1045+15± to Sta. 1045+38±, 11'-0" Sta. 1045+38± to Sta. 1045+61.
- ⑤ Varies Sta. 1045+15± to Sta. 1045+38± See Plan. End at Sta. 1045+38±.



TYPICAL SECTION
Sta. 1036+65 to Sta. 1039+25



TRANSVERSE CONSTRUCTION JOINTS

TRANSVERSE CONSTRUCTION JOINTS SHALL BE CONSTRUCTED IN FLEXIBLE BASE PAVEMENTS AT LOCATIONS WHERE PAVEMENT JOINS EXISTING FLEXIBLE BASE PAVEMENT AS SHOWN BY THE DETAIL. ALL COSTS ASSOCIATED WITH THE CONSTRUCTION OF THE TRANSVERSE JOINT SHALL BE INCLUDED IN THE BID PRICE FOR SQUARE YARDS 9" ASPHALTIC CONCRETE PAVEMENT (7" BITUMINOUS BASE).

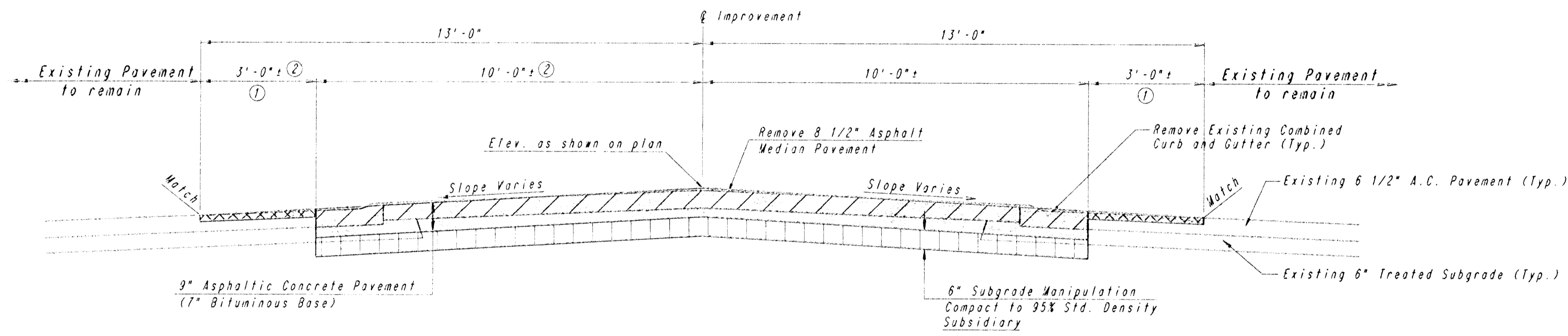
GENERAL NOTES

A TACK COAT OF EMULSIFIED ASPHALT (SC-1H OR CSS-1H) SHALL BE APPLIED AT AN APPROXIMATE RATE OF 0.05 GALLONS PER SQUARE YARD BETWEEN EACH LIFT OF ASPHALTIC MATERIAL.

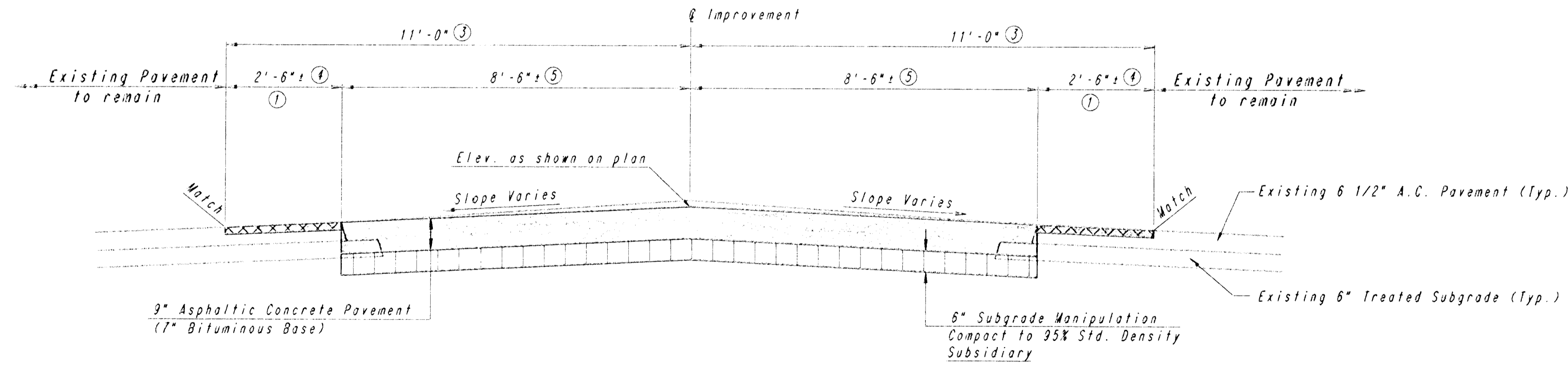
BITUMINOUS BASE AND ASPHALTIC CONCRETE WEARING SURFACE SHALL BE PLACED WITH A LAYDOWN MACHINE HAVING AUTOMATIC CONTROLS FOR LINE AND GRADE.

CONSTRUCTION JOINTS IN EACH LIFT SHALL BE STAGGERED A MINIMUM DISTANCE OF ONE (1) FOOT FROM JOINTS IN PRECEDING LIFTS AND PLACED SO THAT A JOINT WILL BE CONSTRUCTED ON THE CENTERLINE OF THE TOP LIFT.

PRIOR TO PLACEMENT OF CRUSHED ROCK BASE, CONTRACTOR SHALL SCARIFY 6" OF SUBGRADE TO THE LIMITS OF CRUSHED ROCK BASE, BRING MOISTURE TO REQUIRED LIMITS AND COMPACT TO 95% STD. DENSITY AS SPECIFIED IN CITY OF WICHITA STANDARD SPECIFICATIONS UNDER "PREPARATION OF SUBGRADE". ALL EARTH MATERIALS FOR THIS WORK ARE INCLUDED IN COMPACTED FILL (90% STD. DENSITY), SCARIFYING, MOISTURE CONDITIONING & COMPACTION SHALL BE SUBSIDIARY TO "8-INCH REINFORCED CRUSHED ROCK BASE".



TYPICAL SECTION
Sta. 1039+25 to Sta. 1041+70.5±



TYPICAL SECTION
Sta. 1041+70.5± to Sta. 1045+61

| | | | |
|-----------|-----------|---------|------|
| PLAN | SURVEYED | BY | DATE |
| NOTE BOOK | PLOTTED | | |
| NO. | ALIGNMENT | CHECKED | |
| | NO. | BY | DATE |
| | | | |

DRAWING NAME: 20684420-3 LUBRN TYP SEC
 DRAWING NO.: 20684420-3 LUBRN TYP SEC
 CENTER COORDINATES:
 ROTATION ANGLE:
 DATE LAST WORKED ON: APRIL 5, 1995
 DRAWING SCALE:

21ST STREET NORTH

TYPICAL SECTIONS

PROFESSIONAL ENGINEERING CONSULTANTS, P.A.
ENGINEERS
WICHITA, KANSAS

| | | | |
|-------------|----------|------------|------------|
| Designed by | MWB, GDD | Checked by | |
| Drawn by | DEP, BJS | Date | APR., 1995 |
| | | Job No. | 94420-3 |