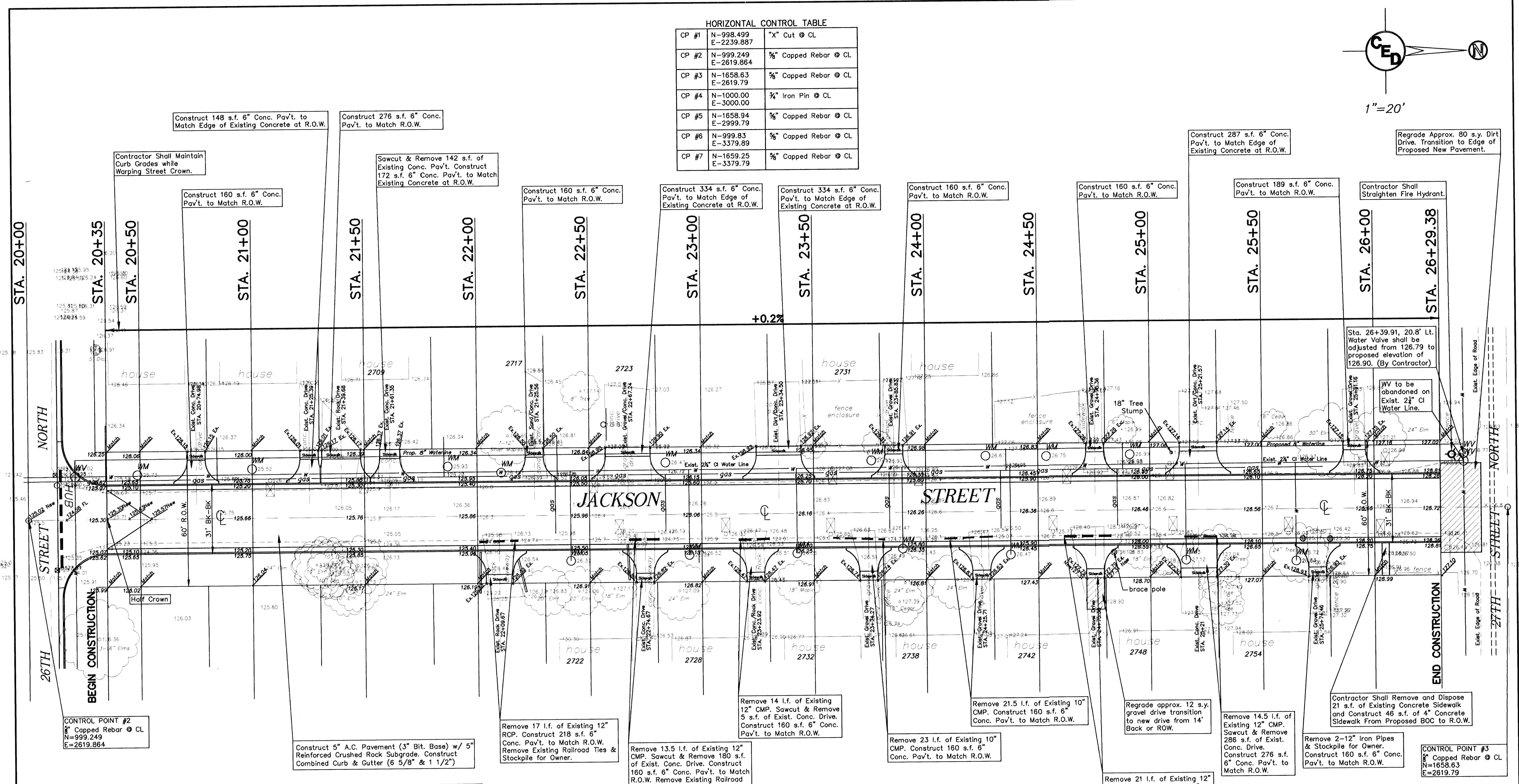
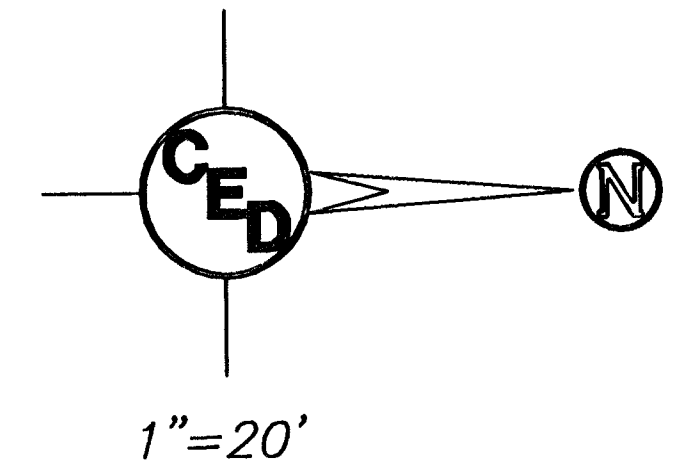


HORIZONTAL CONTROL TABLE

CP #1	N-998.499 E-2239.887	"X" Cut @ CL
CP #2	N-999.249 E-2619.864	3/8" Capped Rebar @ CL
CP #3	N-1658.63 E-2619.79	3/8" Capped Rebar @ CL
CP #4	N-1000.00 E-3000.00	3/4" Iron Pin @ CL
CP #5	N-1658.94 E-2999.79	3/8" Capped Rebar @ CL
CP #6	N-999.83 E-3379.89	3/8" Capped Rebar @ CL
CP #7	N-1659.25 E-3379.79	3/8" Capped Rebar @ CL



WATER SERVICE TABLE

Sta.	Desc.	Lt.	Rt.	Exist. Top Elev.	Prop. Top Elev.
20+38.76	WM	19.68'		125.73	125.75
21+00.08	WM	21.88'		125.52	125.87
21+86.92	WM	22.16'		125.93	126.08
22+10.77	WM	19.28'		126.46	125.99
22+41.64	WM	20.22'		126.04	126.29
22+84.05	WM	23.12'		126.47	126.37
22+94.47	WM	18.01'		126.09	126.23
23+42.47	WM	17.72'		126.26	126.32
23+75.81	WM	23.28'		126.55	126.55
23+94.47	WM	18.01'		126.14	126.39
24+26.70	WM	24.89'		126.67	126.61
24+37.62	WM	19.08'		126.47	126.55
24+53.70	WM	24.53'		126.75	126.68
24+91.08	WM	24.84'		126.99	126.73
25+15.91	WM	22.23'		127.12	126.96
25+64.96	WM	24.53'		126.63	126.90

BENCHMARK TABLE

PK Nail in Conc. seam of Waco near N. R/W Line of 25th. Elev. = 124.31(City Datum)
"M" in Mueller SW Quad of Waco & 26th St. Elev. = 126.48(City Datum)
R.R. Spike in West Face of PP, 65' E. of CL Fairview on S. Side 26th St. Elev. = 128.29(City Datum)
"M" in Mueller SW Quad Waco & 27th St. Elev. = 129.47(City Datum)
RR Spike in PP on West Face Approx. 25' E of CL Fairview & 30' S. of CL 27th. Elev. = 127.51(City Datum)
"M" in Mueller SW Quad. 27th St. & Jackson St. Elev. = 128.93(City Datum)

LEGEND

☐ = catv box	⊙ = power pole
⊕ = fire hydrant	○ = sign
⊗ = guard post	⊙ = san. sewer manhole
⊖ = guy anchor	⊙ = storm sewer manhole
⊙ = guy pole	⊙ = telephone riser
⊙ = light pole	⊙ = water meter
⊙ = mailbox	⊙ = water valve

STREET PAVING PLAN FOR
JACKSON AVENUE
 BETWEEN 26TH ST. N. & 27TH ST. N.
 COW PROJ. NO.: 472 83160 (765593)
CERTIFIED ENGINEERING DESIGN
GED
 438 NORTH OHIO
 WICHITA, KANSAS 67214
 (316) 262-8808

DESIGNED: HDF
 DRAWN: AEE,CKW
 CHECKED: HDF

SCALE: 1"=20'
 DATE: 02-2000
 CED FILE: jkcn-stpjan

SHEET 5
 TOTAL 24

UTILITIES SHOWN REPRESENT THE BEST INFORMATION AVAILABLE FOR DESIGN. ADDITIONAL UTILITIES MAY BE PRESENT ON THIS PROJECT. THE CONTRACTOR SHALL BE RESPONSIBLE FOR DETERMINING THE EXACT LOCATION, DEPTH AND SIZE OF ALL UNDERGROUND UTILITIES PRIOR TO CONSTRUCTION. THE CONTRACTOR SHALL BE LIABLE FOR ANY DAMAGE CAUSED BY THE FAILURE TO DO SO.

Note: *Guard Posts to be Removed by Contractor

Utilities shown were located by respective owners. Any Utilities not shown are due to no response to Kansas One Call "1-800-DIG-SAFE" Ticket #434954.

Utility locations shown hereon are based on information received from Kansas One-Call (1-800-DIG-SAFE) identified by Ticket #434954 on December 28, 1999. Before any digging, contractor should verify utility locations by calling 1-800-DIG-SAFE.