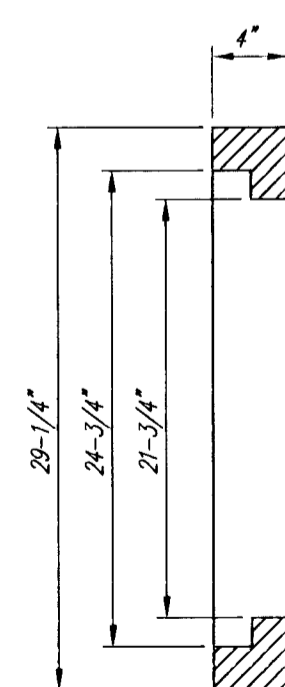
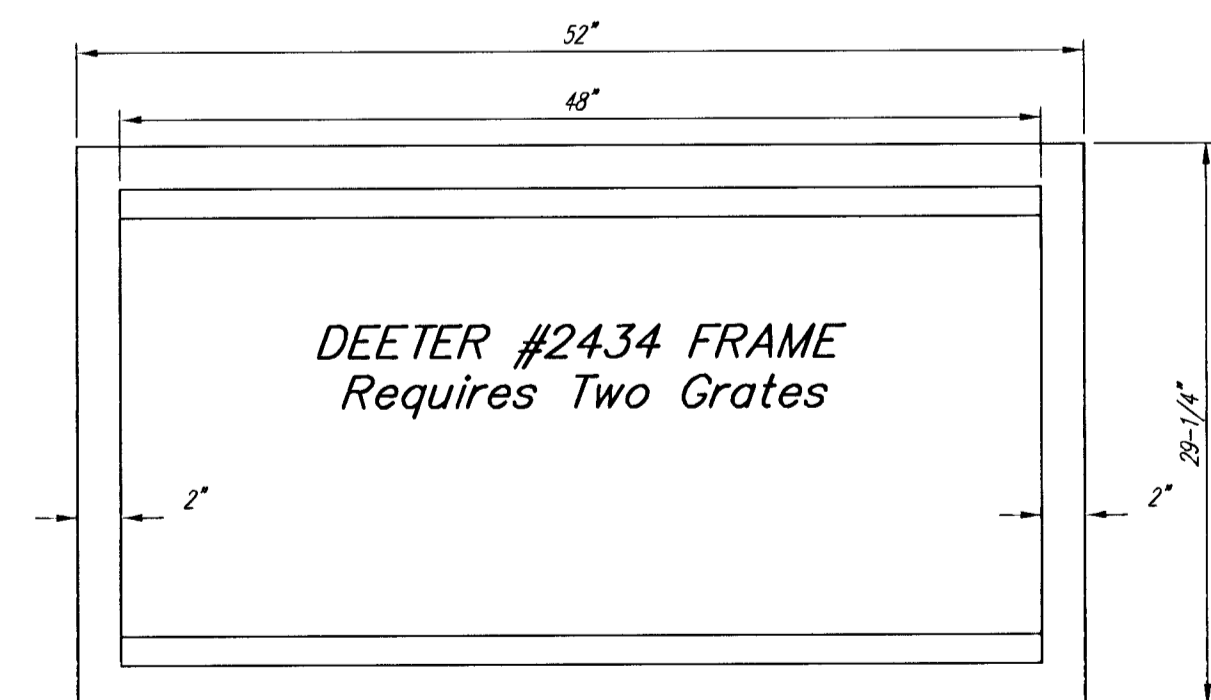


DEETER #2433 GRATE

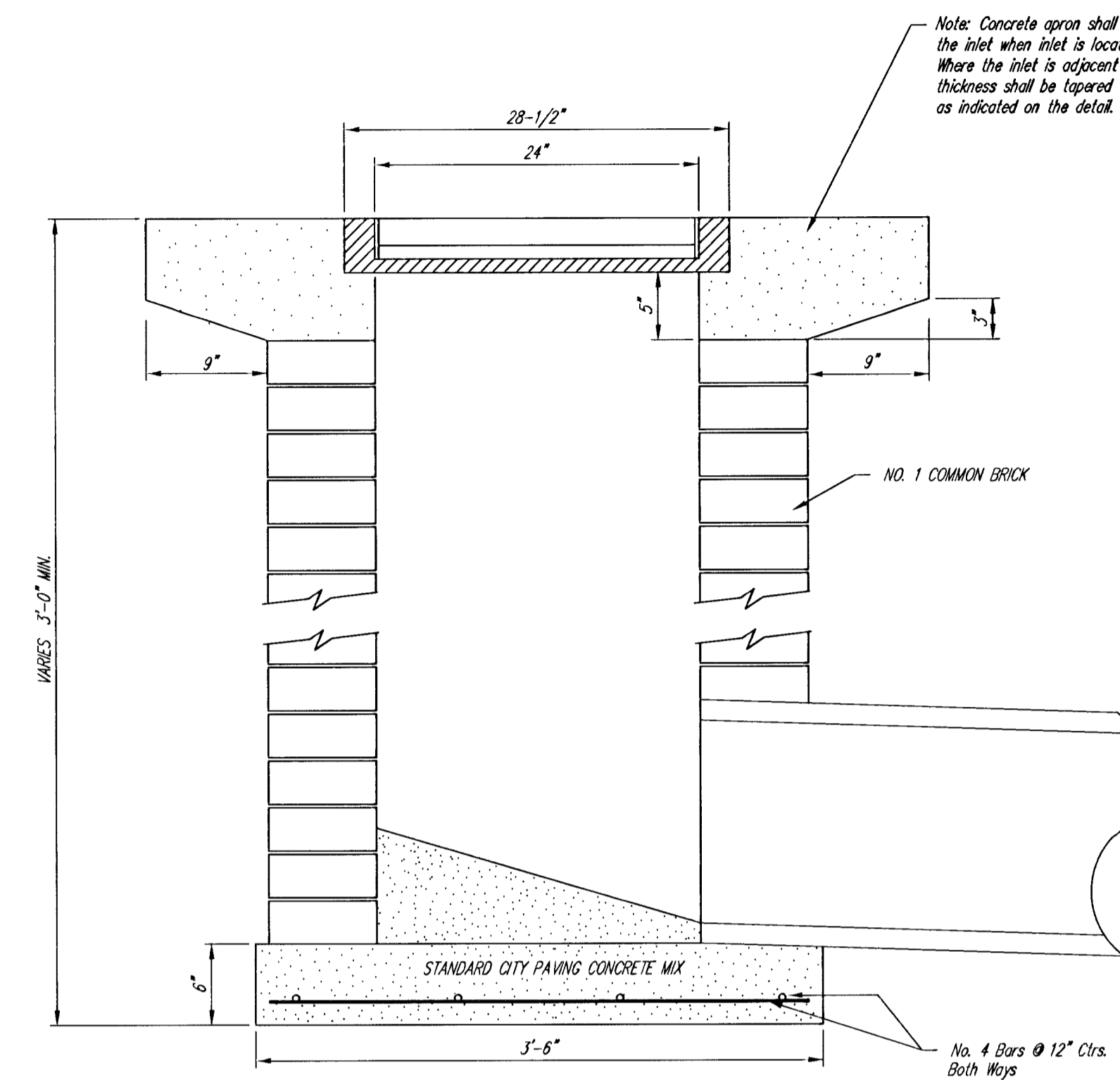
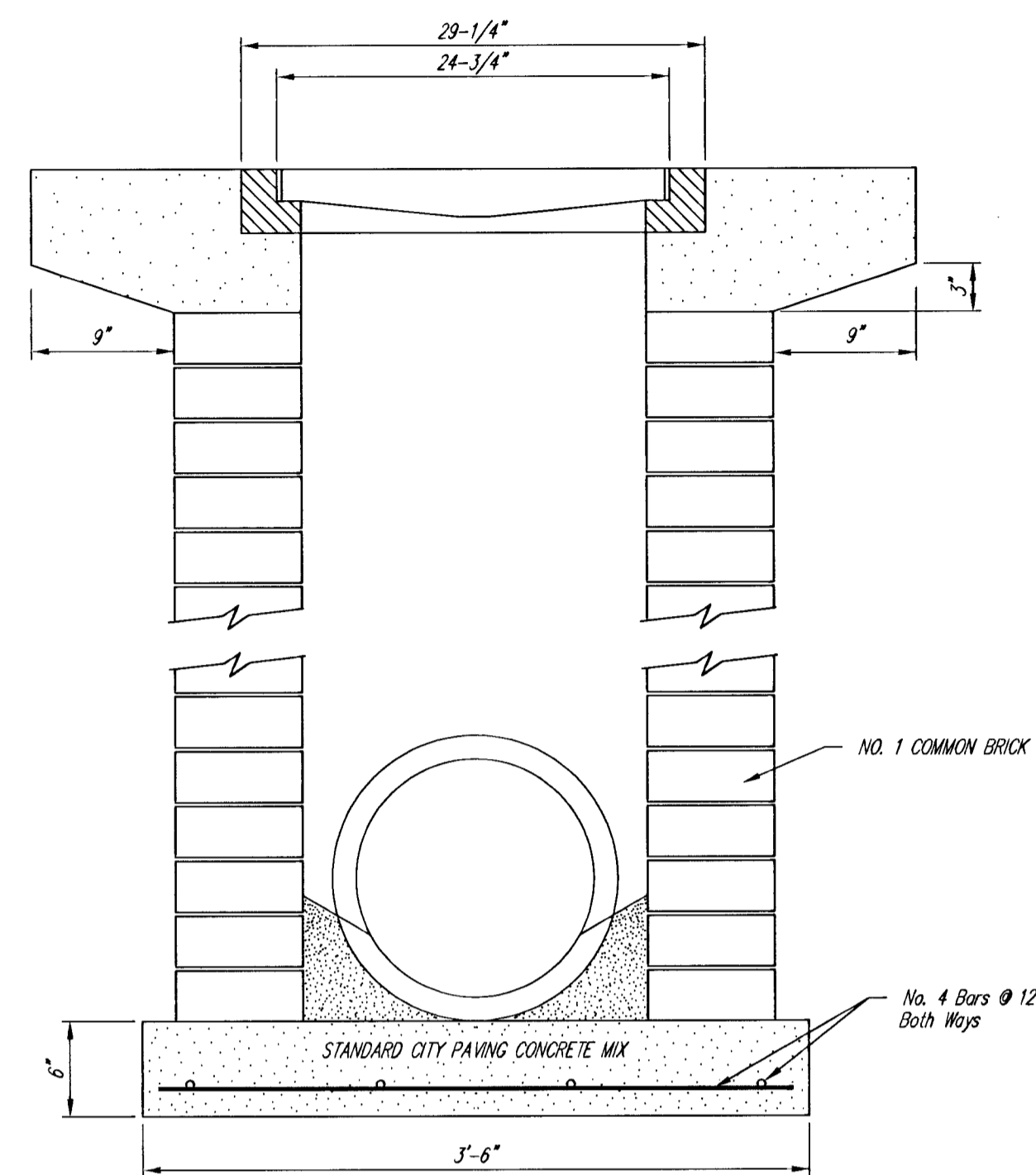
24" x 24" Frame and Grate Detail

NOTE: Grates shall be imprinted on the top surface with "CITY OF WICHITA" using letters at least 1" in height. Other marking methods may be approved by the engineer.

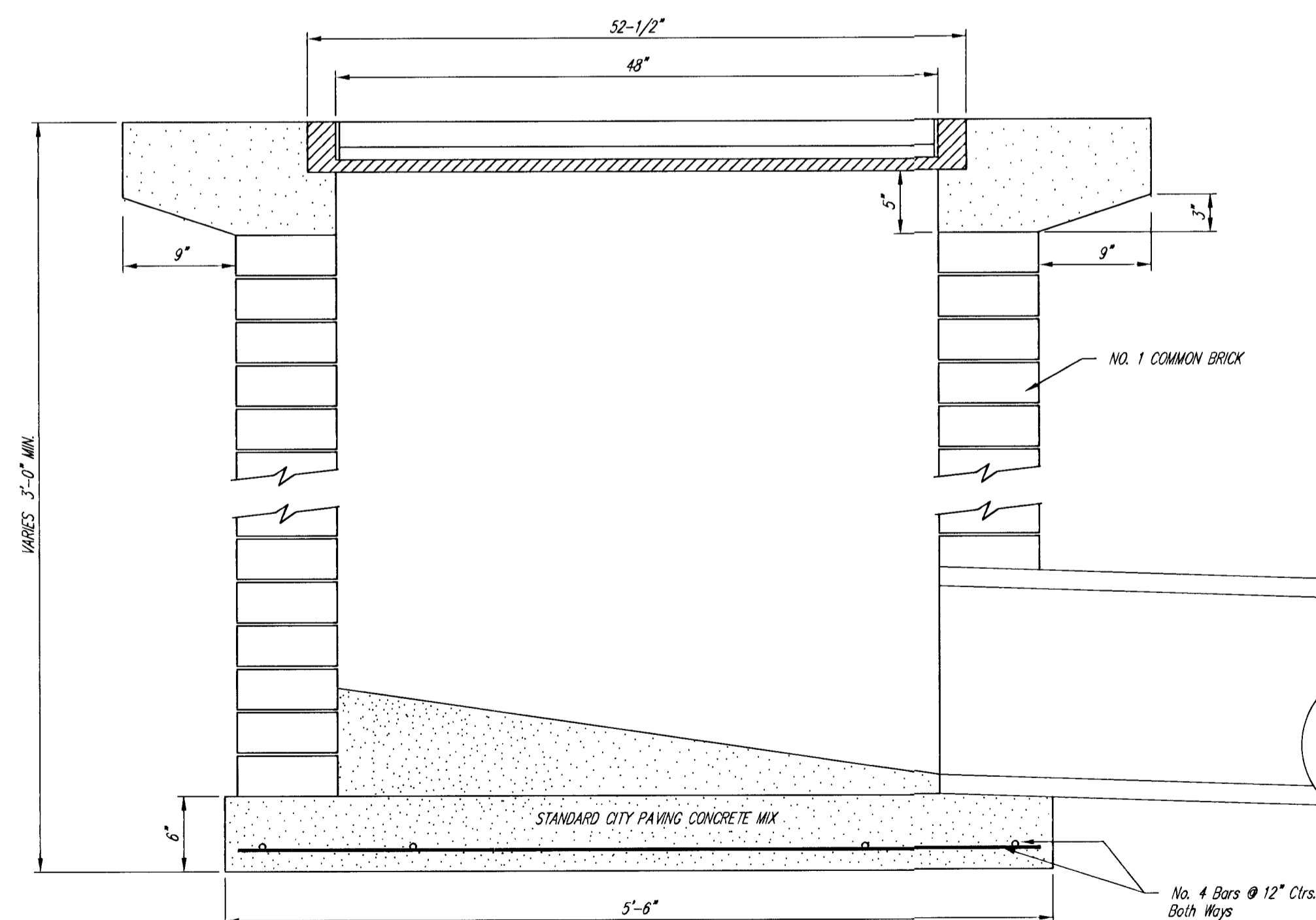


DEETER #2434 FRAME
Requires Two Grates

Double 24" x 24" Frame Detail



Note: Concrete apron shall be constructed around the inlet when inlet is located in an unpaved area. Where the inlet is adjacent to pavement, the pavement thickness shall be tapered to the inlet in 9 inches as indicated on the detail.



City of Wichita Standard Drop Inlet				
BAUGHMAN COMPANY P.A. ENGINEERING, SURVEYING, & PLANNING 316-262-7221 • 315 ELLIS • WICHITA, KANSAS 67211				
PROJECT NUMBER 472-62929				
DESIGN C.O.W.	DRAWN Staff	APPROVED	DATE 7-97	SCALE NONE
				SHEET 13 OF 37