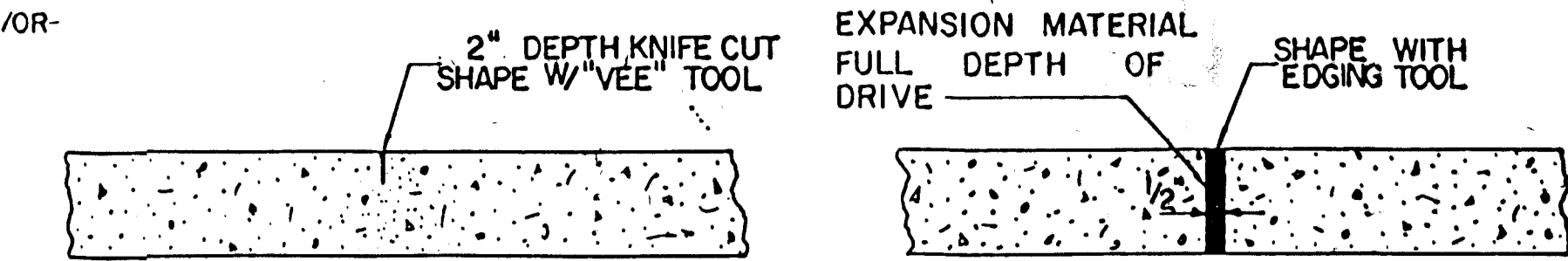
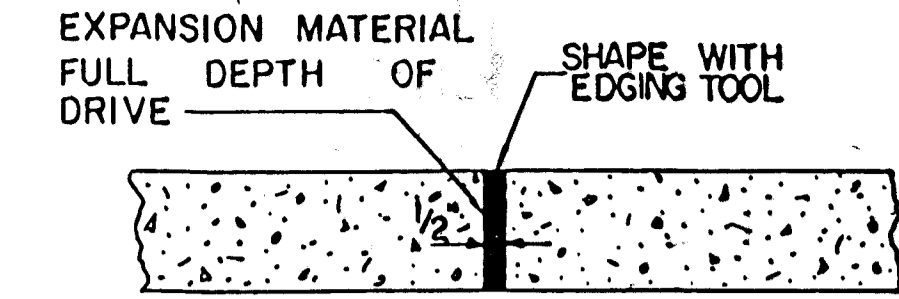


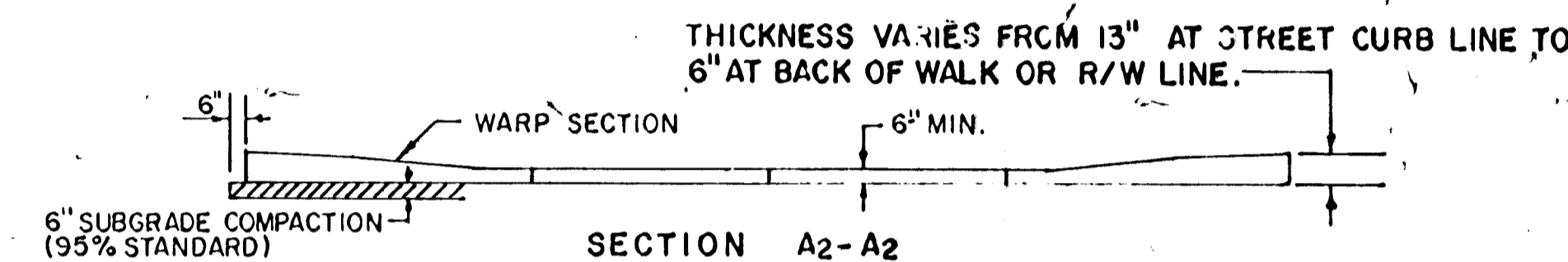
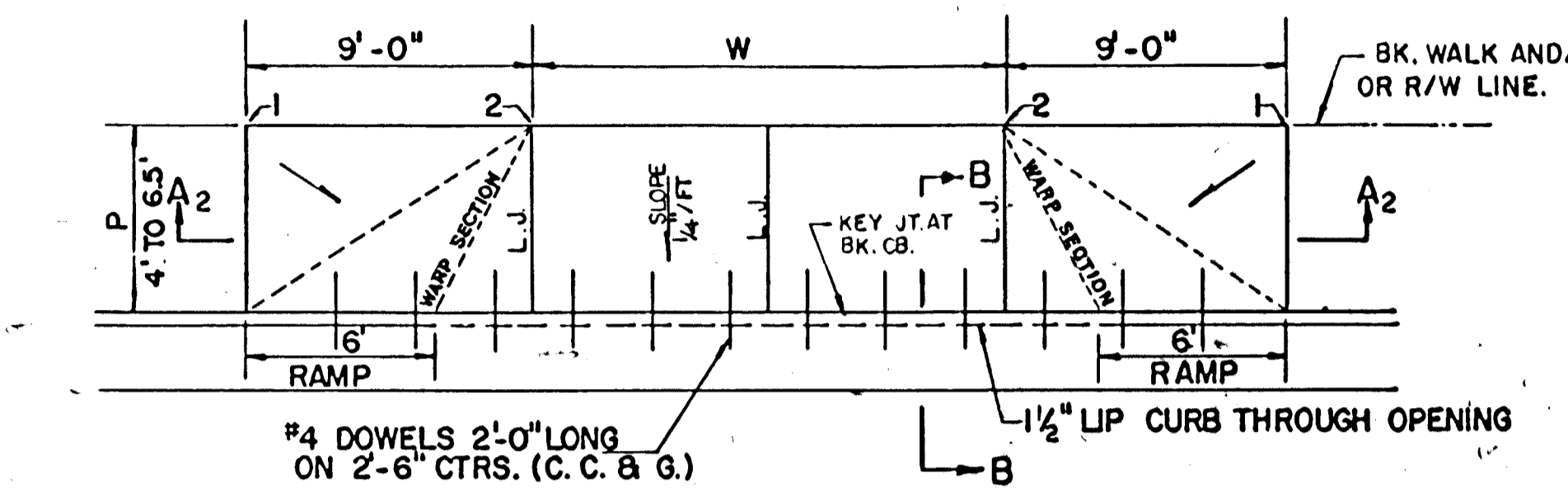
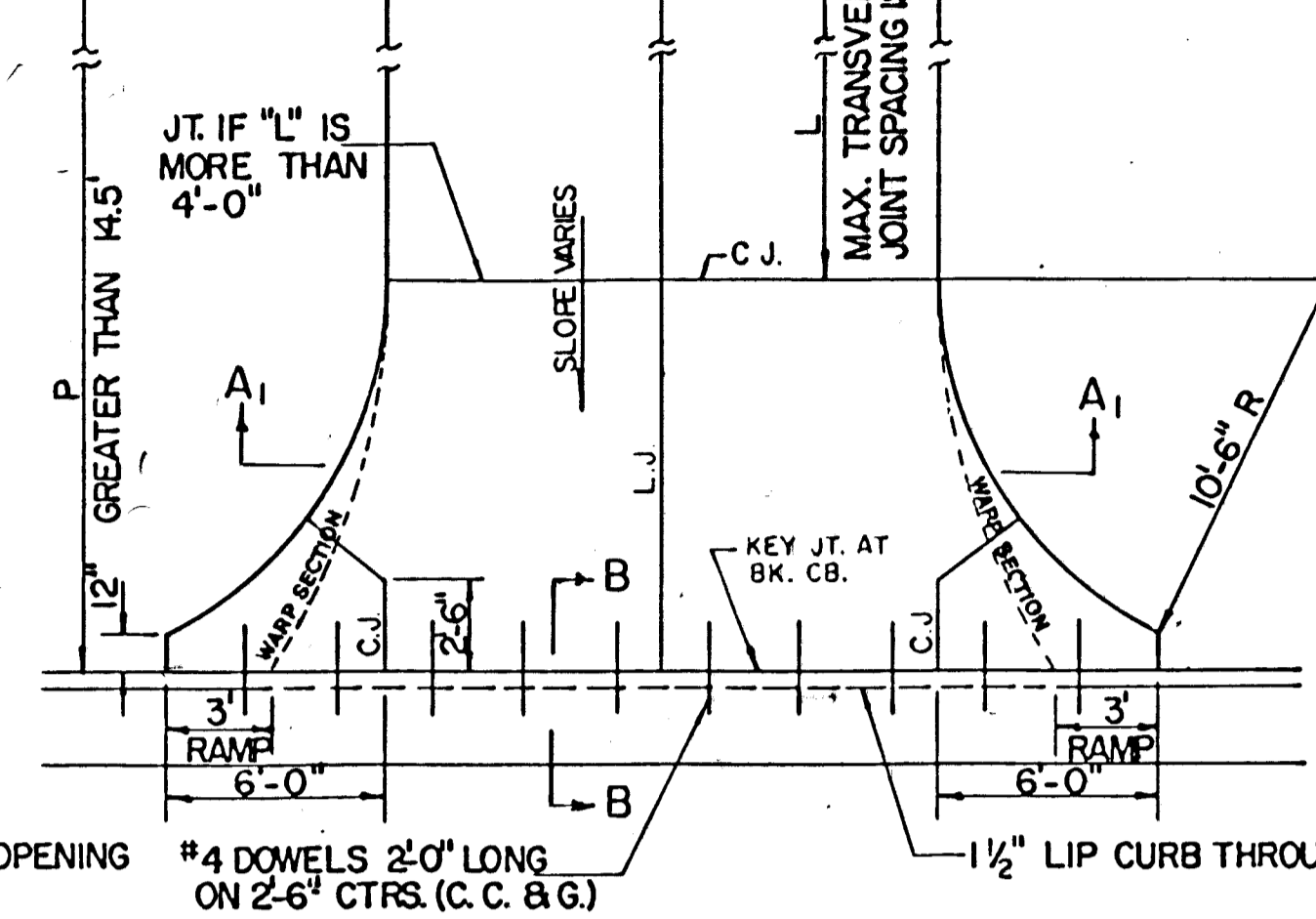
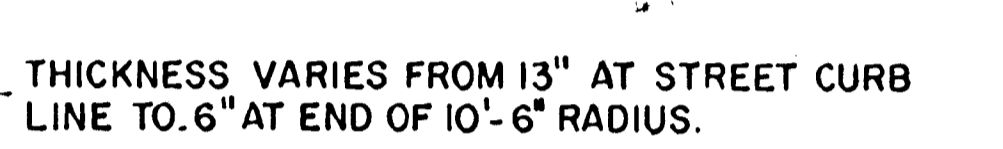
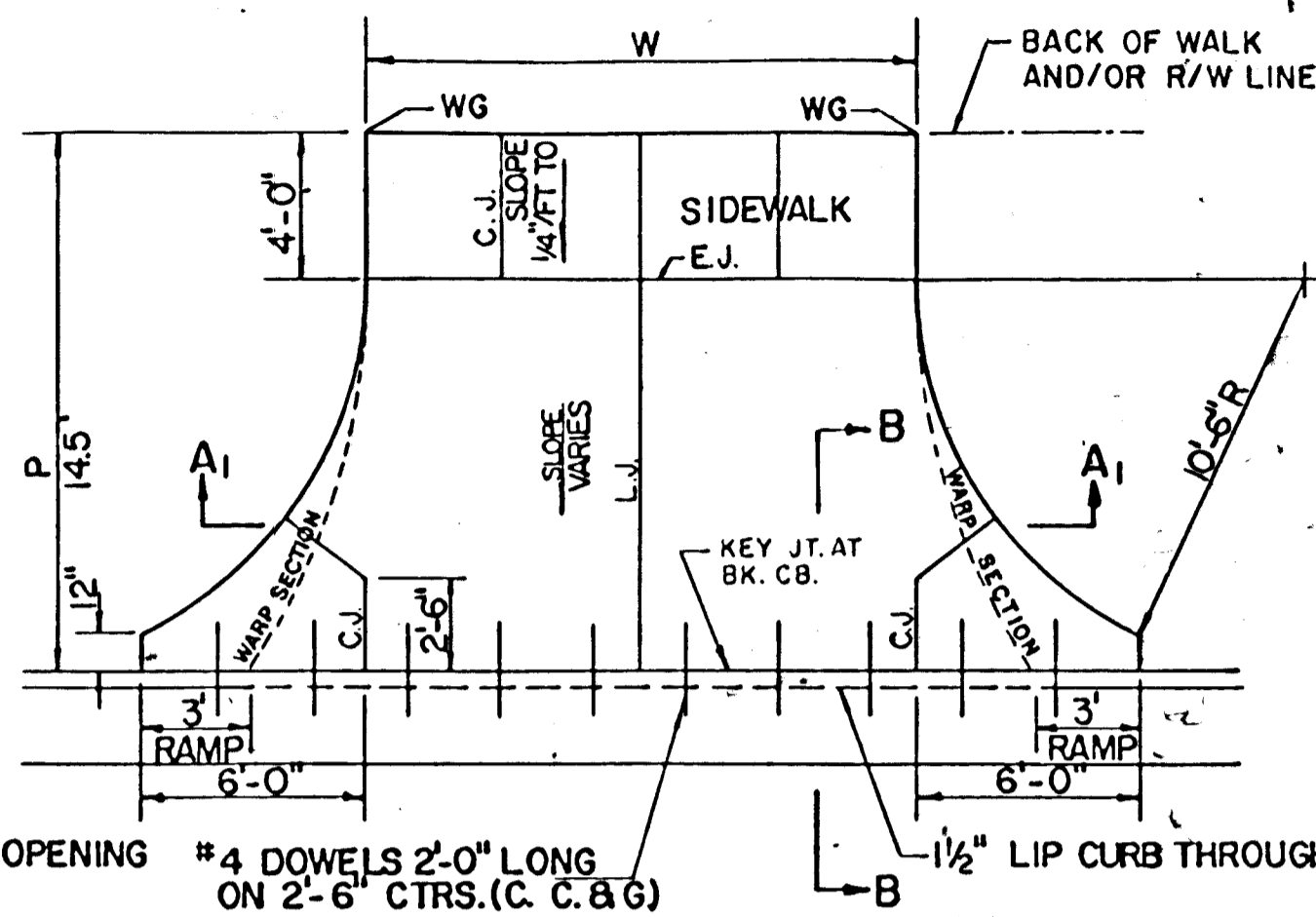
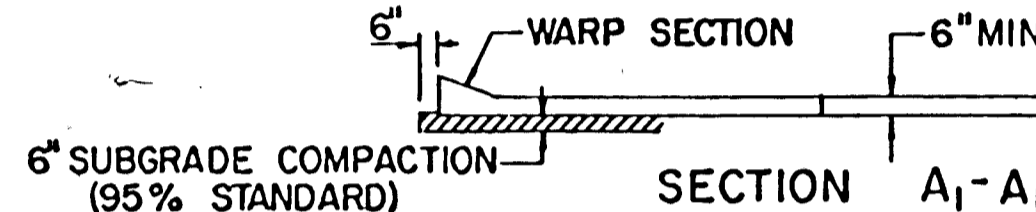
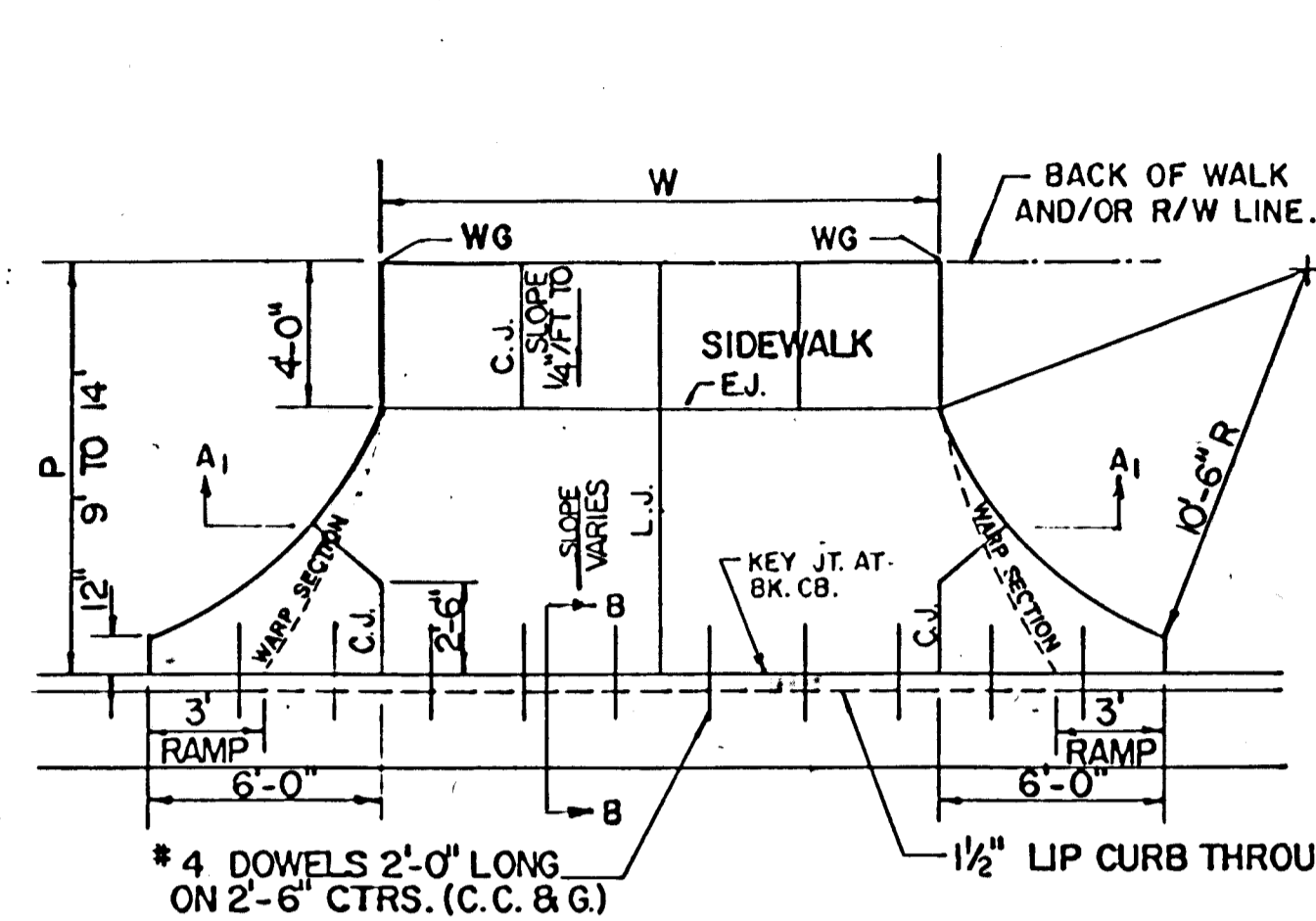
ALT. LONGITUDINAL CONSTRUCTION JOINT



CONTRACTION JOINT (C.J.) OR LONGITUDINAL JOINT (L.J.)
NO SAWN JOINTS WILL BE ALLOWED.

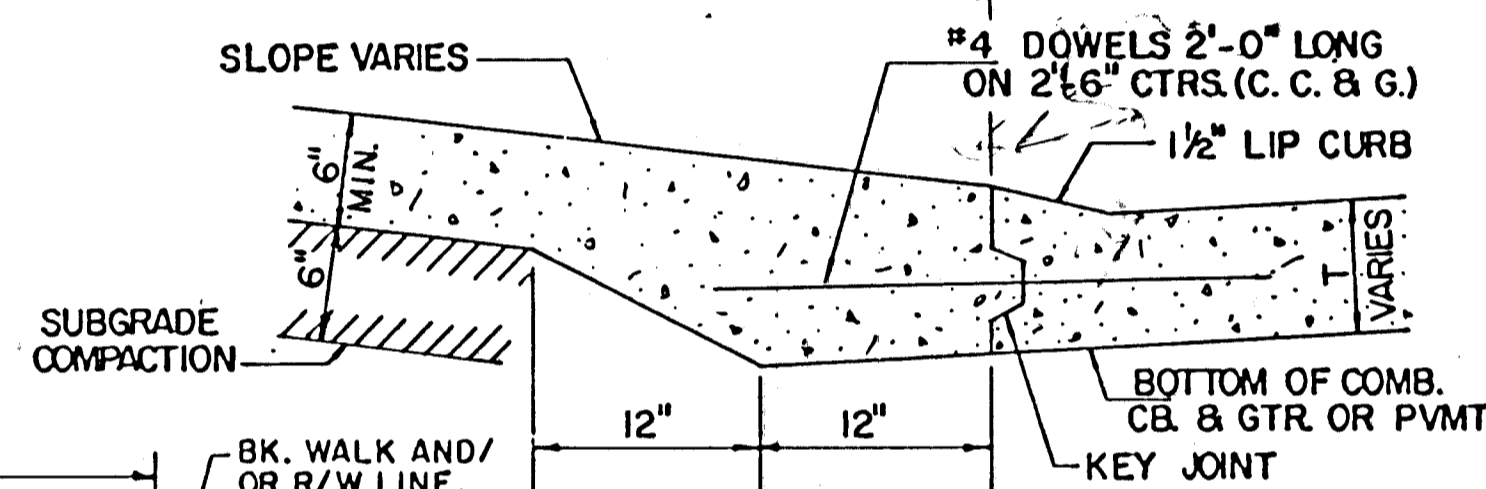


EXPANSION JOINT (E.J.)



PARKING WIDTH "P"		9'	10'	11'	12'	13'	14.5'	20'	25'	30'	35'	40'	45'	50'
ABSOLUTE	MAX. DIST. OF PT. "WG" ABOVE OR BELOW TOP OF FULL CURB	0.27	0.27	0.32	0.37	0.52	0.80	1.35	1.85	2.35	2.85	3.35	3.85	4.35
OPTIMUM	MAX. DIST. OF PT. "WG" ABOVE OR BELOW TOP OF FULL CURB	0.27	0.27	0.32	0.37	0.52	0.82	0.98	1.22	1.48	1.74	2.00	2.28	2.52
OPTIMUM	MIN. DIST. OF PT. "WG" ABOVE OR BELOW TOP OF FULL CURB	0.19	0.21	0.23	0.25	0.27	0.30	0.42	0.52	0.62	0.72	0.82	0.92	1.02
ABSOLUTE	MIN. DIST. OF PT. "WG" ABOVE OR BELOW TOP OF FULL CURB	-1.9	-1.6	-1.3	-1.0	-0.8	0.00	0.00	0.15	0.25	0.35	0.45	0.55	0.65

RADIUS RAMP DRIVES (P = 9.0' & GREATER)



BACK OF CURB DETAIL SECTION B-B (no scale)

PARKING WIDTH "P"	4'	4.5'	5'	5.5'	6'	6.5'
DIST OF PT. "1" ABOVE TOP OF FULL CB.	0.08	0.09	0.10	0.12	0.13	0.14
DIST. OF PT. "2" BELOW TOP OF FULL CB.	-.34	-.32	-.30	-.28	-.26	-.22

FULL RAMP DRIVE (P = 4.0' TO 6.5')

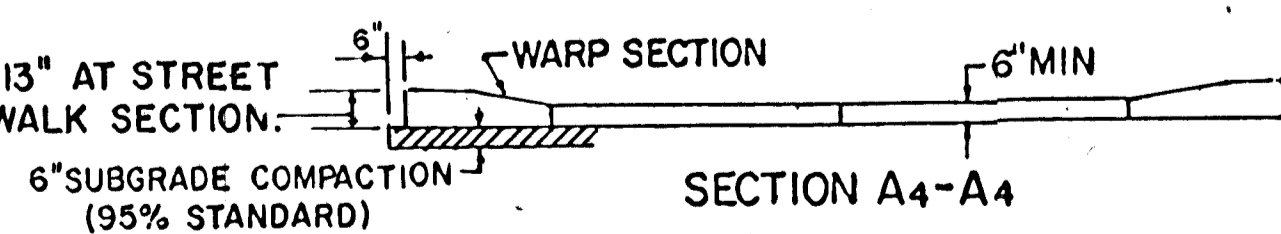
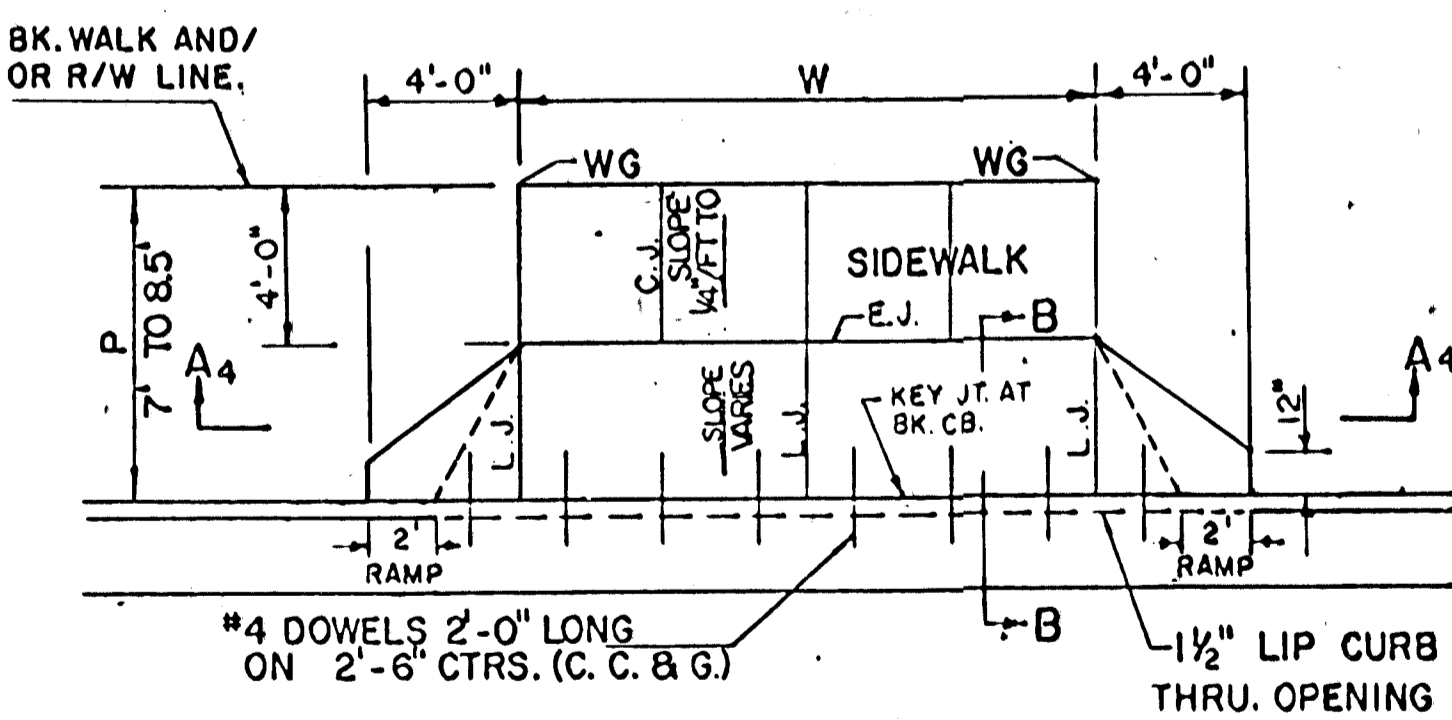
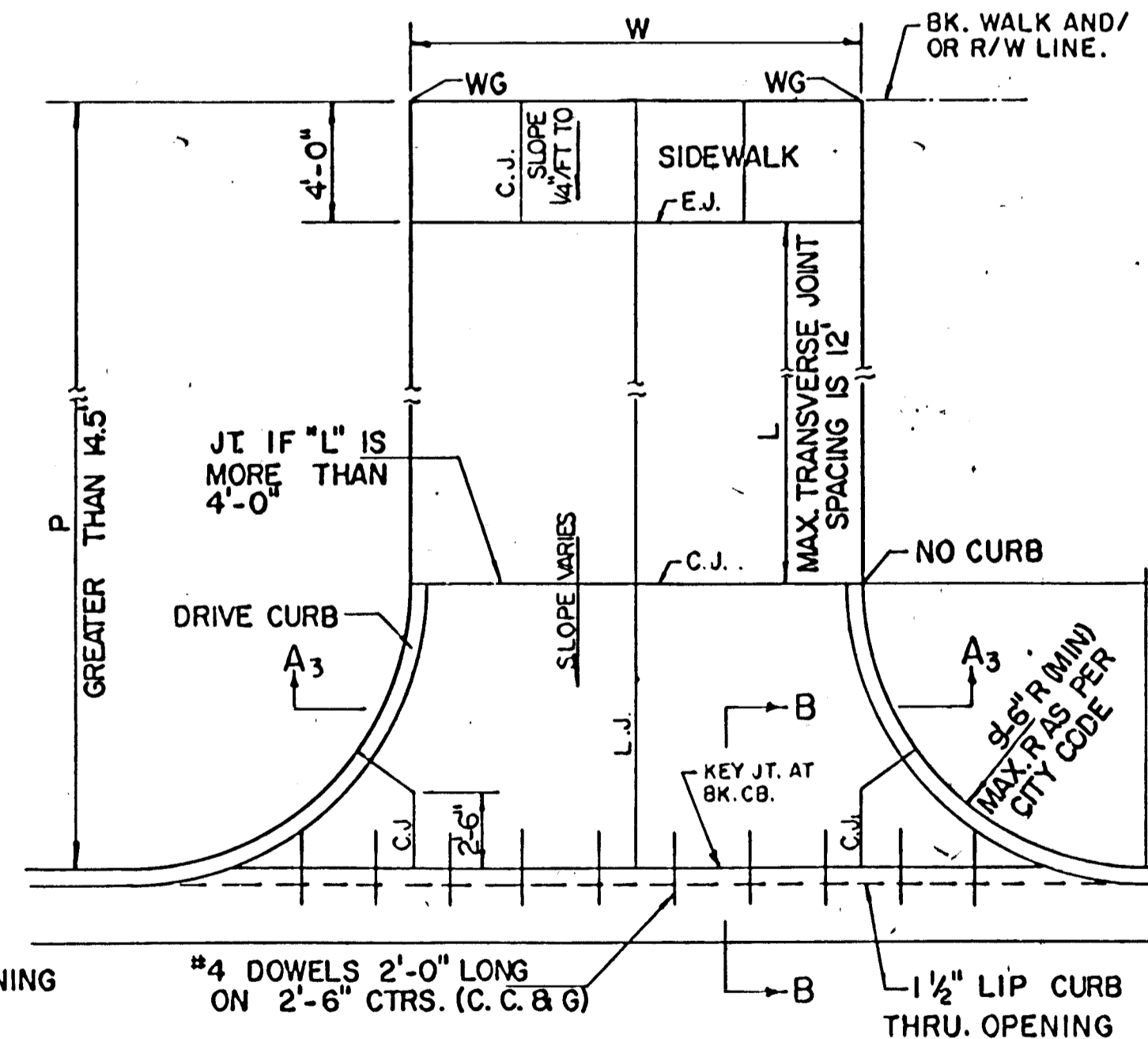
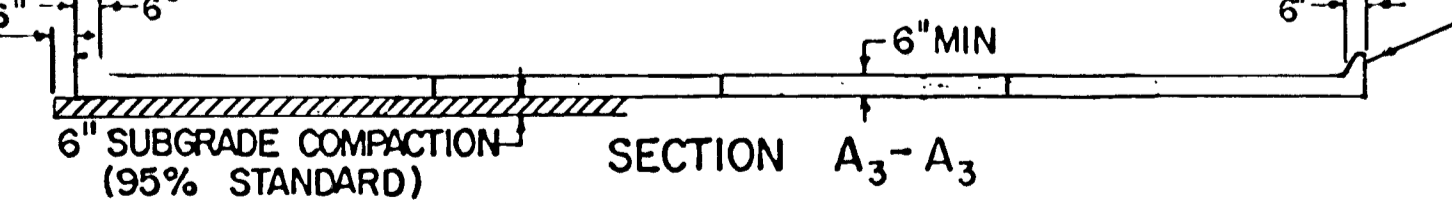
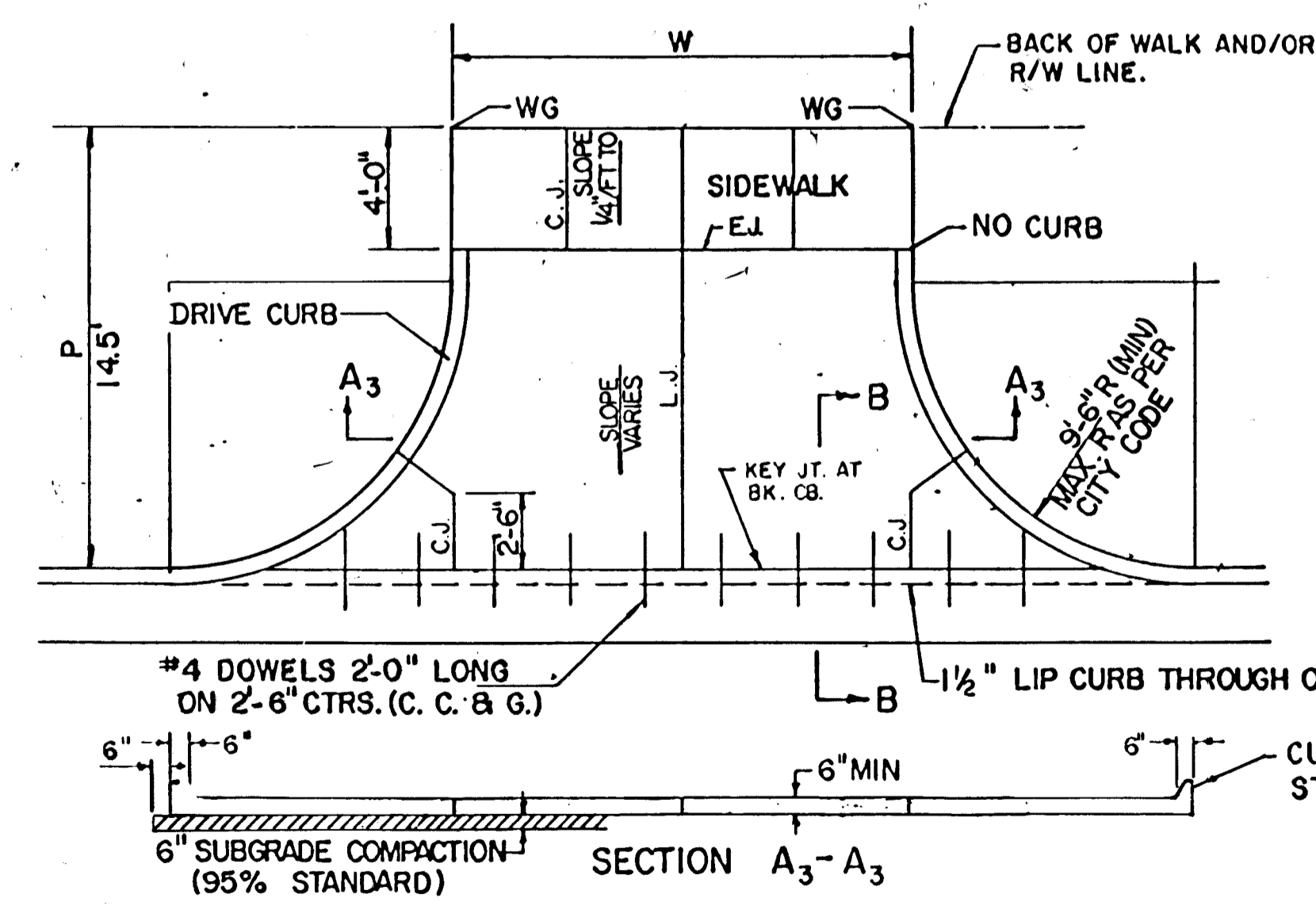
GENERAL NOTES

- DRIVEWAY CONSTRUCTION DETAILED ON THIS SHEET IS FOR USE WITH FULL HEIGHT STREET CURBS AND IN AREAS WITHOUT FULL WALK CONSTRUCTION IN THE PARKING. SEE OTHER DETAIL SHEETS FOR DRIVEWAY CONSTRUCTION WITH ROLL CURB AND/OR FULL WALK.
- ONE LONGITUDINAL JOINT SHALL BE CONSTRUCTED ALONG THE CENTERLINE OF DRIVES HAVING A "P" DIMENSION OF 24' OR LESS. TWO LONGITUDINAL JOINTS SHALL BE CONSTRUCTED WITH EQUAL SPACINGS NOT TO EXCEED 10' FOR DRIVES WITH A "P" DIMENSION GREATER THAN 24'.
- DRIVEWAY WIDTH DENOTED AS "W" ON THE DETAIL DRAWINGS SHALL BE A MINIMUM OF 10' AND A MAXIMUM OF 30'. THE MAXIMUM OPENING FOR RADIUS TYPE DRIVES WITH CURBS THROUGH THE RADIUS SHALL NOT EXCEED 52' AT THE STREET CURB LINE.
- CONTRACTION JOINT SPACING IN THE DRIVEWAY WALK SECTION SHALL BE A MINIMUM OF 3' AND A MAXIMUM OF 6' AND ARE TO BE EQUALLY SPACED WITHIN THIS RANGE. WALK SECTION SHALL BE CONSTRUCTED TO THE SAME THICKNESS AS THE DRIVEWAY.
- DOWEL BARS SHALL BE OMITTED FROM THE KEYED CONSTRUCTION JOINT ALONG THE BACK OF THE STREET CURB LINE WHEN DRIVEWAYS ARE CONSTRUCTED IN CONJUNCTION WITH NEW CONCRETE PAVEMENT CONSTRUCTION.
- ADDITIONAL THICKNESS OF DRIVE AS INDICATED IN THE DRAWINGS WILL NOT BE PAID FOR DIRECTLY AND THIS COST SHALL BE INCLUDED IN THE UNIT PRICE BID FOR THE DRIVEWAY CONSTRUCTION.
- ONE HALF INCH EXPANSION JOINTS SHALL BE INSTALLED WHEREVER DRIVE CONSTRUCTION ABUTS SIDEWALK. ONE HALF INCH EXPANSION JOINTS SHALL ALSO BE INSTALLED ALONG THE PROPERTY LINE AND/OR BACK OF WALK LINE WHEN DRIVE CONSTRUCTION ALONG THIS LINE ABUTS CONCRETE PARKING LOTS OR CONCRETE DRIVE EXTENSION.
- ALL DRIVEWAYS SHALL BE A MINIMUM OF 6" IN THICKNESS AND SHALL BE WITHOUT REINFORCEMENT. DRIVEWAYS MAY BE CONSTRUCTED THICKER THAN 6" AND THEY MAY BE REINFORCED WITH 6"x12" #4-WA WELDED WIRE FABRIC WHEN PROPERLY AUTHORIZED BY THE PROPERTY OWNER WITH THE ENGINEER'S CONCURRENCE.
- OPTIMUM DRIVEWAY ELEVATIONS SHOWN IN THE TABLES ARE TO BE USED WHEREVER POSSIBLE. ABSOLUTE MAXIMUM AND MINIMUM ELEVATIONS ARE TO BE USED ONLY WHEN THESE VALUES WILL PERMIT NEW CONSTRUCTION TO MATCH EXISTING DRIVES OR PARKING LOTS. VALUES SHOWN IN THE TABLES ARE BASED ON A FULL CURB HEIGHT ELEVATION OF 0.55' ABOVE THE CUTTER FLOW LINE AND MUST BE ADJUSTED ACCORDINGLY FOR OTHER CURB HEIGHTS. VALUES SHOWN IN THE TABLES WITH MINUS SIGNS INDICATE ELEVATIONS BELOW TOP OF FULL HEIGHT CURB.

REVISED APRIL 1994 (JKB)
SCALE: 1" = 5'

STANDARD DRIVE ENTRANCES
FULL HEIGHT CURB
CITY OF WICHITA, KANSAS

PROJECT NUMBER
412 76 245 818.53 000 000 001



PARKING WIDTH "P"		14.5'	20'	25'	30'	35'	40'	45'	50'
ABSOLUTE	MAX. DIST. OF PT. "WG" ABOVE TOP OF FULL CB.	0.72	1.27	1.77	2.27	2.77	3.27	3.77	4.27
OPTIMUM	MAX. DIST. OF PT. "WG" ABOVE TOP OF FULL CB.	0.70	1.04	1.30	1.56	1.82	2.08	2.34	2.60
OPTIMUM	MIN. DIST. OF PT. "WG" ABOVE TOP OF FULL CB.	0.30	0.42	0.52	0.62	0.72	0.82	0.92	1.02
ABSOLUTE	MIN. DIST. OF PT. "WG" ABOVE TOP OF FULL CB.	0.00	0.00	0.15	0.25	0.35	0.45	0.55	0.65

FULL RADIUS DRIVES (P = 14.5' & GREATER)

PARKING WIDTH "P"		7'	7.5'	8'	8.5'
ABSOLUTE	MAX. DIST. OF PT. "WG" ABOVE TOP OF FULL CB.	-0.08	0.02	0.18	0.22
OPTIMUM	MAX. DIST. OF PT. "WG" ABOVE TOP OF FULL CB.	-0.08	0.02	0.18	0.22
OPTIMUM	MIN. DIST. OF PT. "WG" BELOW TOP OF FULL CB.	-.15	-.16	-.17	-.17
ABSOLUTE	MAX. DIST. OF PT. "WG" BELOW TOP OF FULL CB.	-.25	-.20	-.20	-.20

FULL RAMP DRIVE (P = 7.0' TO 8.5')