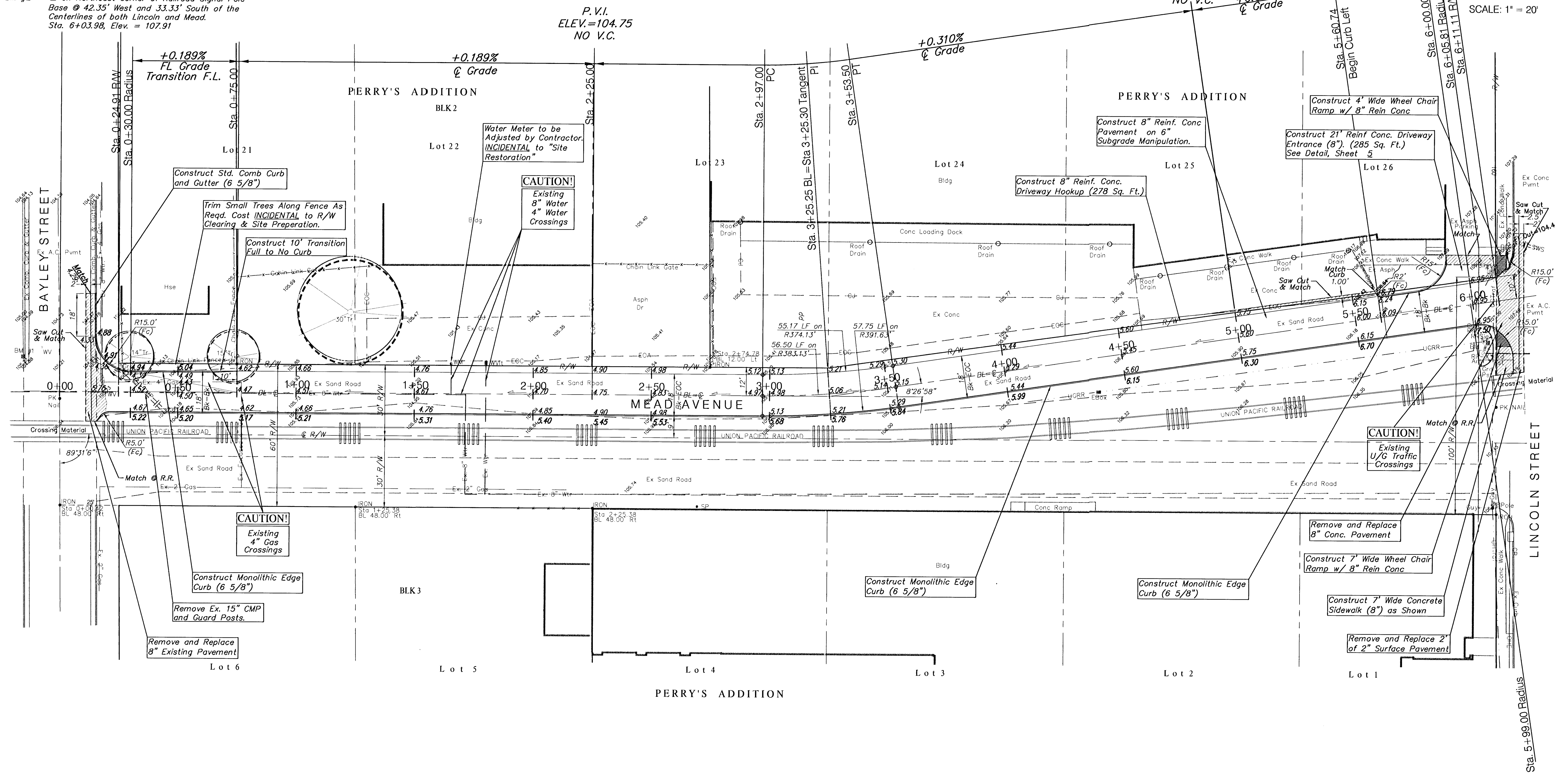
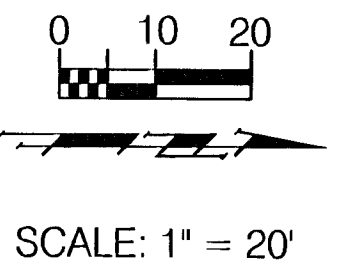


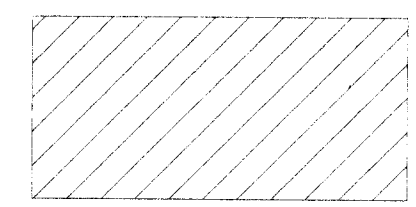
BENCHMARKS:

BM #1 - Top of curb @ 32.60' West and 15.43' South of the Centerlines of both Bayley and Mead. Sta. 0+15.53, Elev. = 105.97

BM #2 - on Northeast corner of Railroad Signal Pole Base @ 42.35' West and 33.33' South of the Centerlines of both Lincoln and Mead. Sta. 6+03.98, Elev. = 107.91



Note:
Pavement, Sidewalks, and Etc. To Be Removed Are Indicated By:



| | | | | | |
|-------------------------------|--------------|---------------------|----------------|----------------------------------|---------------------------|
| PROJECT NUMBER 472 - 83317 | | SHEET NAME PAV01 | | ENGINEERING DIRECTORY F:\MEAD | |
| DESIGN JFB | DRAWN TCA | APPROVED JFB | DATE SEPT01 | SCALE NOTED | BAUGHMAN NO 01 04 E980 |

MEAD IMPROVEMENT DISTRICT
PAVING PLAN
MEAD AVE FROM BAYLEY STREET TO LINCOLN STREET

BAUGHMAN COMPANY, P.A.
ENGINEERING, SURVEYING, & PLANNING
316-262-7271 • 315 ELLIS • WICHITA, KANSAS 67211

SHEET
OF
14

F:\Eng\MEAD\PAV01.dwg Thu Sep 27 12:07:00 2001